

Home report

1490 Laperrière Avenue, Carlington, Ottawa, Ontario, Canada,
K1Z 7S9



Total Area: 1074 sq. ft

Floor 1: 49 sq. ft, Floor 2: 1025 sq. ft

Excluded: Basement 879 sq. ft, Embedded window 15 sq. ft, Walls: 149 sq. ft

Property summary

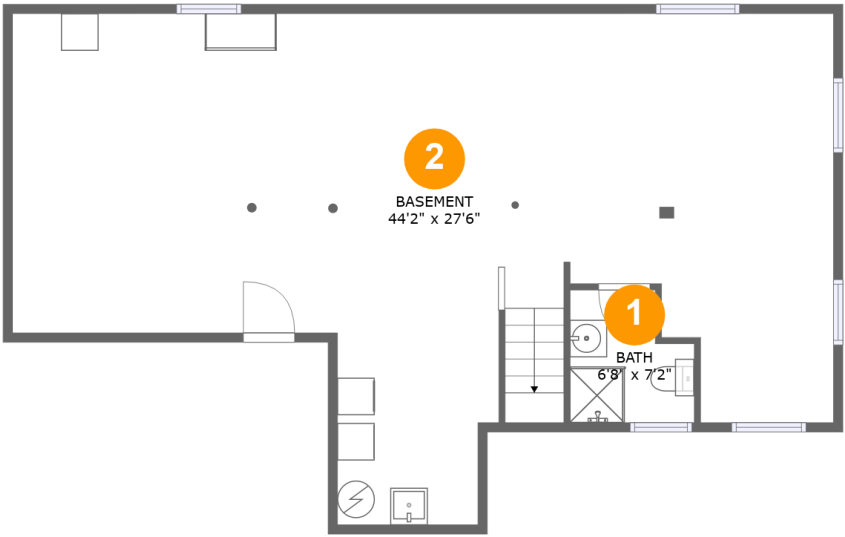
 **2** Floors

 **3** Bedrooms

 **2** Bathrooms

Home report

1490 Laperrière Avenue, Carlington, Ottawa, Ontario, Canada,
K1Z 7S9



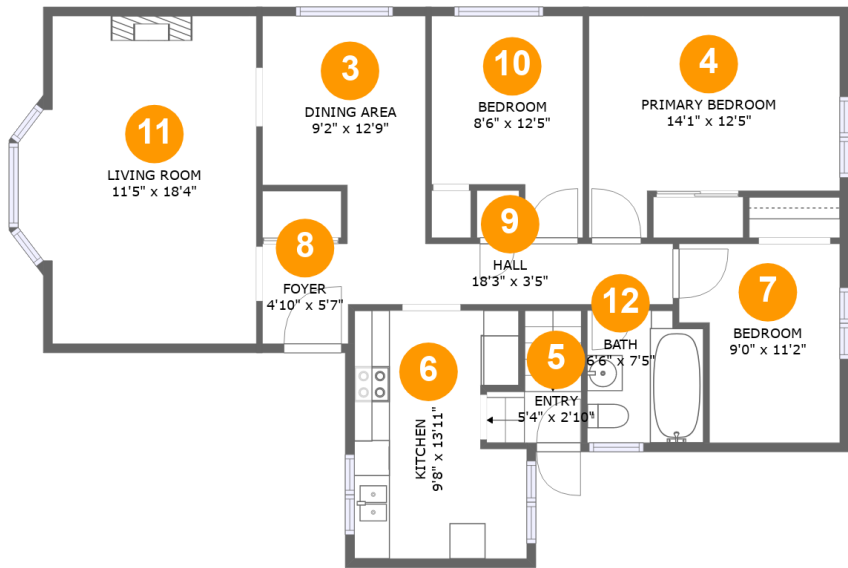
Room dimensions

Floor 1 Total:49sqft Excluded: 879sqft

#		Max Dimensions	sqft	Included
1	Bath	6'8" x 7'2"	42 sq. ft	Yes
2	Basement	44'2" x 27'6"	877 sq. ft	No

Home report

1490 Laperrière Avenue, Carlington, Ottawa, Ontario, Canada,
K1Z 7S9



Room dimensions

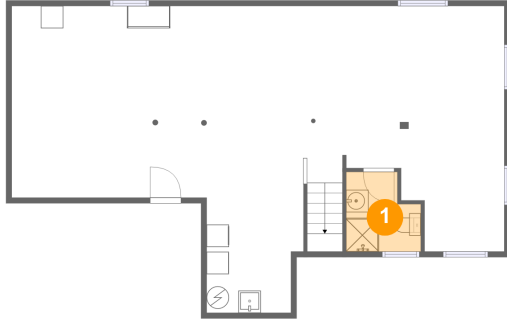
Floor 2 Total:1025sqft Excluded: 15sqft

#		Max Dimensions	sqft	Included
3	Dining Area	9'2" x 12'9"	101 sq. ft	Yes
4	Primary Bedroom	14'1" x 12'5"	147 sq. ft	Yes
5	Entry	5'4" x 2'10"	30 sq. ft	Yes
6	Kitchen	9'8" x 13'11"	124 sq. ft	Yes
7	Bedroom	9'0" x 11'2"	89 sq. ft	Yes
8	Foyer	4'10" x 5'7"	27 sq. ft	Yes
9	Hall	18'3" x 3'5"	62 sq. ft	Yes
10	Bedroom	8'6" x 12'5"	90 sq. ft	Yes
11	Living Room	11'5" x 18'4"	210 sq. ft	Yes
12	Bath	6'6" x 7'5"	47 sq. ft	Yes

Home report

1490 Laperrière Avenue, Carlington, Ottawa, Ontario, Canada,
K1Z 7S9

1 Floor 1 - Bath



Max Dimensions: 6'8" x 7'2"
Calculated Area: 42 sq. ft
Included: No

Heated: Yes
Finished: Yes
Enclosed: Yes
Contiguous: No
Permitted: Yes
Wet space: Yes
Addition: No
Conversion: No

2 Floor 1 - Basement



Max Dimensions: 44'2" x 27'6"
Calculated Area: 877 sq. ft
Included: No

Heated: Yes
Finished: No
Enclosed: Yes
Contiguous: Yes
Permitted: Yes
Wet space: No
Addition: No
Conversion: No

1490 Laperrière Avenue, Carlington, Ottawa, Ontario, Canada,
K1Z 7S9

3 Floor 2 - Dining Area



Max Dimensions: 9'2" x 12'9"
Calculated Area: 101 sq. ft
Included: Yes

Heated: Yes
Finished: Yes
Enclosed: Yes
Contiguous: Yes
Permitted: Yes
Wet space: No
Addition: No
Conversion: No

4 Floor 2 - Primary Bedroom



Max Dimensions: 14'1" x 12'5"
Calculated Area: 147 sq. ft
Included: Yes

Heated: Yes
Finished: Yes
Enclosed: Yes
Contiguous: Yes
Permitted: Yes
Wet space: No
Addition: No
Conversion: No

5 Floor 2 - Entry



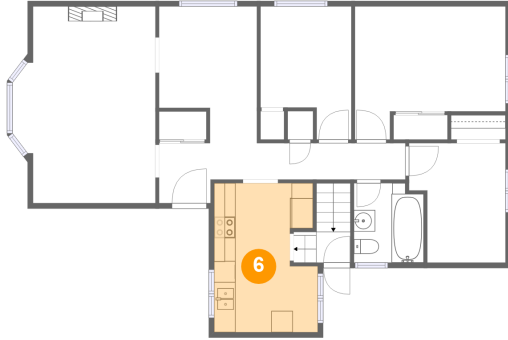
Max Dimensions: 5'4" x 2'10"
Calculated Area: 30 sq. ft
Included: Yes

Heated: Yes
Finished: Yes
Enclosed: Yes
Contiguous: Yes
Permitted: Yes
Wet space: No
Addition: No
Conversion: No

Home report

1490 Laperrière Avenue, Carlington, Ottawa, Ontario, Canada,
K1Z 7S9

6 Floor 2 - Kitchen



Max Dimensions: 9'8" x 13'11"
Calculated Area: 124 sq. ft
Included: Yes

Heated: Yes
Finished: Yes
Enclosed: Yes
Contiguous: Yes
Permitted: Yes
Wet space: No
Addition: No
Conversion: No

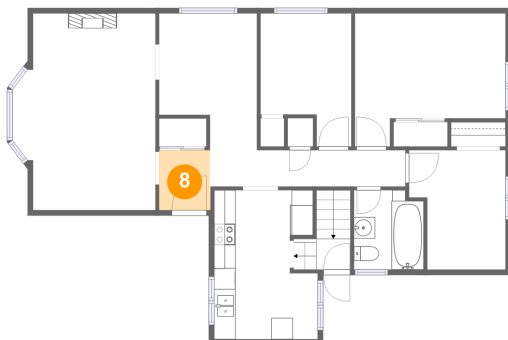
7 Floor 2 - Bedroom



Max Dimensions: 9'0" x 11'2"
Calculated Area: 89 sq. ft
Included: Yes

Heated: Yes
Finished: Yes
Enclosed: Yes
Contiguous: Yes
Permitted: Yes
Wet space: No
Addition: No
Conversion: No

8 Floor 2 - Foyer

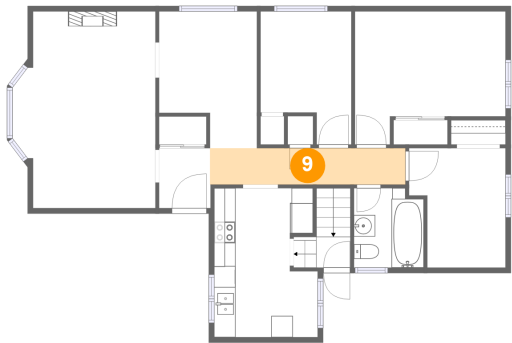


Max Dimensions: 4'10" x 5'7"
Calculated Area: 27 sq. ft
Included: Yes

Heated: Yes
Finished: Yes
Enclosed: Yes
Contiguous: Yes
Permitted: Yes
Wet space: No
Addition: No
Conversion: No

1490 Laperrière Avenue, Carlington, Ottawa, Ontario, Canada,
K1Z 7S9

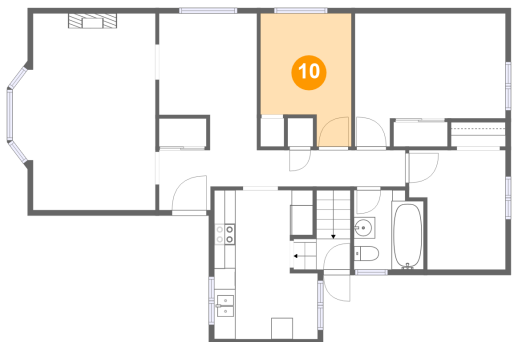
9 Floor 2 - Hall



Max Dimensions: 18'3" x 3'5"
Calculated Area: 62 sq. ft
Included: Yes

Heated: Yes
Finished: Yes
Enclosed: Yes
Contiguous: Yes
Permitted: Yes
Wet space: No
Addition: No
Conversion: No

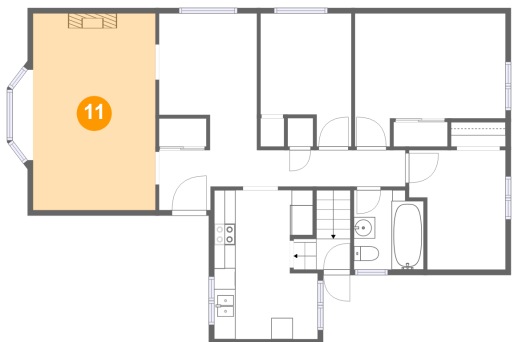
10 Floor 2 - Bedroom



Max Dimensions: 8'6" x 12'5"
Calculated Area: 90 sq. ft
Included: Yes

Heated: Yes
Finished: Yes
Enclosed: Yes
Contiguous: Yes
Permitted: Yes
Wet space: No
Addition: No
Conversion: No

11 Floor 2 - Living Room

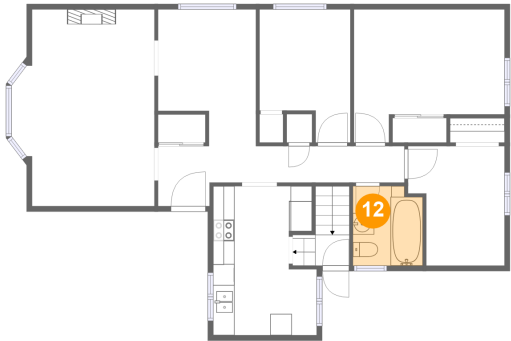


Max Dimensions: 11'5" x 18'4"
Calculated Area: 210 sq. ft
Included: Yes

Heated: Yes
Finished: Yes
Enclosed: Yes
Contiguous: Yes
Permitted: Yes
Wet space: No
Addition: No
Conversion: No

1490 Laperrière Avenue, Carlington, Ottawa, Ontario, Canada,
K1Z 7S9

12 Floor 2 - Bath



Max Dimensions: 6'6" x 7'5"
Calculated Area: 47 sq. ft
Included: Yes

Heated: Yes
Finished: Yes
Enclosed: Yes
Contiguous: Yes
Permitted: Yes
Wet space: Yes
Addition: No
Conversion: No