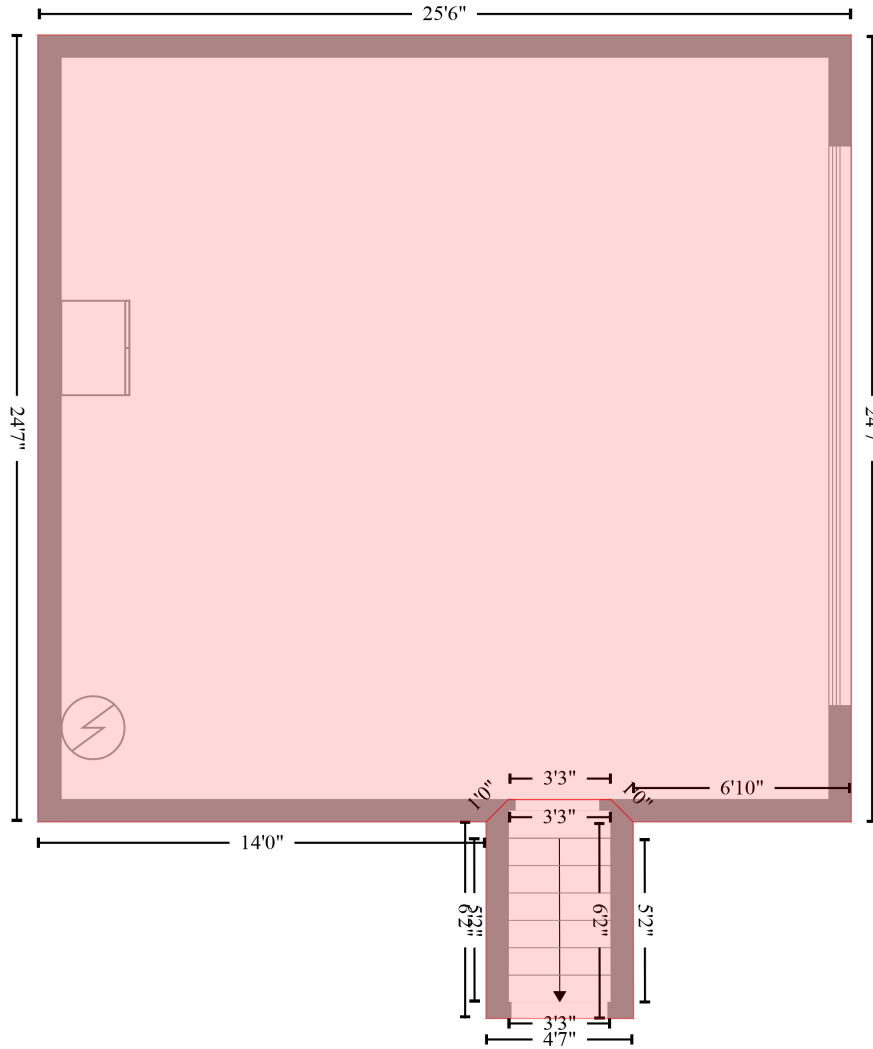


1800 Blevins Ridge Drive Southeast, Huntsville, Madison County, Alabama, United States, 35802

Gross Living Area: 3112 sq. ft

GARAGE (2)  
[AREA: 624]

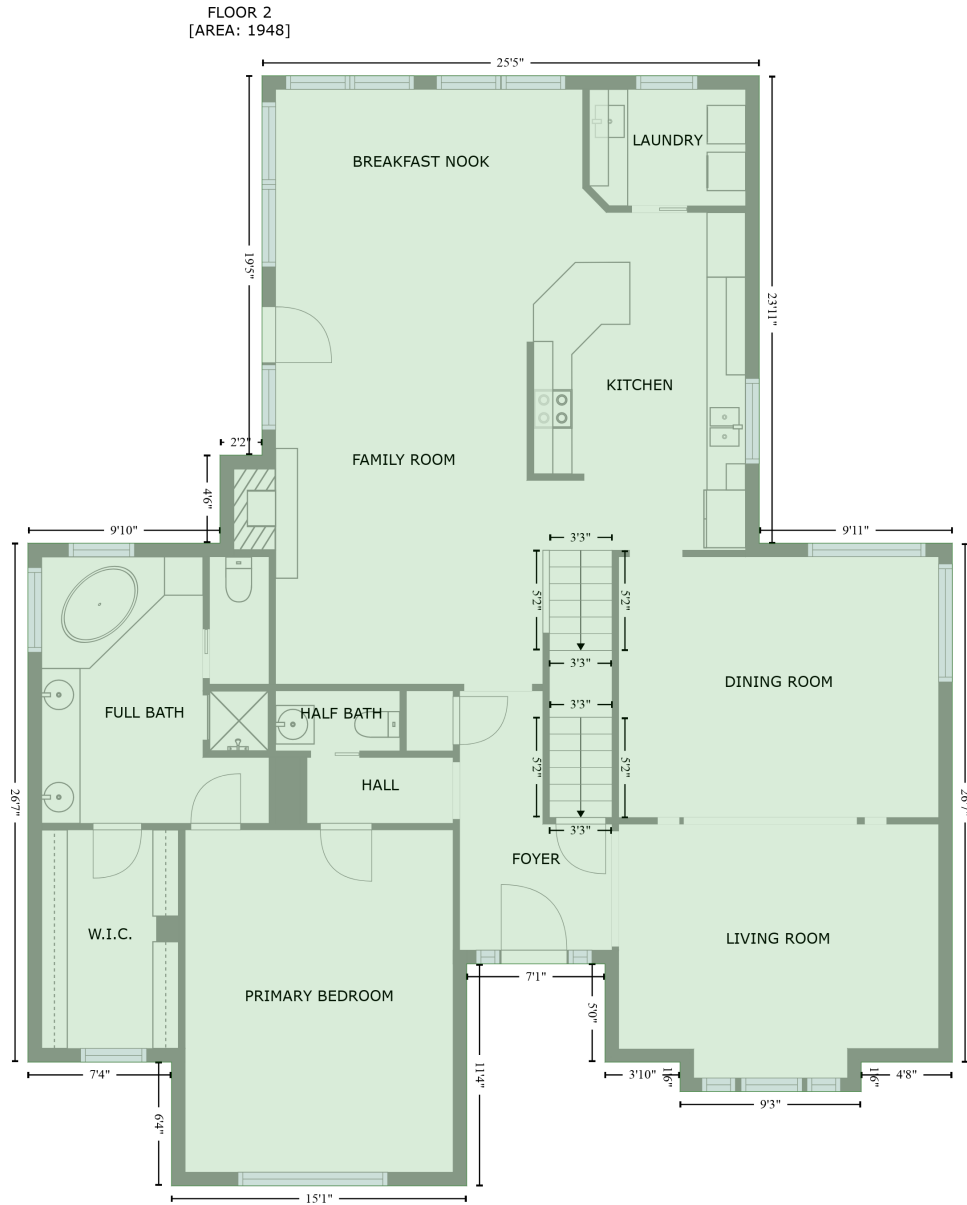


UNDEFINED (1)  
[AREA: 31]

Space	Area (sq. ft)	Calculation <small>Coordinate Polygon Area Algorithm using inches</small>
UNDEFINED (Non-living area)	31	$-((415.3 + 423.7) * (290.5 - 298.8) + (423.7 + 423.8) * (298.8 - 372.6) + (423.8 + 368.4) * (372.6 - 372.6) + (368.4 + 368.4) * (372.6 - 298.8) + (368.4 + 376.8) * (298.8 - 290.5) + (376.8 + 415.3) * (290.5 - 290.5)) * 0.5 * 0.00694$
GARAGE (Non-living area)	624	$-((505.6 + 505.6) * (3.4 - 298.8) + (505.6 + 423.7) * (298.8 - 298.8) + (423.7 + 415.3) * (298.8 - 290.5) + (415.3 + 376.8) * (290.5 - 290.5) + (376.8 + 368.4) * (290.5 - 298.8) + (368.4 + 199.9) * (298.8 - 298.8) + (199.9 + 199.9) * (298.8 - 3.4) + (199.9 + 505.6) * (3.4 - 3.4)) * 0.5 * 0.00694$

# 1800 Blevins Ridge Drive Southeast, Huntsville, Madison County, Alabama, United States, 35802

Gross Living Area: 3112 sq. ft



Space	Area (sq. ft)	Calculation <small>Coordinate Polygon Area Algorithm using inches</small>
FLOOR 2 (Living area)	1948	$  \begin{aligned}  & -((505.6 + 505.6) * (3.4 - 290.5) + (505.6 + 624.1) * (290.5 - 290.5) + (624.1 + 624.1) * (290.5 - \\  & 609.1) + (624.1 + 568.2) * (609.1 - 609.1) + (568.2 + 568.2) * (609.1 - 627.3) + (568.2 + 457) * \\  & (627.3 - 627.3) + (457 + 457) * (627.3 - 609.1) + (457 + 410.9) * (609.1 - 609.1) + (410.9 + 410.9) \\  & * (609.1 - 548.8) + (410.9 + 326) * (548.8 - 548.8) + (326 + 326) * (548.8 - 685.1) + (326 + 144.8) \\  & * (685.1 - 685.1) + (144.8 + 144.8) * (685.1 - 609.1) + (144.8 + 56.6) * (609.1 - 609.1) + (56.6 + \\  & 56.6) * (609.1 - 290.5) + (56.6 + 174.5) * (290.5 - 290.5) + (174.5 + 174.5) * (290.5 - 236.4) + \\  & (174.5 + 200.3) * (236.4 - 236.4) + (200.3 + 200.3) * (236.4 - 3.4) + (200.3 + 505.6) * (3.4 - 3.4) *  \end{aligned}  $

# 1800 Blevins Ridge Drive Southeast, Huntsville, Madison County, Alabama, United States, 35802

Gross Living Area: 3112 sq. ft

Space	Area (sq. ft)	Calculation <small>Coordinate Polygon Area Algorithm using inches</small>
		0.5 * 0.00694

# 1800 Blevins Ridge Drive Southeast, Huntsville, Madison County, Alabama, United States, 35802

Gross Living Area: 3112 sq. ft



Space	Area (sq. ft)	Calculation <small>Coordinate Polygon Area Algorithm using inches</small>
FLOOR 3 (Living area)	1164	$  \begin{aligned}  & -((463.1 + 463.1) * (3.4 - 305.6) + (463.1 + 423.7) * (305.6 - 305.6) + (423.7 + 423.7) * (305.6 - 354.2) + (423.7 + 624.1) * (354.2 - 354.2) + (624.1 + 624.1) * (354.2 - 548.9) + (624.1 + 415.3) * \\  & (548.9 - 548.9) + (415.3 + 415.3) * (548.9 - 508.7) + (415.3 + 334.3) * (508.7 - 508.7) + (334.3 + 334.3) * (508.7 - 548.9) + (334.3 + 229.5) * (548.9 - 548.9) + (229.5 + 229.5) * (548.9 - 513) + \\  & (229.5 + 56.6) * (513 - 513) + (56.6 + 56.6) * (513 - 354.2) + (56.6 + 255.4) * (354.2 - 354.2) + \\  & (255.4 + 263.8) * (354.2 - 358.6) + (263.8 + 331.4) * (358.6 - 358.6) + (331.4 + 331.4) * (358.6 - 301.2) + (331.4 + 255.4) * (301.2 - 301.2) + (255.4 + 255.4) * (301.2 - 3.4) + (255.4 + 463.1) *  \end{aligned}  $

# 1800 Blevins Ridge Drive Southeast, Huntsville, Madison County, Alabama, United States, 35802

Gross Living Area: 3112 sq. ft

Space	Area (sq. ft)	Calculation <small>Coordinate Polygon Area Algorithm using inches</small>
		$(3.4 - 3.4) * 0.5 * 0.00694$
LOW CEILING (Non-living area)	23	$-((415.3 + 415.3) * (508.7 - 548.9) + (415.3 + 334.3) * (548.9 - 548.9) + (334.3 + 334.3) * (548.9 - 508.7) + (334.3 + 415.3) * (508.7 - 508.7)) * 0.5 * 0.00694$
LOW CEILING (Non-living area)	21	$-((229.5 + 229.5) * (513 - 548.9) + (229.5 + 149.6) * (548.9 - 548.9) + (149.6 + 149.6) * (548.9 - 540.6) + (149.6 + 145.6) * (540.6 - 540.6) + (145.6 + 145.6) * (540.6 - 513) + (145.6 + 229.5) * (513 - 513)) * 0.5 * 0.00694$
LOW CEILING (Non-living area)	22	$-((145.6 + 145.6) * (513 - 540.6) + (145.6 + 149.6) * (540.6 - 540.6) + (149.6 + 149.6) * (540.6 - 548.9) + (149.6 + 56.6) * (548.9 - 548.9) + (56.6 + 56.6) * (548.9 - 513) + (56.6 + 145.6) * (513 - 513)) * 0.5 * 0.00694$
LOW CEILING (Non-living area)	30	$-((331.4 + 331.4) * (301.2 - 358.6) + (331.4 + 263.8) * (358.6 - 358.6) + (263.8 + 255.4) * (358.6 - 354.2) + (255.4 + 255.4) * (354.2 - 301.2) + (255.4 + 331.4) * (301.2 - 301.2)) * 0.5 * 0.00694$