


# 196 River Walk Trail, New Market, Madison County, Alabama, United States, 35761



## Property summary


 **1** Garages

 **4** Bedrooms

 **3** Bathrooms

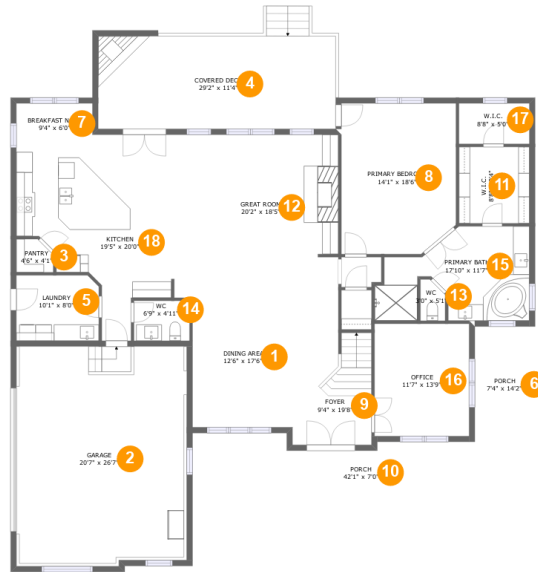
 **1** Half baths

 **2** Floors

 **3,579** Gross living area sqft

 **5,410** Total sqft

# 196 River Walk Trail, New Market, Madison County, Alabama, United States, 35761



## Room dimensions

Floor 1

Total sqft: 3609

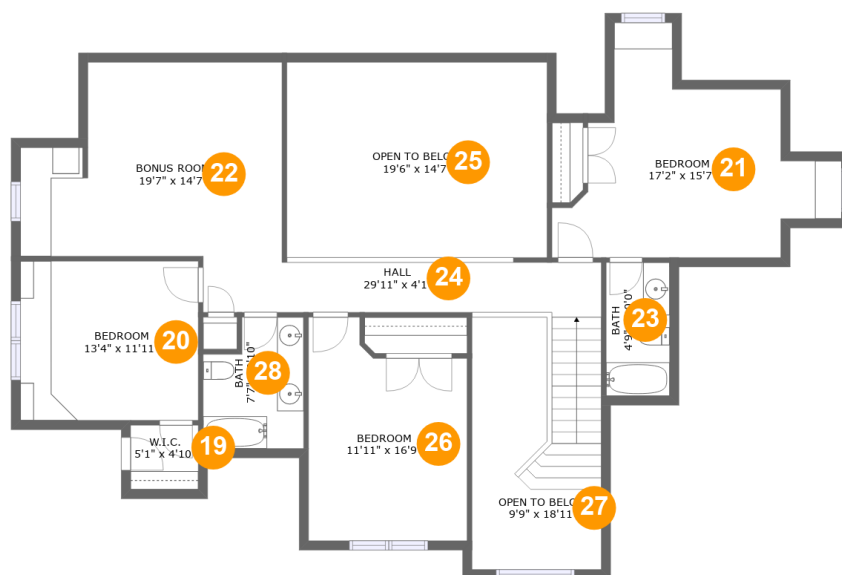
Living area: 2252

#		Dimensions	sqft	Counted as living area
1	Dining Area	12'6" x 17'6"	224 sq. ft	Yes
2	Garage	20'7" x 26'7"	558 sq. ft	No
3	Pantry	4'6" x 4'1"	17 sq. ft	Yes
4	Covered Deck	29'2" x 11'4"	332 sq. ft	No
5	Laundry	10'1" x 8'0"	80 sq. ft	Yes
6	Porch	7'4" x 14'2"	105 sq. ft	No
7	Breakfast Nook	9'4" x 6'0"	56 sq. ft	Yes
8	Primary Bedroom	14'1" x 18'6"	252 sq. ft	Yes
9	Foyer	9'4" x 19'8"	160 sq. ft	Yes
10	Porch	42'1" x 7'0"	316 sq. ft	No
11	W.I.C.	8'8" x 9'4"	81 sq. ft	Yes

# 196 River Walk Trail, New Market, Madison County, Alabama, United States, 35761

#		Dimensions	sqft	Counted as living area
12	Great Room	20'2" x 18'5"	369 sq. ft	Yes
13	WC	3'0" x 5'1"	14 sq. ft	Yes
14	WC	6'9" x 4'11"	33 sq. ft	Yes
15	Primary Bath	17'10" x 11'7"	167 sq. ft	Yes
16	Office	11'7" x 13'9"	160 sq. ft	Yes
17	W.I.C.	8'8" x 5'0"	43 sq. ft	Yes
18	Kitchen	19'5" x 20'0"	335 sq. ft	Yes

# 196 River Walk Trail, New Market, Madison County, Alabama, United States, 35761



## Room dimensions

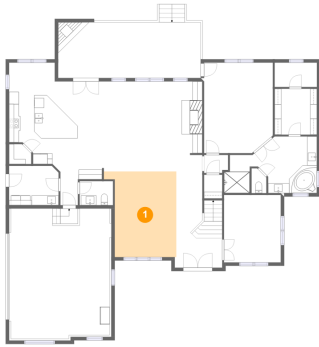
Floor 2

Total sqft: 1801 Living area: 1327

#		Dimensions	sqft	Counted as living area
19	W.I.C.	5'1" x 4'10"	25 sq. ft	Yes
20	Bedroom	13'4" x 11'11"	159 sq. ft	Yes
21	Bedroom	17'2" x 15'7"	230 sq. ft	Yes
22	Bonus Room	19'7" x 14'7"	234 sq. ft	Yes
23	Bath	4'9" x 10'0"	48 sq. ft	Yes
24	Hall	29'11" x 4'1"	181 sq. ft	Yes
25	Open To Below	19'6" x 14'7"	286 sq. ft	No
26	Bedroom	11'11" x 16'9"	175 sq. ft	Yes
27	Open To Below	9'9" x 18'11"	126 sq. ft	No
28	Bath	7'7" x 9'10"	66 sq. ft	Yes

# 196 River Walk Trail, New Market, Madison County, Alabama, United States, 35761

## 1 Floor 1 - Dining Area



Dimensions: 12'6" x 17'6"  
Area: 224 sq. ft  
Counted as living area: Yes

Heated: Yes  
Finished: Yes  
Enclosed: Yes  
Contiguous: Yes  
Permitted: Yes  
Wet space: No  
Addition: No  
Conversion: No

## 2 Floor 1 - Garage



Dimensions: 20'7" x 26'7"  
Area: 558 sq. ft  
Counted as living area: No

Heated: No  
Finished: No  
Enclosed: Yes  
Contiguous: Yes  
Permitted: Yes  
Wet space: No  
Addition: No  
Conversion: No

# 196 River Walk Trail, New Market, Madison County, Alabama, United States, 35761

## 3 Floor 1 - Pantry



Dimensions: 4'6" x 4'1"  
Area: 17 sq. ft  
Counted as living area: Yes

Heated: Yes  
Finished: Yes  
Enclosed: Yes  
Contiguous: Yes  
Permitted: Yes  
Wet space: No  
Addition: No  
Conversion: No

## 4 Floor 1 - Covered Deck



Dimensions: 29'2" x 11'4"  
Area: 332 sq. ft  
Counted as living area: No

Heated: No  
Finished: Yes  
Enclosed: No  
Contiguous: Yes  
Permitted: Yes  
Wet space: No  
Addition: No  
Conversion: No

## 5 Floor 1 - Laundry



Dimensions: 10'1" x 8'0"  
Area: 80 sq. ft  
Counted as living area: Yes

Heated: Yes  
Finished: Yes  
Enclosed: Yes  
Contiguous: Yes  
Permitted: Yes  
Wet space: No  
Addition: No  
Conversion: No

# 196 River Walk Trail, New Market, Madison County, Alabama, United States, 35761

## 6 Floor 1 - Porch



Dimensions: 7'4" x 14'2"  
Area: 105 sq. ft  
Counted as living area: No

Heated: No  
Finished: Yes  
Enclosed: No  
Contiguous: Yes  
Permitted: Yes  
Wet space: No  
Addition: No  
Conversion: No

## 7 Floor 1 - Breakfast Nook



Dimensions: 9'4" x 6'0"  
Area: 56 sq. ft  
Counted as living area: Yes

Heated: Yes  
Finished: Yes  
Enclosed: Yes  
Contiguous: Yes  
Permitted: Yes  
Wet space: No  
Addition: No  
Conversion: No

## 8 Floor 1 - Primary Bedroom

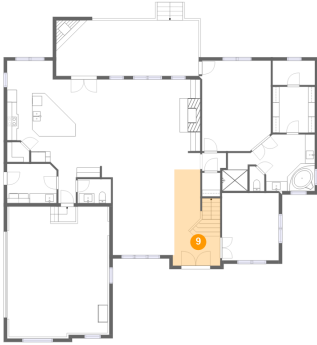


Dimensions: 14'1" x 18'6"  
Area: 252 sq. ft  
Counted as living area: Yes

Heated: Yes  
Finished: Yes  
Enclosed: Yes  
Contiguous: Yes  
Permitted: Yes  
Wet space: No  
Addition: No  
Conversion: No

# 196 River Walk Trail, New Market, Madison County, Alabama, United States, 35761

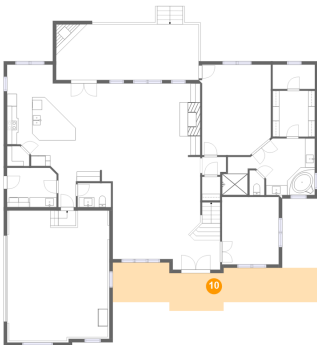
## 9 Floor 1 - Foyer



Dimensions: 9'4" x 19'8"  
Area: 160 sq. ft  
Counted as living area: Yes

Heated: Yes  
Finished: Yes  
Enclosed: Yes  
Contiguous: Yes  
Permitted: Yes  
Wet space: No  
Addition: No  
Conversion: No

## 10 Floor 1 - Porch



Dimensions: 42'1" x 7'0"  
Area: 316 sq. ft  
Counted as living area: No

Heated: No  
Finished: Yes  
Enclosed: No  
Contiguous: Yes  
Permitted: Yes  
Wet space: No  
Addition: No  
Conversion: No

## 11 Floor 1 - W.I.C.



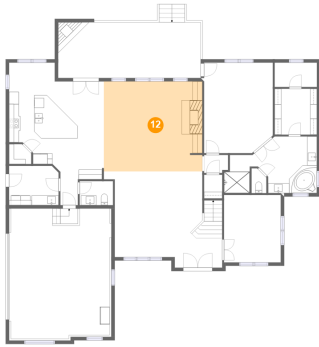
Dimensions: 8'8" x 9'4"  
Area: 81 sq. ft  
Counted as living area: Yes

Heated: Yes  
Finished: Yes  
Enclosed: Yes  
Contiguous: Yes  
Permitted: Yes  
Wet space: No  
Addition: No  
Conversion: No



# 196 River Walk Trail, New Market, Madison County, Alabama, United States, 35761

## 12 Floor 1 - Great Room



Dimensions: 20'2" x 18'5"  
Area: 369 sq. ft  
Counted as living area: Yes

Heated: Yes  
Finished: Yes  
Enclosed: Yes  
Contiguous: Yes  
Permitted: Yes  
Wet space: No  
Addition: No  
Conversion: No

## 13 Floor 1 - WC



Dimensions: 3'0" x 5'1"  
Area: 14 sq. ft  
Counted as living area: Yes

Heated: Yes  
Finished: Yes  
Enclosed: Yes  
Contiguous: Yes  
Permitted: Yes  
Wet space: Yes  
Addition: No  
Conversion: No

## 14 Floor 1 - WC

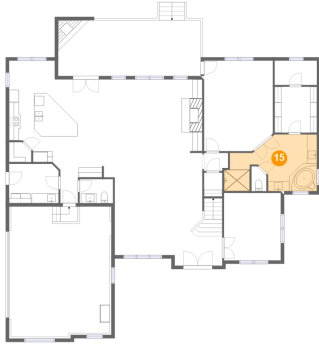


Dimensions: 6'9" x 4'11"  
Area: 33 sq. ft  
Counted as living area: Yes

Heated: Yes  
Finished: Yes  
Enclosed: Yes  
Contiguous: Yes  
Permitted: Yes  
Wet space: Yes  
Addition: No  
Conversion: No

# 196 River Walk Trail, New Market, Madison County, Alabama, United States, 35761

## 15 Floor 1 - Primary Bath



Dimensions: 17'10" x 11'7"  
Area: 167 sq. ft  
Counted as living area: Yes

Heated: Yes  
Finished: Yes  
Enclosed: Yes  
Contiguous: Yes  
Permitted: Yes  
Wet space: Yes  
Addition: No  
Conversion: No

## 16 Floor 1 - Office



Dimensions: 11'7" x 13'9"  
Area: 160 sq. ft  
Counted as living area: Yes

Heated: Yes  
Finished: Yes  
Enclosed: Yes  
Contiguous: Yes  
Permitted: Yes  
Wet space: No  
Addition: No  
Conversion: No

## 17 Floor 1 - W.I.C.



Dimensions: 8'8" x 5'0"  
Area: 43 sq. ft  
Counted as living area: Yes

Heated: Yes  
Finished: Yes  
Enclosed: Yes  
Contiguous: Yes  
Permitted: Yes  
Wet space: No  
Addition: No  
Conversion: No

# 196 River Walk Trail, New Market, Madison County, Alabama, United States, 35761

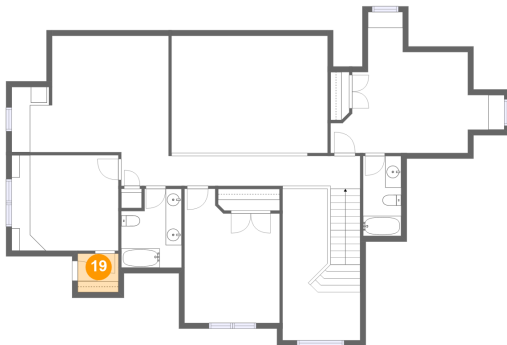
## 18 Floor 1 - Kitchen



Dimensions: 19'5" x 20'0"  
Area: 335 sq. ft  
Counted as living area: Yes

Heated: Yes  
Finished: Yes  
Enclosed: Yes  
Contiguous: Yes  
Permitted: Yes  
Wet space: No  
Addition: No  
Conversion: No

## 19 Floor 2 - W.I.C.



Dimensions: 5'1" x 4'10"  
Area: 25 sq. ft  
Counted as living area: Yes

Heated: Yes  
Finished: Yes  
Enclosed: Yes  
Contiguous: Yes  
Permitted: Yes  
Wet space: No  
Addition: No  
Conversion: No

## 20 Floor 2 - Bedroom



Dimensions: 13'4" x 11'11"  
Area: 159 sq. ft  
Counted as living area: Yes

Heated: Yes  
Finished: Yes  
Enclosed: Yes  
Contiguous: Yes  
Permitted: Yes  
Wet space: No  
Addition: No  
Conversion: No

# 196 River Walk Trail, New Market, Madison County, Alabama, United States, 35761

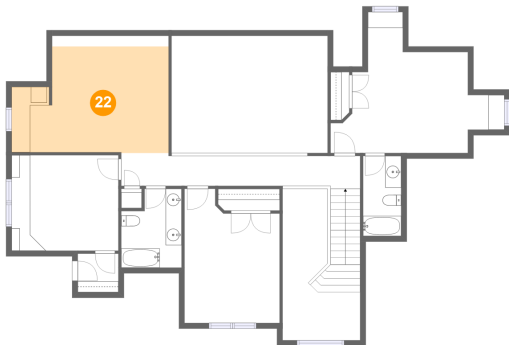
## 21 Floor 2 - Bedroom



Dimensions: 17'2" x 15'7"  
Area: 230 sq. ft  
Counted as living area: Yes

Heated: Yes  
Finished: Yes  
Enclosed: Yes  
Contiguous: Yes  
Permitted: Yes  
Wet space: No  
Addition: No  
Conversion: No

## 22 Floor 2 - Bonus Room



Dimensions: 19'7" x 14'7"  
Area: 234 sq. ft  
Counted as living area: Yes

Heated: Yes  
Finished: Yes  
Enclosed: Yes  
Contiguous: Yes  
Permitted: Yes  
Wet space: No  
Addition: No  
Conversion: No

## 23 Floor 2 - Bath

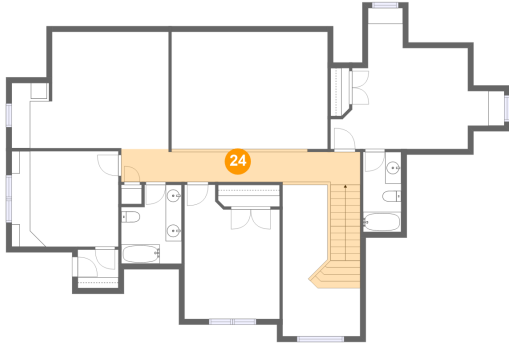


Dimensions: 4'9" x 10'0"  
Area: 48 sq. ft  
Counted as living area: Yes

Heated: Yes  
Finished: Yes  
Enclosed: Yes  
Contiguous: Yes  
Permitted: Yes  
Wet space: Yes  
Addition: No  
Conversion: No

# 196 River Walk Trail, New Market, Madison County, Alabama, United States, 35761

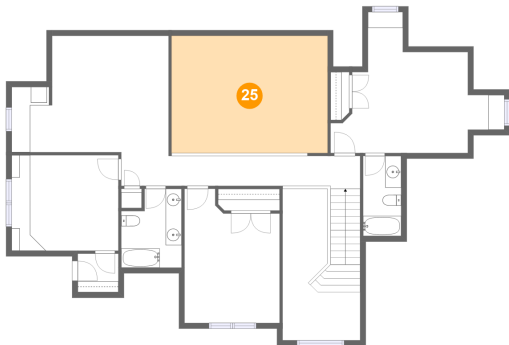
## 24 Floor 2 - Hall



Dimensions: 29'11" x 4'1"  
Area: 181 sq. ft  
Counted as living area: Yes

Heated: Yes  
Finished: Yes  
Enclosed: Yes  
Contiguous: Yes  
Permitted: Yes  
Wet space: No  
Addition: No  
Conversion: No

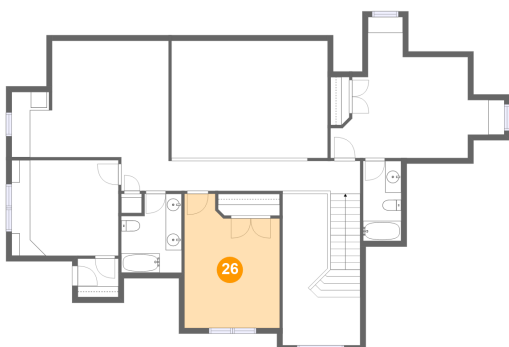
## 25 Floor 2 - Open To Below



Dimensions: 19'6" x 14'7"  
Area: 286 sq. ft  
Counted as living area: No

Heated: No  
Finished: No  
Enclosed: No  
Contiguous: Yes  
Permitted: No  
Wet space: No  
Addition: No  
Conversion: No

## 26 Floor 2 - Bedroom

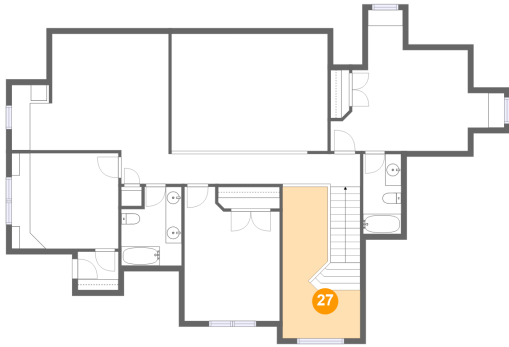


Dimensions: 11'11" x 16'9"  
Area: 175 sq. ft  
Counted as living area: Yes

Heated: Yes  
Finished: Yes  
Enclosed: Yes  
Contiguous: Yes  
Permitted: Yes  
Wet space: No  
Addition: No  
Conversion: No

# 196 River Walk Trail, New Market, Madison County, Alabama, United States, 35761

## 27 Floor 2 - Open To Below



Dimensions: 9'9" x 18'11"  
Area: 126 sq. ft  
Counted as living area: No

Heated: No  
Finished: No  
Enclosed: No  
Contiguous: Yes  
Permitted: No  
Wet space: No  
Addition: No  
Conversion: No

## 28 Floor 2 - Bath



Dimensions: 7'7" x 9'10"  
Area: 66 sq. ft  
Counted as living area: Yes

Heated: Yes  
Finished: Yes  
Enclosed: Yes  
Contiguous: Yes  
Permitted: Yes  
Wet space: Yes  
Addition: No  
Conversion: No