

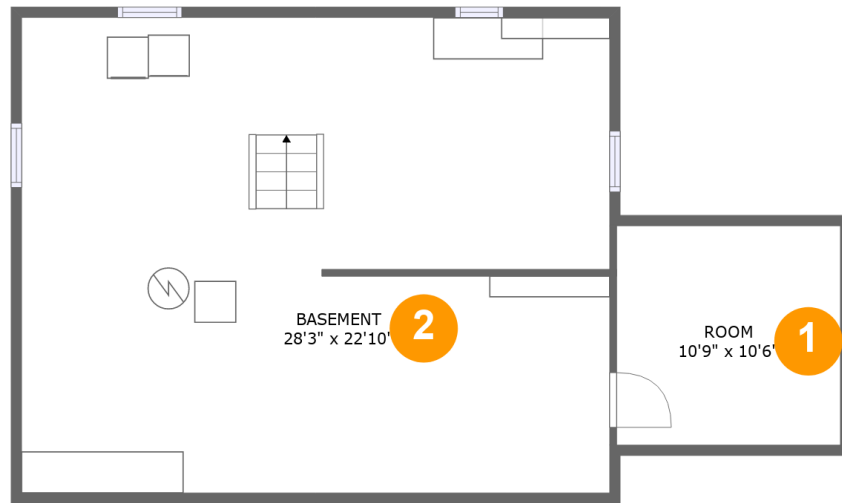
1032 W Rogers St, Osceola, IN, US



Property summary



1032 W Rogers St, Osceola, IN, US



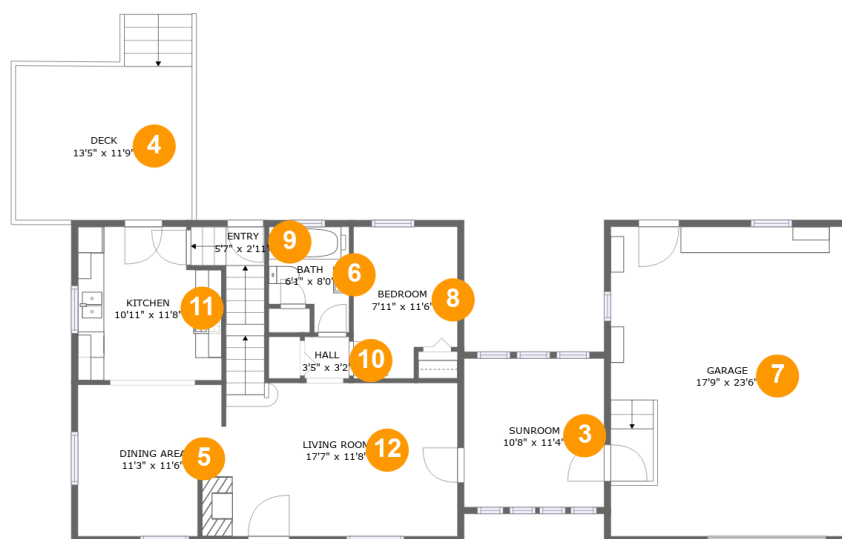
Room dimensions

Floor 1

Total sqft: 825

Living area: 0

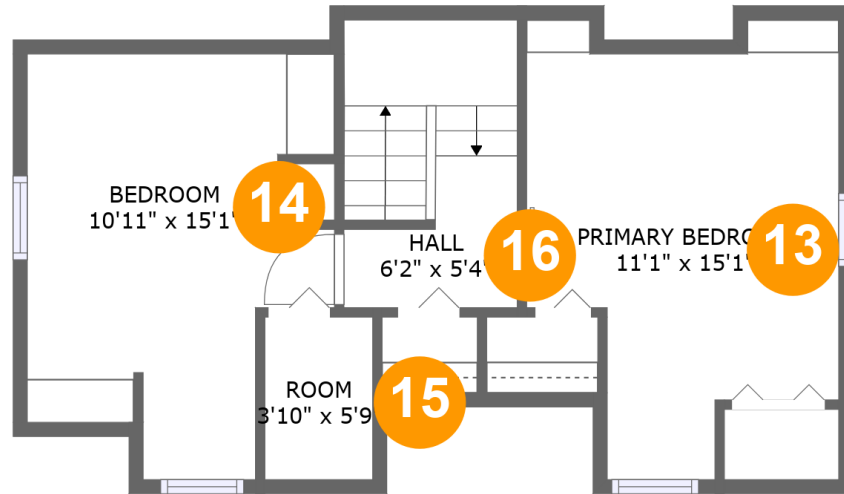
#		Dimensions	sqft	Counted as living area
1	Room	10'9" x 10'6"	113 sq. ft	No
2	Basement	28'3" x 22'10"	640 sq. ft	No

1032 W Rogers St, Osceola, IN, US**Room dimensions**

Floor 2

Total sqft: 1480 Living area: 869

#		Dimensions	sqft	Counted as living area
3	Sunroom	10'8" x 11'4"	120 sq. ft	Yes
4	Deck	13'5" x 11'9"	157 sq. ft	No
5	Dining Area	11'3" x 11'6"	127 sq. ft	Yes
6	Bath	6'1" x 8'0"	42 sq. ft	Yes
7	Garage	17'9" x 23'6"	417 sq. ft	No
8	Bedroom	7'11" x 11'6"	83 sq. ft	Yes
9	Entry	5'7" x 2'11"	31 sq. ft	Yes
10	Hall	3'5" x 3'2"	11 sq. ft	Yes
11	Kitchen	10'11" x 11'8"	119 sq. ft	Yes
12	Living Room	17'7" x 11'8"	216 sq. ft	Yes

1032 W Rogers St, Osceola, IN, US**Room dimensions**

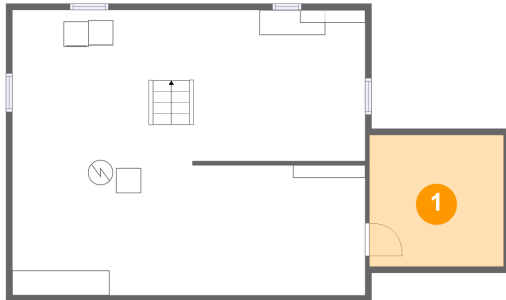
Floor 3

Total sqft: 467 Living area: 374

#		Dimensions	sqft	Counted as living area
13	Primary Bedroom	11'1" x 15'1"	119 sq. ft	Yes
14	Bedroom	10'11" x 15'1"	112 sq. ft	Yes
15	Room	3'10" x 5'9"	22 sq. ft	Yes
16	Hall	6'2" x 5'4"	62 sq. ft	Yes

1032 W Rogers St, Osceola, IN, US

1 Floor 1 - Room



Dimensions: 10'9" x 10'6"
Area: 113 sq. ft
Counted as living area: No

Heated: Yes
Finished: No
Enclosed: Yes
Contiguous: Yes
Permitted: Yes
Wet space: No
Addition: No
Conversion: No

2 Floor 1 - Basement

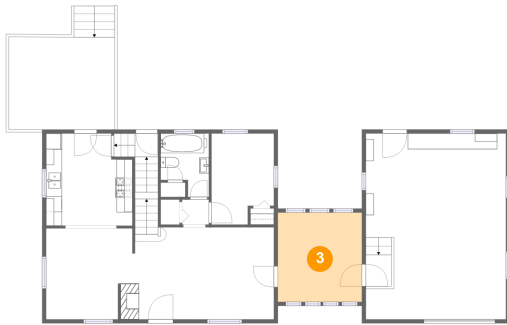


Dimensions: 28'3" x 22'10"
Area: 640 sq. ft
Counted as living area: No

Heated: Yes
Finished: No
Enclosed: Yes
Contiguous: Yes
Permitted: Yes
Wet space: No
Addition: No
Conversion: No

1032 W Rogers St, Osceola, IN, US

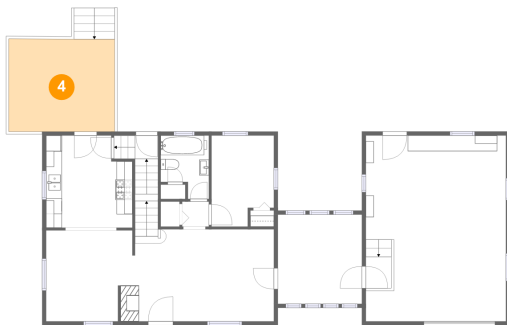
3 Floor 2 - Sunroom



Dimensions: 10'8" x 11'4"
Area: 120 sq. ft
Counted as living area: Yes

Heated: Yes
Finished: Yes
Enclosed: Yes
Contiguous: Yes
Permitted: Yes
Wet space: No
Addition: No
Conversion: No

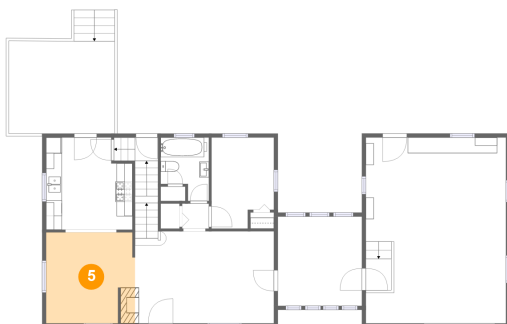
4 Floor 2 - Deck



Dimensions: 13'5" x 11'9"
Area: 157 sq. ft
Counted as living area: No

Heated: No
Finished: Yes
Enclosed: No
Contiguous: Yes
Permitted: Yes
Wet space: No
Addition: No
Conversion: No

5 Floor 2 - Dining Area

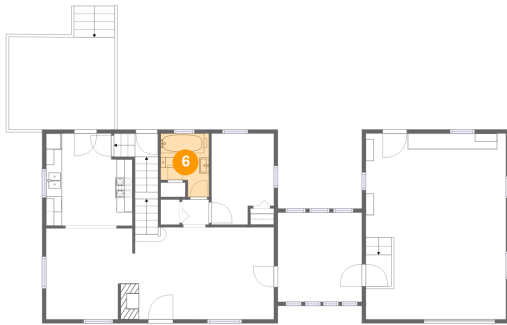


Dimensions: 11'3" x 11'6"
Area: 127 sq. ft
Counted as living area: Yes

Heated: Yes
Finished: Yes
Enclosed: Yes
Contiguous: Yes
Permitted: Yes
Wet space: No
Addition: No
Conversion: No

1032 W Rogers St, Osceola, IN, US

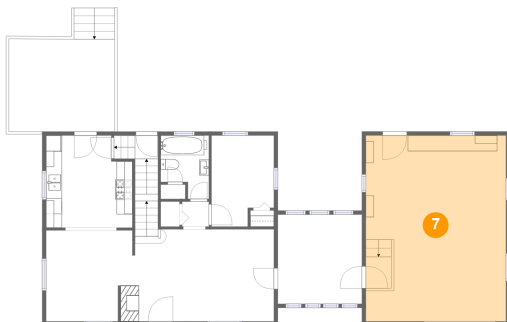
6 Floor 2 - Bath



Dimensions: 6'1" x 8'0"
Area: 42 sq. ft
Counted as living area: Yes

Heated: Yes
Finished: Yes
Enclosed: Yes
Contiguous: Yes
Permitted: Yes
Wet space: Yes
Addition: No
Conversion: No

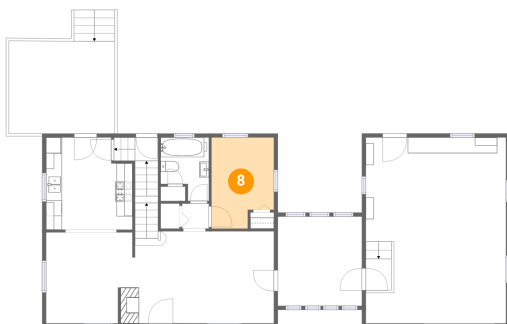
7 Floor 2 - Garage



Dimensions: 17'9" x 23'6"
Area: 417 sq. ft
Counted as living area: No

Heated: No
Finished: No
Enclosed: Yes
Contiguous: Yes
Permitted: Yes
Wet space: No
Addition: No
Conversion: No

8 Floor 2 - Bedroom

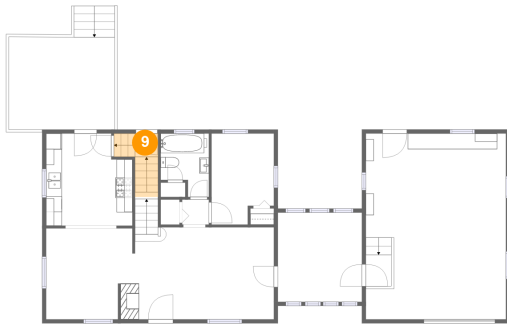


Dimensions: 7'11" x 11'6"
Area: 83 sq. ft
Counted as living area: Yes

Heated: Yes
Finished: Yes
Enclosed: Yes
Contiguous: Yes
Permitted: Yes
Wet space: No
Addition: No
Conversion: No

1032 W Rogers St, Osceola, IN, US

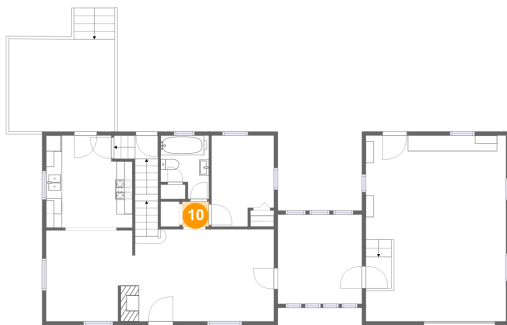
9 Floor 2 - Entry



Dimensions: 5'7" x 2'11"
Area: 31 sq. ft
Counted as living area: Yes

Heated: Yes
Finished: Yes
Enclosed: Yes
Contiguous: Yes
Permitted: Yes
Wet space: No
Addition: No
Conversion: No

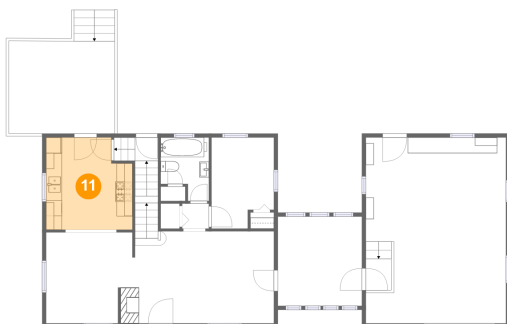
10 Floor 2 - Hall



Dimensions: 3'5" x 3'2"
Area: 11 sq. ft
Counted as living area: Yes

Heated: Yes
Finished: Yes
Enclosed: Yes
Contiguous: Yes
Permitted: Yes
Wet space: No
Addition: No
Conversion: No

11 Floor 2 - Kitchen

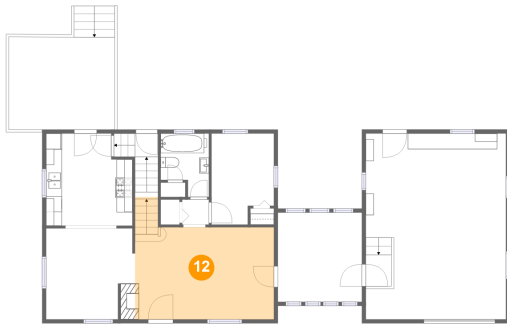


Dimensions: 10'11" x 11'8"
Area: 119 sq. ft
Counted as living area: Yes

Heated: Yes
Finished: Yes
Enclosed: Yes
Contiguous: Yes
Permitted: Yes
Wet space: No
Addition: No
Conversion: No

1032 W Rogers St, Osceola, IN, US

12 Floor 2 - Living Room



Dimensions: 17'7" x 11'8"
Area: 216 sq. ft
Counted as living area: Yes

Heated: Yes
Finished: Yes
Enclosed: Yes
Contiguous: Yes
Permitted: Yes
Wet space: No
Addition: No
Conversion: No

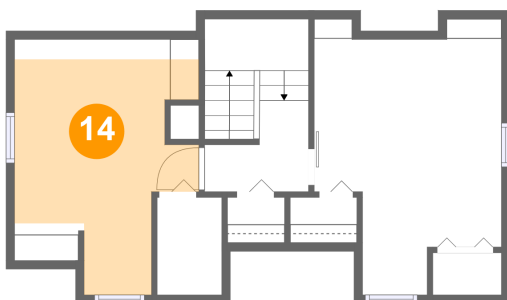
13 Floor 3 - Primary Bedroom



Dimensions: 11'1" x 15'1"
Area: 119 sq. ft
Counted as living area: Yes

Heated: Yes
Finished: Yes
Enclosed: Yes
Contiguous: Yes
Permitted: Yes
Wet space: No
Addition: No
Conversion: No

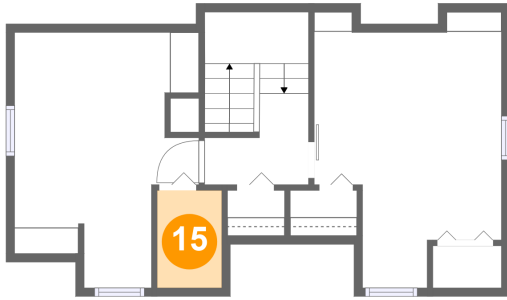
14 Floor 3 - Bedroom



Dimensions: 10'11" x 15'1"
Area: 112 sq. ft
Counted as living area: Yes

Heated: Yes
Finished: Yes
Enclosed: Yes
Contiguous: Yes
Permitted: Yes
Wet space: No
Addition: No
Conversion: No

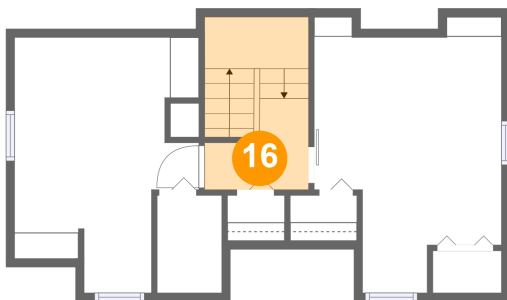
15 Floor 3 - Room



Dimensions: 3'10" x 5'9"
Area: 22 sq. ft
Counted as living area: Yes

Heated: Yes
Finished: Yes
Enclosed: Yes
Contiguous: Yes
Permitted: Yes
Wet space: No
Addition: No
Conversion: No

16 Floor 3 - Hall



Dimensions: 6'2" x 5'4"
Area: 62 sq. ft
Counted as living area: Yes

Heated: Yes
Finished: Yes
Enclosed: Yes
Contiguous: Yes
Permitted: Yes
Wet space: No
Addition: No
Conversion: No