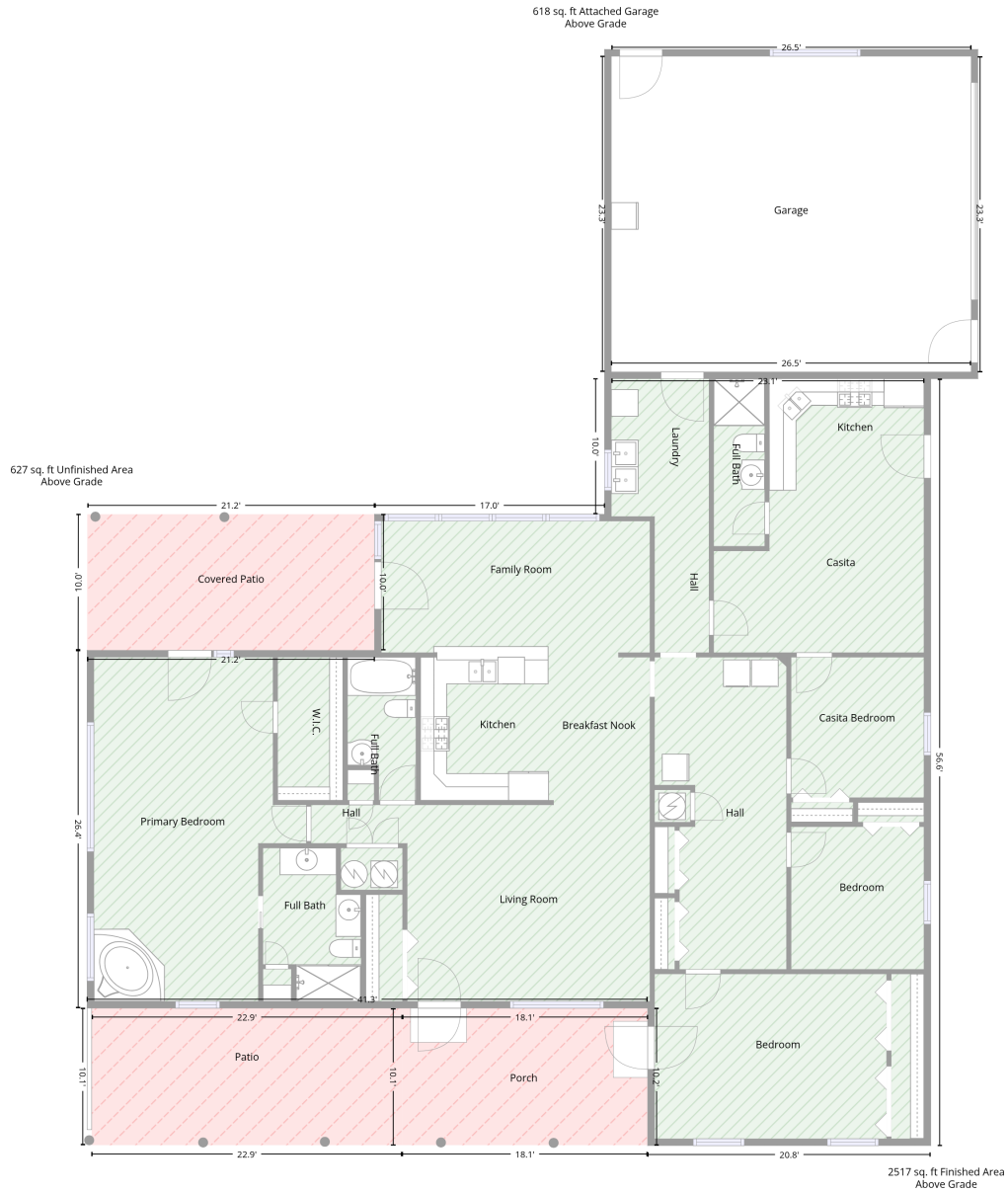


# 3661 East Antelope Road, Pearce, Cochise County, Arizona, United States, 85625

Total area: 2517 sq. ft  
Gross living area: 2517 sq. ft

Finished area: 2517 sq. ft  
Non-standard finished area: 0 sq. ft

## Level 1



Total area: 2517 sq. ft  
Gross living area: 2517 sq. ft

Finished area: 2517 sq. ft  
Non-standard finished area: 0 sq. ft

# 3661 East Antelope Road, Pearce, Cochise County, Arizona, United States, 85625

Total area: 2517 sq. ft

Gross living area: 2517 sq. ft

Finished area: 2517 sq. ft

Non-standard finished area: 0 sq. ft

## Level 1

Space	Area (sq. ft)	Calculation <small>Coordinate Polygon Area Algorithm using inches</small>
Finished Area <ul style="list-style-type: none"><li>• Living area</li><li>• Finished Area</li></ul>	2517	$-\left((824.7 + 824.7) * (280.6 - 286.6) + (824.7 + 830.7) * (286.6 - 286.6) + (830.7 + 830.7) * (286.6 - 965.4) + (830.7 + 580.2) * (965.4 - 965.4) + (580.2 + 580.2) * (965.4 - 843.7) + (580.2 + 84.2) * (843.7 - 843.7) + (84.2 + 84.2) * (843.7 - 527.1) + (84.2 + 338.5) * (527.1 - 527.1) + (338.5 + 338.5) * (527.1 - 406.6) + (338.5 + 542) * (406.6 - 406.6) + (542 + 542) * (406.6 - 286.6) + (542 + 548) * (286.6 - 286.6) + (548 + 548) * (286.6 - 280.6) + (548 + 824.7) * (280.6 - 280.6)\right) * 0.5 * 0.00694$
COVERED PATIO <ul style="list-style-type: none"><li>• Non-living area</li><li>• Unfinished Area</li></ul>	213	$-\left((338.5 + 338.5) * (406.6 - 527.1) + (338.5 + 84.2) * (527.1 - 527.1) + (84.2 + 84.4) * (527.1 - 406.6) + (84.4 + 338.5) * (406.6 - 406.6)\right) * 0.5 * 0.00694$
PATIO <ul style="list-style-type: none"><li>• Non-living area</li><li>• Unfinished Area</li></ul>	231	$-\left((363 + 363) * (843.7 - 964.9) + (363 + 88.2) * (964.9 - 964.9) + (88.2 + 88.2) * (964.9 - 843.7) + (88.2 + 363) * (843.7 - 843.7)\right) * 0.5 * 0.00694$
PORCH <ul style="list-style-type: none"><li>• Non-living area</li><li>• Unfinished Area</li></ul>	183	$-\left((580.2 + 580.2) * (843.7 - 964.9) + (580.2 + 363) * (964.9 - 964.9) + (363 + 363) * (964.9 - 843.7) + (363 + 580.2) * (843.7 - 843.7)\right) * 0.5 * 0.00694$
GARAGE <ul style="list-style-type: none"><li>• Attached Garage</li></ul>	618	$-\left((866.4 + 866.4) * (1.2 - 280.6) + (866.4 + 548) * (280.6 - 280.6) + (548 + 548) * (280.6 - 1.2) + (548 + 866.4) * (1.2 - 1.2)\right) * 0.5 * 0.00694$

# 3661 East Antelope Road, Pearce, Cochise County, Arizona, United States, 85625

Total area: 2517 sq. ft  
Gross living area: 2517 sq. ft

Finished area: 2517 sq. ft  
Non-standard finished area: 0 sq. ft

## Property UPD

Data	Value
Structure	1
Unit	1
Level Number	1
Below Grade	false
Level Low Ceiling	false
ADU Indicator	false
Total Area	2517
Finished Area	2517
Non-Standard Finished Area	0