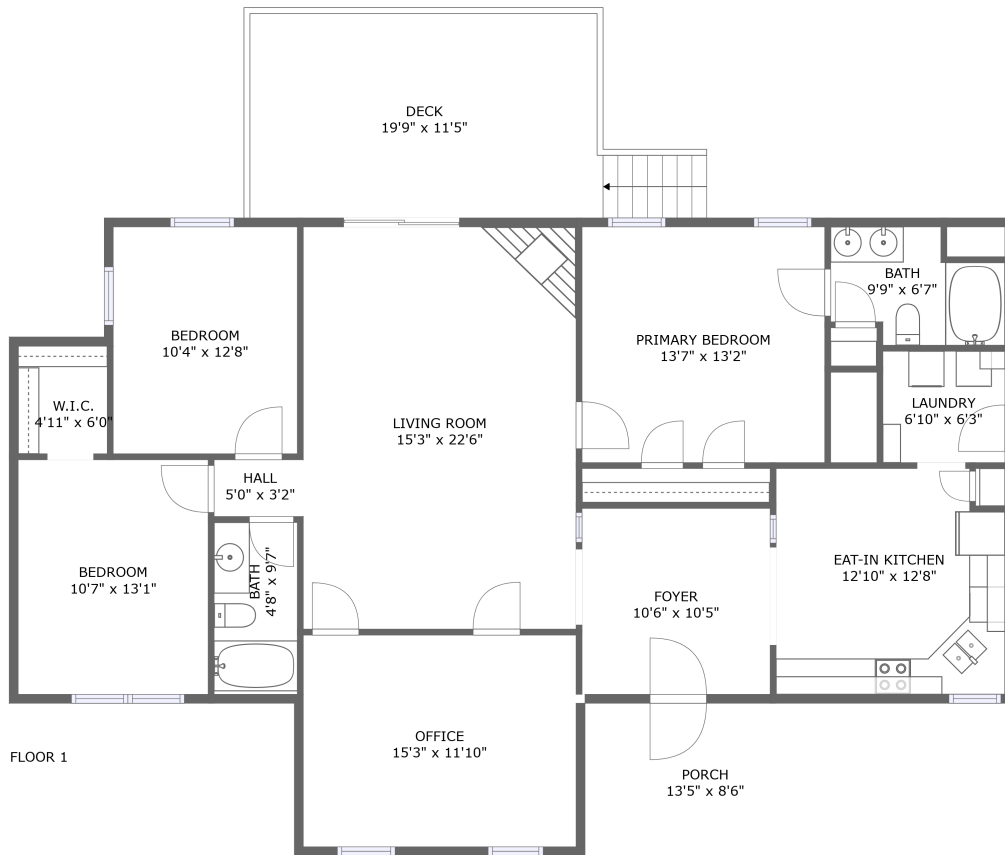



# 106 Village Drive, Vinton, Bedford County, Virginia, United States, 24179



## Property summary

 **0** Garages

 **3** Bedrooms

 **2** Bathrooms

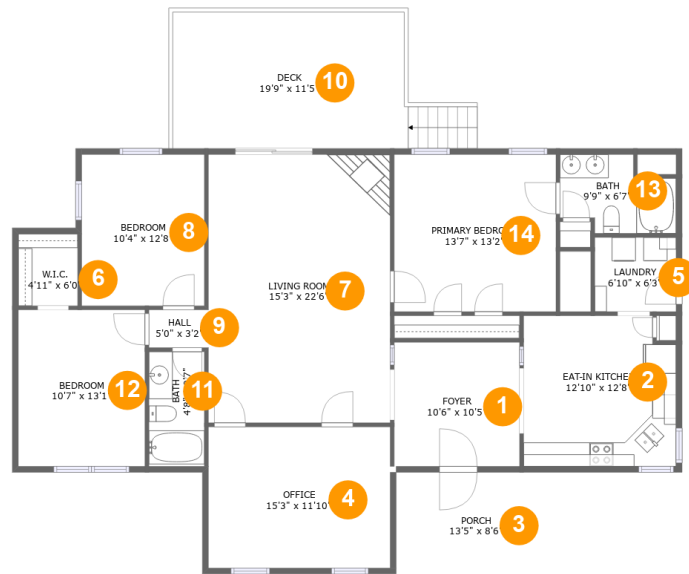
 **0** Half baths

 **1** Floors

 **1,628** Gross living area sqft

 **1,987** Total sqft

# 106 Village Drive, Vinton, Bedford County, Virginia, United States, 24179



## Room dimensions

Floor 1

Total sqft: 1987 Living area: 1628

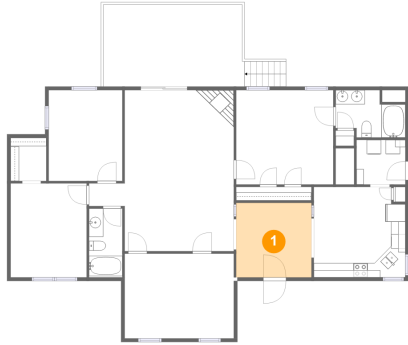
#		Dimensions	sqft	Counted as living area
1	Foyer	10'6" x 10'5"	109 sq. ft	Yes
2	Eat-in Kitchen	12'10" x 12'8"	157 sq. ft	Yes
3	Porch	13'5" x 8'6"	115 sq. ft	No
4	Office	15'3" x 11'10"	181 sq. ft	Yes
5	Laundry	6'10" x 6'3"	42 sq. ft	Yes
6	W.I.C.	4'11" x 6'0"	30 sq. ft	Yes
7	Living Room	15'3" x 22'6"	343 sq. ft	Yes
8	Bedroom	10'4" x 12'8"	131 sq. ft	Yes
9	Hall	5'0" x 3'2"	16 sq. ft	Yes
10	Deck	19'9" x 11'5"	244 sq. ft	No
11	Bath	4'8" x 9'7"	45 sq. ft	Yes

**106 Village Drive, Vinton, Bedford County, Virginia,  
United States, 24179**

#		Dimensions	sqft	Counted as living area
12	Bedroom	10'7" x 13'1"	139 sq. ft	Yes
13	Bath	9'9" x 6'7"	54 sq. ft	Yes
14	Primary Bedroom	13'7" x 13'2"	179 sq. ft	Yes

# 106 Village Drive, Vinton, Bedford County, Virginia, United States, 24179

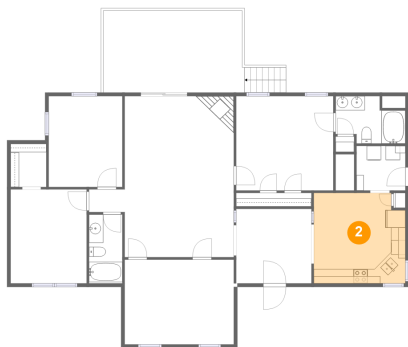
## 1 Floor 1 - Foyer



**Dimensions:** 10'6" x 10'5"  
**Area:** 109 sq. ft  
**Counted as living area:** Yes

**Heated:** Yes  
**Finished:** Yes  
**Enclosed:** Yes  
**Contiguous:** Yes  
**Permitted:** Yes  
**Wet space:** No  
**Addition:** No  
**Conversion:** No

## 2 Floor 1 - Eat-in Kitchen

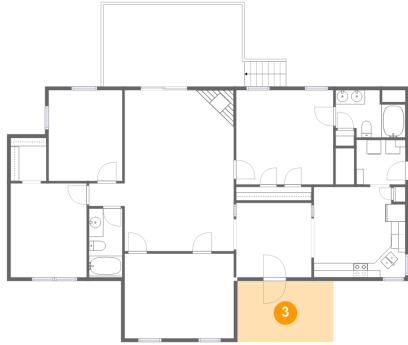


**Dimensions:** 12'10" x 12'8"  
**Area:** 157 sq. ft  
**Counted as living area:** Yes

**Heated:** Yes  
**Finished:** Yes  
**Enclosed:** Yes  
**Contiguous:** Yes  
**Permitted:** Yes  
**Wet space:** No  
**Addition:** No  
**Conversion:** No

# 106 Village Drive, Vinton, Bedford County, Virginia, United States, 24179

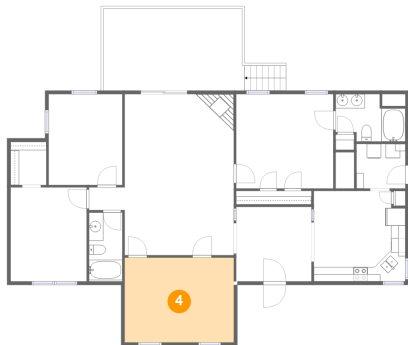
## 3 Floor 1 - Porch



**Dimensions:** 13'5" x 8'6"  
**Area:** 115 sq. ft  
**Counted as living area:** No

**Heated:** No  
**Finished:** Yes  
**Enclosed:** No  
**Contiguous:** Yes  
**Permitted:** Yes  
**Wet space:** No  
**Addition:** No  
**Conversion:** No

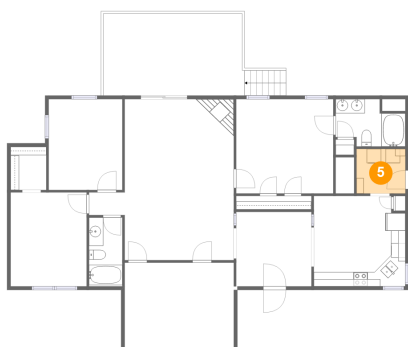
## 4 Floor 1 - Office



**Dimensions:** 15'3" x 11'10"  
**Area:** 181 sq. ft  
**Counted as living area:** Yes

**Heated:** Yes  
**Finished:** Yes  
**Enclosed:** Yes  
**Contiguous:** Yes  
**Permitted:** Yes  
**Wet space:** No  
**Addition:** No  
**Conversion:** No

## 5 Floor 1 - Laundry

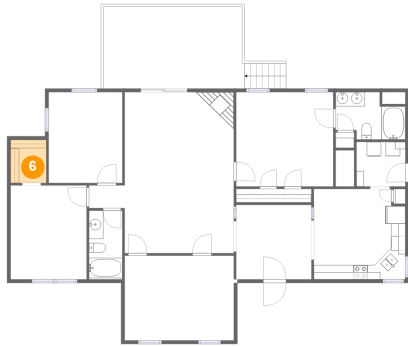


**Dimensions:** 6'10" x 6'3"  
**Area:** 42 sq. ft  
**Counted as living area:** Yes

**Heated:** Yes  
**Finished:** Yes  
**Enclosed:** Yes  
**Contiguous:** Yes  
**Permitted:** Yes  
**Wet space:** No  
**Addition:** No  
**Conversion:** No

# 106 Village Drive, Vinton, Bedford County, Virginia, United States, 24179

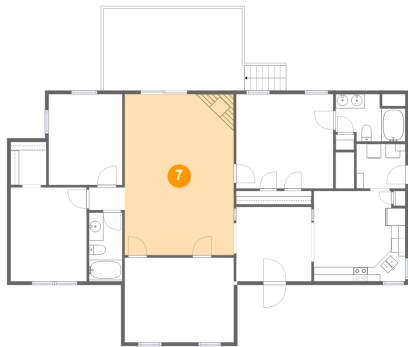
## 6 Floor 1 - W.I.C.



Dimensions: 4'11" x 6'0"  
Area: 30 sq. ft  
Counted as living area: Yes

Heated: Yes  
Finished: Yes  
Enclosed: Yes  
Contiguous: Yes  
Permitted: Yes  
Wet space: No  
Addition: No  
Conversion: No

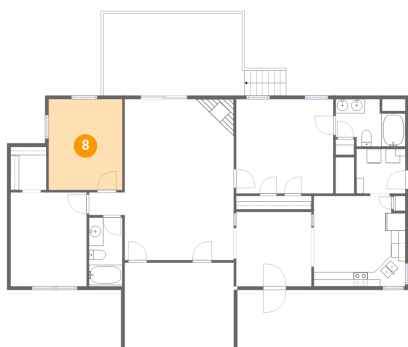
## 7 Floor 1 - Living Room



Dimensions: 15'3" x 22'6"  
Area: 343 sq. ft  
Counted as living area: Yes

Heated: Yes  
Finished: Yes  
Enclosed: Yes  
Contiguous: Yes  
Permitted: Yes  
Wet space: No  
Addition: No  
Conversion: No

## 8 Floor 1 - Bedroom

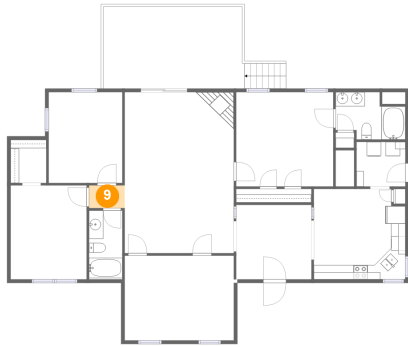


Dimensions: 10'4" x 12'8"  
Area: 131 sq. ft  
Counted as living area: Yes

Heated: Yes  
Finished: Yes  
Enclosed: Yes  
Contiguous: Yes  
Permitted: Yes  
Wet space: No  
Addition: No  
Conversion: No

# 106 Village Drive, Vinton, Bedford County, Virginia, United States, 24179

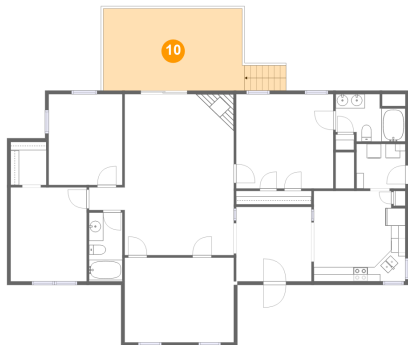
## 9 Floor 1 - Hall



Dimensions: 5'0" x 3'2"  
Area: 16 sq. ft  
Counted as living area: Yes

Heated: Yes  
Finished: Yes  
Enclosed: Yes  
Contiguous: Yes  
Permitted: Yes  
Wet space: No  
Addition: No  
Conversion: No

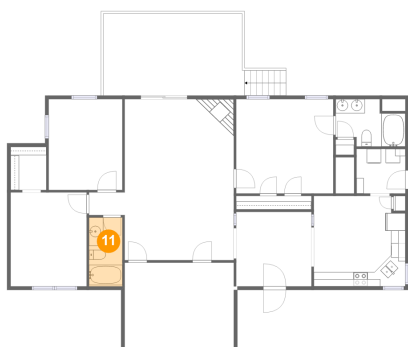
## 10 Floor 1 - Deck



Dimensions: 19'9" x 11'5"  
Area: 244 sq. ft  
Counted as living area: No

Heated: No  
Finished: Yes  
Enclosed: No  
Contiguous: Yes  
Permitted: Yes  
Wet space: No  
Addition: No  
Conversion: No

## 11 Floor 1 - Bath

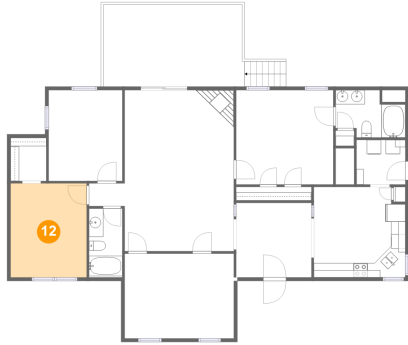


Dimensions: 4'8" x 9'7"  
Area: 45 sq. ft  
Counted as living area: Yes

Heated: Yes  
Finished: Yes  
Enclosed: Yes  
Contiguous: Yes  
Permitted: Yes  
Wet space: Yes  
Addition: No  
Conversion: No

**106 Village Drive, Vinton, Bedford County, Virginia,  
United States, 24179**

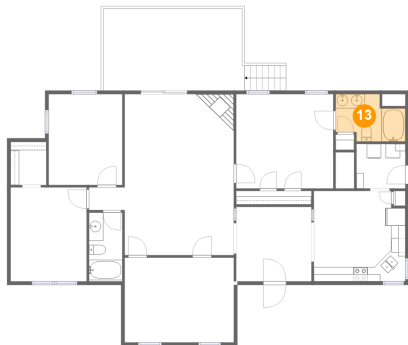
**12 Floor 1 - Bedroom**



**Dimensions:** 10'7" x 13'1"  
**Area:** 139 sq. ft  
**Counted as living area:** Yes

**Heated:** Yes  
**Finished:** Yes  
**Enclosed:** Yes  
**Contiguous:** Yes  
**Permitted:** Yes  
**Wet space:** No  
**Addition:** No  
**Conversion:** No

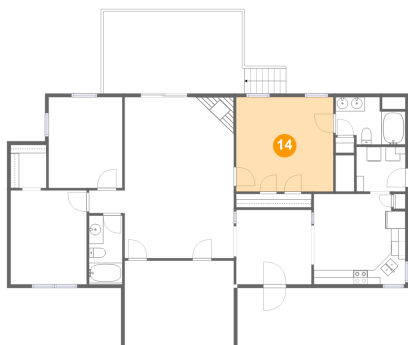
**13 Floor 1 - Bath**



**Dimensions:** 9'9" x 6'7"  
**Area:** 54 sq. ft  
**Counted as living area:** Yes

**Heated:** Yes  
**Finished:** Yes  
**Enclosed:** Yes  
**Contiguous:** Yes  
**Permitted:** Yes  
**Wet space:** Yes  
**Addition:** No  
**Conversion:** No

**14 Floor 1 - Primary Bedroom**



**Dimensions:** 13'7" x 13'2"  
**Area:** 179 sq. ft  
**Counted as living area:** Yes

**Heated:** Yes  
**Finished:** Yes  
**Enclosed:** Yes  
**Contiguous:** Yes  
**Permitted:** Yes  
**Wet space:** No  
**Addition:** No  
**Conversion:** No