

30715 Timberbrook Lane, Bingham Farms, Oakland  
County, Michigan, United States, 48025



Property summary

 **1** Garages


 **4** Bedrooms

 **3** Bathrooms

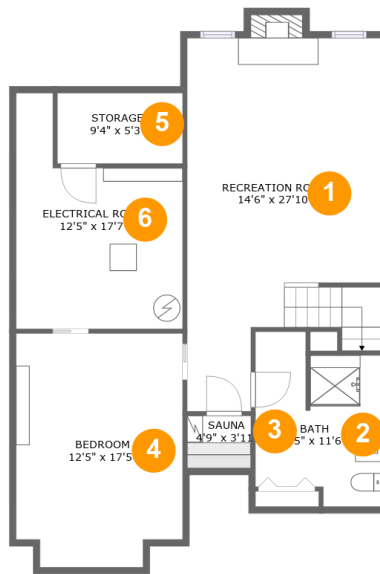
 **1** Half baths

 **3** Floors

 **2,827**  
Gross living  
area sqft

 **3,496**  
Total sqft

# 30715 Timberbrook Lane, Bingham Farms, Oakland County, Michigan, United States, 48025



## Room dimensions

### Floor 1

Total sqft: 994    Living area: 756

#		Dimensions	sqft	Counted as living area
1	Recreation Room	14'6" x 27'10"	354 sq. ft	Yes
2	Bath	9'5" x 11'6"	104 sq. ft	Yes
3	Sauna	4'9" x 3'11"	19 sq. ft	Yes
4	Bedroom	12'5" x 17'5"	207 sq. ft	Yes
5	Storage	9'4" x 5'3"	49 sq. ft	No
6	Electrical Room	12'5" x 17'7"	164 sq. ft	No

# 30715 Timberbrook Lane, Bingham Farms, Oakland County, Michigan, United States, 48025



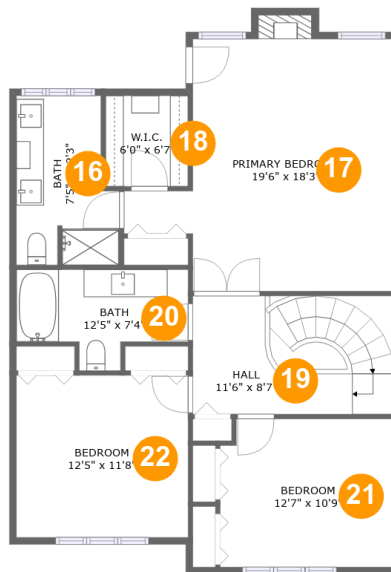
## Room dimensions

Floor 2

Total sqft: 1482    Living area: 1060

#		Dimensions	sqft	Counted as living area
7	Dining Area	12'9" x 12'3"	157 sq. ft	Yes
8	Laundry	6'6" x 5'11"	39 sq. ft	Yes
9	Foyer	8'0" x 13'10"	102 sq. ft	Yes
10	Hall	3'2" x 13'0"	78 sq. ft	Yes
11	Sitting Room	12'5" x 9'10"	113 sq. ft	Yes
12	Living Room	14'6" x 20'0"	272 sq. ft	Yes
13	Kitchen	12'5" x 13'3"	163 sq. ft	Yes
14	WC	3'0" x 7'6"	22 sq. ft	Yes
15	Garage	16'11" x 25'2"	375 sq. ft	No

# 30715 Timberbrook Lane, Bingham Farms, Oakland County, Michigan, United States, 48025



## Room dimensions

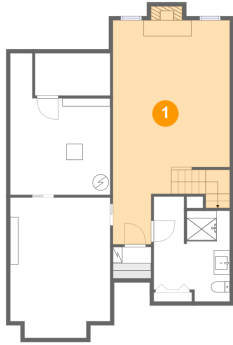
Floor 3

Total sqft: 1020    Living area: 1011

#		Dimensions	sqft	Counted as living area
16	Bath	7'5" x 12'3"	81 sq. ft	Yes
17	Primary Bedroom	19'6" x 18'3"	287 sq. ft	Yes
18	W.I.C.	6'0" x 6'7"	39 sq. ft	Yes
19	Hall	11'6" x 8'7"	124 sq. ft	Yes
20	Bath	12'5" x 7'4"	71 sq. ft	Yes
21	Bedroom	12'7" x 10'9"	132 sq. ft	Yes
22	Bedroom	12'5" x 11'8"	146 sq. ft	Yes

**30715 Timberbrook Lane, Bingham Farms, Oakland  
County, Michigan, United States, 48025**

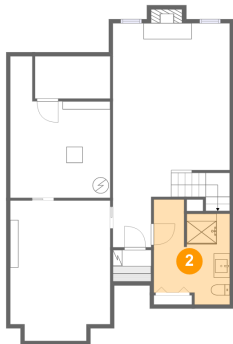
## 1 Floor 1 - Recreation Room



**Dimensions:** 14'6" x 27'10"  
**Area:** 354 sq. ft  
**Counted as living area:** Yes

**Heated:** Yes  
**Finished:** Yes  
**Enclosed:** Yes  
**Contiguous:** Yes  
**Permitted:** Yes  
**Wet space:** No  
**Addition:** No  
**Conversion:** No

## 2 Floor 1 - Bath

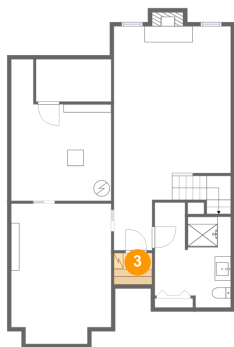


**Dimensions:** 9'5" x 11'6"  
**Area:** 104 sq. ft  
**Counted as living area:** Yes

**Heated:** Yes  
**Finished:** Yes  
**Enclosed:** Yes  
**Contiguous:** Yes  
**Permitted:** Yes  
**Wet space:** Yes  
**Addition:** No  
**Conversion:** No

30715 Timberbrook Lane, Bingham Farms, Oakland  
County, Michigan, United States, 48025

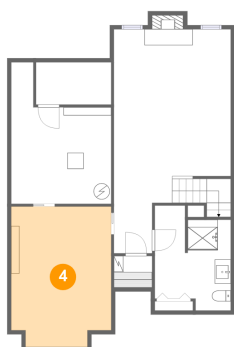
### 3 Floor 1 - Sauna



Dimensions: 4'9" x 3'11"  
Area: 19 sq. ft  
Counted as living area: Yes

Heated: Yes  
Finished: Yes  
Enclosed: Yes  
Contiguous: Yes  
Permitted: Yes  
Wet space: No  
Addition: No  
Conversion: No

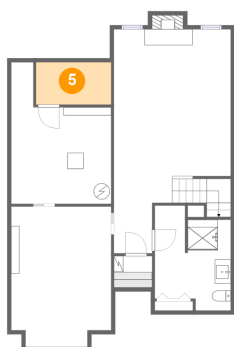
### 4 Floor 1 - Bedroom



Dimensions: 12'5" x 17'5"  
Area: 207 sq. ft  
Counted as living area: Yes

Heated: Yes  
Finished: Yes  
Enclosed: Yes  
Contiguous: Yes  
Permitted: Yes  
Wet space: No  
Addition: No  
Conversion: No

### 5 Floor 1 - Storage

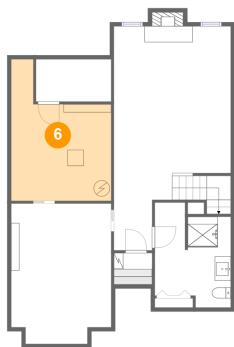


Dimensions: 9'4" x 5'3"  
Area: 49 sq. ft  
Counted as living area: No

Heated: No  
Finished: No  
Enclosed: No  
Contiguous: Yes  
Permitted: Yes  
Wet space: No  
Addition: No  
Conversion: No

**30715 Timberbrook Lane, Bingham Farms, Oakland  
County, Michigan, United States, 48025**

## **6** Floor 1 - Electrical Room



Dimensions: 12'5" x 17'7"  
Area: 164 sq. ft  
Counted as living area: No

Heated: No  
Finished: No  
Enclosed: Yes  
Contiguous: Yes  
Permitted: Yes  
Wet space: No  
Addition: No  
Conversion: No

## **7** Floor 2 - Dining Area



Dimensions: 12'9" x 12'3"  
Area: 157 sq. ft  
Counted as living area: Yes

Heated: Yes  
Finished: Yes  
Enclosed: Yes  
Contiguous: Yes  
Permitted: Yes  
Wet space: No  
Addition: No  
Conversion: No

## **8** Floor 2 - Laundry



Dimensions: 6'6" x 5'11"  
Area: 39 sq. ft  
Counted as living area: Yes

Heated: Yes  
Finished: Yes  
Enclosed: Yes  
Contiguous: Yes  
Permitted: Yes  
Wet space: No  
Addition: No  
Conversion: No

30715 Timberbrook Lane, Bingham Farms, Oakland  
County, Michigan, United States, 48025

## 9 Floor 2 - Foyer



Dimensions: 8'0" x 13'10"  
Area: 102 sq. ft  
Counted as living area: Yes

Heated: Yes  
Finished: Yes  
Enclosed: Yes  
Contiguous: Yes  
Permitted: Yes  
Wet space: No  
Addition: No  
Conversion: No

## 10 Floor 2 - Hall



Dimensions: 3'2" x 13'0"  
Area: 78 sq. ft  
Counted as living area: Yes

Heated: Yes  
Finished: Yes  
Enclosed: Yes  
Contiguous: Yes  
Permitted: Yes  
Wet space: No  
Addition: No  
Conversion: No

## 11 Floor 2 - Sitting Room



Dimensions: 12'5" x 9'10"  
Area: 113 sq. ft  
Counted as living area: Yes

Heated: Yes  
Finished: Yes  
Enclosed: Yes  
Contiguous: Yes  
Permitted: Yes  
Wet space: No  
Addition: No  
Conversion: No



**30715 Timberbrook Lane, Bingham Farms, Oakland  
County, Michigan, United States, 48025**

## **12** Floor 2 - Living Room



**Dimensions:** 14'6" x 20'0"  
**Area:** 272 sq. ft  
**Counted as living area:** Yes

**Heated:** Yes  
**Finished:** Yes  
**Enclosed:** Yes  
**Contiguous:** Yes  
**Permitted:** Yes  
**Wet space:** No  
**Addition:** No  
**Conversion:** No

## **13** Floor 2 - Kitchen



**Dimensions:** 12'5" x 13'3"  
**Area:** 163 sq. ft  
**Counted as living area:** Yes

**Heated:** Yes  
**Finished:** Yes  
**Enclosed:** Yes  
**Contiguous:** Yes  
**Permitted:** Yes  
**Wet space:** No  
**Addition:** No  
**Conversion:** No

## **14** Floor 2 - WC



**Dimensions:** 3'0" x 7'6"  
**Area:** 22 sq. ft  
**Counted as living area:** Yes

**Heated:** Yes  
**Finished:** Yes  
**Enclosed:** Yes  
**Contiguous:** Yes  
**Permitted:** Yes  
**Wet space:** Yes  
**Addition:** No  
**Conversion:** No

30715 Timberbrook Lane, Bingham Farms, Oakland  
County, Michigan, United States, 48025

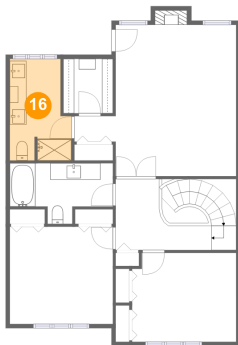
### 15 Floor 2 - Garage



Dimensions: 16'11" x 25'2"  
Area: 375 sq. ft  
Counted as living area: No

Heated: No  
Finished: No  
Enclosed: Yes  
Contiguous: Yes  
Permitted: Yes  
Wet space: No  
Addition: No  
Conversion: No

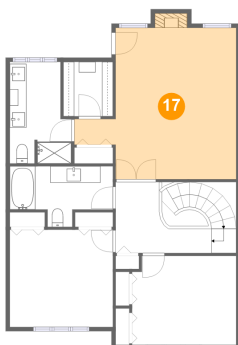
### 16 Floor 3 - Bath



Dimensions: 7'5" x 12'3"  
Area: 81 sq. ft  
Counted as living area: Yes

Heated: Yes  
Finished: Yes  
Enclosed: Yes  
Contiguous: Yes  
Permitted: Yes  
Wet space: Yes  
Addition: No  
Conversion: No

### 17 Floor 3 - Primary Bedroom

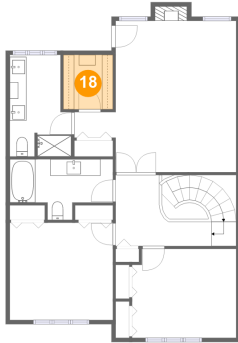


Dimensions: 19'6" x 18'3"  
Area: 287 sq. ft  
Counted as living area: Yes

Heated: Yes  
Finished: Yes  
Enclosed: Yes  
Contiguous: Yes  
Permitted: Yes  
Wet space: No  
Addition: No  
Conversion: No

30715 Timberbrook Lane, Bingham Farms, Oakland  
County, Michigan, United States, 48025

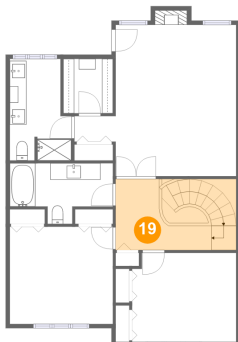
### 18 Floor 3 - W.I.C.



Dimensions: 6'0" x 6'7"  
Area: 39 sq. ft  
Counted as living area: Yes

Heated: Yes  
Finished: Yes  
Enclosed: Yes  
Contiguous: Yes  
Permitted: Yes  
Wet space: No  
Addition: No  
Conversion: No

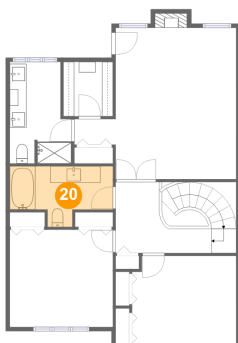
### 19 Floor 3 - Hall



Dimensions: 11'6" x 8'7"  
Area: 124 sq. ft  
Counted as living area: Yes

Heated: Yes  
Finished: Yes  
Enclosed: Yes  
Contiguous: Yes  
Permitted: Yes  
Wet space: No  
Addition: No  
Conversion: No

### 20 Floor 3 - Bath

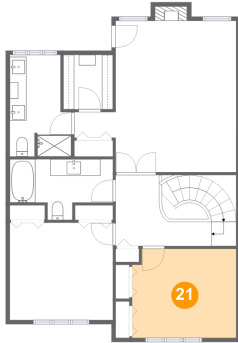


Dimensions: 12'5" x 7'4"  
Area: 71 sq. ft  
Counted as living area: Yes

Heated: Yes  
Finished: Yes  
Enclosed: Yes  
Contiguous: Yes  
Permitted: Yes  
Wet space: Yes  
Addition: No  
Conversion: No

**30715 Timberbrook Lane, Bingham Farms, Oakland  
County, Michigan, United States, 48025**

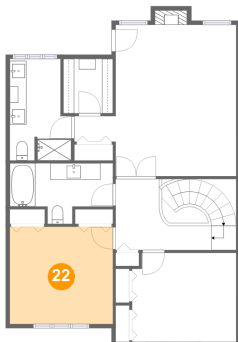
### **21** Floor 3 - Bedroom



Dimensions: 12'7" x 10'9"  
Area: 132 sq. ft  
Counted as living area: Yes

Heated: Yes  
Finished: Yes  
Enclosed: Yes  
Contiguous: Yes  
Permitted: Yes  
Wet space: No  
Addition: No  
Conversion: No

### **22** Floor 3 - Bedroom



Dimensions: 12'5" x 11'8"  
Area: 146 sq. ft  
Counted as living area: Yes

Heated: Yes  
Finished: Yes  
Enclosed: Yes  
Contiguous: Yes  
Permitted: Yes  
Wet space: No  
Addition: No  
Conversion: No