

20825 West 94th Terrace, Lenexa, Johnson County, Kansas,
United States, 66220



Home report

**20825 West 94th Terrace, Lenexa, Johnson County, Kansas,
United States, 66220**



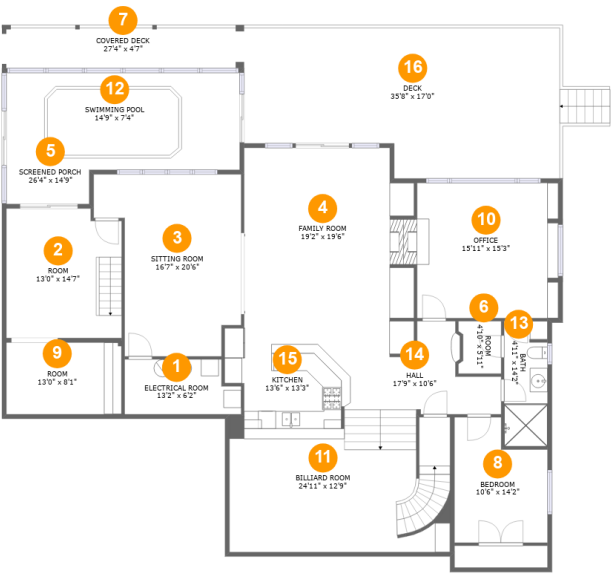
1
Half baths



1
Garages

Home report

20825 West 94th Terrace, Lenexa, Johnson County, Kansas,
United States, 66220



Room dimensions

Floor 1 Total:2170sqft Excluded: 977sqft

| # | | Max Dimensions | sqft | Included |
|----|-----------------|----------------|------------|----------|
| 1 | Electrical Room | 13'2" x 6'2" | 75 sq. ft | No |
| 2 | Room | 13'0" x 14'7" | 185 sq. ft | Yes |
| 3 | Sitting Room | 16'7" x 20'6" | 280 sq. ft | Yes |
| 4 | Family Room | 19'2" x 19'6" | 363 sq. ft | Yes |
| 5 | Screened Porch | 26'4" x 14'9" | 325 sq. ft | No |
| 6 | Room | 4'10" x 5'11" | 27 sq. ft | Yes |
| 7 | Covered Deck | 27'4" x 4'7" | 125 sq. ft | No |
| 8 | Bedroom | 10'6" x 14'2" | 130 sq. ft | Yes |
| 9 | Room | 13'0" x 8'1" | 105 sq. ft | Yes |
| 10 | Office | 15'11" x 15'3" | 243 sq. ft | Yes |
| 11 | Billiard Room | 24'11" x 12'9" | 349 sq. ft | Yes |

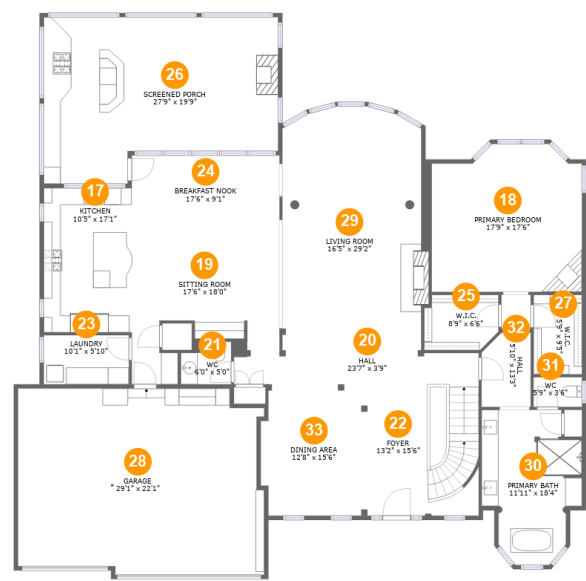
Home report

**20825 West 94th Terrace, Lenexa, Johnson County, Kansas,
United States, 66220**

| # | | Max Dimensions | sqft | Included |
|----|---------------|----------------|------------|----------|
| 12 | Swimming Pool | 14'9" x 7'4" | 108 sq. ft | No |
| 13 | Bath | 4'11" x 14'2" | 69 sq. ft | Yes |
| 14 | Hall | 17'9" x 10'6" | 149 sq. ft | Yes |
| 15 | Kitchen | 13'6" x 13'3" | 168 sq. ft | Yes |
| 16 | Deck | 35'8" x 17'0" | 560 sq. ft | No |

Home report

20825 West 94th Terrace, Lenexa, Johnson County, Kansas,
United States, 66220



Room dimensions

Floor 2 Total:2401sqft Excluded: 1092sqft

| # | | Max Dimensions | sqft | Included |
|----|-----------------|----------------|------------|----------|
| 17 | Kitchen | 10'5" x 17'1" | 178 sq. ft | Yes |
| 18 | Primary Bedroom | 17'9" x 17'6" | 291 sq. ft | Yes |
| 19 | Sitting Room | 17'6" x 18'0" | 266 sq. ft | Yes |
| 20 | Hall | 23'7" x 3'9" | 88 sq. ft | Yes |
| 21 | WC | 6'0" x 5'0" | 28 sq. ft | Yes |
| 22 | Foyer | 13'2" x 15'6" | 203 sq. ft | Yes |
| 23 | Laundry | 10'1" x 5'10" | 59 sq. ft | Yes |
| 24 | Breakfast Nook | 17'6" x 9'1" | 159 sq. ft | Yes |
| 25 | W.I.C. | 8'9" x 6'6" | 54 sq. ft | Yes |
| 26 | Screened Porch | 27'9" x 19'9" | 478 sq. ft | No |
| 27 | W.I.C. | 5'9" x 9'5" | 54 sq. ft | Yes |

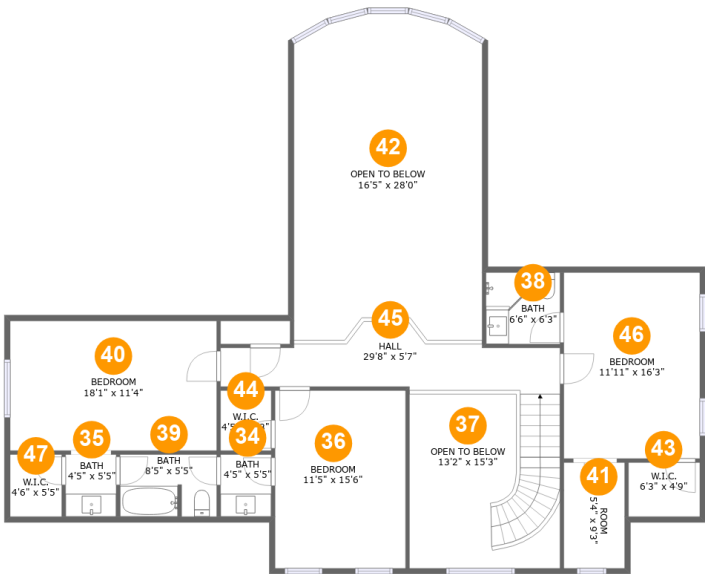
Home report

**20825 West 94th Terrace, Lenexa, Johnson County, Kansas,
United States, 66220**

| # | | Max Dimensions | sqft | Included |
|----|--------------|----------------|------------|----------|
| 28 | Garage | 29'1" x 22'1" | 614 sq. ft | No |
| 29 | Living Room | 16'5" x 29'2" | 473 sq. ft | Yes |
| 30 | Primary Bath | 11'11" x 18'4" | 177 sq. ft | Yes |
| 31 | WC | 5'9" x 3'6" | 20 sq. ft | Yes |
| 32 | Hall | 5'10" x 13'3" | 64 sq. ft | Yes |
| 33 | Dining Area | 12'8" x 15'6" | 189 sq. ft | Yes |

Home report

20825 West 94th Terrace, Lenexa, Johnson County, Kansas,
United States, 66220



Room dimensions

Floor 3 Total:1087sqft Excluded: 589sqft

| # | | Max Dimensions | sqft | Included |
|----|---------------|----------------|------------|----------|
| 34 | Bath | 4'5" x 5'5" | 24 sq. ft | Yes |
| 35 | Bath | 4'5" x 5'5" | 24 sq. ft | Yes |
| 36 | Bedroom | 11'5" x 15'6" | 177 sq. ft | Yes |
| 37 | Open To Below | 13'2" x 15'3" | 146 sq. ft | No |
| 38 | Bath | 6'6" x 6'3" | 40 sq. ft | Yes |
| 39 | Bath | 8'5" x 5'5" | 45 sq. ft | Yes |
| 40 | Bedroom | 18'1" x 11'4" | 205 sq. ft | Yes |
| 41 | Room | 5'4" x 9'3" | 49 sq. ft | Yes |
| 42 | Open To Below | 16'5" x 28'0" | 444 sq. ft | No |
| 43 | W.I.C. | 6'3" x 4'9" | 30 sq. ft | Yes |
| 44 | W.I.C. | 4'5" x 5'3" | 23 sq. ft | Yes |

Home report

**20825 West 94th Terrace, Lenexa, Johnson County, Kansas,
United States, 66220**

| # | | Max Dimensions | sqft | Included |
|----|---------|----------------|------------|----------|
| 45 | Hall | 29'8" x 5'7" | 186 sq. ft | Yes |
| 46 | Bedroom | 11'11" x 16'3" | 193 sq. ft | Yes |
| 47 | W.I.C. | 4'6" x 5'5" | 25 sq. ft | Yes |

20825 West 94th Terrace, Lenexa, Johnson County, Kansas,
United States, 66220

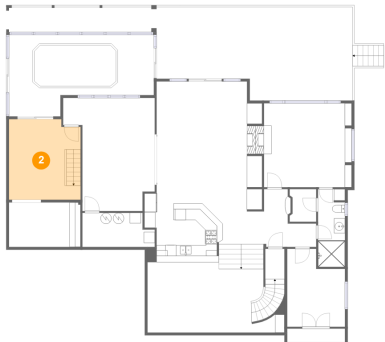
1 Floor 1 - Electrical Room



Max Dimensions: 13'2" x 6'2"
Calculated Area: 75 sq. ft
Included: No

Heated: No
Finished: No
Enclosed: Yes
Contiguous: Yes
Permitted: Yes
Wet space: No
Addition: No
Conversion: No

2 Floor 1 - Room

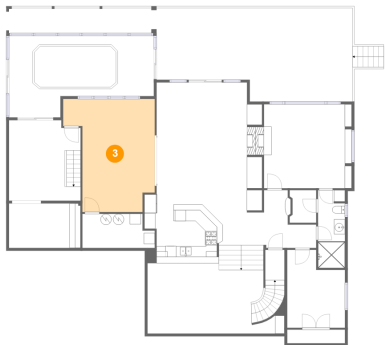


Max Dimensions: 13'0" x 14'7"
Calculated Area: 185 sq. ft
Included: Yes

Heated: Yes
Finished: Yes
Enclosed: Yes
Contiguous: Yes
Permitted: Yes
Wet space: No
Addition: No
Conversion: No

20825 West 94th Terrace, Lenexa, Johnson County, Kansas,
United States, 66220

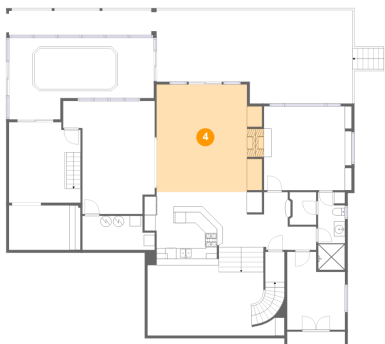
3 Floor 1 - Sitting Room



Max Dimensions: 16'7" x 20'6"
Calculated Area: 280 sq. ft
Included: Yes

Heated: Yes
Finished: Yes
Enclosed: Yes
Contiguous: Yes
Permitted: Yes
Wet space: No
Addition: No
Conversion: No

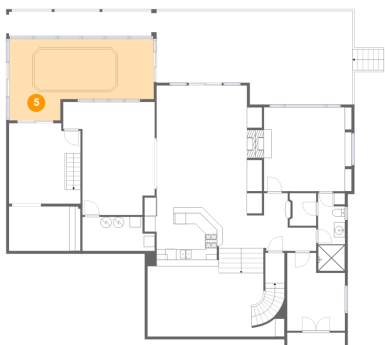
4 Floor 1 - Family Room



Max Dimensions: 19'2" x 19'6"
Calculated Area: 363 sq. ft
Included: Yes

Heated: Yes
Finished: Yes
Enclosed: Yes
Contiguous: Yes
Permitted: Yes
Wet space: No
Addition: No
Conversion: No

5 Floor 1 - Screened Porch



Max Dimensions: 26'4" x 14'9"
Calculated Area: 325 sq. ft
Included: No

Heated: No
Finished: Yes
Enclosed: No
Contiguous: Yes
Permitted: Yes
Wet space: No
Addition: No
Conversion: No

20825 West 94th Terrace, Lenexa, Johnson County, Kansas,
United States, 66220

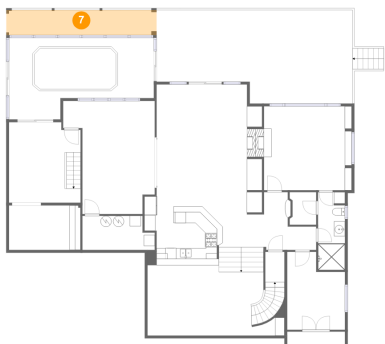
6 Floor 1 - Room



Max Dimensions: 4'10" x 5'11"
Calculated Area: 27 sq. ft
Included: Yes

Heated: Yes
Finished: Yes
Enclosed: Yes
Contiguous: Yes
Permitted: Yes
Wet space: No
Addition: No
Conversion: No

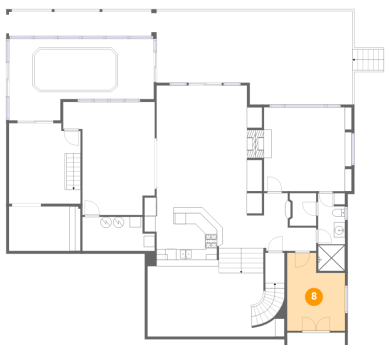
7 Floor 1 - Covered Deck



Max Dimensions: 27'4" x 4'7"
Calculated Area: 125 sq. ft
Included: No

Heated: No
Finished: Yes
Enclosed: No
Contiguous: Yes
Permitted: Yes
Wet space: No
Addition: No
Conversion: No

8 Floor 1 - Bedroom

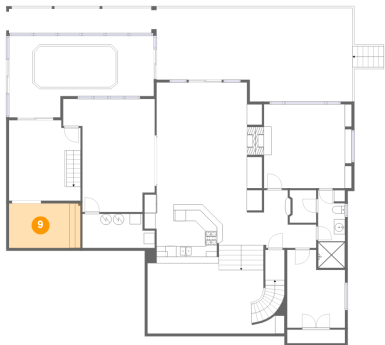


Max Dimensions: 10'6" x 14'2"
Calculated Area: 130 sq. ft
Included: Yes

Heated: Yes
Finished: Yes
Enclosed: Yes
Contiguous: Yes
Permitted: Yes
Wet space: No
Addition: No
Conversion: No

20825 West 94th Terrace, Lenexa, Johnson County, Kansas,
United States, 66220

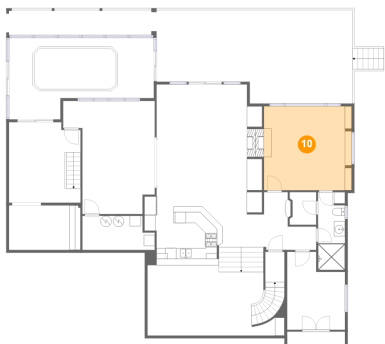
9 Floor 1 - Room



Max Dimensions: 13'0" x 8'1"
Calculated Area: 105 sq. ft
Included: Yes

Heated: Yes
Finished: Yes
Enclosed: Yes
Contiguous: Yes
Permitted: Yes
Wet space: No
Addition: No
Conversion: No

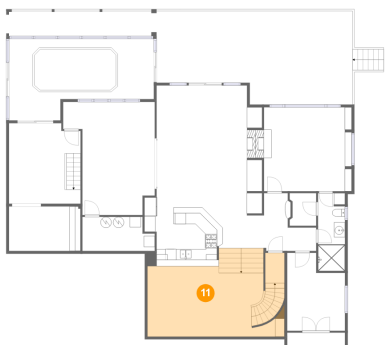
10 Floor 1 - Office



Max Dimensions: 15'11" x 15'3"
Calculated Area: 243 sq. ft
Included: Yes

Heated: Yes
Finished: Yes
Enclosed: Yes
Contiguous: Yes
Permitted: Yes
Wet space: No
Addition: No
Conversion: No

11 Floor 1 - Billiard Room

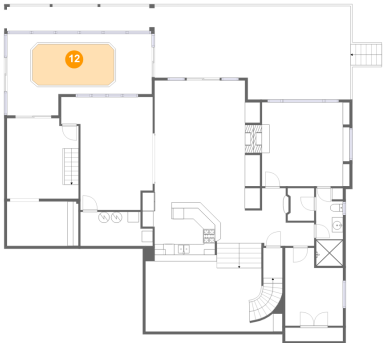


Max Dimensions: 24'11" x 12'9"
Calculated Area: 349 sq. ft
Included: Yes

Heated: Yes
Finished: Yes
Enclosed: Yes
Contiguous: Yes
Permitted: Yes
Wet space: No
Addition: No
Conversion: No

20825 West 94th Terrace, Lenexa, Johnson County, Kansas,
United States, 66220

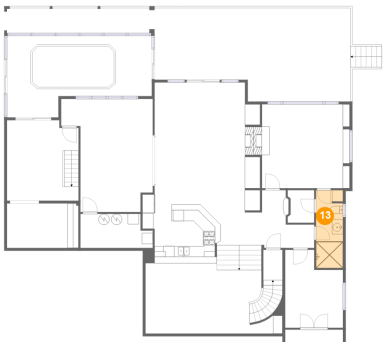
12 Floor 1 - Swimming Pool



Max Dimensions: 14'9" x 7'4"
Calculated Area: 108 sq. ft
Included: No

Heated: No
Finished: No
Enclosed: No
Contiguous: Yes
Permitted: No
Wet space: No
Addition: No
Conversion: No

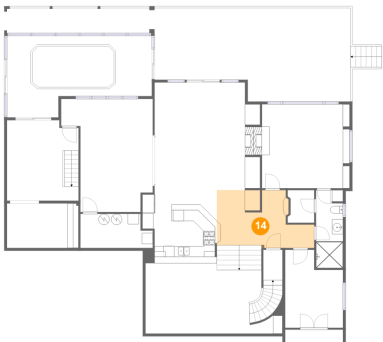
13 Floor 1 - Bath



Max Dimensions: 4'11" x 14'2"
Calculated Area: 69 sq. ft
Included: Yes

Heated: Yes
Finished: Yes
Enclosed: Yes
Contiguous: Yes
Permitted: Yes
Wet space: Yes
Addition: No
Conversion: No

14 Floor 1 - Hall

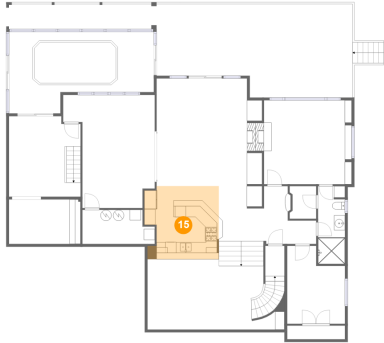


Max Dimensions: 17'9" x 10'6"
Calculated Area: 149 sq. ft
Included: Yes

Heated: Yes
Finished: Yes
Enclosed: Yes
Contiguous: Yes
Permitted: Yes
Wet space: No
Addition: No
Conversion: No

20825 West 94th Terrace, Lenexa, Johnson County, Kansas,
United States, 66220

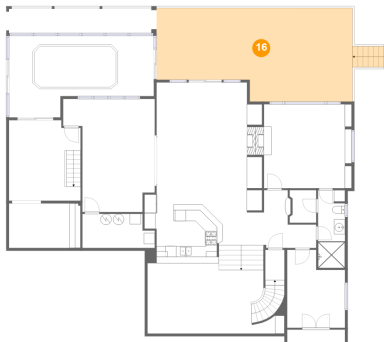
15 Floor 1 - Kitchen



Max Dimensions: 13'6" x 13'3"
Calculated Area: 168 sq. ft
Included: Yes

Heated: Yes
Finished: Yes
Enclosed: Yes
Contiguous: Yes
Permitted: Yes
Wet space: No
Addition: No
Conversion: No

16 Floor 1 - Deck



Max Dimensions: 35'8" x 17'0"
Calculated Area: 560 sq. ft
Included: No

Heated: No
Finished: Yes
Enclosed: No
Contiguous: Yes
Permitted: Yes
Wet space: No
Addition: No
Conversion: No

17 Floor 2 - Kitchen



Max Dimensions: 10'5" x 17'1"
Calculated Area: 178 sq. ft
Included: Yes

Heated: Yes
Finished: Yes
Enclosed: Yes
Contiguous: Yes
Permitted: Yes
Wet space: No
Addition: No
Conversion: No

20825 West 94th Terrace, Lenexa, Johnson County, Kansas,
United States, 66220

18 Floor 2 - Primary Bedroom



Max Dimensions: 17'9" x 17'6"
Calculated Area: 291 sq. ft
Included: Yes

Heated: Yes
Finished: Yes
Enclosed: Yes
Contiguous: Yes
Permitted: Yes
Wet space: No
Addition: No
Conversion: No

19 Floor 2 - Sitting Room



Max Dimensions: 17'6" x 18'0"
Calculated Area: 266 sq. ft
Included: Yes

Heated: Yes
Finished: Yes
Enclosed: Yes
Contiguous: Yes
Permitted: Yes
Wet space: No
Addition: No
Conversion: No

20 Floor 2 - Hall



Max Dimensions: 23'7" x 3'9"
Calculated Area: 88 sq. ft
Included: Yes

Heated: Yes
Finished: Yes
Enclosed: Yes
Contiguous: Yes
Permitted: Yes
Wet space: No
Addition: No
Conversion: No

20825 West 94th Terrace, Lenexa, Johnson County, Kansas,
United States, 66220

21 Floor 2 - WC



Max Dimensions: 6'0" x 5'0"
Calculated Area: 28 sq. ft
Included: Yes

Heated: Yes
Finished: Yes
Enclosed: Yes
Contiguous: Yes
Permitted: Yes
Wet space: Yes
Addition: No
Conversion: No

22 Floor 2 - Foyer



Max Dimensions: 13'2" x 15'6"
Calculated Area: 203 sq. ft
Included: Yes

Heated: Yes
Finished: Yes
Enclosed: Yes
Contiguous: Yes
Permitted: Yes
Wet space: No
Addition: No
Conversion: No

23 Floor 2 - Laundry



Max Dimensions: 10'1" x 5'10"
Calculated Area: 59 sq. ft
Included: Yes

Heated: Yes
Finished: Yes
Enclosed: Yes
Contiguous: Yes
Permitted: Yes
Wet space: No
Addition: No
Conversion: No

20825 West 94th Terrace, Lenexa, Johnson County, Kansas,
United States, 66220

24 Floor 2 - Breakfast Nook



Max Dimensions: 17'6" x 9'1"
Calculated Area: 159 sq. ft
Included: Yes

Heated: Yes
Finished: Yes
Enclosed: Yes
Contiguous: Yes
Permitted: Yes
Wet space: No
Addition: No
Conversion: No

25 Floor 2 - W.I.C.



Max Dimensions: 8'9" x 6'6"
Calculated Area: 54 sq. ft
Included: Yes

Heated: Yes
Finished: Yes
Enclosed: Yes
Contiguous: Yes
Permitted: Yes
Wet space: No
Addition: No
Conversion: No

26 Floor 2 - Screened Porch



Max Dimensions: 27'9" x 19'9"
Calculated Area: 478 sq. ft
Included: No

Heated: No
Finished: Yes
Enclosed: No
Contiguous: Yes
Permitted: Yes
Wet space: No
Addition: No
Conversion: No

20825 West 94th Terrace, Lenexa, Johnson County, Kansas,
United States, 66220

27 Floor 2 - W.I.C.



Max Dimensions: 5'9" x 9'5"
Calculated Area: 54 sq. ft
Included: Yes

Heated: Yes
Finished: Yes
Enclosed: Yes
Contiguous: Yes
Permitted: Yes
Wet space: No
Addition: No
Conversion: No

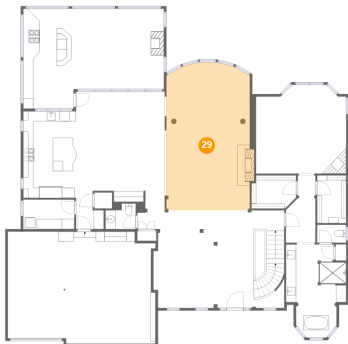
28 Floor 2 - Garage



Max Dimensions: 29'1" x 22'1"
Calculated Area: 614 sq. ft
Included: No

Heated: No
Finished: No
Enclosed: Yes
Contiguous: Yes
Permitted: Yes
Wet space: No
Addition: No
Conversion: No

29 Floor 2 - Living Room



Max Dimensions: 16'5" x 29'2"
Calculated Area: 473 sq. ft
Included: Yes

Heated: Yes
Finished: Yes
Enclosed: Yes
Contiguous: Yes
Permitted: Yes
Wet space: No
Addition: No
Conversion: No

20825 West 94th Terrace, Lenexa, Johnson County, Kansas,
United States, 66220

30 Floor 2 - Primary Bath



Max Dimensions: 11'11" x 18'4"
Calculated Area: 177 sq. ft
Included: Yes

Heated: Yes
Finished: Yes
Enclosed: Yes
Contiguous: Yes
Permitted: Yes
Wet space: Yes
Addition: No
Conversion: No

31 Floor 2 - WC



Max Dimensions: 5'9" x 3'6"
Calculated Area: 20 sq. ft
Included: Yes

Heated: Yes
Finished: Yes
Enclosed: Yes
Contiguous: Yes
Permitted: Yes
Wet space: Yes
Addition: No
Conversion: No

32 Floor 2 - Hall



Max Dimensions: 5'10" x 13'3"
Calculated Area: 64 sq. ft
Included: Yes

Heated: Yes
Finished: Yes
Enclosed: Yes
Contiguous: Yes
Permitted: Yes
Wet space: No
Addition: No
Conversion: No

20825 West 94th Terrace, Lenexa, Johnson County, Kansas,
United States, 66220

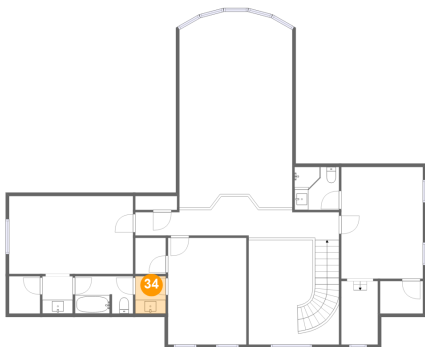
33 Floor 2 - Dining Area



Max Dimensions: 12'8" x 15'6"
Calculated Area: 189 sq. ft
Included: Yes

Heated: Yes
Finished: Yes
Enclosed: Yes
Contiguous: Yes
Permitted: Yes
Wet space: No
Addition: No
Conversion: No

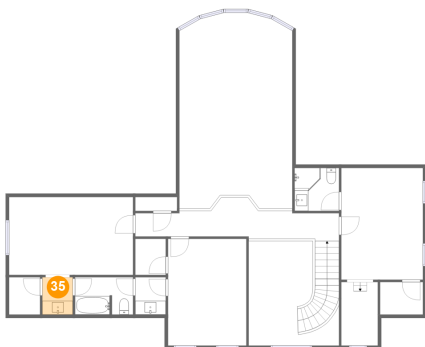
34 Floor 3 - Bath



Max Dimensions: 4'5" x 5'5"
Calculated Area: 24 sq. ft
Included: Yes

Heated: Yes
Finished: Yes
Enclosed: Yes
Contiguous: Yes
Permitted: Yes
Wet space: Yes
Addition: No
Conversion: No

35 Floor 3 - Bath

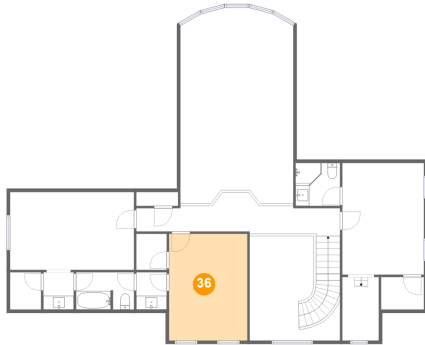


Max Dimensions: 4'5" x 5'5"
Calculated Area: 24 sq. ft
Included: Yes

Heated: Yes
Finished: Yes
Enclosed: Yes
Contiguous: Yes
Permitted: Yes
Wet space: Yes
Addition: No
Conversion: No

20825 West 94th Terrace, Lenexa, Johnson County, Kansas,
United States, 66220

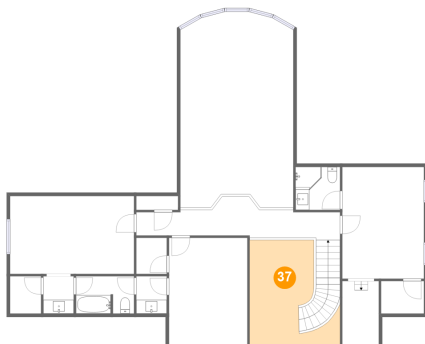
36 Floor 3 - Bedroom



Max Dimensions: 11'5" x 15'6"
Calculated Area: 177 sq. ft
Included: Yes

Heated: Yes
Finished: Yes
Enclosed: Yes
Contiguous: Yes
Permitted: Yes
Wet space: No
Addition: No
Conversion: No

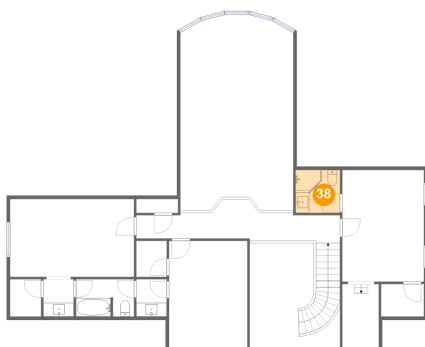
37 Floor 3 - Open To Below



Max Dimensions: 13'2" x 15'3"
Calculated Area: 146 sq. ft
Included: No

Heated: No
Finished: No
Enclosed: No
Contiguous: Yes
Permitted: No
Wet space: No
Addition: No
Conversion: No

38 Floor 3 - Bath

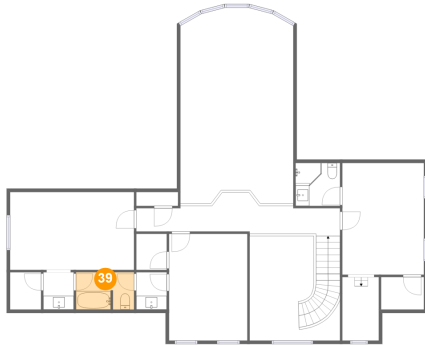


Max Dimensions: 6'6" x 6'3"
Calculated Area: 40 sq. ft
Included: Yes

Heated: Yes
Finished: Yes
Enclosed: Yes
Contiguous: Yes
Permitted: Yes
Wet space: Yes
Addition: No
Conversion: No

20825 West 94th Terrace, Lenexa, Johnson County, Kansas,
United States, 66220

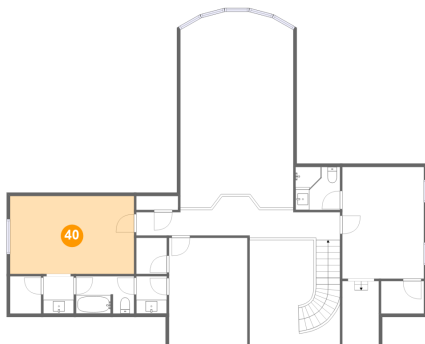
39 Floor 3 - Bath



Max Dimensions: 8'5" x 5'5"
Calculated Area: 45 sq. ft
Included: Yes

Heated: Yes
Finished: Yes
Enclosed: Yes
Contiguous: Yes
Permitted: Yes
Wet space: Yes
Addition: No
Conversion: No

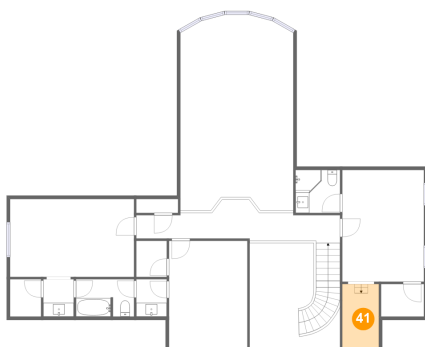
40 Floor 3 - Bedroom



Max Dimensions: 18'1" x 11'4"
Calculated Area: 205 sq. ft
Included: Yes

Heated: Yes
Finished: Yes
Enclosed: Yes
Contiguous: Yes
Permitted: Yes
Wet space: No
Addition: No
Conversion: No

41 Floor 3 - Room

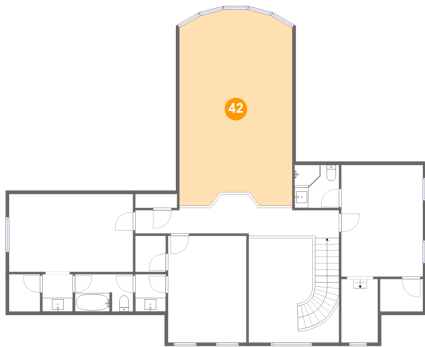


Max Dimensions: 5'4" x 9'3"
Calculated Area: 49 sq. ft
Included: Yes

Heated: Yes
Finished: Yes
Enclosed: Yes
Contiguous: Yes
Permitted: Yes
Wet space: No
Addition: No
Conversion: No

20825 West 94th Terrace, Lenexa, Johnson County, Kansas,
United States, 66220

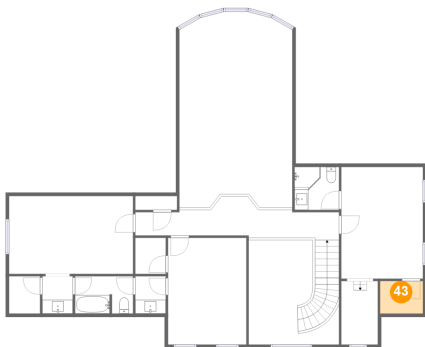
42 Floor 3 - Open To Below



Max Dimensions: 16'5" x 28'0"
Calculated Area: 444 sq. ft
Included: No

Heated: No
Finished: No
Enclosed: No
Contiguous: Yes
Permitted: No
Wet space: No
Addition: No
Conversion: No

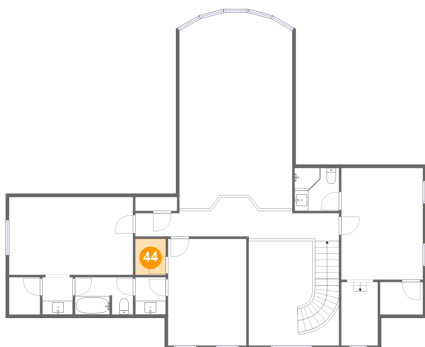
43 Floor 3 - W.I.C.



Max Dimensions: 6'3" x 4'9"
Calculated Area: 30 sq. ft
Included: Yes

Heated: Yes
Finished: Yes
Enclosed: Yes
Contiguous: Yes
Permitted: Yes
Wet space: No
Addition: No
Conversion: No

44 Floor 3 - W.I.C.

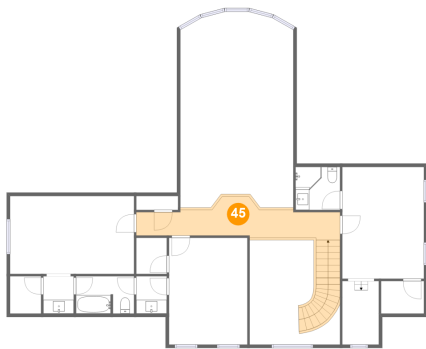


Max Dimensions: 4'5" x 5'3"
Calculated Area: 23 sq. ft
Included: Yes

Heated: Yes
Finished: Yes
Enclosed: Yes
Contiguous: Yes
Permitted: Yes
Wet space: No
Addition: No
Conversion: No

20825 West 94th Terrace, Lenexa, Johnson County, Kansas,
United States, 66220

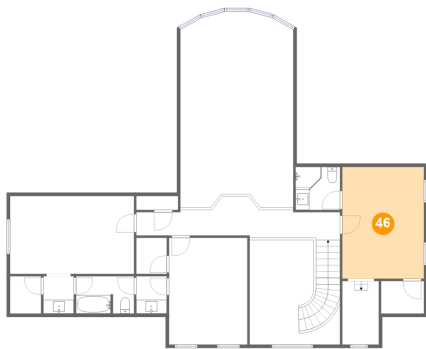
45 Floor 3 - Hall



Max Dimensions: 29'8" x 5'7"
Calculated Area: 186 sq. ft
Included: Yes

Heated: Yes
Finished: Yes
Enclosed: Yes
Contiguous: Yes
Permitted: Yes
Wet space: No
Addition: No
Conversion: No

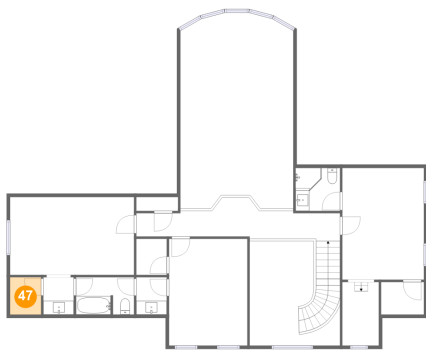
46 Floor 3 - Bedroom



Max Dimensions: 11'11" x 16'3"
Calculated Area: 193 sq. ft
Included: Yes

Heated: Yes
Finished: Yes
Enclosed: Yes
Contiguous: Yes
Permitted: Yes
Wet space: No
Addition: No
Conversion: No

47 Floor 3 - W.I.C.



Max Dimensions: 4'6" x 5'5"
Calculated Area: 25 sq. ft
Included: Yes

Heated: Yes
Finished: Yes
Enclosed: Yes
Contiguous: Yes
Permitted: Yes
Wet space: No
Addition: No
Conversion: No