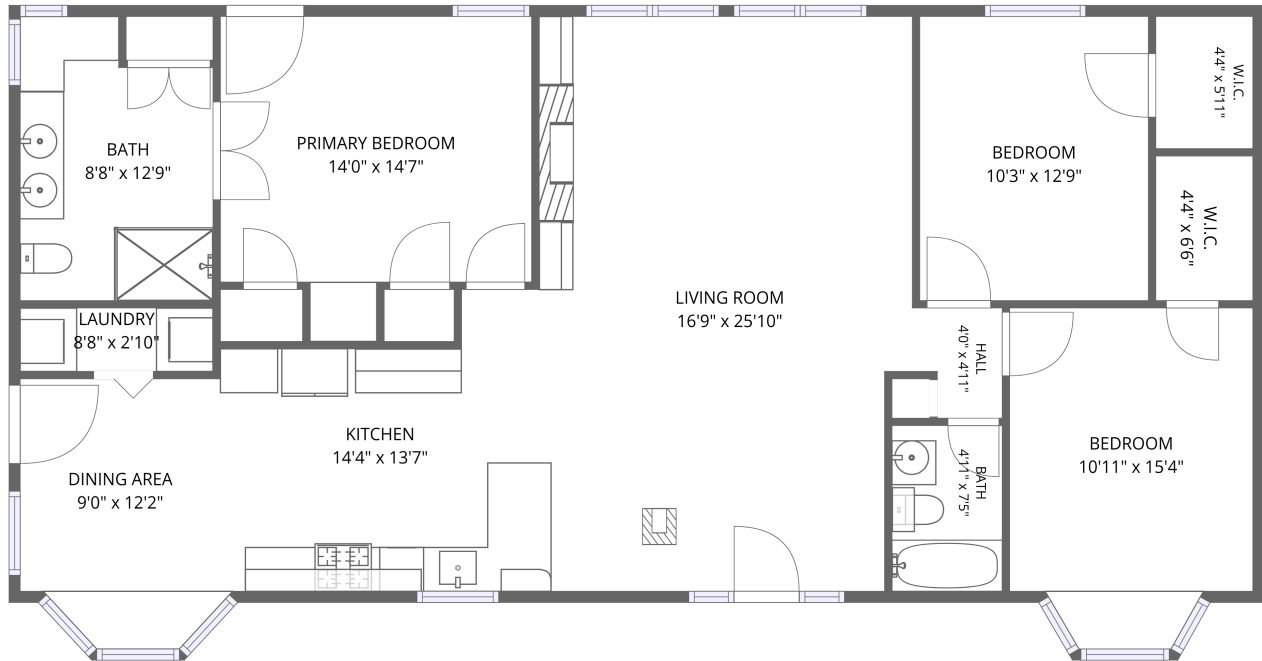


Home data report

12251 US Route 75, Dewey, Washington County, Oklahoma,
United States, 74029



1st floor

Total Area: 1459 sq. ft

1st Floor: 1459 sq. ft

Excluded: Walls: 85 sq. ft

Property summary



1
Floors



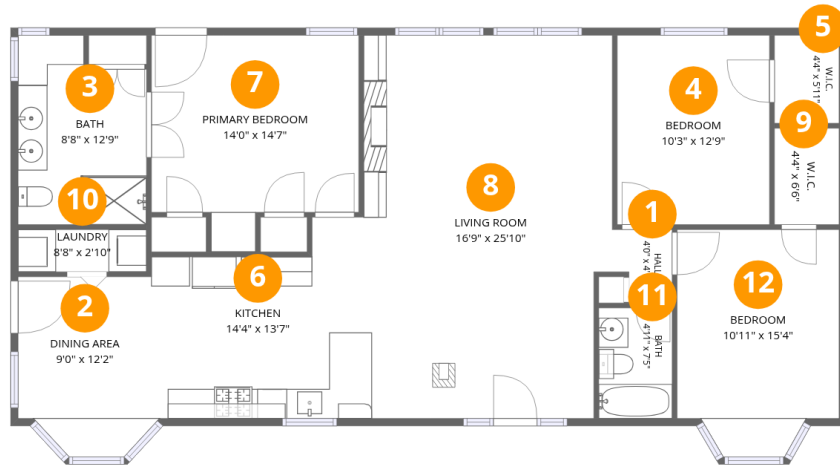
3
Bedrooms



2
Bathrooms

Home data report

12251 US Route 75, Dewey, Washington County, Oklahoma,
United States, 74029



Room dimensions

Floor 1

Total:1459sqft Excluded: 0sqft

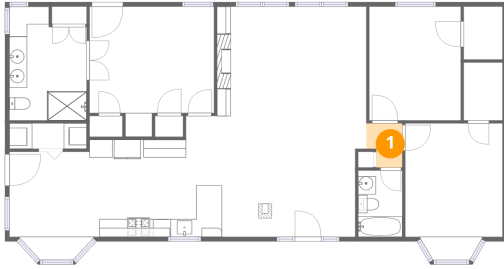
#		Dimensions	sqft	Counted as living area
1	Hall	4'0" x 4'11"	18 sq. ft	Yes
2	Dining Area	9'0" x 12'2"	102 sq. ft	Yes
3	Bath	8'8" x 12'9"	101 sq. ft	Yes
4	Bedroom	10'3" x 12'9"	131 sq. ft	Yes
5	W.I.C.	4'4" x 5'11"	26 sq. ft	Yes
6	Kitchen	14'4" x 13'7"	165 sq. ft	Yes
7	Primary Bedroom	14'0" x 14'7"	175 sq. ft	Yes
8	Living Room	16'9" x 25'10"	420 sq. ft	Yes
9	W.I.C.	4'4" x 6'6"	28 sq. ft	Yes
10	Laundry	8'8" x 2'10"	25 sq. ft	Yes
11	Bath	4'11" x 7'5"	37 sq. ft	Yes

Home data report

**12251 US Route 75, Dewey, Washington County, Oklahoma,
United States, 74029**

#		Dimensions	sqft	Counted as living area
12	Bedroom	10'11" x 15'4"	153 sq. ft	Yes

1 Floor 1 - Hall



Dimensions: 4'0" x 4'11"
Area: 18 sq. ft
Counted as living area: Yes

Heated: Yes
Finished: Yes
Enclosed: Yes
Contiguous: Yes
Permitted: Yes
Wet space: No
Addition: No
Conversion: No

2 Floor 1 - Dining Area



Dimensions: 9'0" x 12'2"
Area: 102 sq. ft
Counted as living area: Yes

Heated: Yes
Finished: Yes
Enclosed: Yes
Contiguous: Yes
Permitted: Yes
Wet space: No
Addition: No
Conversion: No

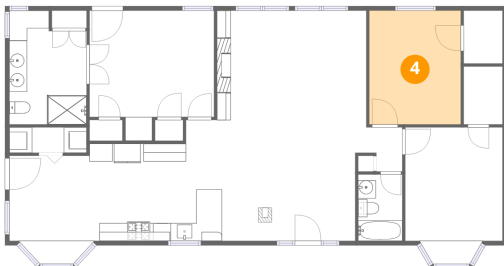
3 Floor 1 - Bath



Dimensions: 8'8" x 12'9"
Area: 101 sq. ft
Counted as living area: Yes

Heated: Yes
Finished: Yes
Enclosed: Yes
Contiguous: Yes
Permitted: Yes
Wet space: Yes
Addition: No
Conversion: No

4 Floor 1 - Bedroom



Dimensions: 10'3" x 12'9"
Area: 131 sq. ft
Counted as living area: Yes

Heated: Yes
Finished: Yes
Enclosed: Yes
Contiguous: Yes
Permitted: Yes
Wet space: No
Addition: No
Conversion: No

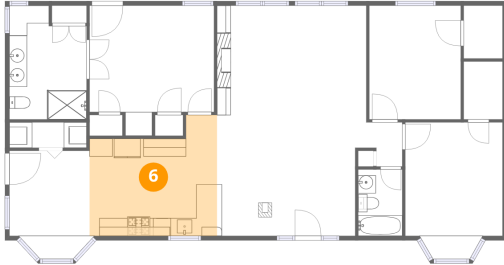
5 Floor 1 - W.I.C.



Dimensions: 4'4" x 5'11"
Area: 26 sq. ft
Counted as living area: Yes

Heated: Yes
Finished: Yes
Enclosed: Yes
Contiguous: Yes
Permitted: Yes
Wet space: No
Addition: No
Conversion: No

6 Floor 1 - Kitchen



Dimensions: 14'4" x 13'7"
Area: 165 sq. ft
Counted as living area: Yes

Heated: Yes
Finished: Yes
Enclosed: Yes
Contiguous: Yes
Permitted: Yes
Wet space: No
Addition: No
Conversion: No

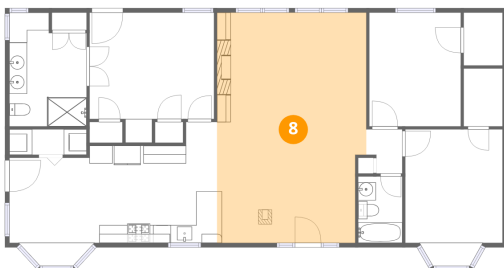
7 Floor 1 - Primary Bedroom



Dimensions: 14'0" x 14'7"
Area: 175 sq. ft
Counted as living area: Yes

Heated: Yes
Finished: Yes
Enclosed: Yes
Contiguous: Yes
Permitted: Yes
Wet space: No
Addition: No
Conversion: No

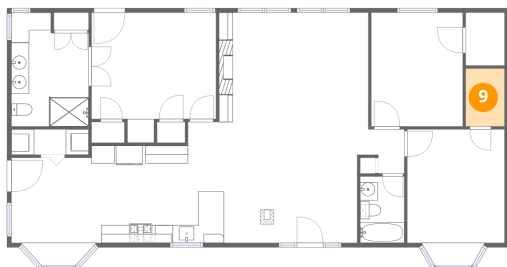
8 Floor 1 - Living Room



Dimensions: 16'9" x 25'10"
Area: 420 sq. ft
Counted as living area: Yes

Heated: Yes
Finished: Yes
Enclosed: Yes
Contiguous: Yes
Permitted: Yes
Wet space: No
Addition: No
Conversion: No

9 Floor 1 - W.I.C.



Dimensions: 4'4" x 6'6"
Area: 28 sq. ft
Counted as living area: Yes

Heated: Yes
Finished: Yes
Enclosed: Yes
Contiguous: Yes
Permitted: Yes
Wet space: No
Addition: No
Conversion: No

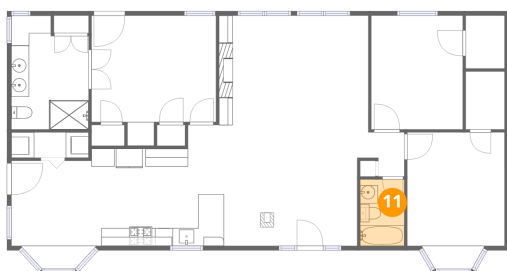
10 Floor 1 - Laundry



Dimensions: 8'8" x 2'10"
Area: 25 sq. ft
Counted as living area: Yes

Heated: Yes
Finished: Yes
Enclosed: Yes
Contiguous: Yes
Permitted: Yes
Wet space: No
Addition: No
Conversion: No

11 Floor 1 - Bath



Dimensions: 4'11" x 7'5"
Area: 37 sq. ft
Counted as living area: Yes

Heated: Yes
Finished: Yes
Enclosed: Yes
Contiguous: Yes
Permitted: Yes
Wet space: Yes
Addition: No
Conversion: No

Home data report

12251 US Route 75, Dewey, Washington County, Oklahoma,
United States, 74029

12 Floor 1 - Bedroom



Dimensions: 10'11" x 15'4"
Area: 153 sq. ft
Counted as living area: Yes

Heated: Yes
Finished: Yes
Enclosed: Yes
Contiguous: Yes
Permitted: Yes
Wet space: No
Addition: No
Conversion: No