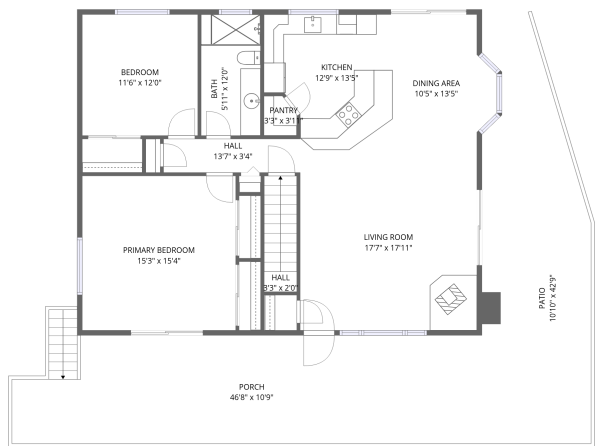
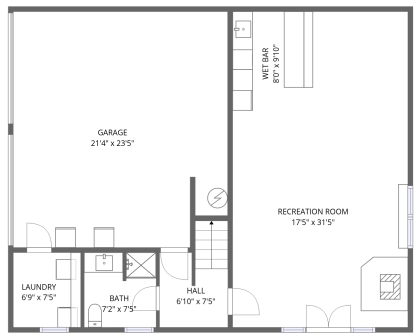


Home data report

3116 Wards Creek Rd,Rogue River,OR,US



FLOOR 2



FLOOR 1

Total Area: 1960 sq. ft
Floor 1: 718 sq. ft, Floor 2: 1242 sq. ft
Excluded: Garage 486 sq. ft, Porch 493 sq. ft, Patio 387 sq. ft, Walls: 171 sq. ft

Property summary

 **2** Floors

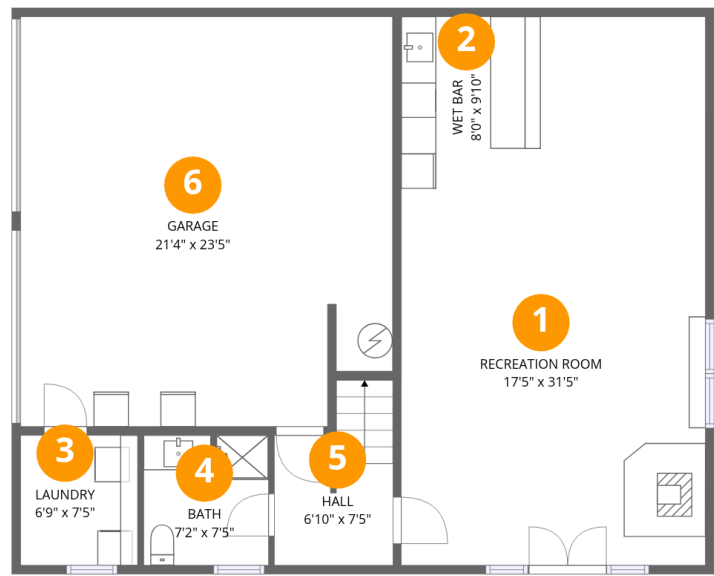
 **2** Bedrooms

 **2** Bathrooms

 **1** Garages

Home data report

3116 Wards Creek Rd,Rogue River,OR,US



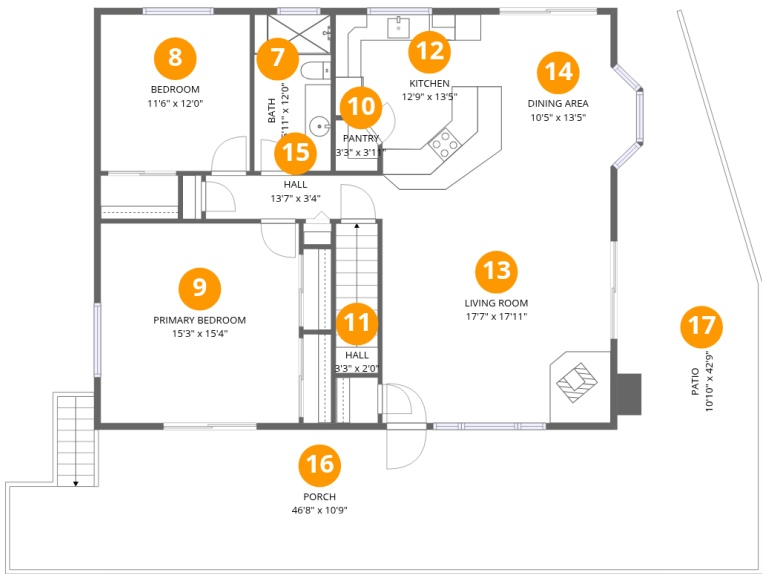
Room dimensions

Floor 1 Total:718sqft Excluded: 486sqft

#		Dimensions	sqft	Counted as living area
1	Recreation Room	17'5" x 31'5"	468 sq. ft	Yes
2	Wet Bar	8'0" x 9'10"	78 sq. ft	Yes
3	Laundry	6'9" x 7'5"	50 sq. ft	Yes
4	Bath	7'2" x 7'5"	52 sq. ft	Yes
5	Hall	6'10" x 7'5"	60 sq. ft	Yes
6	Garage	21'4" x 23'5"	486 sq. ft	No

Home data report

3116 Wards Creek Rd,Rogue River,OR,US

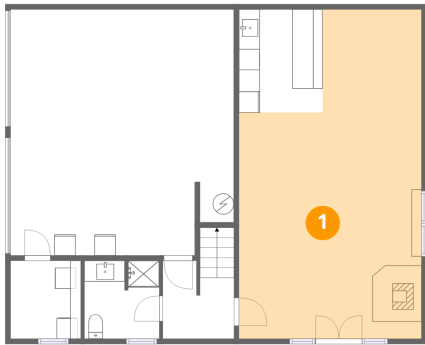


Room dimensions

Floor 2 Total:1242sqft Excluded: 880sqft

#		Dimensions	sqft	Counted as living area
7	Bath	5'11" x 12'0"	71 sq. ft	Yes
8	Bedroom	11'6" x 12'0"	138 sq. ft	Yes
9	Primary Bedroom	15'3" x 15'4"	234 sq. ft	Yes
10	Pantry	3'3" x 3'11"	12 sq. ft	Yes
11	Hall	3'3" x 2'0"	37 sq. ft	Yes
12	Kitchen	12'9" x 13'5"	146 sq. ft	Yes
13	Living Room	17'7" x 17'11"	315 sq. ft	Yes
14	Dining Area	10'5" x 13'5"	131 sq. ft	Yes
15	Hall	13'7" x 3'4"	45 sq. ft	Yes
16	Porch	46'8" x 10'9"	493 sq. ft	No
17	Patio	10'10" x 42'9"	387 sq. ft	No

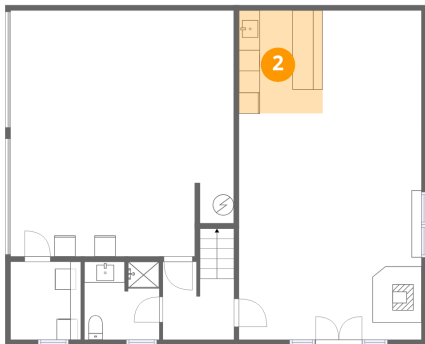
1 Floor 1 - Recreation Room



Dimensions: 17'5" x 31'5"
Area: 468 sq. ft
Counted as living area: Yes

Heated: Yes
Finished: Yes
Enclosed: Yes
Contiguous: Yes
Permitted: Yes
Wet space: No
Addition: No
Conversion: No

2 Floor 1 - Wet Bar



Dimensions: 8'0" x 9'10"
Area: 78 sq. ft
Counted as living area: Yes

Heated: Yes
Finished: Yes
Enclosed: Yes
Contiguous: Yes
Permitted: Yes
Wet space: No
Addition: No
Conversion: No

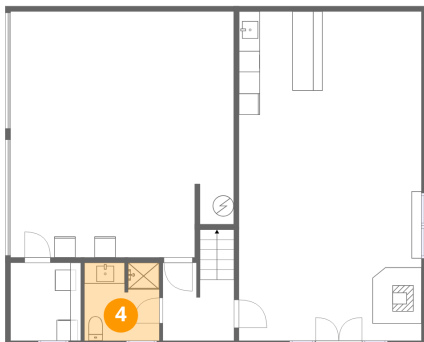
3 Floor 1 - Laundry



Dimensions: 6'9" x 7'5"
Area: 50 sq. ft
Counted as living area: Yes

Heated: Yes
Finished: Yes
Enclosed: Yes
Contiguous: Yes
Permitted: Yes
Wet space: No
Addition: No
Conversion: No

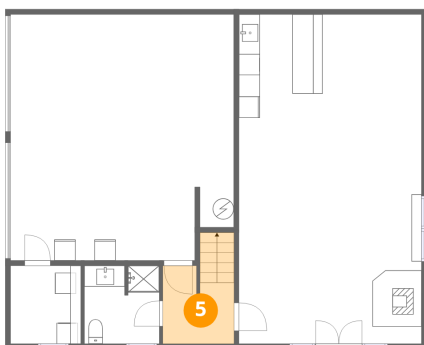
4 Floor 1 - Bath



Dimensions: 7'2" x 7'5"
Area: 52 sq. ft
Counted as living area: Yes

Heated: Yes
Finished: Yes
Enclosed: Yes
Contiguous: Yes
Permitted: Yes
Wet space: Yes
Addition: No
Conversion: No

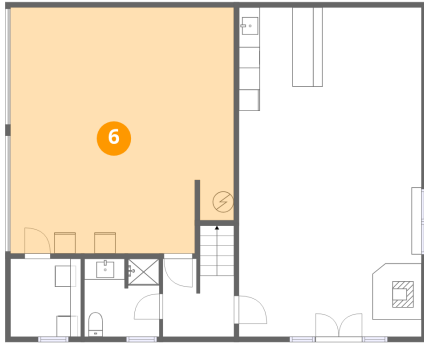
5 Floor 1 - Hall



Dimensions: 6'10" x 7'5"
Area: 60 sq. ft
Counted as living area: Yes

Heated: Yes
Finished: Yes
Enclosed: Yes
Contiguous: Yes
Permitted: Yes
Wet space: No
Addition: No
Conversion: No

6 Floor 1 - Garage



Dimensions: 21'4" x 23'5"
Area: 486 sq. ft
Counted as living area: No

Heated: No
Finished: No
Enclosed: Yes
Contiguous: Yes
Permitted: Yes
Wet space: No
Addition: No
Conversion: No

7 Floor 2 - Bath



Dimensions: 5'11" x 12'0"
Area: 71 sq. ft
Counted as living area: Yes

Heated: Yes
Finished: Yes
Enclosed: Yes
Contiguous: Yes
Permitted: Yes
Wet space: Yes
Addition: No
Conversion: No

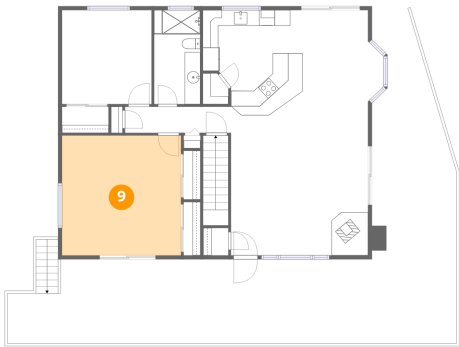
8 Floor 2 - Bedroom



Dimensions: 11'6" x 12'0"
Area: 138 sq. ft
Counted as living area: Yes

Heated: Yes
Finished: Yes
Enclosed: Yes
Contiguous: Yes
Permitted: Yes
Wet space: No
Addition: No
Conversion: No

9 Floor 2 - Primary Bedroom



Dimensions: 15'3" x 15'4"
Area: 234 sq. ft
Counted as living area: Yes

Heated: Yes
Finished: Yes
Enclosed: Yes
Contiguous: Yes
Permitted: Yes
Wet space: No
Addition: No
Conversion: No

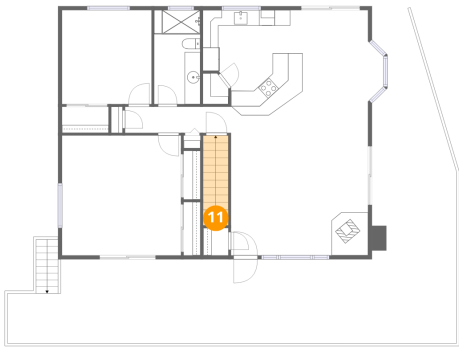
10 Floor 2 - Pantry



Dimensions: 3'3" x 3'11"
Area: 12 sq. ft
Counted as living area: Yes

Heated: Yes
Finished: Yes
Enclosed: Yes
Contiguous: Yes
Permitted: Yes
Wet space: No
Addition: No
Conversion: No

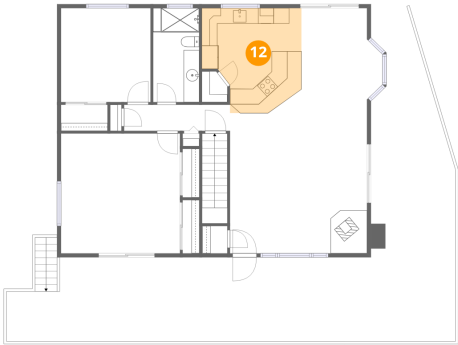
11 Floor 2 - Hall



Dimensions: 3'3" x 2'0"
Area: 37 sq. ft
Counted as living area: Yes

Heated: Yes
Finished: Yes
Enclosed: Yes
Contiguous: Yes
Permitted: Yes
Wet space: No
Addition: No
Conversion: No

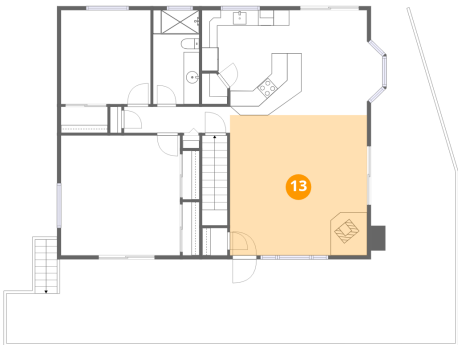
12 Floor 2 - Kitchen



Dimensions: 12'9" x 13'5"
Area: 146 sq. ft
Counted as living area: Yes

Heated: Yes
Finished: Yes
Enclosed: Yes
Contiguous: Yes
Permitted: Yes
Wet space: No
Addition: No
Conversion: No

13 Floor 2 - Living Room



Dimensions: 17'7" x 17'11"
Area: 315 sq. ft
Counted as living area: Yes

Heated: Yes
Finished: Yes
Enclosed: Yes
Contiguous: Yes
Permitted: Yes
Wet space: No
Addition: No
Conversion: No

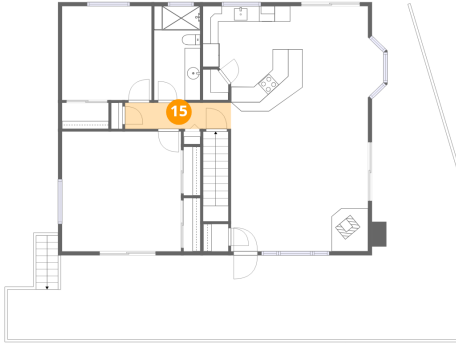
14 Floor 2 - Dining Area



Dimensions: 10'5" x 13'5"
Area: 131 sq. ft
Counted as living area: Yes

Heated: Yes
Finished: Yes
Enclosed: Yes
Contiguous: Yes
Permitted: Yes
Wet space: No
Addition: No
Conversion: No

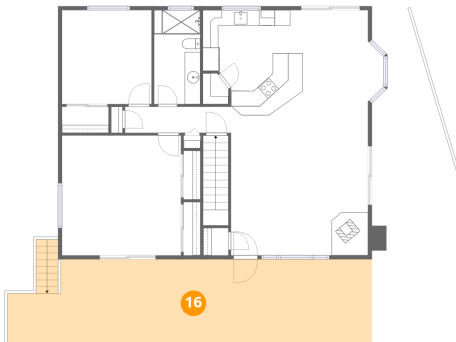
15 Floor 2 - Hall



Dimensions: 13'7" x 3'4"
Area: 45 sq. ft
Counted as living area: Yes

Heated: Yes
Finished: Yes
Enclosed: Yes
Contiguous: Yes
Permitted: Yes
Wet space: No
Addition: No
Conversion: No

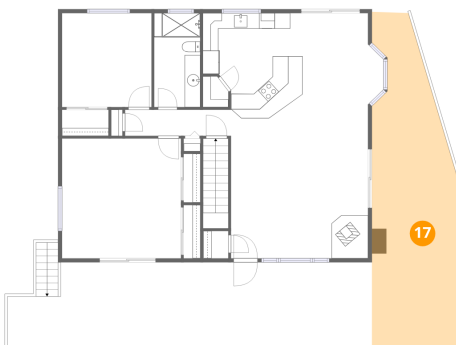
16 Floor 2 - Porch



Dimensions: 46'8" x 10'9"
Area: 493 sq. ft
Counted as living area: No

Heated: No
Finished: No
Enclosed: No
Contiguous: Yes
Permitted: Yes
Wet space: No
Addition: No
Conversion: No

17 Floor 2 - Patio



Dimensions: 10'10" x 42'9"
Area: 387 sq. ft
Counted as living area: No

Heated: No
Finished: No
Enclosed: No
Contiguous: Yes
Permitted: Yes
Wet space: No
Addition: No
Conversion: No