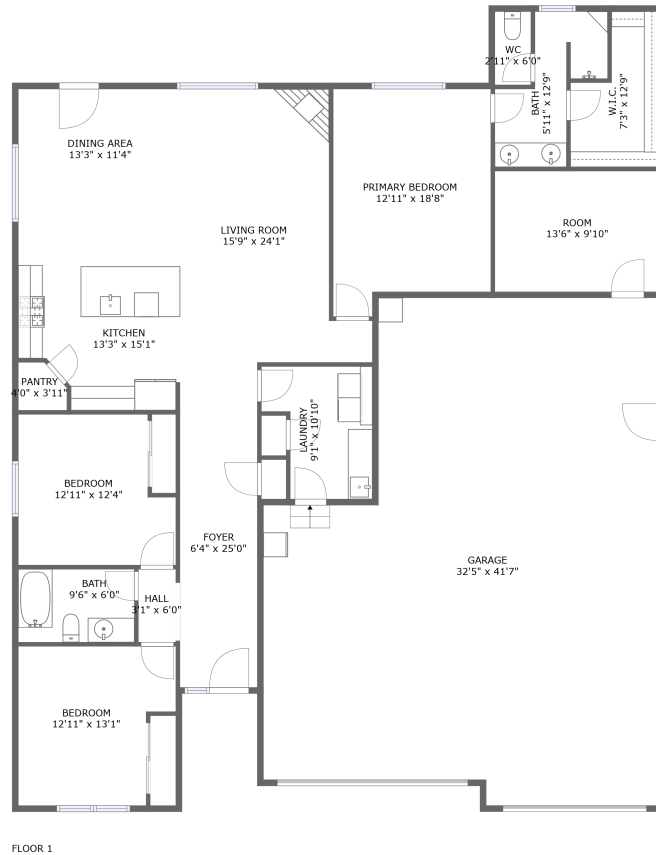


1922 Silverstone Drive, Roy, Forest Grove, Washington County, Oregon, United States,

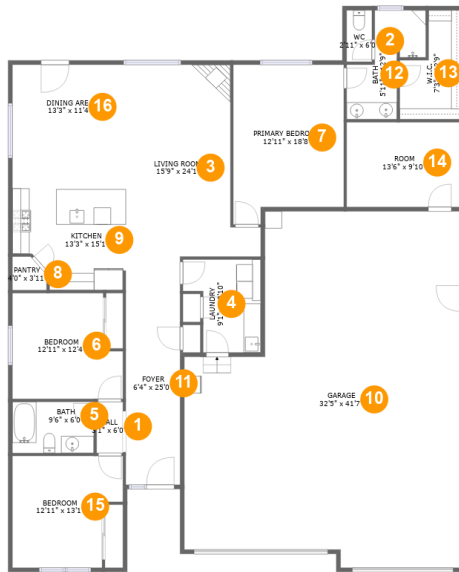


Property Summary

 **1** garages  **3** bedrooms  **2** bathrooms  **0** half baths

 **1** floors  **1,853** Gross Living Area sqft  **3,192** total sqft

1922 Silverstone Drive, Roy, Forest Grove, Washington County, Oregon, United States,



Room Dimensions

Floor 1

Total sqft: 3192

Living area: 1853

#	Room name	Dimensions	Area (sqft)	Counted as Living Area
1	Hall	3'1" x 6'0"	18 sq. ft	Yes
2	Wc	2'11" x 6'0"	18 sq. ft	Yes
3	Living Room	15'9" x 24'1"	297 sq. ft	Yes
4	Laundry	9'1" x 10'10"	82 sq. ft	Yes
5	Bath	9'6" x 6'0"	57 sq. ft	Yes
6	Bedroom	12'11" x 12'4"	144 sq. ft	Yes
7	Primary Bedroom	12'11" x 18'8"	221 sq. ft	Yes
8	Pantry	4'0" x 3'11"	14 sq. ft	Yes
9	Kitchen	13'3" x 15'1"	182 sq. ft	Yes
10	Garage	32'5" x 41'7"	1152 sq. ft	No
11	Foyer	6'4" x 25'0"	159 sq. ft	Yes

Scan captured on Tue, 22 Oct 2024 18:28:31 GMT

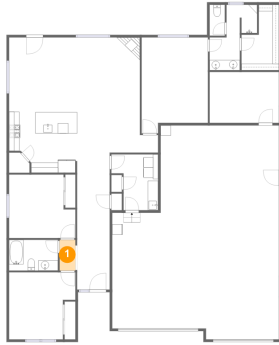
Information is calculated by CubiCasa technology; deemed highly reliable but not guaranteed.

**1922 Silverstone Drive, Roy, Forest Grove,
Washington County, Oregon, United States,**

#	Room name	Dimensions	Area (sqft)	Counted as Living Area
12	Bath	5'11" x 12'9"	71 sq. ft	Yes
13	W.i.c.	7'3" x 12'9"	73 sq. ft	Yes
14	Room	13'6" x 9'10"	134 sq. ft	No
15	Bedroom	12'11" x 13'1"	150 sq. ft	Yes
16	Dining Area	13'3" x 11'4"	150 sq. ft	Yes

1922 Silverstone Drive, Roy, Forest Grove, Washington County, Oregon, United States,

1 Floor 1 - Hall



Dimensions: 3'1" x 6'0"
Area: 18 sq. ft
Counted as Living Area:
Yes

Heated: Yes
Finished: Yes
Enclosed: Yes
Contiguous:
Yes
Permitted: Yes
Wet Space: No
Addition: No
Conversion: No

2 Floor 1 - Wc

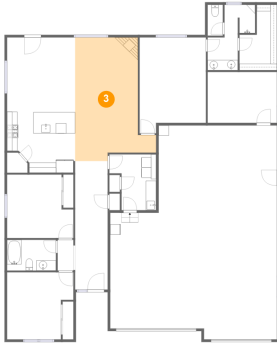


Dimensions: 2'11" x 6'0"
Area: 18 sq. ft
Counted as Living Area:
Yes

Heated: Yes
Finished: Yes
Enclosed: Yes
Contiguous:
Yes
Permitted: Yes
Wet Space: Yes
Addition: No
Conversion: No

1922 Silverstone Drive, Roy, Forest Grove, Washington County, Oregon, United States,

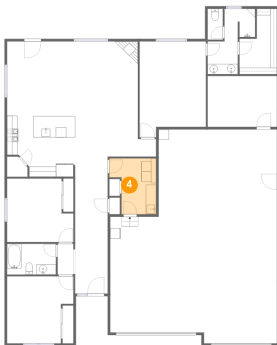
3 Floor 1 - Living Room



Dimensions: 15'9" x 24'1"
Area: 297 sq. ft
Counted as Living Area:
Yes

Heated: Yes
Finished: Yes
Enclosed: Yes
Contiguous:
Yes
Permitted: Yes
Wet Space: No
Addition: No
Conversion: No

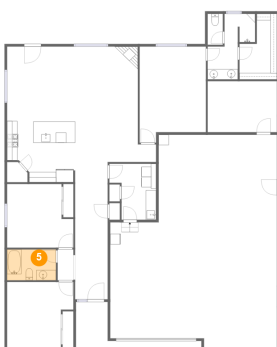
4 Floor 1 - Laundry



Dimensions: 9'1" x 10'10"
Area: 82 sq. ft
Counted as Living Area:
Yes

Heated: Yes
Finished: Yes
Enclosed: Yes
Contiguous:
Yes
Permitted: Yes
Wet Space: No
Addition: No
Conversion: No

5 Floor 1 - Bath

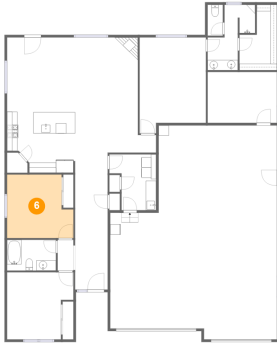


Dimensions: 9'6" x 6'0"
Area: 57 sq. ft
Counted as Living Area:
Yes

Heated: Yes
Finished: Yes
Enclosed: Yes
Contiguous:
Yes
Permitted: Yes
Wet Space: Yes
Addition: No
Conversion: No

1922 Silverstone Drive, Roy, Forest Grove, Washington County, Oregon, United States,

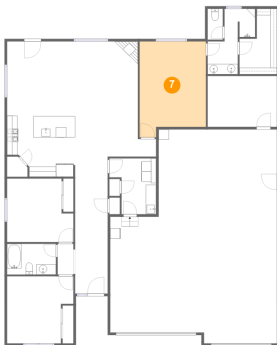
6 Floor 1 - Bedroom



Dimensions: 12'11" x 12'4"
Area: 144 sq. ft
Counted as Living Area:
Yes

Heated: Yes
Finished: Yes
Enclosed: Yes
Contiguous:
Yes
Permitted: Yes
Wet Space: No
Addition: No
Conversion: No

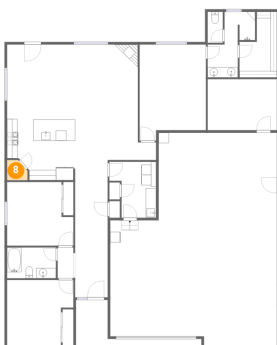
7 Floor 1 - Primary Bedroom



Dimensions: 12'11" x 18'8"
Area: 221 sq. ft
Counted as Living Area:
Yes

Heated: Yes
Finished: Yes
Enclosed: Yes
Contiguous:
Yes
Permitted: Yes
Wet Space: No
Addition: No
Conversion: No

8 Floor 1 - Pantry

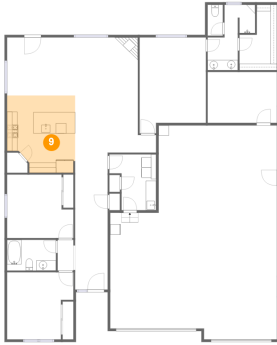


Dimensions: 4'0" x 3'11"
Area: 14 sq. ft
Counted as Living Area:
Yes

Heated: Yes
Finished: Yes
Enclosed: Yes
Contiguous:
Yes
Permitted: Yes
Wet Space: No
Addition: No
Conversion: No

**1922 Silverstone Drive, Roy, Forest Grove,
Washington County, Oregon, United States,**

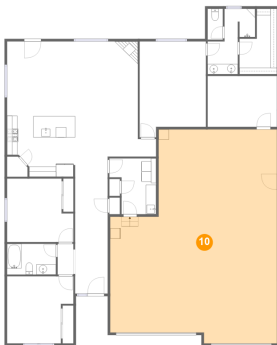
9 Floor 1 - Kitchen



Dimensions: 13'3" x 15'1"
Area: 182 sq. ft
Counted as Living Area:
Yes

Heated: Yes
Finished: Yes
Enclosed: Yes
Contiguous:
Yes
Permitted: Yes
Wet Space: No
Addition: No
Conversion: No

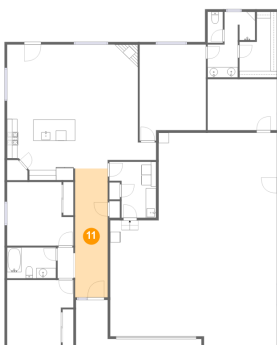
10 Floor 1 - Garage



Dimensions: 32'5" x 41'7"
Area: 1152 sq. ft
Counted as Living Area: No

Heated: No
Finished: No
Enclosed: Yes
Contiguous: Yes
Permitted: Yes
Wet Space: No
Addition: No
Conversion: No

11 Floor 1 - Foyer

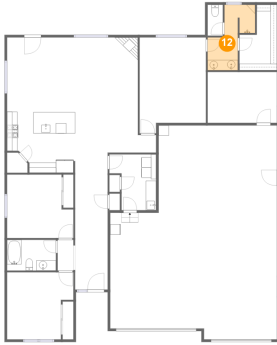


Dimensions: 6'4" x 25'0"
Area: 159 sq. ft
Counted as Living Area:
Yes

Heated: Yes
Finished: Yes
Enclosed: Yes
Contiguous:
Yes
Permitted: Yes
Wet Space: No
Addition: No
Conversion: No

1922 Silverstone Drive, Roy, Forest Grove, Washington County, Oregon, United States,

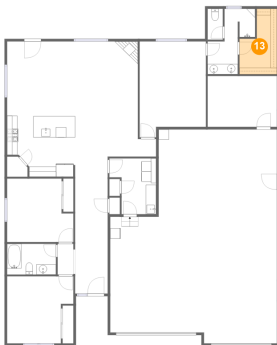
12 Floor 1 - Bath



Dimensions: 5'11" x 12'9"
Area: 71 sq. ft
Counted as Living Area:
Yes

Heated: Yes
Finished: Yes
Enclosed: Yes
Contiguous:
Yes
Permitted: Yes
Wet Space: Yes
Addition: No
Conversion: No

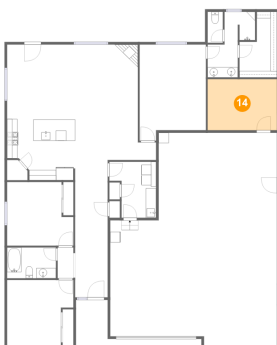
13 Floor 1 - W.i.c.



Dimensions: 7'3" x 12'9"
Area: 73 sq. ft
Counted as Living Area:
Yes

Heated: Yes
Finished: Yes
Enclosed: Yes
Contiguous:
Yes
Permitted: Yes
Wet Space: No
Addition: No
Conversion: No

14 Floor 1 - Room

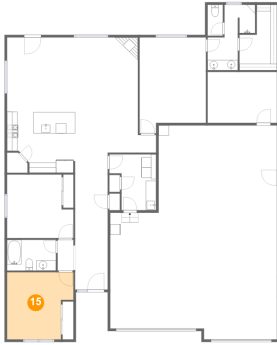


Dimensions: 13'6" x 9'10"
Area: 134 sq. ft
Counted as Living Area: No

Heated: Yes
Finished: Yes
Enclosed: Yes
Contiguous: No
Permitted: Yes
Wet Space: No
Addition: No
Conversion: No

**1922 Silverstone Drive, Roy, Forest Grove,
Washington County, Oregon, United States,**

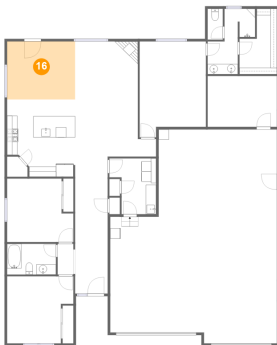
15 Floor 1 - Bedroom



Dimensions: 12'11" x 13'1"
Area: 150 sq. ft
Counted as Living Area:
Yes

Heated: Yes
Finished: Yes
Enclosed: Yes
Contiguous:
Yes
Permitted: Yes
Wet Space: No
Addition: No
Conversion: No

16 Floor 1 - Dining Area



Dimensions: 13'3" x 11'4"
Area: 150 sq. ft
Counted as Living Area:
Yes

Heated: Yes
Finished: Yes
Enclosed: Yes
Contiguous:
Yes
Permitted: Yes
Wet Space: No
Addition: No
Conversion: No