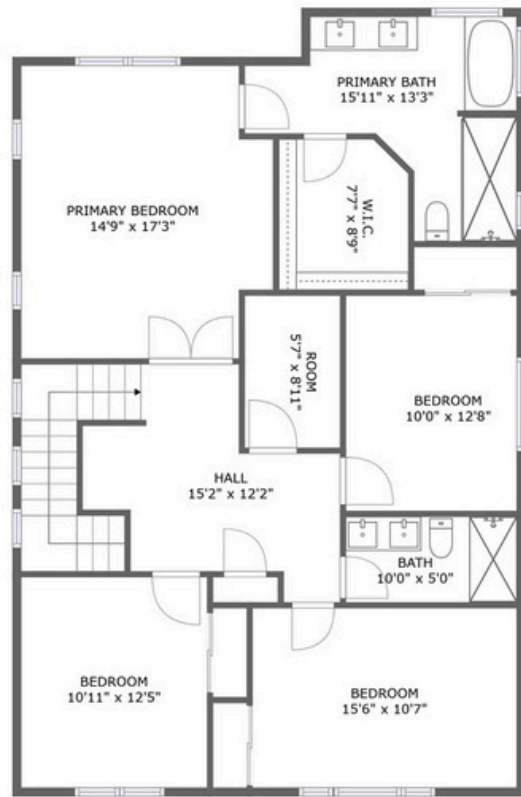


# 4501 146th Street Southeast, Silver Firs, Bothell, Snohomish County, Washington, United States,




FLOOR 1





FLOOR 2

## Property Summary


 2 garages

 4 bedrooms

 2 bathrooms

 1 half baths

 2 floors

 2,172 Gross Living Area sqft

 2,185 total sqft

# 4501 146th Street Southeast, Silver Firs, Bothell, Snohomish County, Washington, United States,



## Room Dimensions

### Floor 1

**Total sqft: 839**
**Living area: 826**

#	Room name	Dimensions	Area (sqft)	Counted as Living Area
1	Foyer	5'3" x 15'7"	143 sq. ft	Yes
2	Sitting Room	11'8" x 8'11"	104 sq. ft	Yes
3	Living Room	12'0" x 13'1"	168 sq. ft	Yes
4	Wc	5'3" x 6'8"	36 sq. ft	Yes
5	Kitchen	9'1" x 16'10"	142 sq. ft	Yes
6	Dining Area	7'11" x 18'9"	141 sq. ft	Yes

# 4501 146th Street Southeast, Silver Firs, Bothell, Snohomish County, Washington, United States,



## Room Dimensions

Floor 2

Total sqft: 1346

Living area: 1346

#	Room name	Dimensions	Area (sqft)	Counted as Living Area
7	Room	5'7" x 8'11"	50 sq. ft	Yes
8	W.i.c.	7'7" x 8'9"	65 sq. ft	Yes
9	Primary Bedroom	14'9" x 17'3"	238 sq. ft	Yes
10	Bedroom	10'0" x 12'8"	127 sq. ft	Yes
11	Primary Bath	15'11" x 13'3"	138 sq. ft	Yes
12	Hall	15'2" x 12'2"	198 sq. ft	Yes
13	Bedroom	10'11" x 12'5"	135 sq. ft	Yes
14	Bedroom	15'6" x 10'7"	164 sq. ft	Yes
15	Bath	10'0" x 5'0"	51 sq. ft	Yes

# 4501 146th Street Southeast, Silver Firs, Bothell, Snohomish County, Washington, United States,

## 1 Floor 1 - Foyer



Dimensions: 5'3" x 15'7"  
Area: 143 sq. ft  
Counted as Living Area:  
Yes

Heated: Yes  
Finished: Yes  
Enclosed: Yes  
Contiguous:  
Yes Permitted:  
Yes Wet Space:  
**Addition:**  
No Conversion:  
No

## 2 Floor 1 - Sitting Room



Dimensions: 11'8" x 8'11"  
Area: 104 sq. ft  
Counted as Living Area:  
Yes

Heated: Yes  
Finished: Yes  
Enclosed: Yes  
Contiguous:  
Yes Permitted:  
Yes Wet Space:  
**Addition:**  
No Conversion:  
No

# 4501 146th Street Southeast, Silver Firs, Bothell, Snohomish County, Washington, United States,

## 3 Floor 1 - Living Room



Dimensions: 12'0" x 13'1"  
Area: 168 sq. ft  
Counted as Living Area:  
Yes

Heated: Yes  
Finished: Yes  
Enclosed: Yes  
Contiguous:  
Yes Permitted:  
Yes Wet Space:  
Addition:  
No Conversion:  
No

## 4 Floor 1 - Wc



Dimensions: 5'3" x 6'8"  
Area: 36 sq. ft  
Counted as Living Area:  
Yes

Heated: Yes  
Finished: Yes  
Enclosed: Yes  
Contiguous:  
Yes  
Permitted: Yes  
Wet Space: Yes  
Addition: No  
Conversion: No

## 5 Floor 1 - Kitchen



Dimensions: 9'1" x 16'10"  
Area: 142 sq. ft  
Counted as Living Area:  
Yes

Heated: Yes  
Finished: Yes  
Enclosed: Yes  
Contiguous:  
Yes Permitted:  
Yes Wet Space:  
Addition:  
No Conversion:  
No

# 4501 146th Street Southeast, Silver Firs, Bothell, Snohomish County, Washington, United States,

## 6 Floor 1 - Dining Area



Dimensions: 7'11" x 18'9"  
 Area: 141 sq. ft  
 Counted as Living Area:  
 Yes

Heated: Yes  
 Finished: Yes  
 Enclosed: Yes  
 Contiguous:  
 Yes Permitted:  
 Yes Wet Space:  
 Addition:  
 No Conversion:  
 No

## 7 Floor 2 - Room



Dimensions: 5'7" x 8'11"  
 Area: 50 sq. ft  
 Counted as Living Area:  
 Yes

Heated: Yes  
 Finished: Yes  
 Enclosed: Yes  
 Contiguous:  
 Yes Permitted:  
 Yes Wet Space:  
 Addition:  
 No Conversion:  
 No

## 8 Floor 2 - W.i.c.



Dimensions: 7'7" x 8'9"  
 Area: 65 sq. ft  
 Counted as Living Area:  
 Yes

Heated: Yes  
 Finished: Yes  
 Enclosed: Yes  
 Contiguous:  
 Yes Permitted:  
 Yes Wet Space:  
 Addition:  
 No Conversion:  
 No

# 4501 146th Street Southeast, Silver Firs, Bothell, Snohomish County, Washington, United States,

## 9 Floor 2 - Primary Bedroom



Dimensions: 14'9" x 17'3"  
Area: 238 sq. ft  
Counted as Living Area:  
Yes

Heated: Yes  
Finished: Yes  
Enclosed: Yes  
Contiguous:  
Yes Permitted:  
Yes Wet Space:  
Addition:  
No Conversion:  
No

## 10 Floor 2 - Bedroom



Dimensions: 10'0" x 12'8"  
Area: 127 sq. ft  
Counted as Living Area:  
Yes

Heated: Yes  
Finished: Yes  
Enclosed: Yes  
Contiguous:  
Yes Permitted:  
Yes Wet Space:  
Addition:  
No Conversion:  
No

## 11 Floor 2 - Primary Bath



Dimensions: 15'11" x 13'3"  
Area: 138 sq. ft  
Counted as Living Area:  
Yes

Heated: Yes  
Finished: Yes  
Enclosed: Yes  
Contiguous:  
Yes  
Permitted: Yes  
Wet Space: Yes  
Addition: No  
Conversion: No

# 4501 146th Street Southeast, Silver Firs, Bothell, Snohomish County, Washington, United States,

## 12 Floor 2 - Hall



Dimensions: 15'2" x 12'2"  
Area: 198 sq. ft  
Counted as Living Area:  
Yes

Heated: Yes  
Finished: Yes  
Enclosed: Yes  
Contiguous:  
Yes Permitted:  
Yes Wet Space:  
**Addition:**  
No Conversion:  
No

## 13 Floor 2 - Bedroom



Dimensions: 10'11" x 12'5"  
Area: 135 sq. ft  
Counted as Living Area:  
Yes

Heated: Yes  
Finished: Yes  
Enclosed: Yes  
Contiguous:  
Yes Permitted:  
Yes Wet Space:  
**Addition:**  
No Conversion:  
No

## 14 Floor 2 - Bedroom



Dimensions: 15'6" x 10'7"  
Area: 164 sq. ft  
Counted as Living Area:  
Yes

Heated: Yes  
Finished: Yes  
Enclosed: Yes  
Contiguous:  
Yes Permitted:  
Yes Wet Space:  
**Addition:**  
No Conversion:  
No



# 4501 146th Street Southeast, Silver Firs, Bothell, Snohomish County, Washington, United States,

## 15 Floor 2 - Bath



Dimensions: 10'0" x 5'0"  
Area: 51 sq. ft  
Counted as Living Area:  
Yes

Heated: Yes  
Finished: Yes  
Enclosed: Yes  
Contiguous:  
Yes  
Permitted: Yes  
Wet Space: Yes  
Addition: No  
Conversion: No