



Home report


1815 35th Avenue, Roy, Forest Grove, Washington County,
Oregon, United States, 97116





Property summary


 **1** Garages


 **4** Bedrooms

 **2** Bathrooms

 **1** Half baths

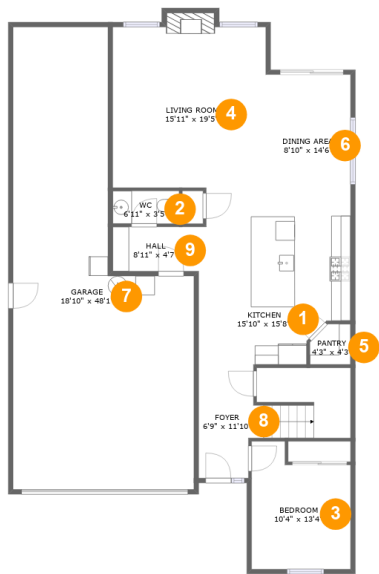
 **2** Floors

 **2,603** Gross living area sqft

 **3,325** Total sqft

Home report

1815 35th Avenue, Roy, Forest Grove, Washington County,
Oregon, United States, 97116



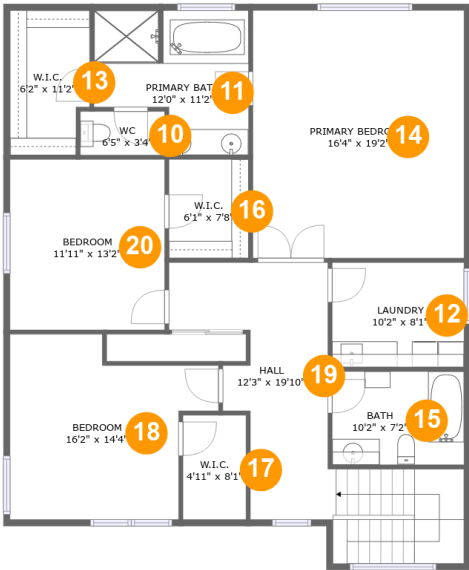
Room dimensions

Floor 1 Total sqft: 1828 Living area: 1106

#		Dimensions	sqft	Counted as living area
1	Kitchen	15'10" x 15'8"	229 sq. ft	Yes
2	WC	6'11" x 3'5"	24 sq. ft	Yes
3	Bedroom	10'4" x 13'4"	120 sq. ft	Yes
4	Living Room	15'11" x 19'5"	291 sq. ft	Yes
5	Pantry	4'3" x 4'3"	16 sq. ft	Yes
6	Dining Area	8'10" x 14'6"	128 sq. ft	Yes
7	Garage	18'10" x 48'1"	674 sq. ft	No
8	Foyer	6'9" x 11'10"	136 sq. ft	Yes
9	Hall	8'11" x 4'7"	41 sq. ft	Yes

Home report

1815 35th Avenue, Roy, Forest Grove, Washington County,
Oregon, United States, 97116

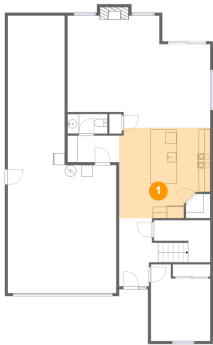


Room dimensions

Floor 2 Total sqft: 1497 Living area: 1497

#		Dimensions	sqft	Counted as living area
10	WC	6'5" x 3'4"	22 sq. ft	Yes
11	Primary Bath	12'0" x 11'2"	111 sq. ft	Yes
12	Laundry	10'2" x 8'1"	83 sq. ft	Yes
13	W.I.C.	6'2" x 11'2"	65 sq. ft	Yes
14	Primary Bedroom	16'4" x 19'2"	313 sq. ft	Yes
15	Bath	10'2" x 7'2"	74 sq. ft	Yes
16	W.I.C.	6'1" x 7'8"	47 sq. ft	Yes
17	W.I.C.	4'11" x 8'1"	39 sq. ft	Yes
18	Bedroom	16'2" x 14'4"	184 sq. ft	Yes
19	Hall	12'3" x 19'10"	235 sq. ft	Yes
20	Bedroom	11'11" x 13'2"	158 sq. ft	Yes

1 Floor 1 - Kitchen



Dimensions: 15'10" x 15'8"
Area: 229 sq. ft
Counted as living area: Yes

Heated: Yes
Finished: Yes
Enclosed: Yes
Contiguous: Yes
Permitted: Yes
Wet space: No
Addition: No
Conversion: No

2 Floor 1 - WC



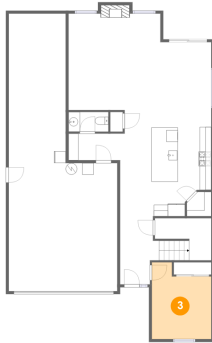
Dimensions: 6'11" x 3'5"
Area: 24 sq. ft
Counted as living area: Yes

Heated: Yes
Finished: Yes
Enclosed: Yes
Contiguous: Yes
Permitted: Yes
Wet space: Yes
Addition: No
Conversion: No

Home report

1815 35th Avenue, Roy, Forest Grove, Washington County,
Oregon, United States, 97116

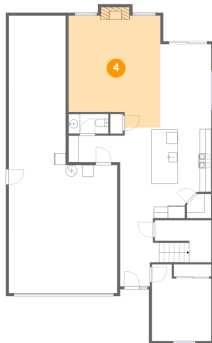
3 Floor 1 - Bedroom



Dimensions: 10'4" x 13'4"
Area: 120 sq. ft
Counted as living area: Yes

Heated: Yes
Finished: Yes
Enclosed: Yes
Contiguous: Yes
Permitted: Yes
Wet space: No
Addition: No
Conversion: No

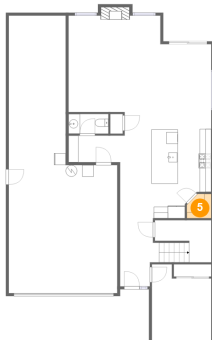
4 Floor 1 - Living Room



Dimensions: 15'11" x 19'5"
Area: 291 sq. ft
Counted as living area: Yes

Heated: Yes
Finished: Yes
Enclosed: Yes
Contiguous: Yes
Permitted: Yes
Wet space: No
Addition: No
Conversion: No

5 Floor 1 - Pantry

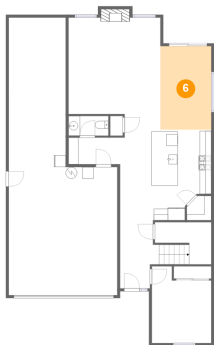


Dimensions: 4'3" x 4'3"
Area: 16 sq. ft
Counted as living area: Yes

Heated: Yes
Finished: Yes
Enclosed: Yes
Contiguous: Yes
Permitted: Yes
Wet space: No
Addition: No
Conversion: No

1815 35th Avenue, Roy, Forest Grove, Washington County,
Oregon, United States, 97116

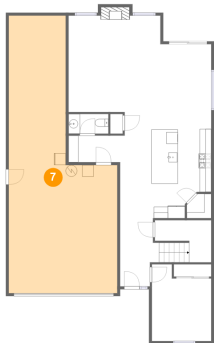
6 Floor 1 - Dining Area



Dimensions: 8'10" x 14'6"
Area: 128 sq. ft
Counted as living area: Yes

Heated: Yes
Finished: Yes
Enclosed: Yes
Contiguous: Yes
Permitted: Yes
Wet space: No
Addition: No
Conversion: No

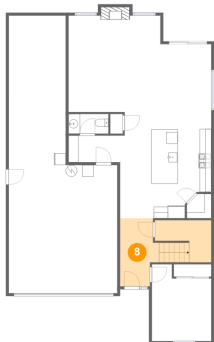
7 Floor 1 - Garage



Dimensions: 18'10" x 48'1"
Area: 674 sq. ft
Counted as living area: No

Heated: No
Finished: No
Enclosed: Yes
Contiguous: Yes
Permitted: Yes
Wet space: No
Addition: No
Conversion: No

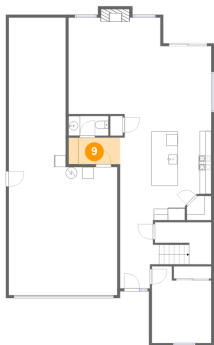
8 Floor 1 - Foyer



Dimensions: 6'9" x 11'10"
Area: 136 sq. ft
Counted as living area: Yes

Heated: Yes
Finished: Yes
Enclosed: Yes
Contiguous: Yes
Permitted: Yes
Wet space: No
Addition: No
Conversion: No

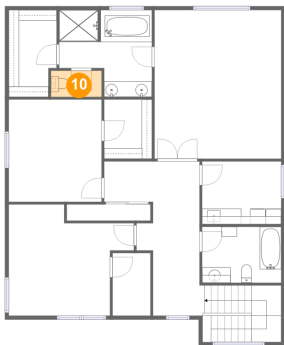
9 Floor 1 - Hall



Dimensions: 8'11" x 4'7"
Area: 41 sq. ft
Counted as living area: Yes

Heated: Yes
Finished: Yes
Enclosed: Yes
Contiguous: Yes
Permitted: Yes
Wet space: No
Addition: No
Conversion: No

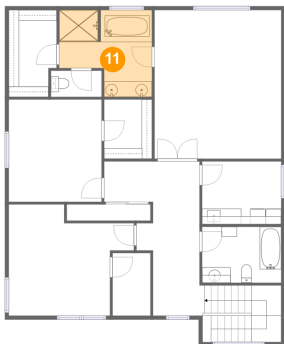
10 Floor 2 - WC



Dimensions: 6'5" x 3'4"
Area: 22 sq. ft
Counted as living area: Yes

Heated: Yes
Finished: Yes
Enclosed: Yes
Contiguous: Yes
Permitted: Yes
Wet space: Yes
Addition: No
Conversion: No

11 Floor 2 - Primary Bath



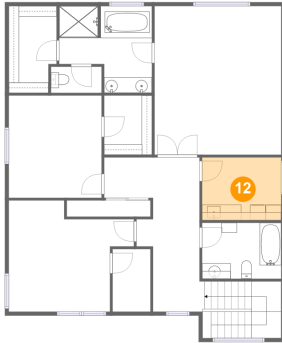
Dimensions: 12'0" x 11'2"
Area: 111 sq. ft
Counted as living area: Yes

Heated: Yes
Finished: Yes
Enclosed: Yes
Contiguous: Yes
Permitted: Yes
Wet space: Yes
Addition: No
Conversion: No

Home report

1815 35th Avenue, Roy, Forest Grove, Washington County,
Oregon, United States, 97116

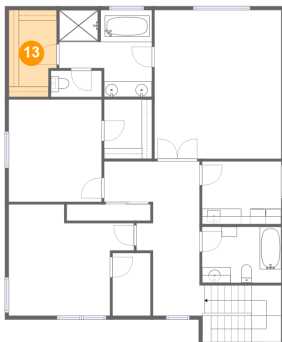
12 Floor 2 - Laundry



Dimensions: 10'2" x 8'1"
Area: 83 sq. ft
Counted as living area: Yes

Heated: Yes
Finished: Yes
Enclosed: Yes
Contiguous: Yes
Permitted: Yes
Wet space: No
Addition: No
Conversion: No

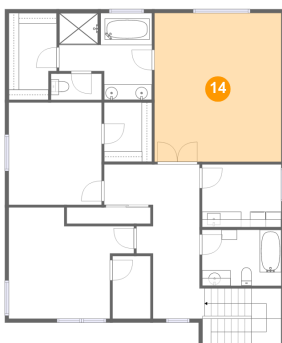
13 Floor 2 - W.I.C.



Dimensions: 6'2" x 11'2"
Area: 65 sq. ft
Counted as living area: Yes

Heated: Yes
Finished: Yes
Enclosed: Yes
Contiguous: Yes
Permitted: Yes
Wet space: No
Addition: No
Conversion: No

14 Floor 2 - Primary Bedroom



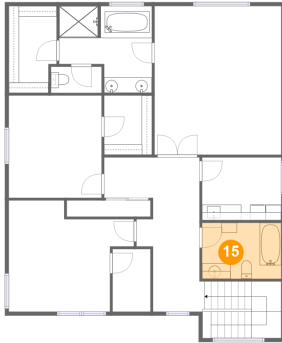
Dimensions: 16'4" x 19'2"
Area: 313 sq. ft
Counted as living area: Yes

Heated: Yes
Finished: Yes
Enclosed: Yes
Contiguous: Yes
Permitted: Yes
Wet space: No
Addition: No
Conversion: No

Home report

1815 35th Avenue, Roy, Forest Grove, Washington County,
Oregon, United States, 97116

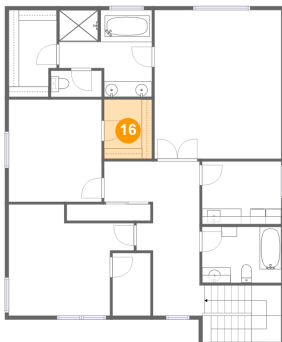
15 Floor 2 - Bath



Dimensions: 10'2" x 7'2"
Area: 74 sq. ft
Counted as living area: Yes

Heated: Yes
Finished: Yes
Enclosed: Yes
Contiguous: Yes
Permitted: Yes
Wet space: Yes
Addition: No
Conversion: No

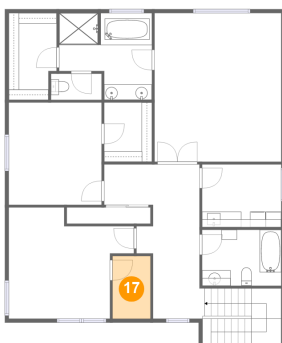
16 Floor 2 - W.I.C.



Dimensions: 6'1" x 7'8"
Area: 47 sq. ft
Counted as living area: Yes

Heated: Yes
Finished: Yes
Enclosed: Yes
Contiguous: Yes
Permitted: Yes
Wet space: No
Addition: No
Conversion: No

17 Floor 2 - W.I.C.



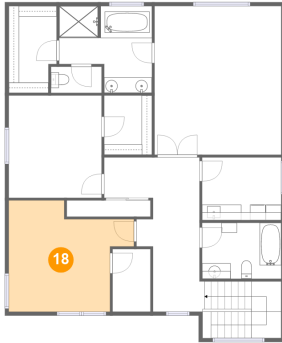
Dimensions: 4'11" x 8'1"
Area: 39 sq. ft
Counted as living area: Yes

Heated: Yes
Finished: Yes
Enclosed: Yes
Contiguous: Yes
Permitted: Yes
Wet space: No
Addition: No
Conversion: No

Home report

1815 35th Avenue, Roy, Forest Grove, Washington County,
Oregon, United States, 97116

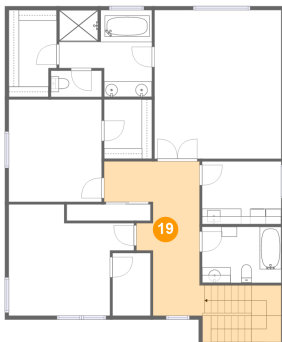
18 Floor 2 - Bedroom



Dimensions: 16'2" x 14'4"
Area: 184 sq. ft
Counted as living area: Yes

Heated: Yes
Finished: Yes
Enclosed: Yes
Contiguous: Yes
Permitted: Yes
Wet space: No
Addition: No
Conversion: No

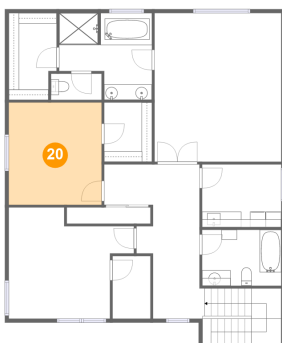
19 Floor 2 - Hall



Dimensions: 12'3" x 19'10"
Area: 235 sq. ft
Counted as living area: Yes

Heated: Yes
Finished: Yes
Enclosed: Yes
Contiguous: Yes
Permitted: Yes
Wet space: No
Addition: No
Conversion: No

20 Floor 2 - Bedroom



Dimensions: 11'11" x 13'2"
Area: 158 sq. ft
Counted as living area: Yes

Heated: Yes
Finished: Yes
Enclosed: Yes
Contiguous: Yes
Permitted: Yes
Wet space: No
Addition: No
Conversion: No