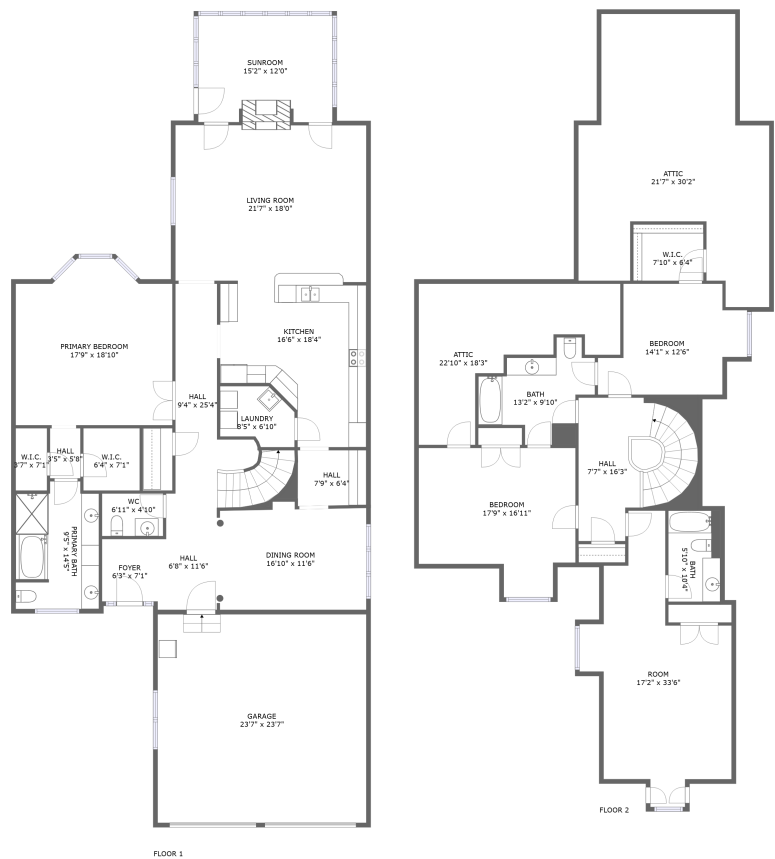


Home report

20 Creswell Court, Greensboro, Guilford County, North Carolina,
United States, 27407



Total GLA: 3510 sq. ft
Floor 1: 2158 sq. ft, Floor 2: 1352 sq. ft
Excluded: Garage 592 sq. ft, Low ceiling 384 sq. ft, Attic 454 sq. ft

Property summary

**2** Floors

**3** Bedrooms

**3** Bathrooms

Home report

**20 Creswell Court, Greensboro, Guilford County, North Carolina,
United States, 27407**



1
Half baths



1
Garages

Home report

20 Creswell Court, Greensboro, Guilford County, North Carolina,
United States, 27407



Room dimensions

Floor 1 Total:2158sqft Excluded: 592sqft

#		Max Dimensions	sqft	Included
1	Sunroom	15'2" x 12'0"	173 sq. ft	Yes
2	Garage	23'7" x 23'7"	556 sq. ft	No
3	Hall	6'8" x 11'6"	74 sq. ft	Yes
4	W.I.C.	3'7" x 7'1"	25 sq. ft	Yes
5	Hall	9'4" x 25'4"	176 sq. ft	Yes
6	Primary Bath	9'5" x 14'5"	127 sq. ft	Yes
7	Foyer	6'3" x 7'1"	44 sq. ft	Yes
8	WC	6'11" x 4'10"	33 sq. ft	Yes
9	Hall	3'5" x 5'8"	20 sq. ft	Yes
10	Hall	7'9" x 6'4"	52 sq. ft	Yes
11	Laundry	8'5" x 6'10"	49 sq. ft	Yes

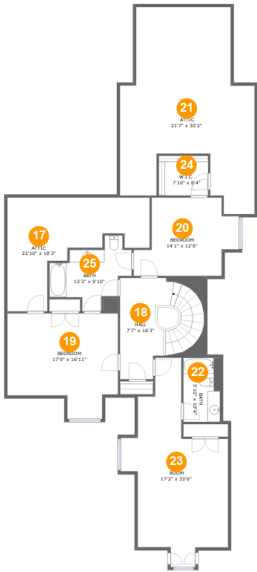
Home report

**20 Creswell Court, Greensboro, Guilford County, North Carolina,
United States, 27407**

#		Max Dimensions	sqft	Included
12	Kitchen	16'6" x 18'4"	245 sq. ft	Yes
13	W.I.C.	6'4" x 7'1"	45 sq. ft	Yes
14	Primary Bedroom	17'9" x 18'10"	303 sq. ft	Yes
15	Living Room	21'7" x 18'0"	396 sq. ft	Yes
16	Dining Room	16'10" x 11'6"	194 sq. ft	Yes

Home report

20 Creswell Court, Greensboro, Guilford County, North Carolina,
United States, 27407



Room dimensions

Floor 2 Total:1352sqft Excluded: 838sqft

#		Max Dimensions	sqft	Included
17	Attic	22'10" x 18'3"	174 sq. ft	No
18	Hall	7'7" x 16'3"	178 sq. ft	Yes
19	Bedroom	17'9" x 16'11"	253 sq. ft	Yes
20	Bedroom	14'1" x 12'6"	167 sq. ft	Yes
21	Attic	21'7" x 30'2"	269 sq. ft	No
22	Bath	5'10" x 10'4"	60 sq. ft	Yes
23	Room	17'2" x 33'6"	352 sq. ft	Yes
24	W.I.C.	7'10" x 6'4"	51 sq. ft	Yes
25	Bath	13'2" x 9'10"	99 sq. ft	Yes

1 Floor 1 - Sunroom



Max Dimensions: 15'2" x 12'0"
Calculated Area: 173 sq. ft
Included: Yes

Heated: Yes
Finished: Yes
Enclosed: Yes
Contiguous: Yes
Permitted: Yes
Wet space: No
Addition: No
Conversion: No

2 Floor 1 - Garage



Max Dimensions: 23'7" x 23'7"
Calculated Area: 556 sq. ft
Included: No

Heated: No
Finished: Yes
Enclosed: Yes
Contiguous: Yes
Permitted: Yes
Wet space: No
Addition: No
Conversion: No

3 Floor 1 - Hall



Max Dimensions: 6'8" x 11'6"
Calculated Area: 74 sq. ft
Included: Yes

Heated: Yes
Finished: Yes
Enclosed: Yes
Contiguous: Yes
Permitted: Yes
Wet space: No
Addition: No
Conversion: No

4 Floor 1 - W.I.C.



Max Dimensions: 3'7" x 7'1"
Calculated Area: 25 sq. ft
Included: Yes

Heated: Yes
Finished: Yes
Enclosed: Yes
Contiguous: Yes
Permitted: Yes
Wet space: No
Addition: No
Conversion: No

5 Floor 1 - Hall



Max Dimensions: 9'4" x 25'4"
Calculated Area: 176 sq. ft
Included: Yes

Heated: Yes
Finished: Yes
Enclosed: Yes
Contiguous: Yes
Permitted: Yes
Wet space: No
Addition: No
Conversion: No

6 Floor 1 - Primary Bath



Max Dimensions: 9'5" x 14'5"
Calculated Area: 127 sq. ft
Included: Yes

Heated: Yes
Finished: Yes
Enclosed: Yes
Contiguous: Yes
Permitted: Yes
Wet space: Yes
Addition: No
Conversion: No

7 Floor 1 - Foyer



Max Dimensions: 6'3" x 7'1"
Calculated Area: 44 sq. ft
Included: Yes

Heated: Yes
Finished: Yes
Enclosed: Yes
Contiguous: Yes
Permitted: Yes
Wet space: No
Addition: No
Conversion: No

8 Floor 1 - WC



Max Dimensions: 6'11" x 4'10"
Calculated Area: 33 sq. ft
Included: Yes

Heated: Yes
Finished: Yes
Enclosed: Yes
Contiguous: Yes
Permitted: Yes
Wet space: Yes
Addition: No
Conversion: No

20 Creswell Court, Greensboro, Guilford County, North Carolina,
United States, 27407

9 Floor 1 - Hall



Max Dimensions: 3'5" x 5'8"
Calculated Area: 20 sq. ft
Included: Yes

Heated: Yes
Finished: Yes
Enclosed: Yes
Contiguous: Yes
Permitted: Yes
Wet space: No
Addition: No
Conversion: No

10 Floor 1 - Hall



Max Dimensions: 7'9" x 6'4"
Calculated Area: 52 sq. ft
Included: Yes

Heated: Yes
Finished: Yes
Enclosed: Yes
Contiguous: Yes
Permitted: Yes
Wet space: No
Addition: No
Conversion: No

11 Floor 1 - Laundry



Max Dimensions: 8'5" x
6'10"
Calculated Area: 49 sq. ft
Included: Yes

Heated: Yes
Finished: Yes
Enclosed: Yes
Contiguous:
Yes
Permitted: Yes
Wet space: No
Addition: No
Conversion: No

20 Creswell Court, Greensboro, Guilford County, North Carolina,
United States, 27407

12 Floor 1 - Kitchen



Max Dimensions: 16'6" x 18'4"
Calculated Area: 245 sq. ft
Included: Yes

Heated: Yes
Finished: Yes
Enclosed: Yes
Contiguous: Yes
Permitted: Yes
Wet space: No
Addition: No
Conversion: No

13 Floor 1 - W.I.C.



Max Dimensions: 6'4" x 7'1"
Calculated Area: 45 sq. ft
Included: Yes

Heated: Yes
Finished: Yes
Enclosed: Yes
Contiguous: Yes
Permitted: Yes
Wet space: No
Addition: No
Conversion: No

14 Floor 1 - Primary Bedroom



Max Dimensions: 17'9" x 18'10"
Calculated Area: 303 sq. ft
Included: Yes

Heated: Yes
Finished: Yes
Enclosed: Yes
Contiguous: Yes
Permitted: Yes
Wet space: No
Addition: No
Conversion: No

15 Floor 1 - Living Room



Max Dimensions: 21'7" x 18'0"
Calculated Area: 396 sq. ft
Included: Yes

Heated: Yes
Finished: Yes
Enclosed: Yes
Contiguous: Yes
Permitted: Yes
Wet space: No
Addition: No
Conversion: No

16 Floor 1 - Dining Room



Max Dimensions: 16'10" x 11'6"
Calculated Area: 194 sq. ft
Included: Yes

Heated: Yes
Finished: Yes
Enclosed: Yes
Contiguous: Yes
Permitted: Yes
Wet space: No
Addition: No
Conversion: No

17 Floor 2 - Attic



Max Dimensions: 22'10" x 18'3"
Calculated Area: 174 sq. ft
Included: No

Heated: No
Finished: No
Enclosed: Yes
Contiguous: Yes
Permitted: Yes
Wet space: No
Addition: No
Conversion: No

18 Floor 2 - Hall



Max Dimensions: 7'7" x 16'3"
Calculated Area: 178 sq. ft
Included: Yes

Heated: Yes
Finished: Yes
Enclosed: Yes
Contiguous: Yes
Permitted: Yes
Wet space: No
Addition: No
Conversion: No

19 Floor 2 - Bedroom



Max Dimensions: 17'9" x 16'11"
Calculated Area: 253 sq. ft
Included: Yes

Heated: Yes
Finished: Yes
Enclosed: Yes
Contiguous: Yes
Permitted: Yes
Wet space: No
Addition: No
Conversion: No

20 Floor 2 - Bedroom



Max Dimensions: 14'1" x 12'6"
Calculated Area: 167 sq. ft
Included: Yes

Heated: Yes
Finished: Yes
Enclosed: Yes
Contiguous: Yes
Permitted: Yes
Wet space: No
Addition: No
Conversion: No

21 Floor 2 - Attic



Max Dimensions: 21'7" x 30'2"
Calculated Area: 269 sq. ft
Included: No

Heated: No
Finished: No
Enclosed: Yes
Contiguous: Yes
Permitted: Yes
Wet space: No
Addition: No
Conversion: No

22 Floor 2 - Bath



Max Dimensions: 5'10" x 10'4"
Calculated Area: 60 sq. ft
Included: Yes

Heated: Yes
Finished: Yes
Enclosed: Yes
Contiguous: Yes
Permitted: Yes
Wet space: Yes
Addition: No
Conversion: No

23 Floor 2 - Room



Max Dimensions: 17'2" x 33'6"
Calculated Area: 352 sq. ft
Included: Yes

Heated: Yes
Finished: Yes
Enclosed: Yes
Contiguous: Yes
Permitted: Yes
Wet space: No
Addition: No
Conversion: No

24 Floor 2 - W.I.C.



Max Dimensions: 7'10" x 6'4"
Calculated Area: 51 sq. ft
Included: Yes

Heated: Yes
Finished: Yes
Enclosed: Yes
Contiguous: Yes
Permitted: Yes
Wet space: No
Addition: No
Conversion: No

25 Floor 2 - Bath



Max Dimensions: 13'2" x 9'10"
Calculated Area: 99 sq. ft
Included: Yes

Heated: Yes
Finished: Yes
Enclosed: Yes
Contiguous: Yes
Permitted: Yes
Wet space: Yes
Addition: No
Conversion: No