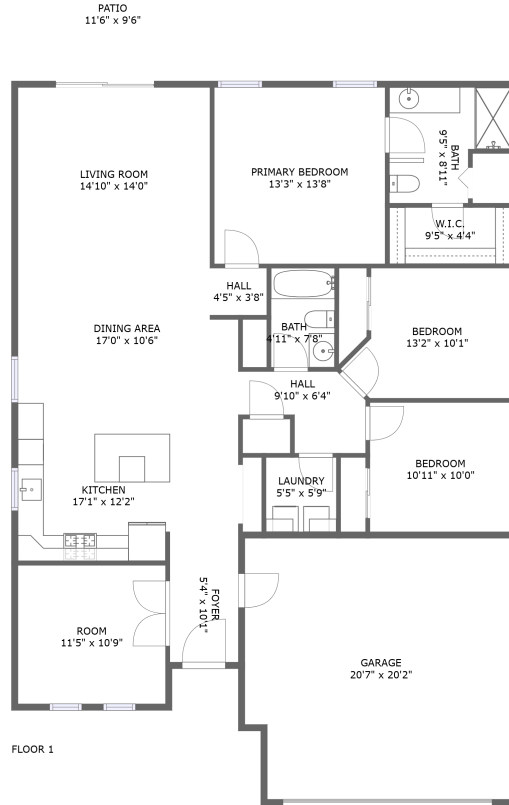


4718 Arbor Gate Drive, Eastgate, Bradenton, Manatee County, Florida, United States, 34203



Property Summary

 **1** garages

 **3** bedrooms

 **2** bathrooms

 **0** half baths

 **1** floors

 **1,608** Gross Living Area sqft

 **2,150** total sqft

4718 Arbor Gate Drive, Eastgate, Bradenton, Manatee County, Florida, United States, 34203



Room Dimensions

Floor 1

Total sqft: 2150

Living area: 1608

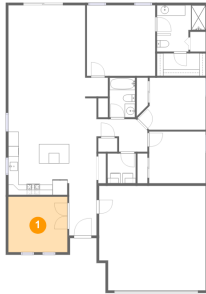
#	Room name	Dimensions	Area (sqft)	Counted as Living Area
1	Room	11'5" x 10'9"	122 sq. ft	Yes
2	Bath	9'5" x 8'11"	70 sq. ft	Yes
3	Dining Area	17'0" x 10'6"	170 sq. ft	Yes
4	Patio	11'6" x 9'6"	110 sq. ft	No
5	Bedroom	10'11" x 10'0"	109 sq. ft	Yes
6	W.i.c.	9'5" x 4'4"	41 sq. ft	Yes
7	Living Room	14'10" x 14'0"	208 sq. ft	Yes
8	Bath	4'11" x 7'8"	38 sq. ft	Yes
9	Foyer	5'4" x 10'1"	53 sq. ft	Yes
10	Hall	4'5" x 3'8"	16 sq. ft	Yes
11	Hall	9'10" x 6'4"	47 sq. ft	Yes

**4718 Arbor Gate Drive, Eastgate, Bradenton,
Manatee County, Florida, United States, 34203**

#	Room name	Dimensions	Area (sqft)	Counted as Living Area
12	Laundry	5'5" x 5'9"	31 sq. ft	Yes
13	Garage	20'7" x 20'2"	406 sq. ft	No
14	Primary Bedroom	13'3" x 13'8"	180 sq. ft	Yes
15	Kitchen	17'1" x 12'2"	195 sq. ft	Yes
16	Bedroom	13'2" x 10'1"	115 sq. ft	Yes

4718 Arbor Gate Drive, Eastgate, Bradenton, Manatee County, Florida, United States, 34203

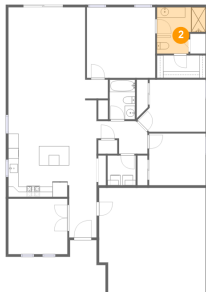
1 Floor 1 - Room



Dimensions: 11'5" x 10'9"
Area: 122 sq. ft
Counted as Living Area:
Yes

Heated: Yes
Finished: Yes
Enclosed: Yes
Contiguous:
Yes
Permitted: Yes
Wet Space: No
Addition: No
Conversion: No

2 Floor 1 - Bath

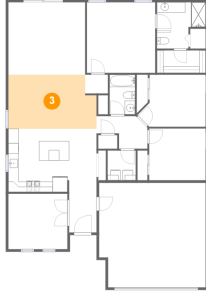


Dimensions: 9'5" x 8'11"
Area: 70 sq. ft
Counted as Living Area:
Yes

Heated: Yes
Finished: Yes
Enclosed: Yes
Contiguous:
Yes
Permitted: Yes
Wet Space: Yes
Addition: No
Conversion: No

4718 Arbor Gate Drive, Eastgate, Bradenton, Manatee County, Florida, United States, 34203

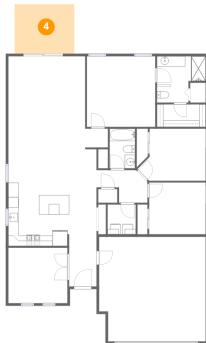
3 Floor 1 - Dining Area



Dimensions: 17'0" x 10'6"
Area: 170 sq. ft
Counted as Living Area:
Yes

Heated: Yes
Finished: Yes
Enclosed: Yes
Contiguous:
Yes
Permitted: Yes
Wet Space: No
Addition: No
Conversion: No

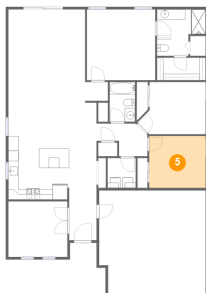
4 Floor 1 - Patio



Dimensions: 11'6" x 9'6"
Area: 110 sq. ft
Counted as Living Area: No

Heated: No
Finished: Yes
Enclosed: No
Contiguous: Yes
Permitted: Yes
Wet Space: No
Addition: No
Conversion: No

5 Floor 1 - Bedroom

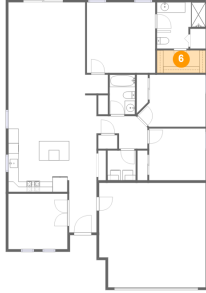


Dimensions: 10'11" x 10'0"
Area: 109 sq. ft
Counted as Living Area:
Yes

Heated: Yes
Finished: Yes
Enclosed: Yes
Contiguous:
Yes
Permitted: Yes
Wet Space: No
Addition: No
Conversion: No

4718 Arbor Gate Drive, Eastgate, Bradenton, Manatee County, Florida, United States, 34203

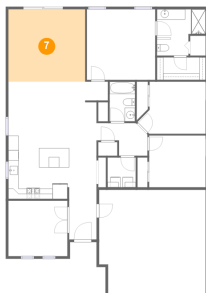
6 Floor 1 - W.i.c.



Dimensions: 9'5" x 4'4"
Area: 41 sq. ft
Counted as Living Area:
Yes

Heated: Yes
Finished: Yes
Enclosed: Yes
Contiguous:
Yes
Permitted: Yes
Wet Space: No
Addition: No
Conversion: No

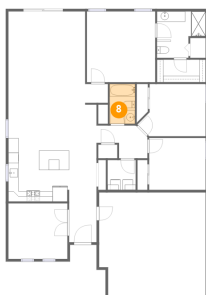
7 Floor 1 - Living Room



Dimensions: 14'10" x 14'0"
Area: 208 sq. ft
Counted as Living Area:
Yes

Heated: Yes
Finished: Yes
Enclosed: Yes
Contiguous:
Yes
Permitted: Yes
Wet Space: No
Addition: No
Conversion: No

8 Floor 1 - Bath

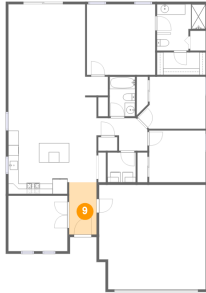


Dimensions: 4'11" x 7'8"
Area: 38 sq. ft
Counted as Living Area:
Yes

Heated: Yes
Finished: Yes
Enclosed: Yes
Contiguous:
Yes
Permitted: Yes
Wet Space: Yes
Addition: No
Conversion: No

4718 Arbor Gate Drive, Eastgate, Bradenton, Manatee County, Florida, United States, 34203

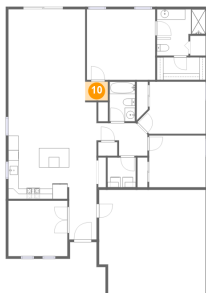
9 Floor 1 - Foyer



Dimensions: 5'4" x 10'1"
Area: 53 sq. ft
Counted as Living Area:
Yes

Heated: Yes
Finished: Yes
Enclosed: Yes
Contiguous:
Yes
Permitted: Yes
Wet Space: No
Addition: No
Conversion: No

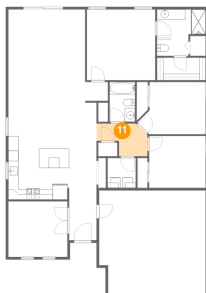
10 Floor 1 - Hall



Dimensions: 4'5" x 3'8"
Area: 16 sq. ft
Counted as Living Area:
Yes

Heated: Yes
Finished: Yes
Enclosed: Yes
Contiguous:
Yes
Permitted: Yes
Wet Space: No
Addition: No
Conversion: No

11 Floor 1 - Hall

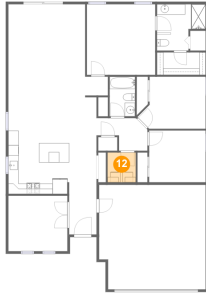


Dimensions: 9'10" x 6'4"
Area: 47 sq. ft
Counted as Living Area:
Yes

Heated: Yes
Finished: Yes
Enclosed: Yes
Contiguous:
Yes
Permitted: Yes
Wet Space: No
Addition: No
Conversion: No

4718 Arbor Gate Drive, Eastgate, Bradenton, Manatee County, Florida, United States, 34203

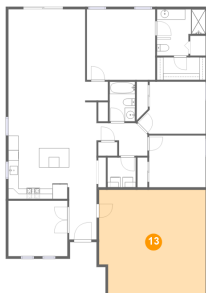
12 Floor 1 - Laundry



Dimensions: 5'5" x 5'9"
Area: 31 sq. ft
Counted as Living Area:
Yes

Heated: Yes
Finished: Yes
Enclosed: Yes
Contiguous:
Yes
Permitted: Yes
Wet Space: No
Addition: No
Conversion: No

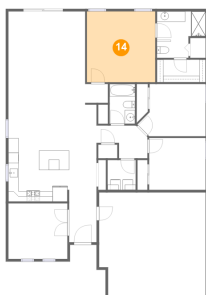
13 Floor 1 - Garage



Dimensions: 20'7" x 20'2"
Area: 406 sq. ft
Counted as Living Area: No

Heated: No
Finished: No
Enclosed: Yes
Contiguous: Yes
Permitted: Yes
Wet Space: No
Addition: No
Conversion: No

14 Floor 1 - Primary Bedroom

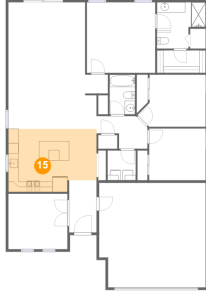


Dimensions: 13'3" x 13'8"
Area: 180 sq. ft
Counted as Living Area:
Yes

Heated: Yes
Finished: Yes
Enclosed: Yes
Contiguous:
Yes
Permitted: Yes
Wet Space: No
Addition: No
Conversion: No

4718 Arbor Gate Drive, Eastgate, Bradenton, Manatee County, Florida, United States, 34203

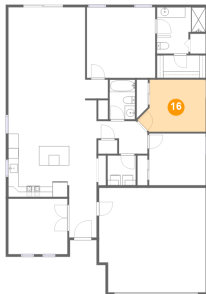
15 Floor 1 - Kitchen



Dimensions: 17'1" x 12'2"
Area: 195 sq. ft
Counted as Living Area:
Yes

Heated: Yes
Finished: Yes
Enclosed: Yes
Contiguous:
Yes
Permitted: Yes
Wet Space: No
Addition: No
Conversion: No

16 Floor 1 - Bedroom



Dimensions: 13'2" x 10'1"
Area: 115 sq. ft
Counted as Living Area:
Yes

Heated: Yes
Finished: Yes
Enclosed: Yes
Contiguous:
Yes
Permitted: Yes
Wet Space: No
Addition: No
Conversion: No