

Home report

2309 Premier St,Shelbyville,IN,US



FLOOR 1

Total Area: 1442 sq. ft
Floor 1: 1442 sq. ft
Excluded: Garage 501 sq. ft, Porch 45 sq. ft, Walls: 127 sq. ft

Property summary

 **1** Floors

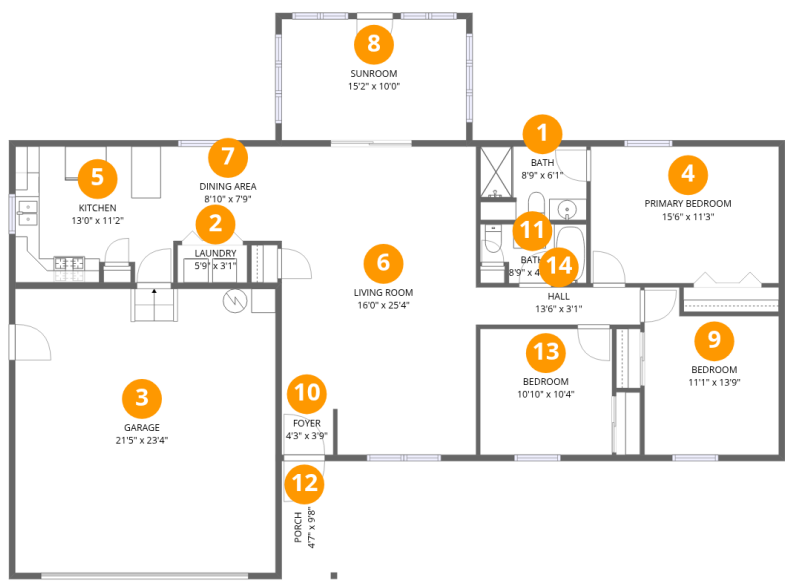
 **3** Bedrooms

 **2** Bathrooms

 **1** Garages

Home report

2309 Premier St,Shelbyville,IN,US



Room dimensions

Floor 1 Total:1442sqft Excluded: 546sqft

#		Max Dimensions	sqft	Included
1	Bath	8'9" x 6'1"	52 sq. ft	Yes
2	Laundry	5'9" x 3'1"	18 sq. ft	Yes
3	Garage	21'5" x 23'4"	501 sq. ft	No
4	Primary Bedroom	15'6" x 11'3"	174 sq. ft	Yes
5	Kitchen	13'0" x 11'2"	141 sq. ft	Yes
6	Living Room	16'0" x 25'4"	389 sq. ft	Yes
7	Dining Area	8'10" x 7'9"	69 sq. ft	Yes
8	Sunroom	15'2" x 10'0"	152 sq. ft	Yes
9	Bedroom	11'1" x 13'9"	133 sq. ft	Yes
10	Foyer	4'3" x 3'9"	16 sq. ft	Yes
11	Bath	8'9" x 4'10"	38 sq. ft	Yes

Home report

2309 Premier St,Shelbyville,IN,US

#		Max Dimensions	sqft	Included
12	Porch	4'7" x 9'8"	45 sq. ft	No
13	Bedroom	10'10" x 10'4"	112 sq. ft	Yes
14	Hall	13'6" x 3'1"	42 sq. ft	Yes

1 Floor 1 - Bath



Max Dimensions: 8'9" x 6'1"
Calculated Area: 52 sq. ft
Included: Yes

Heated: Yes
Finished: Yes
Enclosed: Yes
Contiguous: Yes
Permitted: Yes
Wet space: Yes
Addition: No
Conversion: No

2 Floor 1 - Laundry



Max Dimensions: 5'9" x 3'1"
Calculated Area: 18 sq. ft
Included: Yes

Heated: Yes
Finished: Yes
Enclosed: Yes
Contiguous: Yes
Permitted: Yes
Wet space: No
Addition: No
Conversion: No

3 Floor 1 - Garage



Max Dimensions: 21'5" x 23'4"
Calculated Area: 501 sq. ft
Included: No

Heated: No
Finished: No
Enclosed: Yes
Contiguous: Yes
Permitted: Yes
Wet space: No
Addition: No
Conversion: No

4 Floor 1 - Primary Bedroom



Max Dimensions: 15'6" x 11'3"
Calculated Area: 174 sq. ft
Included: Yes

Heated: Yes
Finished: Yes
Enclosed: Yes
Contiguous: Yes
Permitted: Yes
Wet space: No
Addition: No
Conversion: No

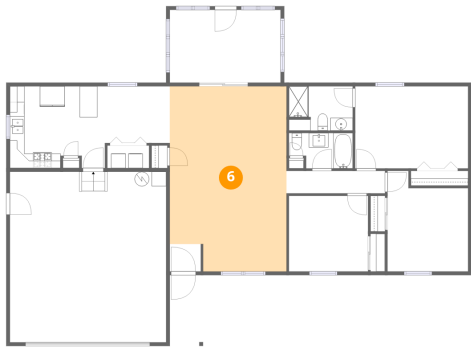
5 Floor 1 - Kitchen



Max Dimensions: 13'0" x 11'2"
Calculated Area: 141 sq. ft
Included: Yes

Heated: Yes
Finished: Yes
Enclosed: Yes
Contiguous: Yes
Permitted: Yes
Wet space: No
Addition: No
Conversion: No

6 Floor 1 - Living Room



Max Dimensions: 16'0" x 25'4"
Calculated Area: 389 sq. ft
Included: Yes

Heated: Yes
Finished: Yes
Enclosed: Yes
Contiguous: Yes
Permitted: Yes
Wet space: No
Addition: No
Conversion: No

7 Floor 1 - Dining Area



Max Dimensions: 8'10" x 7'9"
Calculated Area: 69 sq. ft
Included: Yes

Heated: Yes
Finished: Yes
Enclosed: Yes
Contiguous: Yes
Permitted: Yes
Wet space: No
Addition: No
Conversion: No

8 Floor 1 - Sunroom



Max Dimensions: 15'2" x 10'0"
Calculated Area: 152 sq. ft
Included: Yes

Heated: Yes
Finished: Yes
Enclosed: Yes
Contiguous: Yes
Permitted: Yes
Wet space: No
Addition: No
Conversion: No

9 Floor 1 - Bedroom



Max Dimensions: 11'1" x 13'9"
Calculated Area: 133 sq. ft
Included: Yes

Heated: Yes
Finished: Yes
Enclosed: Yes
Contiguous: Yes
Permitted: Yes
Wet space: No
Addition: No
Conversion: No

10 Floor 1 - Foyer



Max Dimensions: 4'3" x 3'9"
Calculated Area: 16 sq. ft
Included: Yes

Heated: Yes
Finished: Yes
Enclosed: Yes
Contiguous: Yes
Permitted: Yes
Wet space: No
Addition: No
Conversion: No

11 Floor 1 - Bath



Max Dimensions: 8'9" x 4'10"
Calculated Area: 38 sq. ft
Included: Yes

Heated: Yes
Finished: Yes
Enclosed: Yes
Contiguous: Yes
Permitted: Yes
Wet space: Yes
Addition: No
Conversion: No

12 Floor 1 - Porch



Max Dimensions: 4'7" x 9'8"
Calculated Area: 45 sq. ft
Included: No

Heated: No
Finished: No
Enclosed: No
Contiguous: Yes
Permitted: Yes
Wet space: No
Addition: No
Conversion: No

13 Floor 1 - Bedroom



Max Dimensions: 10'10" x 10'4"
Calculated Area: 112 sq. ft
Included: Yes

Heated: Yes
Finished: Yes
Enclosed: Yes
Contiguous: Yes
Permitted: Yes
Wet space: No
Addition: No
Conversion: No

14 Floor 1 - Hall



Max Dimensions: 13'6" x 3'1"
Calculated Area: 42 sq. ft
Included: Yes

Heated: Yes
Finished: Yes
Enclosed: Yes
Contiguous: Yes
Permitted: Yes
Wet space: No
Addition: No
Conversion: No