

Home report

**1031 Lake Breeze Drive, Goodview, Bedford County, Virginia,
United States, 24095**

 **1**
Half baths

 **1**
Garages

Home report

1031 Lake Breeze Drive, Goodview, Bedford County, Virginia, United States, 24095



Room dimensions

Floor 1

Total:2180sqft

Excluded: 3242sqft

#		Max Dimensions	sqft	Included
1	Office	8'0" x 8'7"	68 sq. ft	Yes
2	Wet Bar	8'6" x 7'4"	61 sq. ft	Yes
3	Porch	16'9" x 21'4"	358 sq. ft	No
4	Garage	23'8" x 21'2"	485 sq. ft	No
5	Primary Bedroom	15'9" x 13'7"	214 sq. ft	Yes
6	Living Room	15'5" x 16'4"	252 sq. ft	Yes
7	Covered Deck	9'11" x 6'11"	78 sq. ft	No
8	Storage	5'0" x 4'0"	20 sq. ft	No
9	Bath	5'11" x 13'11"	78 sq. ft	Yes
10	Deck	19'5" x 14'9"	286 sq. ft	No
11	Sitting Room	16'10" x 13'7"	201 sq. ft	Yes

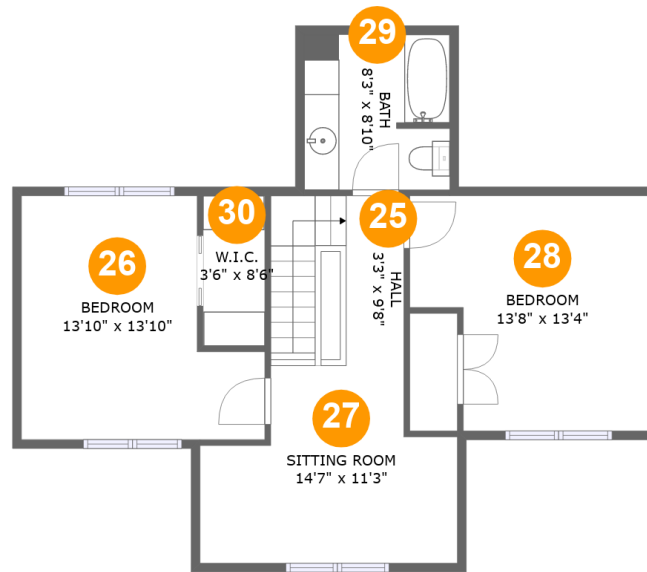
Home report

**1031 Lake Breeze Drive, Goodview, Bedford County, Virginia,
United States, 24095**

#		Max Dimensions	sqft	Included
12	Patio	28'4" x 40'4"	767 sq. ft	No
13	Porch	14'11" x 7'2"	124 sq. ft	No
14	Sunroom	16'1" x 16'9"	266 sq. ft	Yes
15	Kitchen	9'11" x 15'10"	156 sq. ft	Yes
16	Dining Area	9'10" x 9'11"	98 sq. ft	Yes
17	Deck	18'8" x 32'6"	417 sq. ft	No
18	Utility	9'7" x 16'9"	144 sq. ft	Yes
19	Deck	25'7" x 34'9"	708 sq. ft	No
20	Family Room	13'5" x 17'5"	234 sq. ft	Yes
21	Foyer	11'7" x 6'8"	78 sq. ft	Yes
22	Hall	7'7" x 10'10"	74 sq. ft	Yes
23	Bath	7'10" x 8'1"	62 sq. ft	Yes
24	WC	5'2" x 8'3"	42 sq. ft	Yes

Home report

1031 Lake Breeze Drive, Goodview, Bedford County, Virginia,
United States, 24095



Room dimensions

Floor 2

Total:668sqft

Excluded: 0sqft

#		Max Dimensions	sqft	Included
25	Hall	3'3" x 9'8"	73 sq. ft	Yes
26	Bedroom	13'10" x 13'10"	157 sq. ft	Yes
27	Sitting Room	14'7" x 11'3"	134 sq. ft	Yes
28	Bedroom	13'8" x 13'4"	161 sq. ft	Yes
29	Bath	8'3" x 8'10"	72 sq. ft	Yes
30	W.I.C.	3'6" x 8'6"	30 sq. ft	Yes

Home report

1031 Lake Breeze Drive, Goodview, Bedford County, Virginia,
United States, 24095

1 Floor 1 - Office



Max Dimensions: 8'0" x 8'7"
Calculated Area: 68 sq. ft
Included: Yes

Heated: Yes
Finished: Yes
Enclosed: Yes
Contiguous: Yes
Permitted: Yes
Wet space: No
Addition: No
Conversion: No

2 Floor 1 - Wet Bar



Max Dimensions: 8'6" x 7'4"
Calculated Area: 61 sq. ft
Included: Yes

Heated: Yes
Finished: Yes
Enclosed: Yes
Contiguous: Yes
Permitted: Yes
Wet space: No
Addition: No
Conversion: No

1031 Lake Breeze Drive, Goodview, Bedford County, Virginia,
United States, 24095

3 Floor 1 - Porch



Max Dimensions: 16'9" x 21'4"
Calculated Area: 358 sq. ft
Included: No

Heated: No
Finished: Yes
Enclosed: No
Contiguous: Yes
Permitted: Yes
Wet space: No
Addition: No
Conversion: No

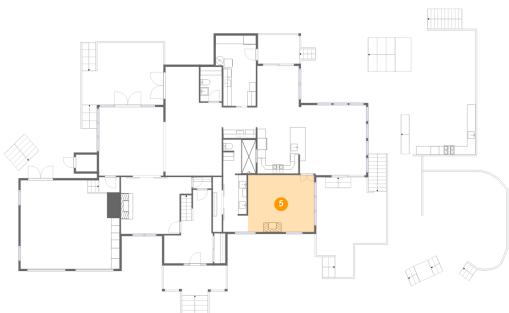
4 Floor 1 - Garage



Max Dimensions: 23'8" x 21'2"
Calculated Area: 485 sq. ft
Included: No

Heated: No
Finished: No
Enclosed: Yes
Contiguous: Yes
Permitted: Yes
Wet space: No
Addition: No
Conversion: No

5 Floor 1 - Primary Bedroom

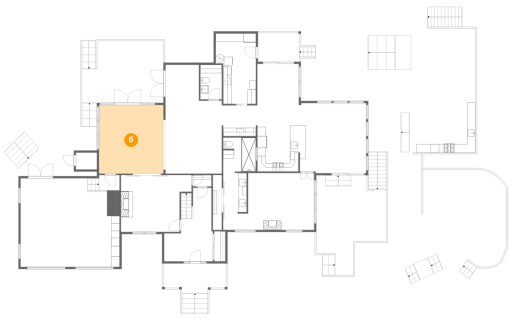


Max Dimensions: 15'9" x 13'7"
Calculated Area: 214 sq. ft
Included: Yes

Heated: Yes
Finished: Yes
Enclosed: Yes
Contiguous: Yes
Permitted: Yes
Wet space: No
Addition: No
Conversion: No

1031 Lake Breeze Drive, Goodview, Bedford County, Virginia,
United States, 24095

6 Floor 1 - Living Room



Max Dimensions: 15'5" x 16'4"
Calculated Area: 252 sq. ft
Included: Yes

Heated: Yes
Finished: Yes
Enclosed: Yes
Contiguous: Yes
Permitted: Yes
Wet space: No
Addition: No
Conversion: No

7 Floor 1 - Covered Deck



Max Dimensions: 9'11" x 6'11"
Calculated Area: 78 sq. ft
Included: No

Heated: No
Finished: Yes
Enclosed: No
Contiguous: Yes
Permitted: Yes
Wet space: No
Addition: No
Conversion: No

8 Floor 1 - Storage



Max Dimensions: 5'0" x 4'0"
Calculated Area: 20 sq. ft
Included: No

Heated: No
Finished: No
Enclosed: No
Contiguous: Yes
Permitted: Yes
Wet space: No
Addition: No
Conversion: No

1031 Lake Breeze Drive, Goodview, Bedford County, Virginia,
United States, 24095

9 Floor 1 - Bath



Max Dimensions: 5'11" x 13'11"
Calculated Area: 78 sq. ft
Included: Yes

Heated: Yes
Finished: Yes
Enclosed: Yes
Contiguous: Yes
Permitted: Yes
Wet space: Yes
Addition: No
Conversion: No

10 Floor 1 - Deck



Max Dimensions: 19'5" x 14'9"
Calculated Area: 286 sq. ft
Included: No

Heated: No
Finished: Yes
Enclosed: No
Contiguous: Yes
Permitted: Yes
Wet space: No
Addition: No
Conversion: No

11 Floor 1 - Sitting Room



Max Dimensions: 16'10" x 13'7"
Calculated Area: 201 sq. ft
Included: Yes

Heated: Yes
Finished: Yes
Enclosed: Yes
Contiguous: Yes
Permitted: Yes
Wet space: No
Addition: No
Conversion: No

1031 Lake Breeze Drive, Goodview, Bedford County, Virginia,
United States, 24095

12 Floor 1 - Patio



Max Dimensions: 28'4" x 40'4"
Calculated Area: 767 sq. ft
Included: No

Heated: No
Finished: Yes
Enclosed: No
Contiguous: Yes
Permitted: Yes
Wet space: No
Addition: No
Conversion: No

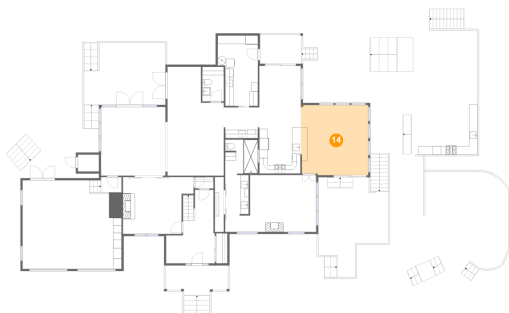
13 Floor 1 - Porch



Max Dimensions: 14'11" x 7'2"
Calculated Area: 124 sq. ft
Included: No

Heated: No
Finished: Yes
Enclosed: No
Contiguous: Yes
Permitted: Yes
Wet space: No
Addition: No
Conversion: No

14 Floor 1 - Sunroom

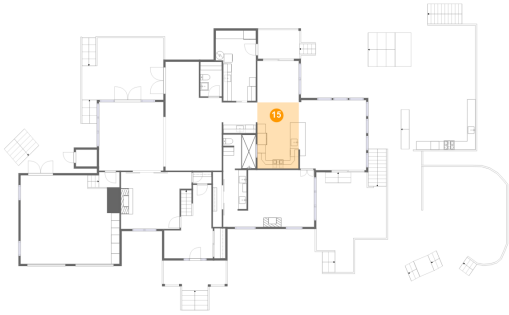


Max Dimensions: 16'1" x 16'9"
Calculated Area: 266 sq. ft
Included: Yes

Heated: Yes
Finished: Yes
Enclosed: Yes
Contiguous: Yes
Permitted: Yes
Wet space: No
Addition: No
Conversion: No

1031 Lake Breeze Drive, Goodview, Bedford County, Virginia,
United States, 24095

15 Floor 1 - Kitchen



Max Dimensions: 9'11" x 15'10"
Calculated Area: 156 sq. ft
Included: Yes

Heated: Yes
Finished: Yes
Enclosed: Yes
Contiguous: Yes
Permitted: Yes
Wet space: No
Addition: No
Conversion: No

16 Floor 1 - Dining Area



Max Dimensions: 9'10" x 9'11"
Calculated Area: 98 sq. ft
Included: Yes

Heated: Yes
Finished: Yes
Enclosed: Yes
Contiguous: Yes
Permitted: Yes
Wet space: No
Addition: No
Conversion: No

17 Floor 1 - Deck



Max Dimensions: 18'8" x 32'6"
Calculated Area: 417 sq. ft
Included: No

Heated: No
Finished: Yes
Enclosed: No
Contiguous: Yes
Permitted: Yes
Wet space: No
Addition: No
Conversion: No

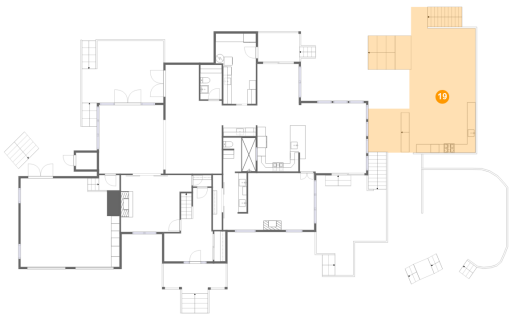
18 Floor 1 - Utility



Max Dimensions: 9'7" x 16'9"
Calculated Area: 144 sq. ft
Included: Yes

Heated: Yes
Finished: Yes
Enclosed: Yes
Contiguous: Yes
Permitted: Yes
Wet space: No
Addition: No
Conversion: No

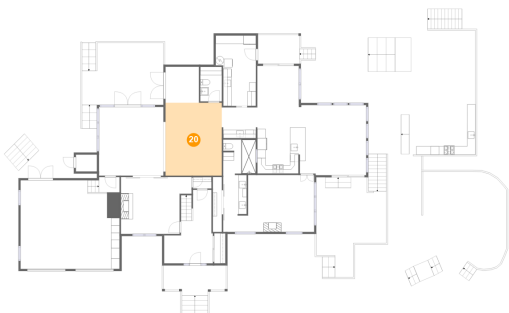
19 Floor 1 - Deck



Max Dimensions: 25'7" x 34'9"
Calculated Area: 708 sq. ft
Included: No

Heated: No
Finished: Yes
Enclosed: No
Contiguous: Yes
Permitted: Yes
Wet space: No
Addition: No
Conversion: No

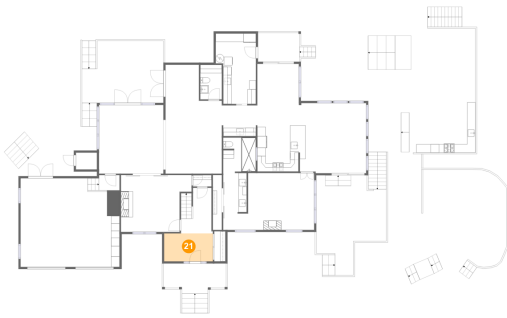
20 Floor 1 - Family Room



Max Dimensions: 13'5" x 17'5"
Calculated Area: 234 sq. ft
Included: Yes

Heated: Yes
Finished: Yes
Enclosed: Yes
Contiguous: Yes
Permitted: Yes
Wet space: No
Addition: No
Conversion: No

21 Floor 1 - Foyer



Max Dimensions: 11'7" x 6'8"
Calculated Area: 78 sq. ft
Included: Yes

Heated: Yes
Finished: Yes
Enclosed: Yes
Contiguous: Yes
Permitted: Yes
Wet space: No
Addition: No
Conversion: No

22 Floor 1 - Hall



Max Dimensions: 7'7" x 10'10"
Calculated Area: 74 sq. ft
Included: Yes

Heated: Yes
Finished: Yes
Enclosed: Yes
Contiguous: Yes
Permitted: Yes
Wet space: No
Addition: No
Conversion: No

23 Floor 1 - Bath



Max Dimensions: 7'10" x 8'1"
Calculated Area: 62 sq. ft
Included: Yes

Heated: Yes
Finished: Yes
Enclosed: Yes
Contiguous: Yes
Permitted: Yes
Wet space: Yes
Addition: No
Conversion: No

1031 Lake Breeze Drive, Goodview, Bedford County, Virginia,
United States, 24095

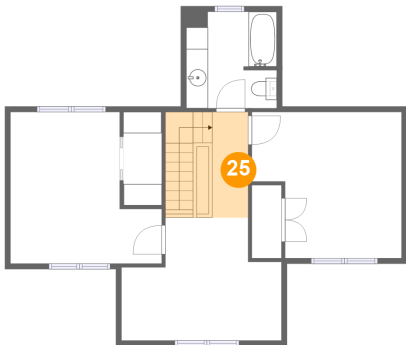
24 Floor 1 - WC



Max Dimensions: 5'2" x 8'3"
Calculated Area: 42 sq. ft
Included: Yes

Heated: Yes
Finished: Yes
Enclosed: Yes
Contiguous: Yes
Permitted: Yes
Wet space: Yes
Addition: No
Conversion: No

25 Floor 2 - Hall



Max Dimensions: 3'3" x 9'8"
Calculated Area: 73 sq. ft
Included: Yes

Heated: Yes
Finished: Yes
Enclosed: Yes
Contiguous: Yes
Permitted: Yes
Wet space: No
Addition: No
Conversion: No

26 Floor 2 - Bedroom

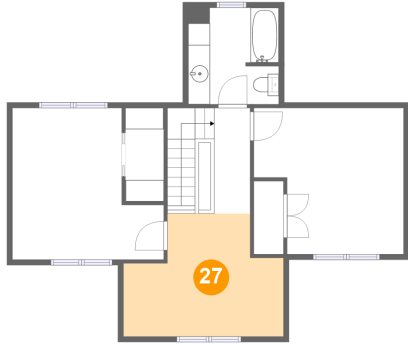


Max Dimensions: 13'10" x
13'10"
Calculated Area: 157 sq. ft
Included: Yes

Heated: Yes
Finished: Yes
Enclosed: Yes
Contiguous:
Yes
Permitted: Yes
Wet space: No
Addition: No
Conversion: No

1031 Lake Breeze Drive, Goodview, Bedford County, Virginia,
United States, 24095

27 Floor 2 - Sitting Room



Max Dimensions: 14'7" x 11'3"
Calculated Area: 134 sq. ft
Included: Yes

Heated: Yes
Finished: Yes
Enclosed: Yes
Contiguous: Yes
Permitted: Yes
Wet space: No
Addition: No
Conversion: No

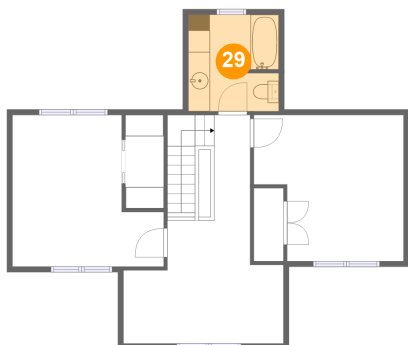
28 Floor 2 - Bedroom



Max Dimensions: 13'8" x 13'4"
Calculated Area: 161 sq. ft
Included: Yes

Heated: Yes
Finished: Yes
Enclosed: Yes
Contiguous: Yes
Permitted: Yes
Wet space: No
Addition: No
Conversion: No

29 Floor 2 - Bath



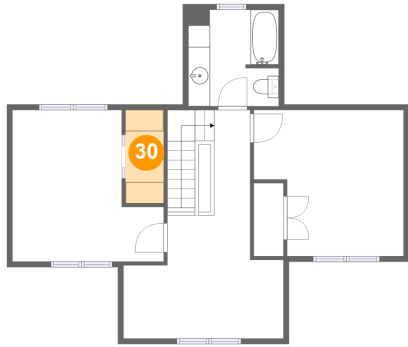
Max Dimensions: 8'3" x 8'10"
Calculated Area: 72 sq. ft
Included: Yes

Heated: Yes
Finished: Yes
Enclosed: Yes
Contiguous: Yes
Permitted: Yes
Wet space: Yes
Addition: No
Conversion: No

Home report

1031 Lake Breeze Drive, Goodview, Bedford County, Virginia,
United States, 24095

30 Floor 2 - W.I.C.



Max Dimensions: 3'6" x 8'6"
Calculated Area: 30 sq. ft
Included: Yes

Heated: Yes
Finished: Yes
Enclosed: Yes
Contiguous: Yes
Permitted: Yes
Wet space: No
Addition: No
Conversion: No