

# 16 Hillmount Crescent, Tanglewood, Crestview, Nepean, Ontario, Canada, K2G 3E3




## Property Summary

 **0** garages

 **4** bedrooms

 **1** bathrooms

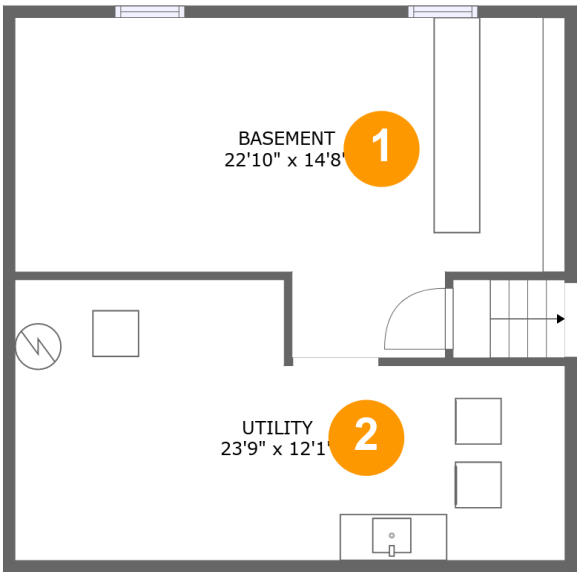
 **1** half baths

 **4** floors

 **1,502**  
Gross Living  
Area sqft

 **2,136**  
total sqft

16 Hillmount Crescent, Tanglewood, Crestview,  
Nepean, Ontario, Canada, K2G 3E3



Room Dimensions

Floor 1 Total sqft: 605 Living area: 0

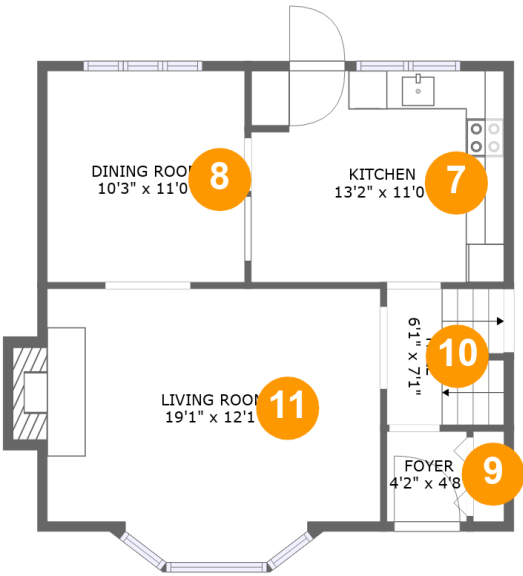
#	Room name	Dimensions	Area (sqft)	Counted as Living Area
1	Basement	22'10" x 14'8"	285 sq. ft	No
2	Utility	23'9" x 12'1"	243 sq. ft	No

Floor plan of the second floor showing three bedrooms, a hall, and a WC. The rooms are numbered 3, 4, and 5. Bedroom 3 is 9'1" x 12'9", Bedroom 4 is 10'8" x 7'8", and Bedroom 5 is 14'1" x 10'4". The WC is 7'0" x 4'8". The plan includes a staircase and a balcony.

**Living area: 455**

#	Room name	Dimensions	Area (sqft)	Counted as Living Area
3	Bedroom	9'1" x 12'9"	102 sq. ft	Yes
4	Hall	10'8" x 7'8"	76 sq. ft	Yes
5	Bedroom	14'1" x 10'4"	146 sq. ft	Yes
6	Wc	7'0" x 4'8"	33 sq. ft	Yes

**16 Hillmount Crescent, Tanglewood, Crestview,  
Nepean, Ontario, Canada, K2G 3E3**

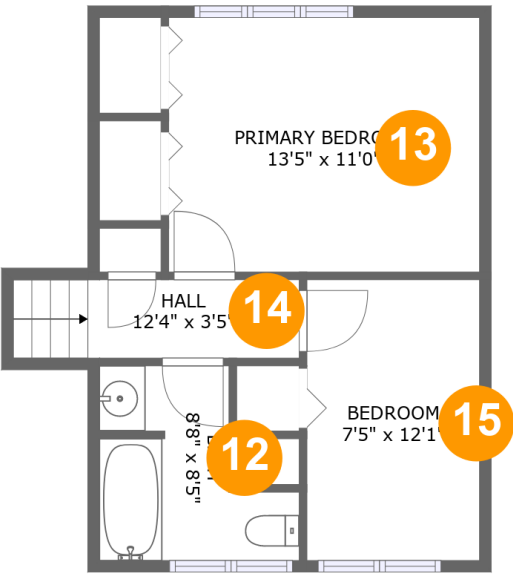


**Room Dimensions**

**Floor 3** **Total sqft: 634** **Living area: 605**

#	Room name	Dimensions	Area (sqft)	Counted as Living Area
7	Kitchen	13'2" x 11'0"	145 sq. ft	Yes
8	Dining Room	10'3" x 11'0"	113 sq. ft	Yes
9	Foyer	4'2" x 4'8"	19 sq. ft	Yes
10	Hall	6'1" x 7'1"	42 sq. ft	Yes
11	Living Room	19'1" x 12'1"	218 sq. ft	Yes

16 Hillmount Crescent, Tanglewood, Crestview,  
Nepean, Ontario, Canada, K2G 3E3



Room Dimensions

Floor 4

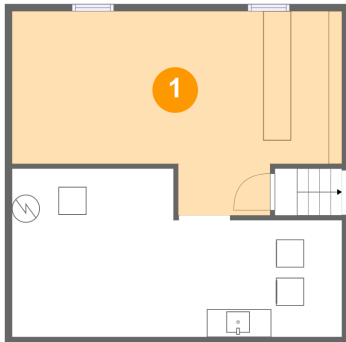
Total sqft: 442

Living area: 442

#	Room name	Dimensions	Area (sqft)	Counted as Living Area
12	Bath	8'8" x 8'5"	55 sq. ft	Yes
13	Primary Bedroom	13'5" x 11'0"	147 sq. ft	Yes
14	Hall	12'4" x 3'5"	42 sq. ft	Yes
15	Bedroom	7'5" x 12'1"	90 sq. ft	Yes

# 16 Hillmount Crescent, Tanglewood, Crestview, Nepean, Ontario, Canada, K2G 3E3

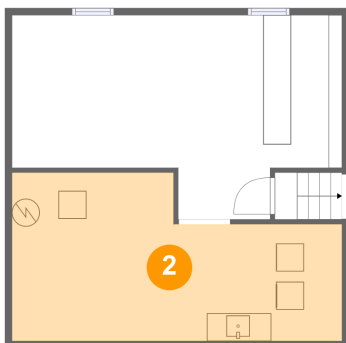
## 1 Floor 1 - Basement



Dimensions: 22'10" x 14'8"  
Area: 285 sq. ft  
Counted as Living Area: No

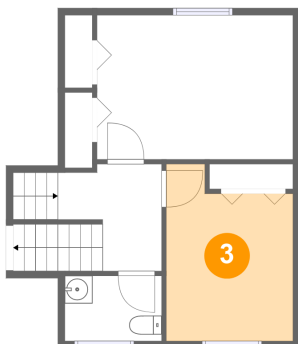
Heated: No  
Finished: Yes  
Enclosed: Yes  
Contiguous: Yes  
Permitted: Yes  
Wet Space: No  
Addition: No  
Conversion: No

## 2 Floor 1 - Utility



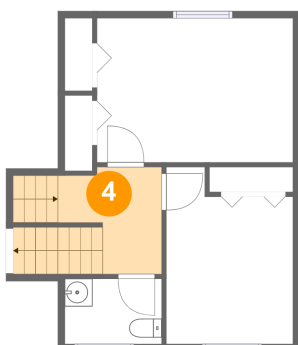
Dimensions: 23'9" x 12'1"  
Area: 243 sq. ft  
Counted as Living Area: No

Heated: Yes  
Finished: Yes  
Enclosed: Yes  
Contiguous: No  
Permitted: Yes  
Wet Space: No  
Addition: No  
Conversion: No

**16 Hillmount Crescent, Tanglewood, Crestview,  
Nepean, Ontario, Canada, K2G 3E3****3 Floor 2 - Bedroom**

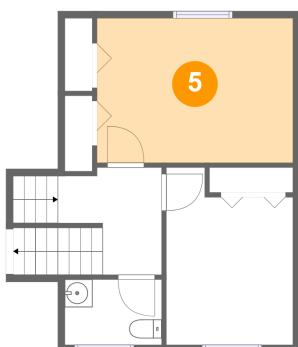
Dimensions: 9'1" x 12'9"  
Area: 102 sq. ft  
Counted as Living Area:  
Yes

Heated: Yes  
Finished: Yes  
Enclosed: Yes  
Contiguous:  
Yes  
Permitted: Yes  
Wet Space: No  
Addition: No  
Conversion: No

**4 Floor 2 - Hall**

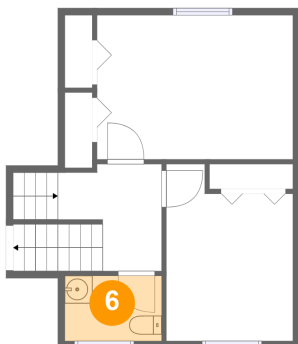
Dimensions: 10'8" x 7'8"  
Area: 76 sq. ft  
Counted as Living Area:  
Yes

Heated: Yes  
Finished: Yes  
Enclosed: Yes  
Contiguous:  
Yes  
Permitted: Yes  
Wet Space: No  
Addition: No  
Conversion: No

**5 Floor 2 - Bedroom**

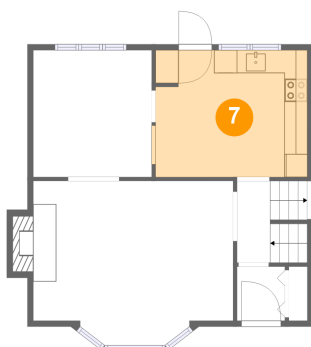
Dimensions: 14'1" x 10'4"  
Area: 146 sq. ft  
Counted as Living Area:  
Yes

Heated: Yes  
Finished: Yes  
Enclosed: Yes  
Contiguous:  
Yes  
Permitted: Yes  
Wet Space: No  
Addition: No  
Conversion: No

**16 Hillmount Crescent, Tanglewood, Crestview,  
Nepean, Ontario, Canada, K2G 3E3****6 Floor 2 - Wc**

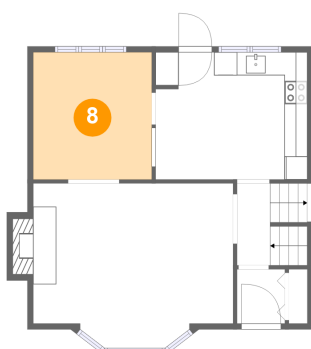
Dimensions: 7'0" x 4'8"  
Area: 33 sq. ft  
Counted as Living Area:  
Yes

Heated: Yes  
Finished: Yes  
Enclosed: Yes  
Contiguous:  
Yes  
Permitted: Yes  
Wet Space: Yes  
Addition: No  
Conversion: No

**7 Floor 3 - Kitchen**

Dimensions: 13'2" x 11'0"  
Area: 145 sq. ft  
Counted as Living Area:  
Yes

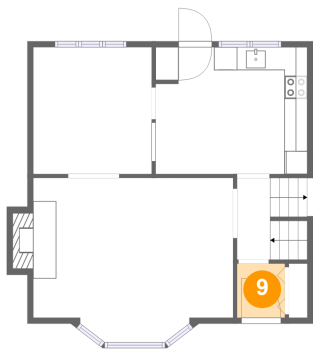
Heated: Yes  
Finished: Yes  
Enclosed: Yes  
Contiguous:  
Yes  
Permitted: Yes  
Wet Space: No  
Addition: No  
Conversion: No

**8 Floor 3 - Dining Room**

Dimensions: 10'3" x 11'0"  
Area: 113 sq. ft  
Counted as Living Area:  
Yes

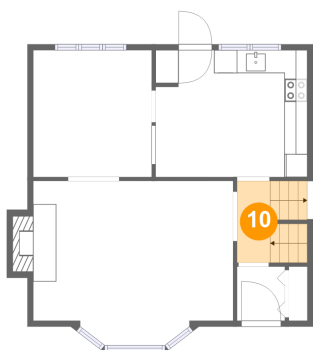
Heated: Yes  
Finished: Yes  
Enclosed: Yes  
Contiguous:  
Yes  
Permitted: Yes  
Wet Space: No  
Addition: No  
Conversion: No



**16 Hillmount Crescent, Tanglewood, Crestview,  
Nepean, Ontario, Canada, K2G 3E3****9 Floor 3 - Foyer**

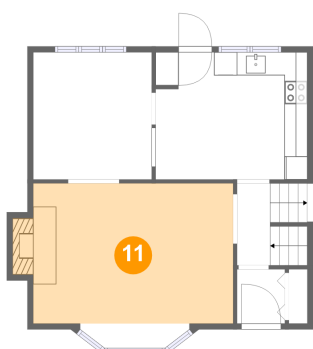
Dimensions: 4'2" x 4'8"  
Area: 19 sq. ft  
Counted as Living Area:  
Yes

Heated: Yes  
Finished: Yes  
Enclosed: Yes  
Contiguous:  
Yes  
Permitted: Yes  
Wet Space: No  
Addition: No  
Conversion: No

**10 Floor 3 - Hall**

Dimensions: 6'1" x 7'1"  
Area: 42 sq. ft  
Counted as Living Area:  
Yes

Heated: Yes  
Finished: Yes  
Enclosed: Yes  
Contiguous:  
Yes  
Permitted: Yes  
Wet Space: No  
Addition: No  
Conversion: No

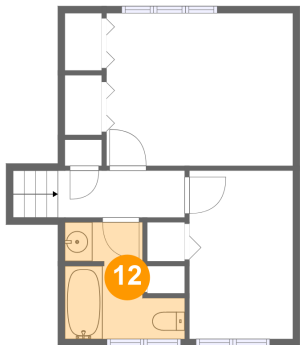
**11 Floor 3 - Living Room**

Dimensions: 19'1" x 12'1"  
Area: 218 sq. ft  
Counted as Living Area:  
Yes

Heated: Yes  
Finished: Yes  
Enclosed: Yes  
Contiguous:  
Yes  
Permitted: Yes  
Wet Space: No  
Addition: No  
Conversion: No

**16 Hillmount Crescent, Tanglewood, Crestview,  
Nepean, Ontario, Canada, K2G 3E3**

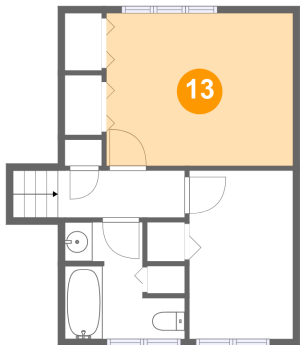
**12 Floor 4 - Bath**



Dimensions: 8'8" x 8'5"  
Area: 55 sq. ft  
Counted as Living Area:  
Yes

Heated: Yes  
Finished: Yes  
Enclosed: Yes  
Contiguous:  
Yes  
Permitted: Yes  
Wet Space: Yes  
Addition: No  
Conversion: No

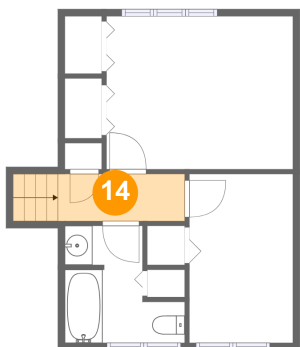
**13 Floor 4 - Primary Bedroom**



Dimensions: 13'5" x 11'0"  
Area: 147 sq. ft  
Counted as Living Area:  
Yes

Heated: Yes  
Finished: Yes  
Enclosed: Yes  
Contiguous:  
Yes  
Permitted: Yes  
Wet Space: No  
Addition: No  
Conversion: No

**14 Floor 4 - Hall**

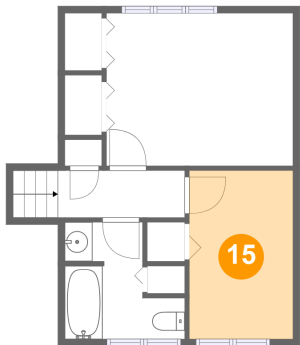


Dimensions: 12'4" x 3'5"  
Area: 42 sq. ft  
Counted as Living Area:  
Yes

Heated: Yes  
Finished: Yes  
Enclosed: Yes  
Contiguous:  
Yes  
Permitted: Yes  
Wet Space: No  
Addition: No  
Conversion: No

**16 Hillmount Crescent, Tanglewood, Crestview,  
Nepean, Ontario, Canada, K2G 3E3**

**15 Floor 4 - Bedroom**



Dimensions: 7'5" x 12'1"  
Area: 90 sq. ft  
Counted as Living Area:  
Yes

Heated: Yes  
Finished: Yes  
Enclosed: Yes  
Contiguous:  
Yes  
Permitted: Yes  
Wet Space: No  
Addition: No  
Conversion: No