



1308 Tralee Circle
Aberdeen, MD 21001



1308 Tralee Circle Aberdeen, MD 21001

Sharon Dorsch
Realtor®

Phone: (443) 465-0123

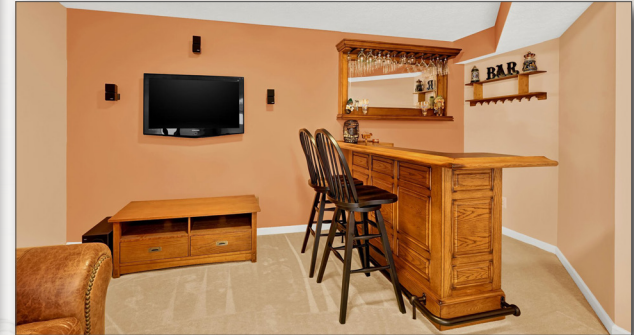
Email: sharon.dorsch@Inf.com

Web: www.longandfoster.com/SharonDorsch





 4 Bed
  2.5 Bath
  2,828 Sq Ft
  0.33 Acres



This home offers modern amenities and cozy comfort, perfect for relaxation and entertaining.

The kitchen offers an abundance of cabinets and countertops that will be sure to delight the chefs, with space for cooking and hosting gatherings. The family room is inviting with a gas fireplace for warmth and cozy atmosphere. Outside, enjoy a two tier Trex deck with a built-in counter area with chairs and steps to beautifully landscaped grounds. The Primary bedroom is a retreat with a remodeled primary bath and a spacious walk-in closet. Enjoy a lower-level finished family room, recreation room and spacious storage rm with rough in and slider to patio. Recent updates include a recent roof, water heater, recent flooring on main and upper level to add even more beauty to this home. Schedule your tour today to see all the other fine features of this home.

The information contained herein has been obtained through sources deemed reliable by the Realtor, but cannot be guaranteed for its accuracy. We recommend to the buyer that any information, which is of special interest, should be obtained through independent verification. ALL MEASUREMENTS ARE APPROXIMATE. Photography & Flyer produced by: Real Estate Exposures - realestateexposures.com - (717) 747-3235



Produced by:





PRESENTED BY

Sharon Dorsch
Realtor®

Phone: (443) 465-0123

Email: sharon.dorsch@lnf.com

Web: www.longandfoster.com/SharonDorsch



LONG & FOSTER®
REAL ESTATE

Forbes
GLOBAL PROPERTIES

