

Home report

309 W 5th Ave, Flint, MI, US



Total Area: 1387 sq. ft

Below Ground: 0 sq. ft, Floor 2: 693 sq. ft, Floor 3: 694 sq. ft

Excluded: Basement 692 sq. ft, Walls: 190 sq. ft

Property summary

 **3** Floors

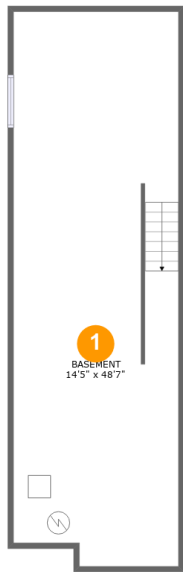
 **3** Bedrooms

 **2** Bathrooms

 **1** Half baths

Home report

309 W 5th Ave,Flint,MI,US



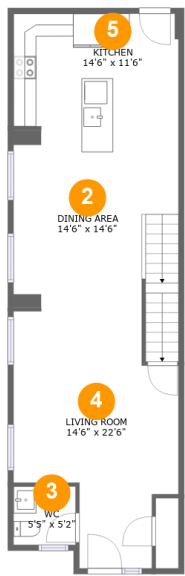
Room dimensions

Floor 1 Below ground Total:0sqft Excluded: 692sqft

#		Max Dimensions	sqft	Included
1	Basement	14'5" x 48'7"	692 sq. ft	No

Home report

309 W 5th Ave,Flint,MI,US



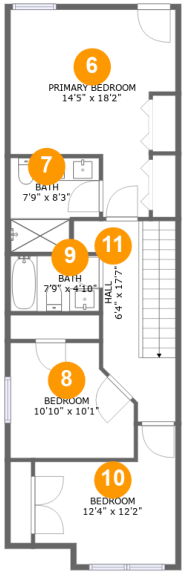
Room dimensions

Floor 2 Total:693sqft Excluded: 0sqft

#		Max Dimensions	sqft	Included
2	Dining Area	14'6" x 14'6"	222 sq. ft	Yes
3	WC	5'5" x 5'2"	28 sq. ft	Yes
4	Living Room	14'6" x 22'6"	252 sq. ft	Yes
5	Kitchen	14'6" x 11'6"	166 sq. ft	Yes

Home report

309 W 5th Ave, Flint, MI, US

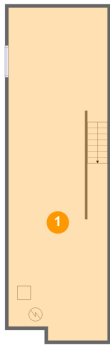


Room dimensions

Floor 3 Total:694sqft Excluded: 0sqft

#		Max Dimensions	sqft	Included
6	Primary Bedroom	14'5" x 18'2"	193 sq. ft	Yes
7	Bath	7'9" x 8'3"	56 sq. ft	Yes
8	Bedroom	10'10" x 10'1"	98 sq. ft	Yes
9	Bath	7'9" x 4'10"	38 sq. ft	Yes
10	Bedroom	12'4" x 12'2"	114 sq. ft	Yes
11	Hall	6'4" x 17'7"	109 sq. ft	Yes

1 Floor 1 - Basement



Max Dimensions: 14'5" x 48'7"
Calculated Area: 692 sq. ft
Included: No

Heated: Yes
Finished: No
Enclosed: Yes
Contiguous: Yes
Permitted: Yes
Wet space: No
Addition: No
Conversion: No

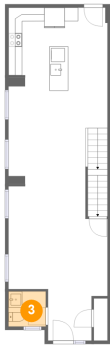
2 Floor 2 - Dining Area



Max Dimensions: 14'6" x 14'6"
Calculated Area: 222 sq. ft
Included: Yes

Heated: Yes
Finished: Yes
Enclosed: Yes
Contiguous: Yes
Permitted: Yes
Wet space: No
Addition: No
Conversion: No

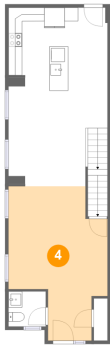
3 Floor 2 - WC



Max Dimensions: 5'5" x 5'2"
Calculated Area: 28 sq. ft
Included: Yes

Heated: Yes
Finished: Yes
Enclosed: Yes
Contiguous: Yes
Permitted: Yes
Wet space: Yes
Addition: No
Conversion: No

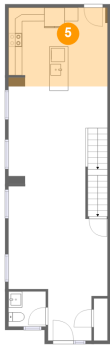
4 Floor 2 - Living Room



Max Dimensions: 14'6" x 22'6"
Calculated Area: 252 sq. ft
Included: Yes

Heated: Yes
Finished: Yes
Enclosed: Yes
Contiguous: Yes
Permitted: Yes
Wet space: No
Addition: No
Conversion: No

5 Floor 2 - Kitchen



Max Dimensions: 14'6" x 11'6"
Calculated Area: 166 sq. ft
Included: Yes

Heated: Yes
Finished: Yes
Enclosed: Yes
Contiguous: Yes
Permitted: Yes
Wet space: No
Addition: No
Conversion: No



Heated: Yes
Finished: Yes
Enclosed: Yes
Contiguous:
Yes
Permitted: Yes
Wet space: No
Addition: No
Conversion: No



Heated: Yes
Finished: Yes
Enclosed: Yes
Contiguous: Yes
Permitted: Yes
Wet space: Yes
Addition: No
Conversion: No



Heated: Yes
Finished: Yes
Enclosed: Yes
Contiguous:
Yes
Permitted: Yes
Wet space: No
Addition: No
Conversion: No

9 Floor 3 - Bath



Max Dimensions: 7'9" x 4'10"
Calculated Area: 38 sq. ft
Included: Yes

Heated: Yes
Finished: Yes
Enclosed: Yes
Contiguous: Yes
Permitted: Yes
Wet space: Yes
Addition: No
Conversion: No

10 Floor 3 - Bedroom



Max Dimensions: 12'4" x 12'2"
Calculated Area: 114 sq. ft
Included: Yes

Heated: Yes
Finished: Yes
Enclosed: Yes
Contiguous: Yes
Permitted: Yes
Wet space: No
Addition: No
Conversion: No

11 Floor 3 - Hall



Max Dimensions: 6'4" x 17'7"
Calculated Area: 109 sq. ft
Included: Yes

Heated: Yes
Finished: Yes
Enclosed: Yes
Contiguous: Yes
Permitted: Yes
Wet space: No
Addition: No
Conversion: No