

732 Fringed Orchid Trail, Plantation, Venice, Sarasota County, Florida, United States, 34293



Property Summary


 **1** garages

 **3** bedrooms

 **2** bathrooms

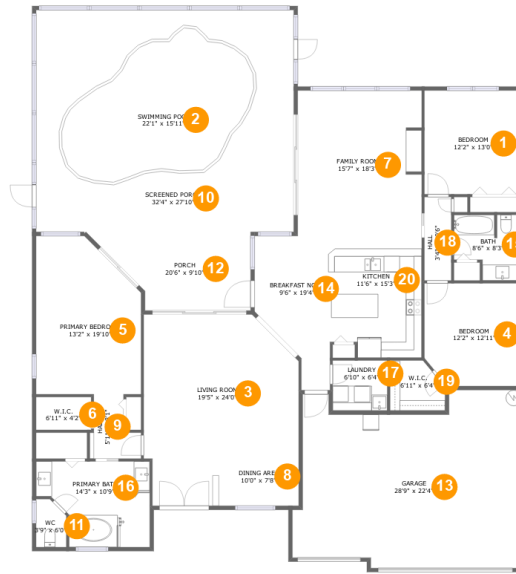
 **0** half baths

 **1** floors

 **2,239** Gross Living Area sqft

 **3,612** total sqft

732 Fringed Orchid Trail, Plantation, Venice, Sarasota County, Florida, United States, 34293



Room Dimensions

Floor 1

Total sqft: 3612

Living area: 2239

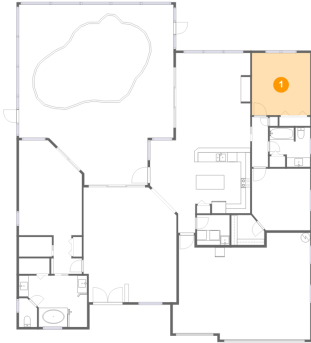
#	Room name	Dimensions	Area (sqft)	Counted as Living Area
1	Bedroom	12'2" x 13'0"	159 sq. ft	Yes
2	Swimming Pool	22'1" x 15'11"	313 sq. ft	No
3	Living Room	19'5" x 24'0"	367 sq. ft	Yes
4	Bedroom	12'2" x 12'11"	152 sq. ft	Yes
5	Primary Bedroom	13'2" x 19'10"	236 sq. ft	Yes
6	W.i.c.	6'11" x 4'2"	29 sq. ft	Yes
7	Family Room	15'7" x 18'3"	283 sq. ft	Yes
8	Dining Area	10'0" x 7'8"	77 sq. ft	Yes
9	Hall	5'11" x 8'1"	39 sq. ft	Yes
10	Screened Porch	32'4" x 27'10"	900 sq. ft	No
11	Wc	3'9" x 6'0"	21 sq. ft	Yes

**732 Fringed Orchid Trail, Plantation, Venice,
Sarasota County, Florida, United States, 34293**

#	Room name	Dimensions	Area (sqft)	Counted as Living Area
12	Porch	20'6" x 9'10"	158 sq. ft	No
13	Garage	28'9" x 22'4"	562 sq. ft	No
14	Breakfast Nook	9'6" x 19'4"	143 sq. ft	Yes
15	Bath	8'6" x 8'3"	60 sq. ft	Yes
16	Primary Bath	14'3" x 10'9"	130 sq. ft	Yes
17	Laundry	6'10" x 6'4"	43 sq. ft	Yes
18	Hall	3'4" x 10'6"	35 sq. ft	Yes
19	W.i.c.	6'11" x 6'4"	39 sq. ft	Yes
20	Kitchen	11'6" x 15'3"	169 sq. ft	Yes

732 Fringed Orchid Trail, Plantation, Venice, Sarasota County, Florida, United States, 34293

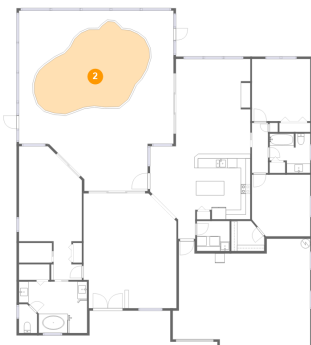
1 Floor 1 - Bedroom



Dimensions: 12'2" x 13'0"
Area: 159 sq. ft
Counted as Living Area:
Yes

Heated: Yes
Finished: Yes
Enclosed: Yes
Contiguous:
Yes
Permitted: Yes
Wet Space: No
Addition: No
Conversion: No

2 Floor 1 - Swimming Pool

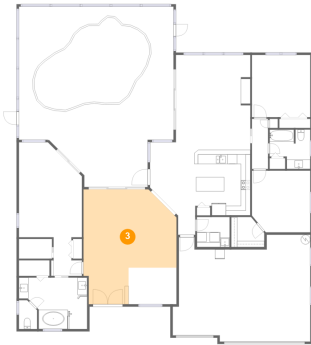


Dimensions: 22'1" x 15'11"
Area: 313 sq. ft
Counted as Living Area: No

Heated: No
Finished: No
Enclosed: No
Contiguous: Yes
Permitted: No
Wet Space: No
Addition: No
Conversion: No

732 Fringed Orchid Trail, Plantation, Venice, Sarasota County, Florida, United States, 34293

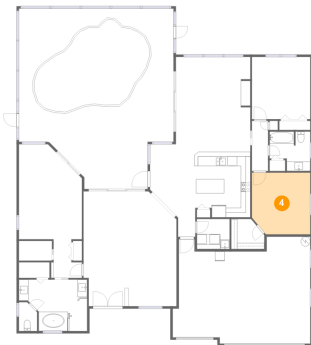
3 Floor 1 - Living Room



Dimensions: 19'5" x 24'0"
Area: 367 sq. ft
Counted as Living Area:
Yes

Heated: Yes
Finished: Yes
Enclosed: Yes
Contiguous:
Yes
Permitted: Yes
Wet Space: No
Addition: No
Conversion: No

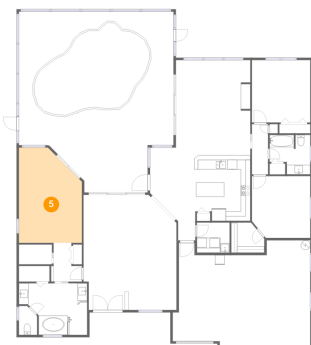
4 Floor 1 - Bedroom



Dimensions: 12'2" x 12'11"
Area: 152 sq. ft
Counted as Living Area:
Yes

Heated: Yes
Finished: Yes
Enclosed: Yes
Contiguous:
Yes
Permitted: Yes
Wet Space: No
Addition: No
Conversion: No

5 Floor 1 - Primary Bedroom

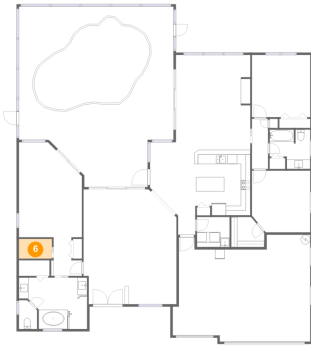


Dimensions: 13'2" x 19'10"
Area: 236 sq. ft
Counted as Living Area:
Yes

Heated: Yes
Finished: Yes
Enclosed: Yes
Contiguous:
Yes
Permitted: Yes
Wet Space: No
Addition: No
Conversion: No

732 Fringed Orchid Trail, Plantation, Venice, Sarasota County, Florida, United States, 34293

6 Floor 1 - W.i.c.



Dimensions: 6'11" x 4'2"
Area: 29 sq. ft
Counted as Living Area:
Yes

Heated: Yes
Finished: Yes
Enclosed: Yes
Contiguous:
Yes
Permitted: Yes
Wet Space: No
Addition: No
Conversion: No

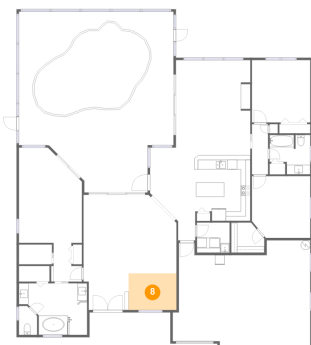
7 Floor 1 - Family Room



Dimensions: 15'7" x 18'3"
Area: 283 sq. ft
Counted as Living Area:
Yes

Heated: Yes
Finished: Yes
Enclosed: Yes
Contiguous:
Yes
Permitted: Yes
Wet Space: No
Addition: No
Conversion: No

8 Floor 1 - Dining Area

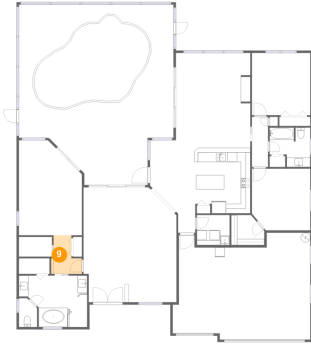


Dimensions: 10'0" x 7'8"
Area: 77 sq. ft
Counted as Living Area:
Yes

Heated: Yes
Finished: Yes
Enclosed: Yes
Contiguous:
Yes
Permitted: Yes
Wet Space: No
Addition: No
Conversion: No

732 Fringed Orchid Trail, Plantation, Venice, Sarasota County, Florida, United States, 34293

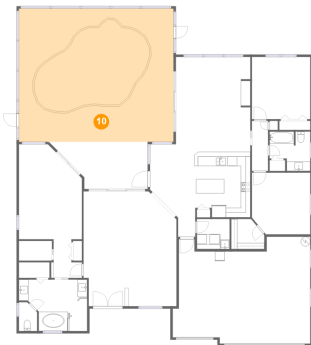
9 Floor 1 - Hall



Dimensions: 5'11" x 8'1"
Area: 39 sq. ft
Counted as Living Area:
Yes

Heated: Yes
Finished: Yes
Enclosed: Yes
Contiguous:
Yes
Permitted: Yes
Wet Space: No
Addition: No
Conversion: No

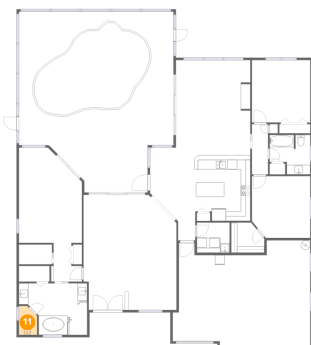
10 Floor 1 - Screened Porch



Dimensions: 32'4" x 27'10"
Area: 900 sq. ft
Counted as Living Area: No

Heated: No
Finished: Yes
Enclosed: No
Contiguous: Yes
Permitted: Yes
Wet Space: No
Addition: No
Conversion: No

11 Floor 1 - Wc

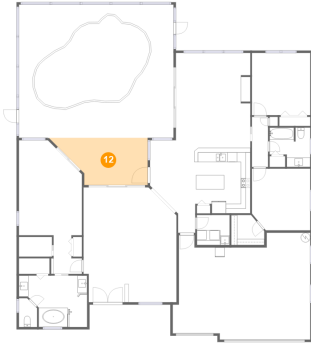


Dimensions: 3'9" x 6'0"
Area: 21 sq. ft
Counted as Living Area:
Yes

Heated: Yes
Finished: Yes
Enclosed: Yes
Contiguous:
Yes
Permitted: Yes
Wet Space: Yes
Addition: No
Conversion: No

732 Fringed Orchid Trail, Plantation, Venice, Sarasota County, Florida, United States, 34293

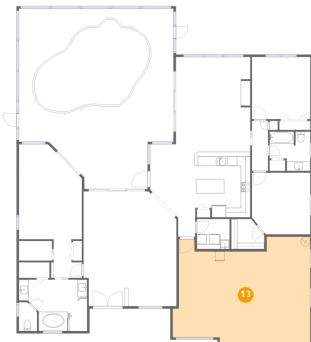
12 Floor 1 - Porch



Dimensions: 20'6" x 9'10"
Area: 158 sq. ft
Counted as Living Area: No

Heated: No
Finished: Yes
Enclosed: No
Contiguous: Yes
Permitted: Yes
Wet Space: No
Addition: No
Conversion: No

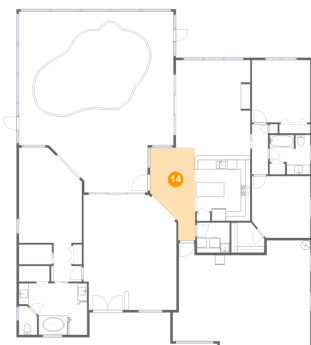
13 Floor 1 - Garage



Dimensions: 28'9" x 22'4"
Area: 562 sq. ft
Counted as Living Area: No

Heated: No
Finished: No
Enclosed: Yes
Contiguous: Yes
Permitted: Yes
Wet Space: No
Addition: No
Conversion: No

14 Floor 1 - Breakfast Nook

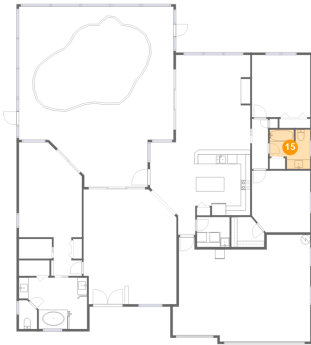


Dimensions: 9'6" x 19'4"
Area: 143 sq. ft
Counted as Living Area:
Yes

Heated: Yes
Finished: Yes
Enclosed: Yes
Contiguous:
Yes
Permitted: Yes
Wet Space: No
Addition: No
Conversion: No

732 Fringed Orchid Trail, Plantation, Venice, Sarasota County, Florida, United States, 34293

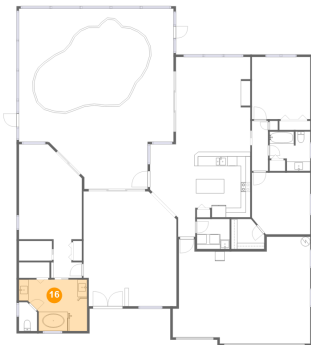
15 Floor 1 - Bath



Dimensions: 8'6" x 8'3"
Area: 60 sq. ft
Counted as Living Area:
Yes

Heated: Yes
Finished: Yes
Enclosed: Yes
Contiguous:
Yes
Permitted: Yes
Wet Space: Yes
Addition: No
Conversion: No

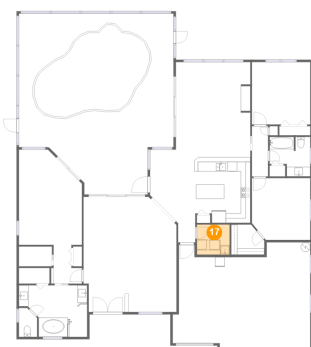
16 Floor 1 - Primary Bath



Dimensions: 14'3" x 10'9"
Area: 130 sq. ft
Counted as Living Area:
Yes

Heated: Yes
Finished: Yes
Enclosed: Yes
Contiguous:
Yes
Permitted: Yes
Wet Space: Yes
Addition: No
Conversion: No

17 Floor 1 - Laundry

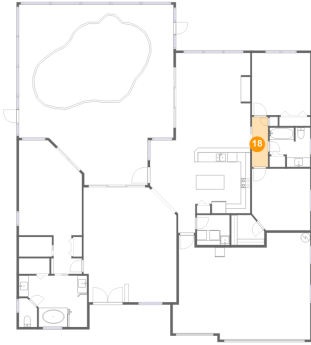


Dimensions: 6'10" x 6'4"
Area: 43 sq. ft
Counted as Living Area:
Yes

Heated: Yes
Finished: Yes
Enclosed: Yes
Contiguous:
Yes
Permitted: Yes
Wet Space: No
Addition: No
Conversion: No

732 Fringed Orchid Trail, Plantation, Venice, Sarasota County, Florida, United States, 34293

18 Floor 1 - Hall



Dimensions: 3'4" x 10'6"
Area: 35 sq. ft
Counted as Living Area:
Yes

Heated: Yes
Finished: Yes
Enclosed: Yes
Contiguous:
Yes
Permitted: Yes
Wet Space: No
Addition: No
Conversion: No

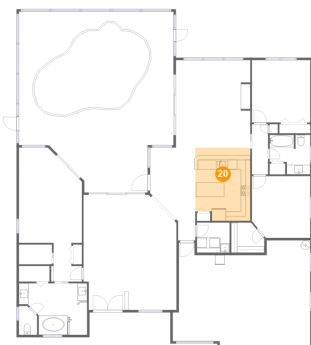
19 Floor 1 - W.i.c.



Dimensions: 6'11" x 6'4"
Area: 39 sq. ft
Counted as Living Area:
Yes

Heated: Yes
Finished: Yes
Enclosed: Yes
Contiguous:
Yes
Permitted: Yes
Wet Space: No
Addition: No
Conversion: No

20 Floor 1 - Kitchen



Dimensions: 11'6" x 15'3"
Area: 169 sq. ft
Counted as Living Area:
Yes

Heated: Yes
Finished: Yes
Enclosed: Yes
Contiguous:
Yes
Permitted: Yes
Wet Space: No
Addition: No
Conversion: No