

Home report

800 Fairwinds Terrace, Orléans North West, Orléans, Ontario, Canada, K1C 2X6




Total Area: 3358 sq. ft

Below Ground: 939 sq. ft, Floor 2: 1150 sq. ft, Floor 3: 1269 sq. ft

Excluded: Storage 164 sq. ft, Embedded window 9 sq. ft, Fireplace 8 sq. ft, Walls: 251 sq. ft

Property summary

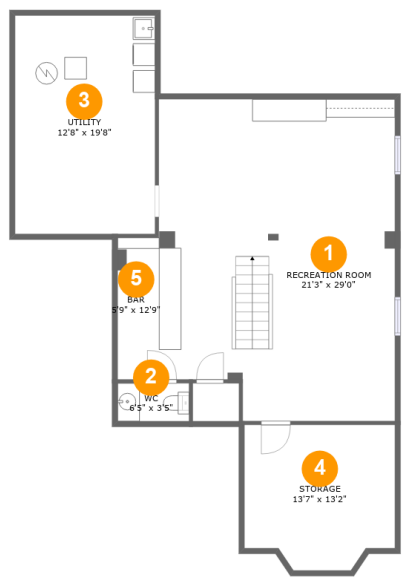
 **3**
Floors

 **4**
Bedrooms

 **2**
Bathrooms

 **2**
Half baths

800 Fairwinds Terrace, Orléans North West, Orléans, Ontario,
Canada, K1C 2X6

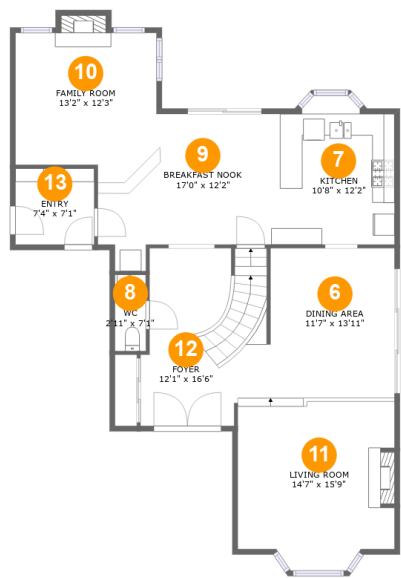


Room dimensions

Floor 1 Below ground Total:939sqft Excluded: 164sqft

#		Max Dimensions	sqft	Included
1	Recreation Room	21'3" x 29'0"	564 sq. ft	Yes
2	WC	6'5" x 3'5"	22 sq. ft	Yes
3	Utility	12'8" x 19'8"	249 sq. ft	Yes
4	Storage	13'7" x 13'2"	164 sq. ft	No
5	Bar	5'9" x 12'9"	73 sq. ft	Yes

800 Fairwinds Terrace, Orléans North West, Orléans, Ontario, Canada, K1C 2X6

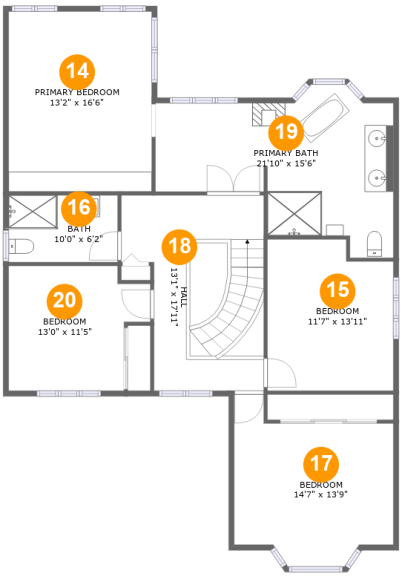


Room dimensions

Floor 2 Total:1150sqft Excluded: 17sqft

#		Max Dimensions	sqft	Included
6	Dining Area	11'7" x 13'11"	161 sq. ft	Yes
7	Kitchen	10'8" x 12'2"	129 sq. ft	Yes
8	WC	2'11" x 7'1"	20 sq. ft	Yes
9	Breakfast Nook	17'0" x 12'2"	187 sq. ft	Yes
10	Family Room	13'2" x 12'3"	168 sq. ft	Yes
11	Living Room	14'7" x 15'9"	217 sq. ft	Yes
12	Foyer	12'1" x 16'6"	179 sq. ft	Yes
13	Entry	7'4" x 7'1"	52 sq. ft	Yes

800 Fairwinds Terrace, Orléans North West, Orléans, Ontario, Canada, K1C 2X6



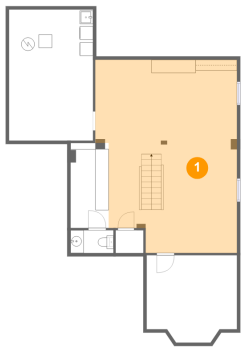
Room dimensions

Floor 3 Total:1269sqft Excluded: 0sqft

#		Max Dimensions	sqft	Included
14	Primary Bedroom	13'2" x 16'6"	217 sq. ft	Yes
15	Bedroom	11'7" x 13'11"	151 sq. ft	Yes
16	Bath	10'0" x 6'2"	61 sq. ft	Yes
17	Bedroom	14'7" x 13'9"	183 sq. ft	Yes
18	Hall	13'1" x 17'11"	199 sq. ft	Yes
19	Primary Bath	21'10" x 15'6"	239 sq. ft	Yes
20	Bedroom	13'0" x 11'5"	129 sq. ft	Yes

800 Fairwinds Terrace, Orléans North West, Orléans, Ontario,
Canada, K1C 2X6

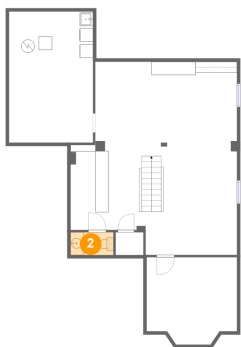
1 Floor 1 - Recreation Room



Max Dimensions: 21'3" x 29'0"
Calculated Area: 564 sq. ft
Included: Yes

Heated: Yes
Finished: Yes
Enclosed: Yes
Contiguous: Yes
Permitted: Yes
Wet space: No
Addition: No
Conversion: No

2 Floor 1 - WC

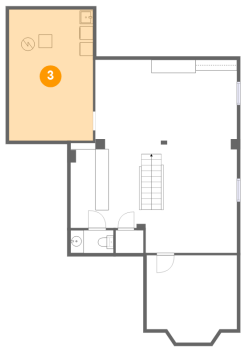


Max Dimensions: 6'5" x 3'5"
Calculated Area: 22 sq. ft
Included: Yes

Heated: Yes
Finished: Yes
Enclosed: Yes
Contiguous: Yes
Permitted: Yes
Wet space: Yes
Addition: No
Conversion: No

800 Fairwinds Terrace, Orléans North West, Orléans, Ontario,
Canada, K1C 2X6

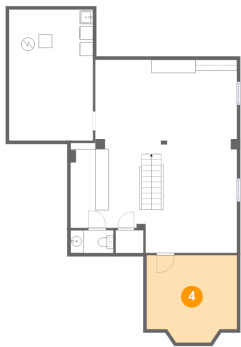
3 Floor 1 - Utility



Max Dimensions: 12'8" x 19'8"
Calculated Area: 249 sq. ft
Included: Yes

Heated: Yes
Finished: Yes
Enclosed: Yes
Contiguous: Yes
Permitted: Yes
Wet space: No
Addition: No
Conversion: No

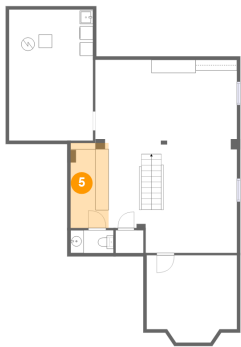
4 Floor 1 - Storage



Max Dimensions: 13'7" x 13'2"
Calculated Area: 164 sq. ft
Included: No

Heated: No
Finished: No
Enclosed: No
Contiguous: Yes
Permitted: Yes
Wet space: No
Addition: No
Conversion: No

5 Floor 1 - Bar

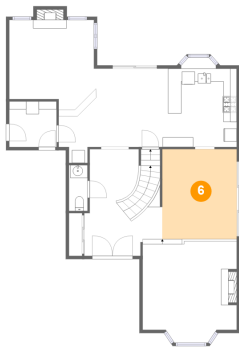


Max Dimensions: 5'9" x 12'9"
Calculated Area: 73 sq. ft
Included: Yes

Heated: Yes
Finished: Yes
Enclosed: Yes
Contiguous: Yes
Permitted: Yes
Wet space: No
Addition: No
Conversion: No

800 Fairwinds Terrace, Orléans North West, Orléans, Ontario,
Canada, K1C 2X6

6 Floor 2 - Dining Area



Max Dimensions: 11'7" x 13'11"
Calculated Area: 161 sq. ft
Included: Yes

Heated: Yes
Finished: Yes
Enclosed: Yes
Contiguous: Yes
Permitted: Yes
Wet space: No
Addition: No
Conversion: No

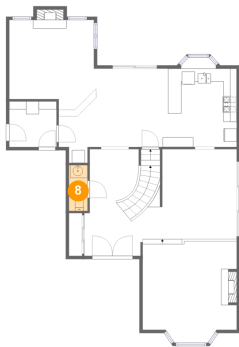
7 Floor 2 - Kitchen



Max Dimensions: 10'8" x 12'2"
Calculated Area: 129 sq. ft
Included: Yes

Heated: Yes
Finished: Yes
Enclosed: Yes
Contiguous: Yes
Permitted: Yes
Wet space: No
Addition: No
Conversion: No

8 Floor 2 - WC

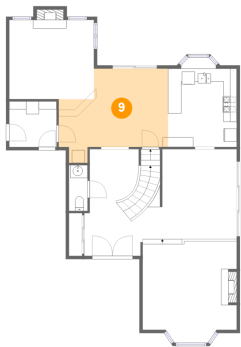


Max Dimensions: 2'11" x 7'1"
Calculated Area: 20 sq. ft
Included: Yes

Heated: Yes
Finished: Yes
Enclosed: Yes
Contiguous: Yes
Permitted: Yes
Wet space: Yes
Addition: No
Conversion: No

800 Fairwinds Terrace, Orléans North West, Orléans, Ontario,
Canada, K1C 2X6

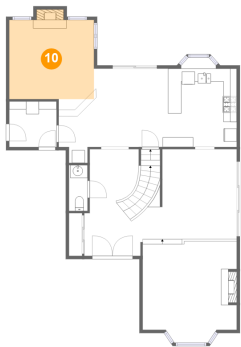
9 Floor 2 - Breakfast Nook



Max Dimensions: 17'0" x 12'2"
Calculated Area: 187 sq. ft
Included: Yes

Heated: Yes
Finished: Yes
Enclosed: Yes
Contiguous: Yes
Permitted: Yes
Wet space: No
Addition: No
Conversion: No

10 Floor 2 - Family Room



Max Dimensions: 13'2" x 12'3"
Calculated Area: 168 sq. ft
Included: Yes

Heated: Yes
Finished: Yes
Enclosed: Yes
Contiguous: Yes
Permitted: Yes
Wet space: No
Addition: No
Conversion: No

11 Floor 2 - Living Room



Max Dimensions: 14'7" x 15'9"
Calculated Area: 217 sq. ft
Included: Yes

Heated: Yes
Finished: Yes
Enclosed: Yes
Contiguous: Yes
Permitted: Yes
Wet space: No
Addition: No
Conversion: No

800 Fairwinds Terrace, Orléans North West, Orléans, Ontario,
Canada, K1C 2X6

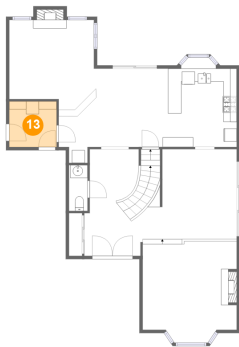
12 Floor 2 - Foyer



Max Dimensions: 12'1" x 16'6"
Calculated Area: 179 sq. ft
Included: Yes

Heated: Yes
Finished: Yes
Enclosed: Yes
Contiguous: Yes
Permitted: Yes
Wet space: No
Addition: No
Conversion: No

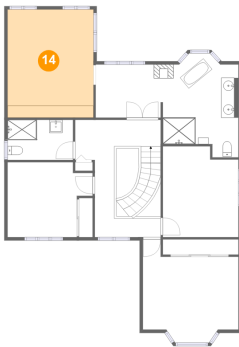
13 Floor 2 - Entry



Max Dimensions: 7'4" x 7'1"
Calculated Area: 52 sq. ft
Included: Yes

Heated: Yes
Finished: Yes
Enclosed: Yes
Contiguous: Yes
Permitted: Yes
Wet space: No
Addition: No
Conversion: No

14 Floor 3 - Primary Bedroom

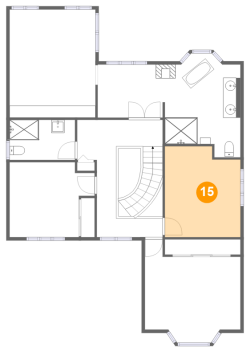


Max Dimensions: 13'2" x 16'6"
Calculated Area: 217 sq. ft
Included: Yes

Heated: Yes
Finished: Yes
Enclosed: Yes
Contiguous: Yes
Permitted: Yes
Wet space: No
Addition: No
Conversion: No

800 Fairwinds Terrace, Orléans North West, Orléans, Ontario,
Canada, K1C 2X6

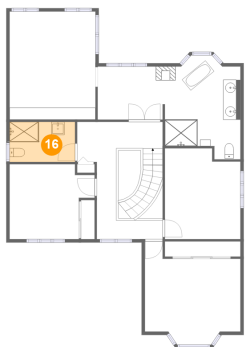
15 Floor 3 - Bedroom



Max Dimensions: 11'7" x 13'11"
Calculated Area: 151 sq. ft
Included: Yes

Heated: Yes
Finished: Yes
Enclosed: Yes
Contiguous: Yes
Permitted: Yes
Wet space: No
Addition: No
Conversion: No

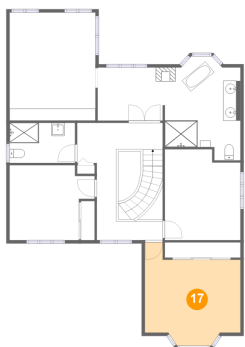
16 Floor 3 - Bath



Max Dimensions: 10'0" x 6'2"
Calculated Area: 61 sq. ft
Included: Yes

Heated: Yes
Finished: Yes
Enclosed: Yes
Contiguous: Yes
Permitted: Yes
Wet space: Yes
Addition: No
Conversion: No

17 Floor 3 - Bedroom

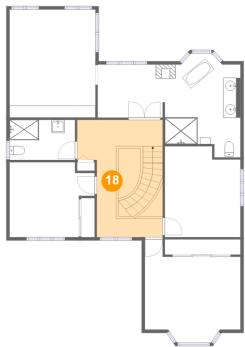


Max Dimensions: 14'7" x 13'9"
Calculated Area: 183 sq. ft
Included: Yes

Heated: Yes
Finished: Yes
Enclosed: Yes
Contiguous: Yes
Permitted: Yes
Wet space: No
Addition: No
Conversion: No

800 Fairwinds Terrace, Orléans North West, Orléans, Ontario,
Canada, K1C 2X6

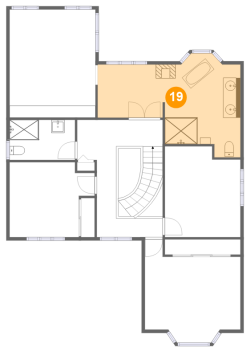
18 Floor 3 - Hall



Max Dimensions: 13'1" x 17'11"
Calculated Area: 199 sq. ft
Included: Yes

Heated: Yes
Finished: Yes
Enclosed: Yes
Contiguous: Yes
Permitted: Yes
Wet space: No
Addition: No
Conversion: No

19 Floor 3 - Primary Bath



Max Dimensions: 21'10" x 15'6"
Calculated Area: 239 sq. ft
Included: Yes

Heated: Yes
Finished: Yes
Enclosed: Yes
Contiguous: Yes
Permitted: Yes
Wet space: Yes
Addition: No
Conversion: No

20 Floor 3 - Bedroom



Max Dimensions: 13'0" x 11'5"
Calculated Area: 129 sq. ft
Included: Yes

Heated: Yes
Finished: Yes
Enclosed: Yes
Contiguous: Yes
Permitted: Yes
Wet space: No
Addition: No
Conversion: No