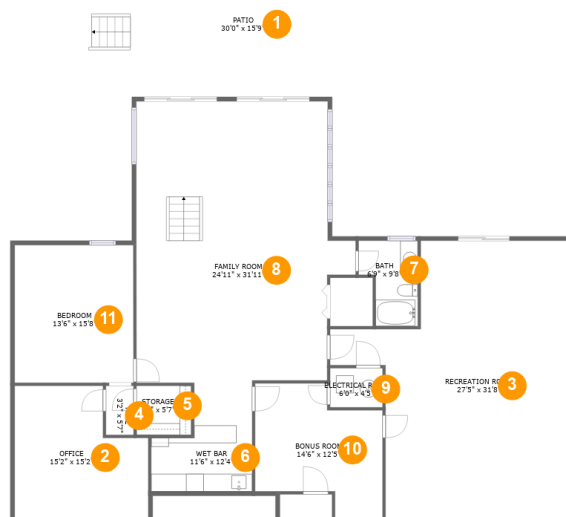


7090 Highfields Farm Trail, Highfields Farm Estates, Roanoke, Roanoke County, Virginia, United States,



Room dimensions

Floor 1

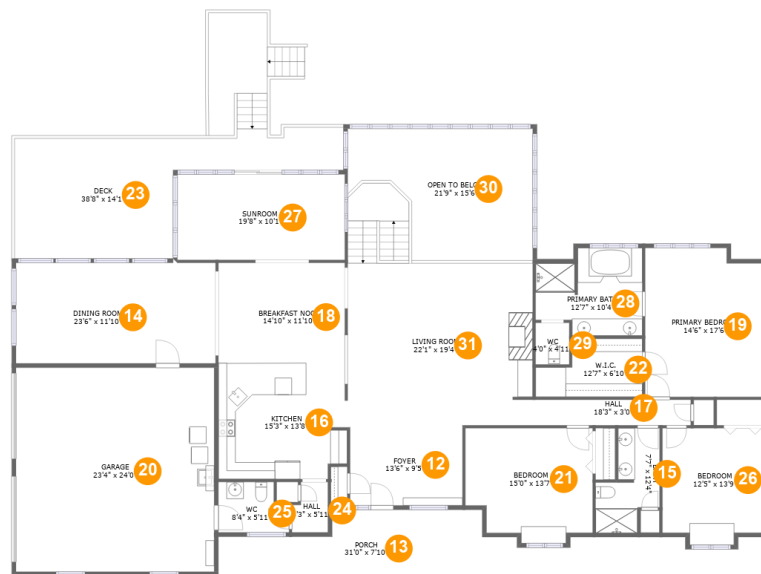
Total sqft: 2891 Living area: 2349

#		Dimensions	sqft	Counted as living area
1	Outdoor	30'0" x 15'9"	480 sq. ft	No
2	Office	15'2" x 15'2"	200 sq. ft	Yes
3	Recreation Room	27'5" x 31'8"	655 sq. ft	Yes
4	Hall	3'2" x 5'7"	18 sq. ft	Yes
5	Storage	6'3" x 5'7"	35 sq. ft	No
6	Bar	11'6" x 12'4"	111 sq. ft	Yes
7	Bath	6'9" x 9'8"	54 sq. ft	Yes
8	Living Room	24'11" x 31'11"	705 sq. ft	Yes
9	Room	6'0" x 4'5"	27 sq. ft	No
10	Room	14'6" x 12'5"	176 sq. ft	Yes
11	Bedroom	13'6" x 15'8"	211 sq. ft	Yes

Scan captured on Fri, 13 Dec 2024 21:33:15 GMT

Information is calculated by Cubicasa technology deemed highly reliable but not guaranteed.

7090 Highfields Farm Trail, Highfields Farm Estates, Roanoke, Roanoke County, Virginia, United States,



Room dimensions

Floor 2

Total sqft: 4265 Living area: 2724

#		Dimensions	sqft	Counted as living area
12	Entry	13'6" x 9'5"	125 sq. ft	Yes
13	Outdoor	31'0" x 7'10"	200 sq. ft	No
14	Dining Room	23'6" x 11'10"	278 sq. ft	Yes
15	Bath	7'7" x 12'4"	67 sq. ft	Yes
16	Kitchen	15'3" x 13'8"	203 sq. ft	Yes
17	Hall	18'3" x 3'0"	55 sq. ft	Yes
18	Nook	14'10" x 11'10"	177 sq. ft	Yes
19	Bedroom	14'6" x 17'6"	245 sq. ft	Yes
20	Garage	23'4" x 24'0"	560 sq. ft	No
21	Bedroom	15'0" x 13'7"	183 sq. ft	Yes
22	Cl	12'7" x 6'10"	72 sq. ft	Yes

Scan captured on Fri, 13 Dec 2024 21:33:15 GMT

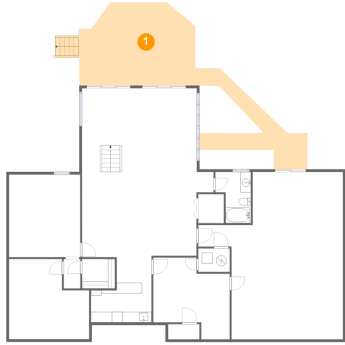
Information is calculated by Cubicasa technology deemed highly reliable but not guaranteed.

**7090 Highfields Farm Trail, Highfields Farm Estates,
Roanoke, Roanoke County, Virginia, United States,**

#		Dimensions	sqft	Counted as living area
23	Outdoor	38'8" x 14'1"	462 sq. ft	No
24	Hall	4'3" x 5'11"	22 sq. ft	Yes
25	Bath	8'4" x 5'11"	45 sq. ft	Yes
26	Bedroom	12'5" x 13'9"	160 sq. ft	Yes
27	Room	19'8" x 10'1"	198 sq. ft	Yes
28	Bath	12'7" x 10'4"	112 sq. ft	Yes
29	Bath	4'0" x 4'11"	19 sq. ft	Yes
30	Open To Below	21'9" x 15'6"	271 sq. ft	No
31	Living Room	22'1" x 19'4"	489 sq. ft	Yes

7090 Highfields Farm Trail, Highfields Farm Estates, Roanoke, Roanoke County, Virginia, United States,

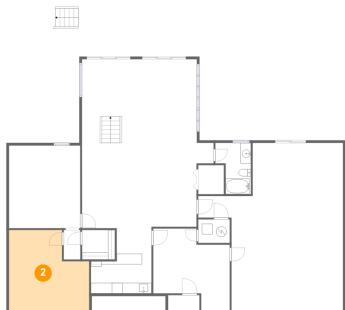
1 Floor 1 - Outdoor



Dimensions: 30'0" x 15'9"
Area: 480 sq. ft
Counted as living area: No

Heated: No
Finished: Yes
Enclosed: No
Contiguous: Yes
Permitted: Yes
Wet space: No
Addition: No
Conversion: No

2 Floor 1 - Office

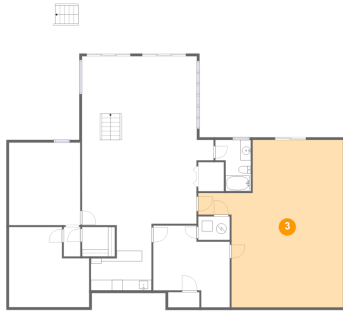


Dimensions: 15'2" x 15'2"
Area: 200 sq. ft
Counted as living area: Yes

Heated: Yes
Finished: Yes
Enclosed: Yes
Contiguous: Yes
Permitted: Yes
Wet space: No
Addition: No
Conversion: No

7090 Highfields Farm Trail, Highfields Farm Estates, Roanoke, Roanoke County, Virginia, United States,

3 Floor 1 - Recreation Room



Dimensions: 27'5" x 31'8"
Area: 655 sq. ft
Counted as living area: Yes

Heated: Yes
Finished: Yes
Enclosed: Yes
Contiguous: Yes
Permitted: Yes
Wet space: No
Addition: No
Conversion: No

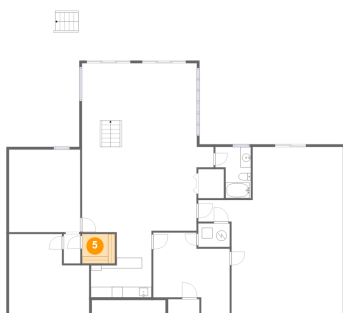
4 Floor 1 - Hall



Dimensions: 3'2" x 5'7"
Area: 18 sq. ft
Counted as living area: Yes

Heated: Yes
Finished: Yes
Enclosed: Yes
Contiguous: Yes
Permitted: Yes
Wet space: No
Addition: No
Conversion: No

5 Floor 1 - Storage

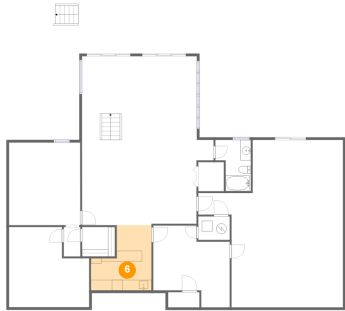


Dimensions: 6'3" x 5'7"
Area: 35 sq. ft
Counted as living area: No

Heated: No
Finished: No
Enclosed: No
Contiguous: Yes
Permitted: Yes
Wet space: No
Addition: No
Conversion: No

7090 Highfields Farm Trail, Highfields Farm Estates, Roanoke, Roanoke County, Virginia, United States,

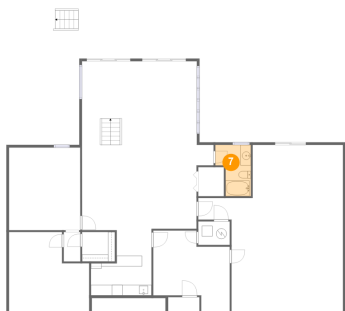
6 Floor 1 - Bar



Dimensions: 11'6" x 12'4"
Area: 111 sq. ft
Counted as living area: Yes

Heated: Yes
Finished: Yes
Enclosed: Yes
Contiguous: Yes
Permitted: Yes
Wet space: No
Addition: No
Conversion: No

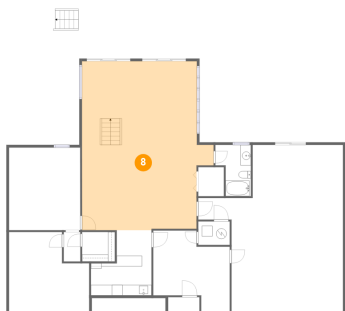
7 Floor 1 - Bath



Dimensions: 6'9" x 9'8"
Area: 54 sq. ft
Counted as living area: Yes

Heated: Yes
Finished: Yes
Enclosed: Yes
Contiguous: Yes
Permitted: Yes
Wet space: Yes
Addition: No
Conversion: No

8 Floor 1 - Living Room

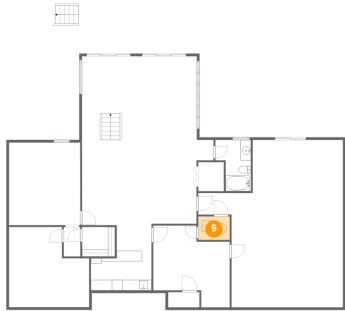


Dimensions: 24'11" x 31'11"
Area: 705 sq. ft
Counted as living area: Yes

Heated: Yes
Finished: Yes
Enclosed: Yes
Contiguous: Yes
Permitted: Yes
Wet space: No
Addition: No
Conversion: No

7090 Highfields Farm Trail, Highfields Farm Estates, Roanoke, Roanoke County, Virginia, United States,

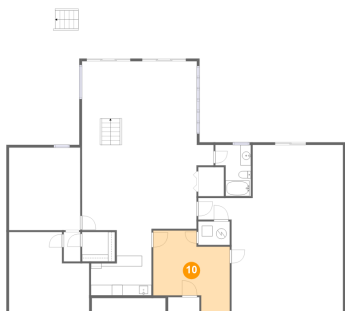
9 Floor 1 - Room



Dimensions: 6'0" x 4'5"
Area: 27 sq. ft
Counted as living area: No

Heated: No
Finished: No
Enclosed: Yes
Contiguous: Yes
Permitted: Yes
Wet space: No
Addition: No
Conversion: No

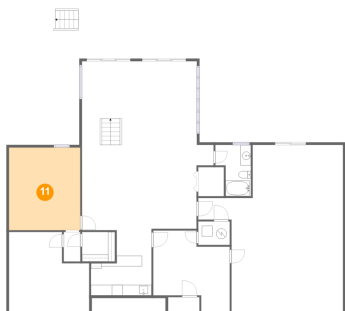
10 Floor 1 - Room



Dimensions: 14'6" x 12'5"
Area: 176 sq. ft
Counted as living area: Yes

Heated: Yes
Finished: Yes
Enclosed: Yes
Contiguous: Yes
Permitted: Yes
Wet space: No
Addition: No
Conversion: No

11 Floor 1 - Bedroom



Dimensions: 13'6" x 15'8"
Area: 211 sq. ft
Counted as living area: Yes

Heated: Yes
Finished: Yes
Enclosed: Yes
Contiguous: Yes
Permitted: Yes
Wet space: No
Addition: No
Conversion: No

7090 Highfields Farm Trail, Highfields Farm Estates, Roanoke, Roanoke County, Virginia, United States,

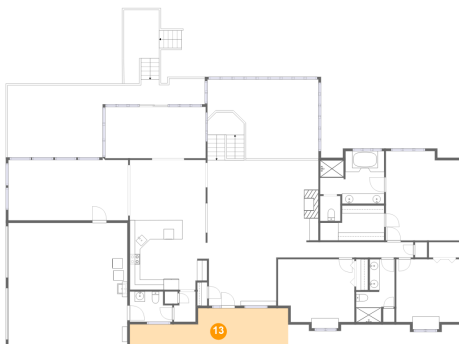
12 Floor 2 - Entry



Dimensions: 13'6" x 9'5"
Area: 125 sq. ft
Counted as living area: Yes

Heated: Yes
Finished: Yes
Enclosed: Yes
Contiguous: Yes
Permitted: Yes
Wet space: No
Addition: No
Conversion: No

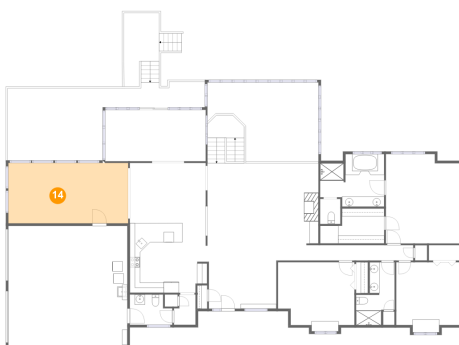
13 Floor 2 - Outdoor



Dimensions: 31'0" x 7'10"
Area: 200 sq. ft
Counted as living area: No

Heated: No
Finished: Yes
Enclosed: No
Contiguous: Yes
Permitted: Yes
Wet space: No
Addition: No
Conversion: No

14 Floor 2 - Dining Room



Dimensions: 23'6" x 11'10"
Area: 278 sq. ft
Counted as living area: Yes

Heated: Yes
Finished: Yes
Enclosed: Yes
Contiguous: Yes
Permitted: Yes
Wet space: No
Addition: No
Conversion: No

7090 Highfields Farm Trail, Highfields Farm Estates, Roanoke, Roanoke County, Virginia, United States,

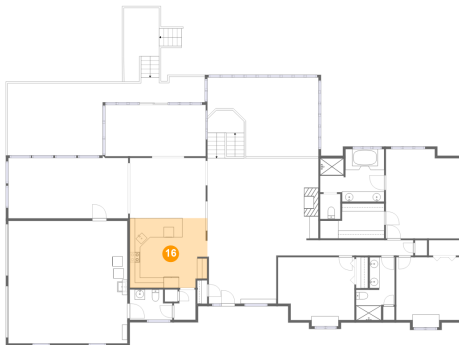
15 Floor 2 - Bath



Dimensions: 7'7" x 12'4"
Area: 67 sq. ft
Counted as living area: Yes

Heated: Yes
Finished: Yes
Enclosed: Yes
Contiguous: Yes
Permitted: Yes
Wet space: Yes
Addition: No
Conversion: No

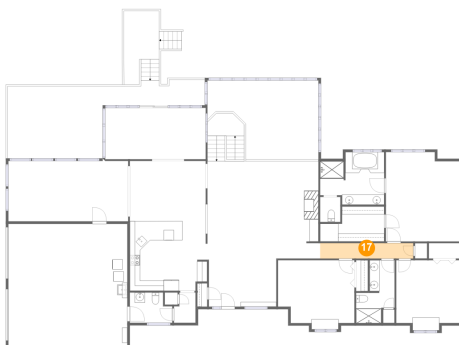
16 Floor 2 - Kitchen



Dimensions: 15'3" x 13'8"
Area: 203 sq. ft
Counted as living area: Yes

Heated: Yes
Finished: Yes
Enclosed: Yes
Contiguous: Yes
Permitted: Yes
Wet space: No
Addition: No
Conversion: No

17 Floor 2 - Hall



Dimensions: 18'3" x 3'0"
Area: 55 sq. ft
Counted as living area: Yes

Heated: Yes
Finished: Yes
Enclosed: Yes
Contiguous: Yes
Permitted: Yes
Wet space: No
Addition: No
Conversion: No

7090 Highfields Farm Trail, Highfields Farm Estates, Roanoke, Roanoke County, Virginia, United States,

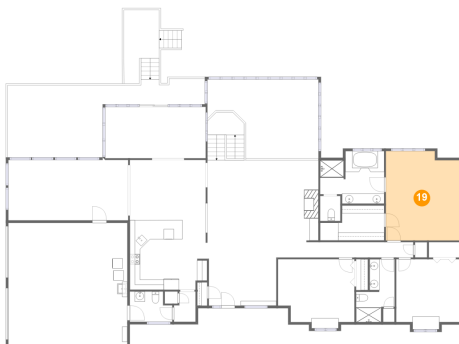
18 Floor 2 - Nook



Dimensions: 14'10" x 11'10"
Area: 177 sq. ft
Counted as living area: Yes

Heated: Yes
Finished: Yes
Enclosed: Yes
Contiguous: Yes
Permitted: Yes
Wet space: No
Addition: No
Conversion: No

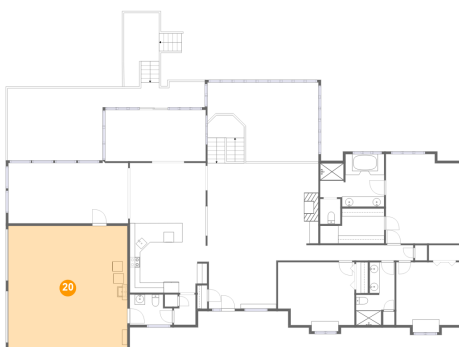
19 Floor 2 - Bedroom



Dimensions: 14'6" x 17'6"
Area: 245 sq. ft
Counted as living area: Yes

Heated: Yes
Finished: Yes
Enclosed: Yes
Contiguous: Yes
Permitted: Yes
Wet space: No
Addition: No
Conversion: No

20 Floor 2 - Garage



Dimensions: 23'4" x 24'0"
Area: 560 sq. ft
Counted as living area: No

Heated: No
Finished: No
Enclosed: Yes
Contiguous: Yes
Permitted: Yes
Wet space: No
Addition: No
Conversion: No

7090 Highfields Farm Trail, Highfields Farm Estates, Roanoke, Roanoke County, Virginia, United States,

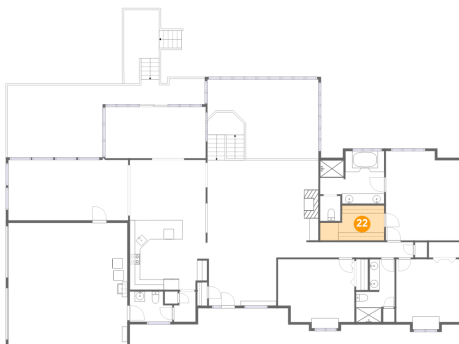
21 Floor 2 - Bedroom



Dimensions: 15'0" x 13'7"
Area: 183 sq. ft
Counted as living area: Yes

Heated: Yes
Finished: Yes
Enclosed: Yes
Contiguous: Yes
Permitted: Yes
Wet space: No
Addition: No
Conversion: No

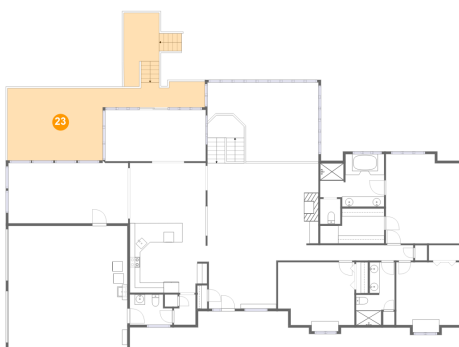
22 Floor 2 - Cl



Dimensions: 12'7" x 6'10"
Area: 72 sq. ft
Counted as living area: Yes

Heated: Yes
Finished: Yes
Enclosed: Yes
Contiguous: Yes
Permitted: Yes
Wet space: No
Addition: No
Conversion: No

23 Floor 2 - Outdoor

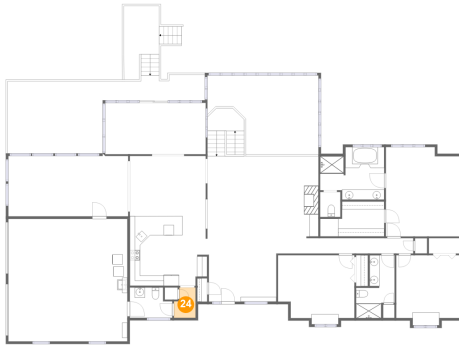


Dimensions: 38'8" x 14'1"
Area: 462 sq. ft
Counted as living area: No

Heated: No
Finished: Yes
Enclosed: No
Contiguous: Yes
Permitted: Yes
Wet space: No
Addition: No
Conversion: No

7090 Highfields Farm Trail, Highfields Farm Estates, Roanoke, Roanoke County, Virginia, United States,

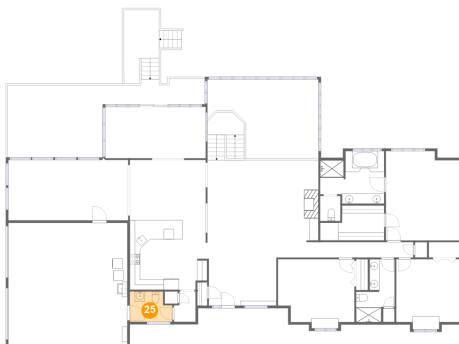
24 Floor 2 - Hall



Dimensions: 4'3" x 5'11"
Area: 22 sq. ft
Counted as living area: Yes

Heated: Yes
Finished: Yes
Enclosed: Yes
Contiguous: Yes
Permitted: Yes
Wet space: No
Addition: No
Conversion: No

25 Floor 2 - Bath



Dimensions: 8'4" x 5'11"
Area: 45 sq. ft
Counted as living area: Yes

Heated: Yes
Finished: Yes
Enclosed: Yes
Contiguous: Yes
Permitted: Yes
Wet space: Yes
Addition: No
Conversion: No

26 Floor 2 - Bedroom



Dimensions: 12'5" x 13'9"
Area: 160 sq. ft
Counted as living area: Yes

Heated: Yes
Finished: Yes
Enclosed: Yes
Contiguous: Yes
Permitted: Yes
Wet space: No
Addition: No
Conversion: No

7090 Highfields Farm Trail, Highfields Farm Estates, Roanoke, Roanoke County, Virginia, United States,

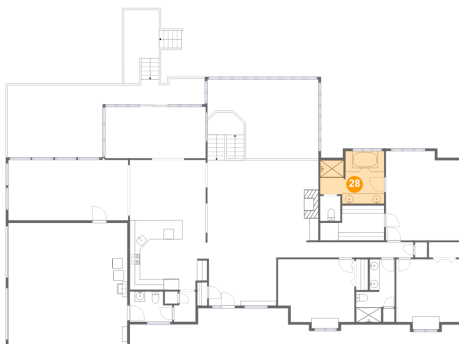
27 Floor 2 - Room



Dimensions: 19'8" x 10'1"
Area: 198 sq. ft
Counted as living area: Yes

Heated: Yes
Finished: Yes
Enclosed: Yes
Contiguous: Yes
Permitted: Yes
Wet space: No
Addition: No
Conversion: No

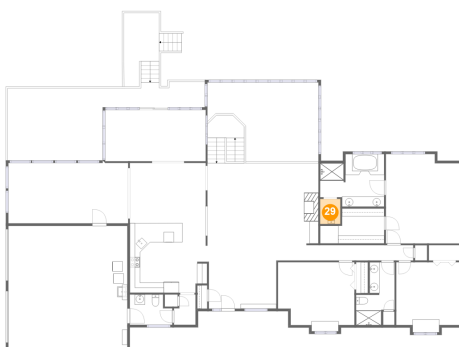
28 Floor 2 - Bath



Dimensions: 12'7" x 10'4"
Area: 112 sq. ft
Counted as living area: Yes

Heated: Yes
Finished: Yes
Enclosed: Yes
Contiguous: Yes
Permitted: Yes
Wet space: Yes
Addition: No
Conversion: No

29 Floor 2 - Bath



Dimensions: 4'0" x 4'11"
Area: 19 sq. ft
Counted as living area: Yes

Heated: Yes
Finished: Yes
Enclosed: Yes
Contiguous: Yes
Permitted: Yes
Wet space: Yes
Addition: No
Conversion: No

7090 Highfields Farm Trail, Highfields Farm Estates, Roanoke, Roanoke County, Virginia, United States,

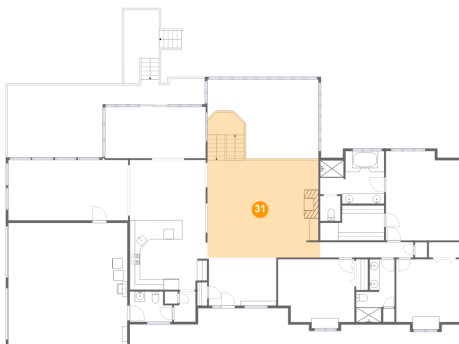
30 Floor 2 - Open To Below



Dimensions: 21'9" x 15'6"
Area: 271 sq. ft
Counted as living area: No

Heated: No
Finished: No
Enclosed: No
Contiguous: Yes
Permitted: No
Wet space: No
Addition: No
Conversion: No

31 Floor 2 - Living Room



Dimensions: 22'1" x 19'4"
Area: 489 sq. ft
Counted as living area: Yes

Heated: Yes
Finished: Yes
Enclosed: Yes
Contiguous: Yes
Permitted: Yes
Wet space: No
Addition: No
Conversion: No