



# 785 Bay Esplanade, Mandalay, Clearwater Beach, Pinellas County, Florida, United States, 33767



## Property summary

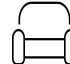
 **1** Garages

 **3** Bedrooms

 **3** Bathrooms

 **1** Half baths

 **2** Floors

 **2,347** Gross living area sqft

 **4,177** Total sqft

# 785 Bay Esplanade, Mandalay, Clearwater Beach, Pinellas County, Florida, United States, 33767



## Room dimensions

Floor 1

Total sqft: 2881

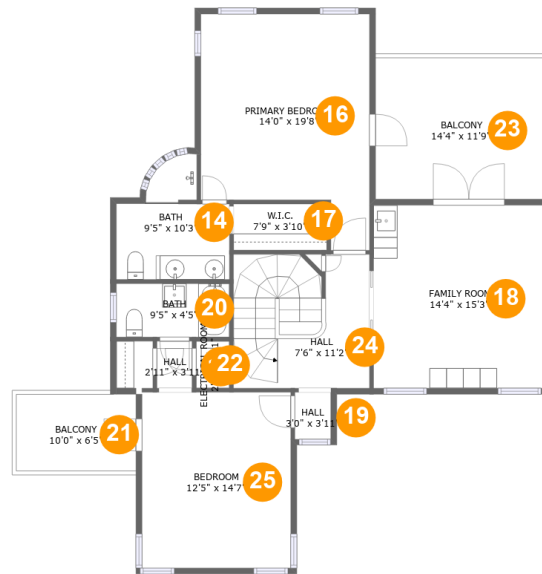
Living area: 1293

#		Dimensions	sqft	Counted as living area
1	Bedroom	14'3" x 8'8"	140 sq. ft	Yes
2	Hall	3'3" x 6'3"	20 sq. ft	Yes
3	Screened Porch	14'2" x 11'11"	169 sq. ft	No
4	Patio	50'0" x 41'9"	948 sq. ft	No
5	Sunroom	18'7" x 12'1"	184 sq. ft	Yes
6	Kitchen	21'1" x 15'1"	283 sq. ft	Yes
7	Bath	8'3" x 6'5"	43 sq. ft	Yes
8	Porch	6'6" x 26'2"	169 sq. ft	No
9	Living Room	26'0" x 15'3"	372 sq. ft	Yes
10	Laundry	10'3" x 5'2"	53 sq. ft	Yes
11	Swimming Pool	16'0" x 20'10"	226 sq. ft	No

**785 Bay Esplanade, Mandalay, Clearwater Beach,  
Pinellas County, Florida, United States, 33767**

#		Dimensions	sqft	Counted as living area
12	WC	4'9" x 5'8"	27 sq. ft	Yes
13	Garage	20'9" x 23'4"	464 sq. ft	No

# 785 Bay Esplanade, Mandalay, Clearwater Beach, Pinellas County, Florida, United States, 33767



## Room dimensions

Floor 2

Total sqft: 1296 Living area: 1054

#		Dimensions	sqft	Counted as living area
14	Bath	9'5" x 10'3"	73 sq. ft	Yes
15	Hall	2'11" x 3'11"	11 sq. ft	Yes
16	Primary Bedroom	14'0" x 19'8"	230 sq. ft	Yes
17	W.I.C.	7'9" x 3'10"	30 sq. ft	Yes
18	Family Room	14'4" x 15'3"	218 sq. ft	Yes
19	Hall	3'0" x 3'11"	12 sq. ft	Yes
20	Bath	9'5" x 4'5"	42 sq. ft	Yes
21	Balcony	10'0" x 6'5"	63 sq. ft	No
22	Electrical Room	2'9" x 3'11"	11 sq. ft	No
23	Balcony	14'4" x 11'9"	168 sq. ft	No
24	Hall	7'6" x 11'2"	123 sq. ft	Yes

**785 Bay Esplanade, Mandalay, Clearwater Beach,  
Pinellas County, Florida, United States, 33767**

#		Dimensions	sqft	Counted as living area
25	Bedroom	12'5" x 14'7"	181 sq. ft	Yes

# 785 Bay Esplanade, Mandalay, Clearwater Beach, Pinellas County, Florida, United States, 33767

## 1 Floor 1 - Bedroom



**Dimensions:** 14'3" x 8'8"  
**Area:** 140 sq. ft  
**Counted as living area:** Yes

**Heated:** Yes  
**Finished:** Yes  
**Enclosed:** Yes  
**Contiguous:** Yes  
**Permitted:** Yes  
**Wet space:** No  
**Addition:** No  
**Conversion:** No

## 2 Floor 1 - Hall



**Dimensions:** 3'3" x 6'3"  
**Area:** 20 sq. ft  
**Counted as living area:** Yes

**Heated:** Yes  
**Finished:** Yes  
**Enclosed:** Yes  
**Contiguous:** Yes  
**Permitted:** Yes  
**Wet space:** No  
**Addition:** No  
**Conversion:** No

# 785 Bay Esplanade, Mandalay, Clearwater Beach, Pinellas County, Florida, United States, 33767

## 3 Floor 1 - Screened Porch



**Dimensions:** 14'2" x 11'11"  
**Area:** 169 sq. ft  
**Counted as living area:** No

**Heated:** No  
**Finished:** Yes  
**Enclosed:** No  
**Contiguous:** Yes  
**Permitted:** Yes  
**Wet space:** No  
**Addition:** No  
**Conversion:** No

## 4 Floor 1 - Patio



**Dimensions:** 50'0" x 41'9"  
**Area:** 948 sq. ft  
**Counted as living area:** No

**Heated:** No  
**Finished:** Yes  
**Enclosed:** No  
**Contiguous:** Yes  
**Permitted:** Yes  
**Wet space:** No  
**Addition:** No  
**Conversion:** No

## 5 Floor 1 - Sunroom



**Dimensions:** 18'7" x 12'1"  
**Area:** 184 sq. ft  
**Counted as living area:** Yes

**Heated:** Yes  
**Finished:** Yes  
**Enclosed:** Yes  
**Contiguous:** Yes  
**Permitted:** Yes  
**Wet space:** No  
**Addition:** No  
**Conversion:** No

**785 Bay Esplanade, Mandalay, Clearwater Beach,  
Pinellas County, Florida, United States, 33767**

**6 Floor 1 - Kitchen**



**Dimensions:** 21'1" x 15'1"  
**Area:** 283 sq. ft  
**Counted as living area:** Yes

**Heated:** Yes  
**Finished:** Yes  
**Enclosed:** Yes  
**Contiguous:** Yes  
**Permitted:** Yes  
**Wet space:** No  
**Addition:** No  
**Conversion:** No

**7 Floor 1 - Bath**



**Dimensions:** 8'3" x 6'5"  
**Area:** 43 sq. ft  
**Counted as living area:** Yes

**Heated:** Yes  
**Finished:** Yes  
**Enclosed:** Yes  
**Contiguous:** Yes  
**Permitted:** Yes  
**Wet space:** Yes  
**Addition:** No  
**Conversion:** No

**8 Floor 1 - Porch**



**Dimensions:** 6'6" x 26'2"  
**Area:** 169 sq. ft  
**Counted as living area:** No

**Heated:** No  
**Finished:** Yes  
**Enclosed:** No  
**Contiguous:** Yes  
**Permitted:** Yes  
**Wet space:** No  
**Addition:** No  
**Conversion:** No



**785 Bay Esplanade, Mandalay, Clearwater Beach,  
Pinellas County, Florida, United States, 33767**

**9 Floor 1 - Living Room**



**Dimensions:** 26'0" x 15'3"  
**Area:** 372 sq. ft  
**Counted as living area:** Yes

**Heated:** Yes  
**Finished:** Yes  
**Enclosed:** Yes  
**Contiguous:** Yes  
**Permitted:** Yes  
**Wet space:** No  
**Addition:** No  
**Conversion:** No

**10 Floor 1 - Laundry**



**Dimensions:** 10'3" x 5'2"  
**Area:** 53 sq. ft  
**Counted as living area:** Yes

**Heated:** Yes  
**Finished:** Yes  
**Enclosed:** Yes  
**Contiguous:** Yes  
**Permitted:** Yes  
**Wet space:** No  
**Addition:** No  
**Conversion:** No

**11 Floor 1 - Swimming Pool**



**Dimensions:** 16'0" x 20'10"  
**Area:** 226 sq. ft  
**Counted as living area:** No

**Heated:** No  
**Finished:** No  
**Enclosed:** No  
**Contiguous:** Yes  
**Permitted:** No  
**Wet space:** No  
**Addition:** No  
**Conversion:** No

**785 Bay Esplanade, Mandalay, Clearwater Beach,  
Pinellas County, Florida, United States, 33767**

**12 Floor 1 - WC**



Dimensions: 4'9" x 5'8"  
Area: 27 sq. ft  
Counted as living area: Yes

Heated: Yes  
Finished: Yes  
Enclosed: Yes  
Contiguous: Yes  
Permitted: Yes  
Wet space: Yes  
Addition: No  
Conversion: No

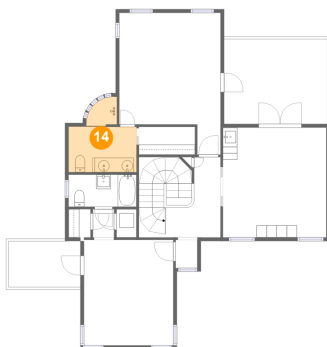
**13 Floor 1 - Garage**



Dimensions: 20'9" x 23'4"  
Area: 464 sq. ft  
Counted as living area: No

Heated: No  
Finished: No  
Enclosed: Yes  
Contiguous: Yes  
Permitted: Yes  
Wet space: No  
Addition: No  
Conversion: No

**14 Floor 2 - Bath**

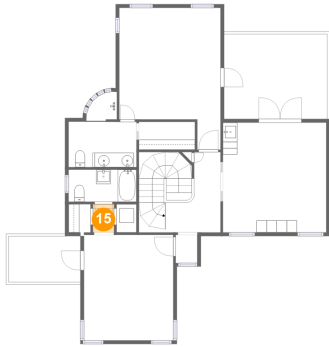


Dimensions: 9'5" x 10'3"  
Area: 73 sq. ft  
Counted as living area: Yes

Heated: Yes  
Finished: Yes  
Enclosed: Yes  
Contiguous: Yes  
Permitted: Yes  
Wet space: Yes  
Addition: No  
Conversion: No

**785 Bay Esplanade, Mandalay, Clearwater Beach,  
Pinellas County, Florida, United States, 33767**

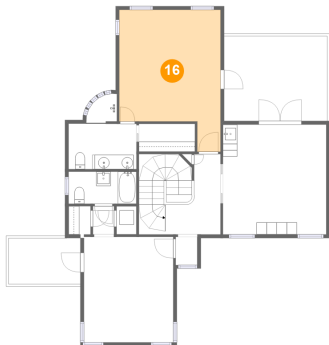
**15 Floor 2 - Hall**



**Dimensions:** 2'11" x 3'11"  
**Area:** 11 sq. ft  
**Counted as living area:** Yes

**Heated:** Yes  
**Finished:** Yes  
**Enclosed:** Yes  
**Contiguous:** Yes  
**Permitted:** Yes  
**Wet space:** No  
**Addition:** No  
**Conversion:** No

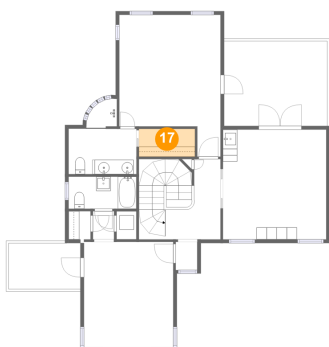
**16 Floor 2 - Primary Bedroom**



**Dimensions:** 14'0" x 19'8"  
**Area:** 230 sq. ft  
**Counted as living area:** Yes

**Heated:** Yes  
**Finished:** Yes  
**Enclosed:** Yes  
**Contiguous:** Yes  
**Permitted:** Yes  
**Wet space:** No  
**Addition:** No  
**Conversion:** No

**17 Floor 2 - W.I.C.**

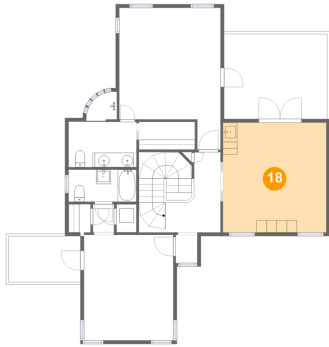


**Dimensions:** 7'9" x 3'10"  
**Area:** 30 sq. ft  
**Counted as living area:** Yes

**Heated:** Yes  
**Finished:** Yes  
**Enclosed:** Yes  
**Contiguous:** Yes  
**Permitted:** Yes  
**Wet space:** No  
**Addition:** No  
**Conversion:** No

# 785 Bay Esplanade, Mandalay, Clearwater Beach, Pinellas County, Florida, United States, 33767

## 18 Floor 2 - Family Room



Dimensions: 14'4" x 15'3"  
Area: 218 sq. ft  
Counted as living area: Yes

Heated: Yes  
Finished: Yes  
Enclosed: Yes  
Contiguous: Yes  
Permitted: Yes  
Wet space: No  
Addition: No  
Conversion: No

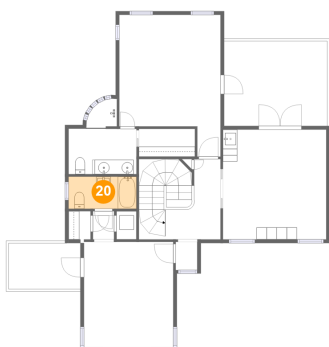
## 19 Floor 2 - Hall



Dimensions: 3'0" x 3'11"  
Area: 12 sq. ft  
Counted as living area: Yes

Heated: Yes  
Finished: Yes  
Enclosed: Yes  
Contiguous: Yes  
Permitted: Yes  
Wet space: No  
Addition: No  
Conversion: No

## 20 Floor 2 - Bath

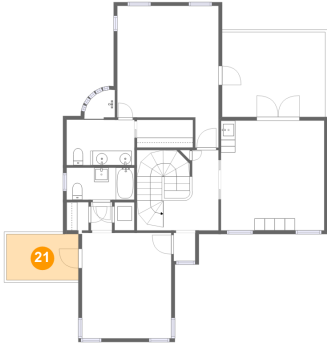


Dimensions: 9'5" x 4'5"  
Area: 42 sq. ft  
Counted as living area: Yes

Heated: Yes  
Finished: Yes  
Enclosed: Yes  
Contiguous: Yes  
Permitted: Yes  
Wet space: Yes  
Addition: No  
Conversion: No

**785 Bay Esplanade, Mandalay, Clearwater Beach,  
Pinellas County, Florida, United States, 33767**

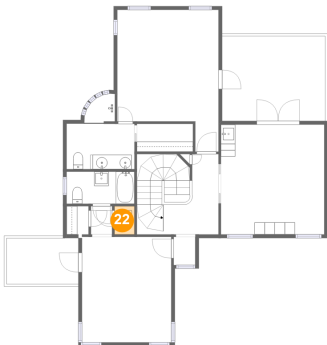
**21 Floor 2 - Balcony**



Dimensions: 10'0" x 6'5"  
Area: 63 sq. ft  
Counted as living area: No

Heated: No  
Finished: Yes  
Enclosed: No  
Contiguous: Yes  
Permitted: Yes  
Wet space: No  
Addition: No  
Conversion: No

**22 Floor 2 - Electrical Room**



Dimensions: 2'9" x 3'11"  
Area: 11 sq. ft  
Counted as living area: No

Heated: No  
Finished: No  
Enclosed: Yes  
Contiguous: Yes  
Permitted: Yes  
Wet space: No  
Addition: No  
Conversion: No

**23 Floor 2 - Balcony**

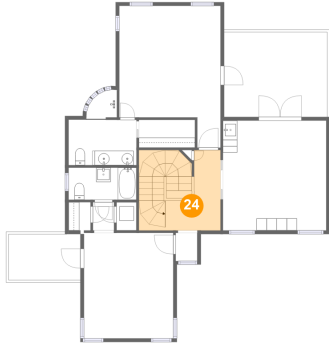


Dimensions: 14'4" x 11'9"  
Area: 168 sq. ft  
Counted as living area: No

Heated: No  
Finished: Yes  
Enclosed: No  
Contiguous: Yes  
Permitted: Yes  
Wet space: No  
Addition: No  
Conversion: No

**785 Bay Esplanade, Mandalay, Clearwater Beach,  
Pinellas County, Florida, United States, 33767**

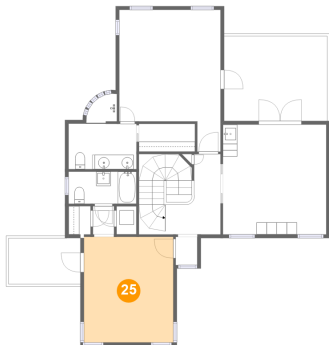
**24 Floor 2 - Hall**



**Dimensions: 7'6" x 11'2"**  
**Area: 123 sq. ft**  
**Counted as living area: Yes**

**Heated: Yes**  
**Finished: Yes**  
**Enclosed: Yes**  
**Contiguous: Yes**  
**Permitted: Yes**  
**Wet space: No**  
**Addition: No**  
**Conversion: No**

**25 Floor 2 - Bedroom**



**Dimensions: 12'5" x 14'7"**  
**Area: 181 sq. ft**  
**Counted as living area: Yes**

**Heated: Yes**  
**Finished: Yes**  
**Enclosed: Yes**  
**Contiguous: Yes**  
**Permitted: Yes**  
**Wet space: No**  
**Addition: No**  
**Conversion: No**