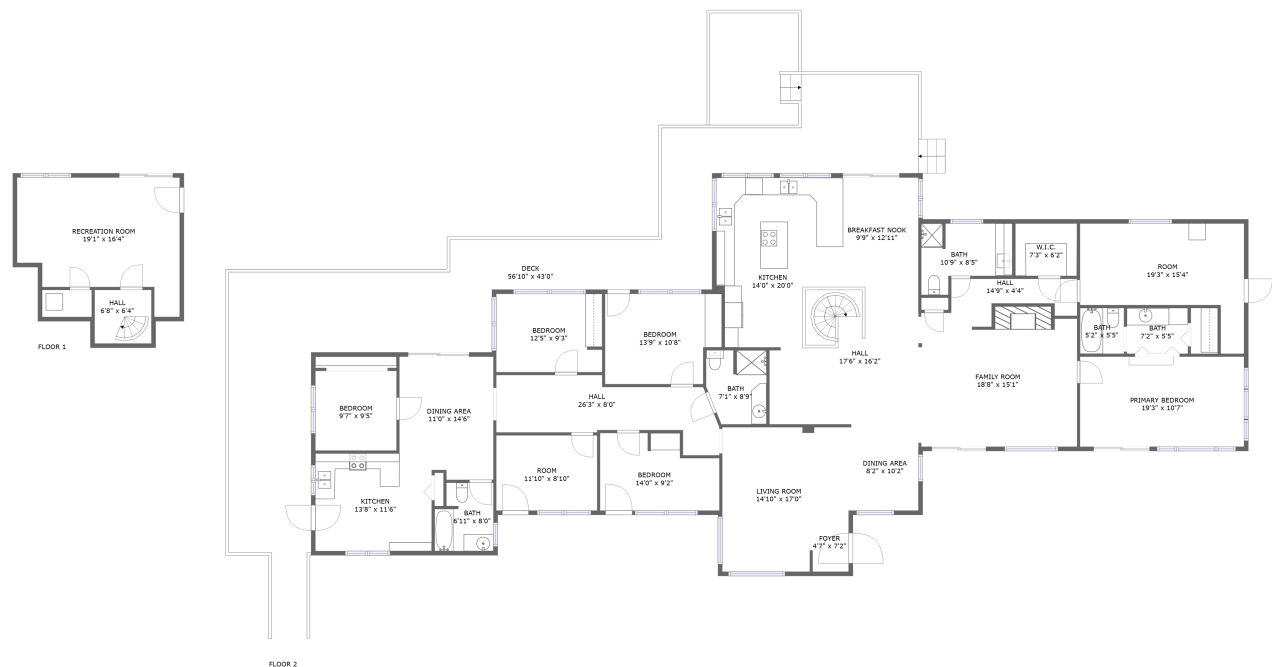


Home report

16780 Southwest Muddy Valley Road, McMinnville, Yamhill
County, Oregon, United States, 97128



Total Area: 3283 sq. ft
Floor 1: 297 sq. ft, Floor 2: 2986 sq. ft
Excluded: Undefined 19 sq. ft, Room 201 sq. ft, Deck 1171 sq. ft, Walls: 199 sq. ft

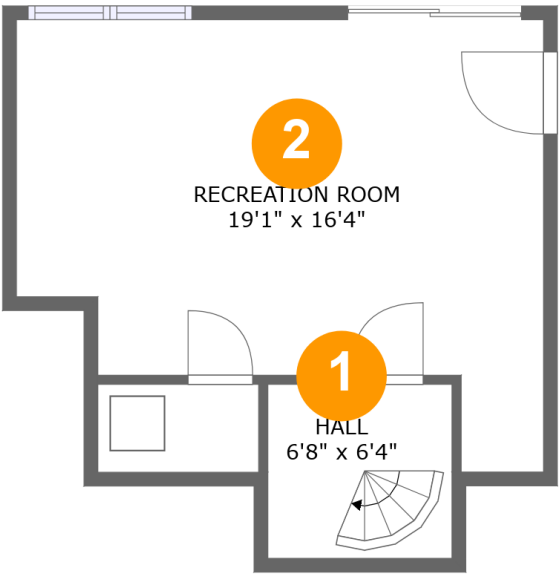
Property summary

 **2** Floors

 **5** Bedrooms

 **4** Bathrooms

16780 Southwest Muddy Valley Road, McMinnville, Yamhill
County, Oregon, United States, 97128



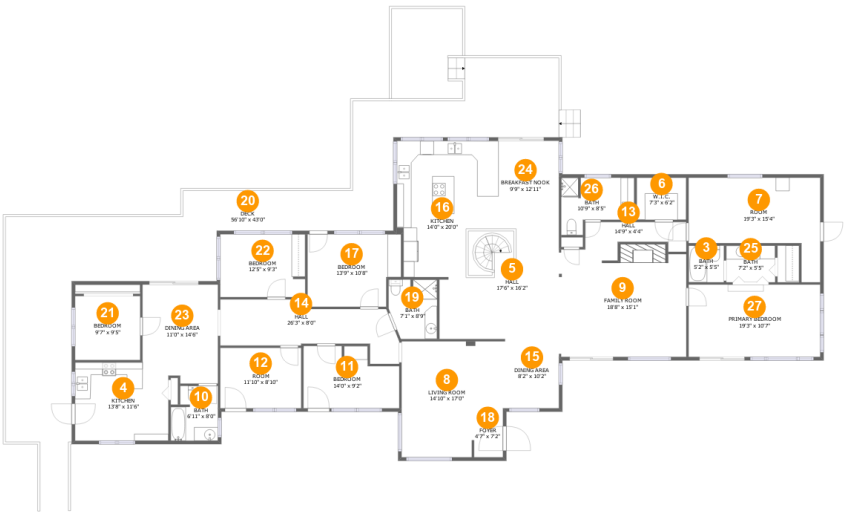
Room dimensions

Floor 1 Total:297sqft Excluded: 19sqft

#		Max Dimensions	sqft	Included
1	Hall	6'8" x 6'4"	42 sq. ft	Yes
2	Recreation Room	19'1" x 16'4"	248 sq. ft	Yes

Home report

16780 Southwest Muddy Valley Road, McMinnville, Yamhill
County, Oregon, United States, 97128



Room dimensions

Floor 2 Total:2986sqft Excluded: 1372sqft

#		Max Dimensions	sqft	Included
3	Bath	5'2" x 5'5"	28 sq. ft	Yes
4	Kitchen	13'8" x 11'6"	157 sq. ft	Yes
5	Hall	17'6" x 16'2"	255 sq. ft	Yes
6	W.I.C.	7'3" x 6'2"	45 sq. ft	Yes
7	Room	19'3" x 15'4"	201 sq. ft	No
8	Living Room	14'10" x 17'0"	220 sq. ft	Yes
9	Family Room	18'8" x 15'1"	295 sq. ft	Yes
10	Bath	6'11" x 8'0"	51 sq. ft	Yes
11	Bedroom	14'0" x 9'2"	114 sq. ft	Yes
12	Room	11'10" x 8'10"	105 sq. ft	Yes
13	Hall	14'9" x 4'4"	52 sq. ft	Yes

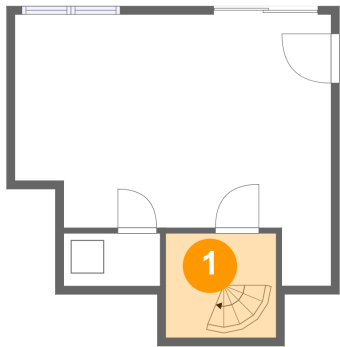
Home report

**16780 Southwest Muddy Valley Road, McMinnville, Yamhill
County, Oregon, United States, 97128**

#		Max Dimensions	sqft	Included
14	Hall	26'3" x 8'0"	162 sq. ft	Yes
15	Dining Area	8'2" x 10'2"	83 sq. ft	Yes
16	Kitchen	14'0" x 20'0"	246 sq. ft	Yes
17	Bedroom	13'9" x 10'8"	136 sq. ft	Yes
18	Foyer	4'7" x 7'2"	32 sq. ft	Yes
19	Bath	7'1" x 8'9"	57 sq. ft	Yes
20	Deck	56'10" x 43'0"	1171 sq. ft	No
21	Bedroom	9'7" x 9'5"	90 sq. ft	Yes
22	Bedroom	12'5" x 9'3"	114 sq. ft	Yes
23	Dining Area	11'0" x 14'6"	146 sq. ft	Yes
24	Breakfast Nook	9'9" x 12'11"	126 sq. ft	Yes
25	Bath	7'2" x 5'5"	39 sq. ft	Yes
26	Bath	10'9" x 8'5"	72 sq. ft	Yes
27	Primary Bedroom	19'3" x 10'7"	204 sq. ft	Yes

16780 Southwest Muddy Valley Road, McMinnville, Yamhill
County, Oregon, United States, 97128

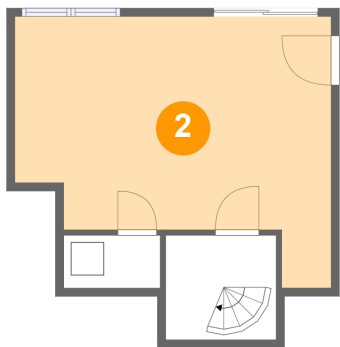
1 Floor 1 - Hall



Max Dimensions: 6'8" x 6'4"
Calculated Area: 42 sq. ft
Included: No

Heated: Yes
Finished: Yes
Enclosed: Yes
Contiguous: No
Permitted: Yes
Wet space: No
Addition: No
Conversion: No

2 Floor 1 - Recreation Room



Max Dimensions: 19'1" x 16'4"
Calculated Area: 248 sq. ft
Included: No

Heated: Yes
Finished: Yes
Enclosed: Yes
Contiguous: No
Permitted: Yes
Wet space: No
Addition: No
Conversion: No

16780 Southwest Muddy Valley Road, McMinnville, Yamhill
County, Oregon, United States, 97128

3 Floor 2 - Bath



Max Dimensions: 5'2" x 5'5"
Calculated Area: 28 sq. ft
Included: Yes

Heated: Yes
Finished: Yes
Enclosed: Yes
Contiguous: Yes
Permitted: Yes
Wet space: Yes
Addition: No
Conversion: No

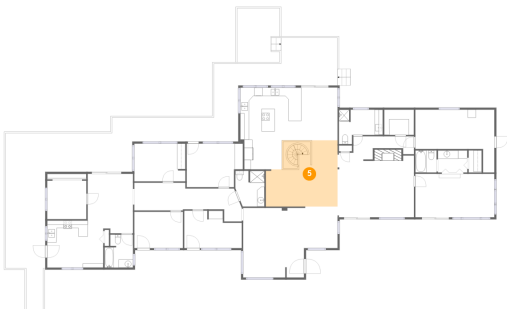
4 Floor 2 - Kitchen



Max Dimensions: 13'8" x 11'6"
Calculated Area: 157 sq. ft
Included: Yes

Heated: Yes
Finished: Yes
Enclosed: Yes
Contiguous: Yes
Permitted: Yes
Wet space: No
Addition: No
Conversion: No

5 Floor 2 - Hall



Max Dimensions: 17'6" x 16'2"
Calculated Area: 255 sq. ft
Included: Yes

Heated: Yes
Finished: Yes
Enclosed: Yes
Contiguous: Yes
Permitted: Yes
Wet space: No
Addition: No
Conversion: No

16780 Southwest Muddy Valley Road, McMinnville, Yamhill
County, Oregon, United States, 97128

6 Floor 2 - W.I.C.



Max Dimensions: 7'3" x 6'2"
Calculated Area: 45 sq. ft
Included: Yes

Heated: Yes
Finished: Yes
Enclosed: Yes
Contiguous: Yes
Permitted: Yes
Wet space: No
Addition: No
Conversion: No

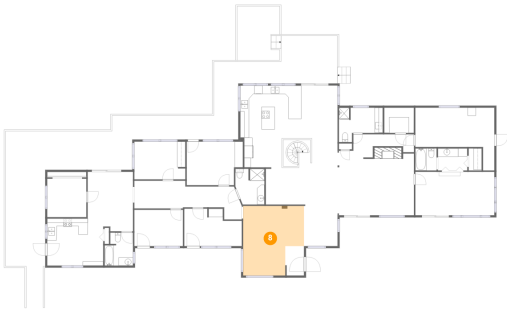
7 Floor 2 - Room



Max Dimensions: 19'3" x 15'4"
Calculated Area: 201 sq. ft
Included: No

Heated: Yes
Finished: No
Enclosed: Yes
Contiguous: Yes
Permitted: Yes
Wet space: No
Addition: No
Conversion: No

8 Floor 2 - Living Room

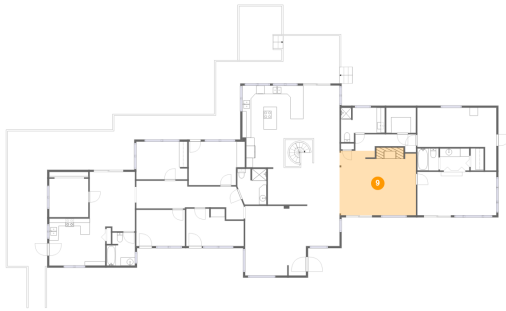


Max Dimensions: 14'10" x 17'0"
Calculated Area: 220 sq. ft
Included: Yes

Heated: Yes
Finished: Yes
Enclosed: Yes
Contiguous: Yes
Permitted: Yes
Wet space: No
Addition: No
Conversion: No

16780 Southwest Muddy Valley Road, McMinnville, Yamhill
County, Oregon, United States, 97128

9 Floor 2 - Family Room



Max Dimensions: 18'8" x
15'1"
Calculated Area: 295 sq. ft
Included: Yes

Heated: Yes
Finished: Yes
Enclosed: Yes
Contiguous:
Yes
Permitted: Yes
Wet space: No
Addition: No
Conversion: No

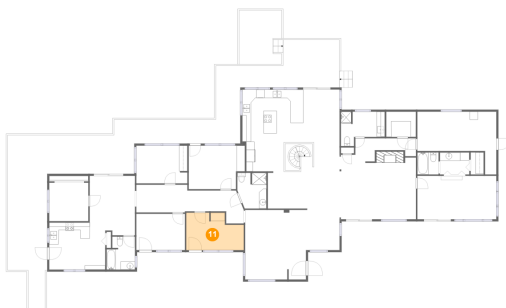
10 Floor 2 - Bath



Max Dimensions: 6'11" x
8'0"
Calculated Area: 51 sq. ft
Included: Yes

Heated: Yes
Finished: Yes
Enclosed: Yes
Contiguous:
Yes
Permitted: Yes
Wet space: Yes
Addition: No
Conversion: No

11 Floor 2 - Bedroom

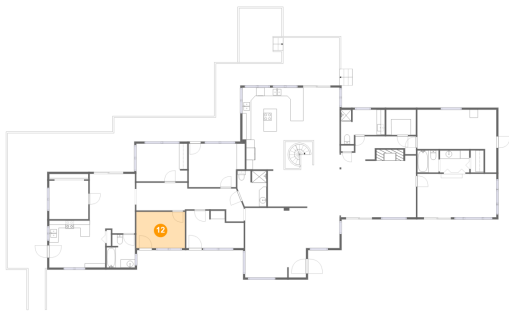


Max Dimensions: 14'0" x
9'2"
Calculated Area: 114 sq. ft
Included: Yes

Heated: Yes
Finished: Yes
Enclosed: Yes
Contiguous:
Yes
Permitted: Yes
Wet space: No
Addition: No
Conversion: No

16780 Southwest Muddy Valley Road, McMinnville, Yamhill
County, Oregon, United States, 97128

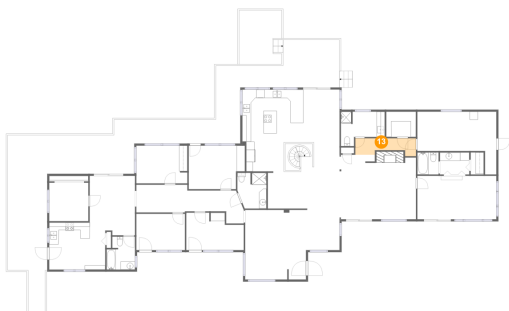
12 Floor 2 - Room



Max Dimensions: 11'10" x 8'10"
Calculated Area: 105 sq. ft
Included: Yes

Heated: Yes
Finished: Yes
Enclosed: Yes
Contiguous: Yes
Permitted: Yes
Wet space: No
Addition: No
Conversion: No

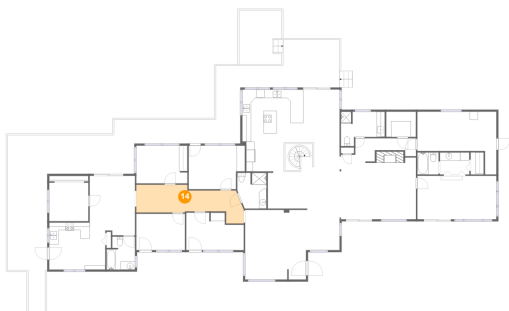
13 Floor 2 - Hall



Max Dimensions: 14'9" x 4'4"
Calculated Area: 52 sq. ft
Included: Yes

Heated: Yes
Finished: Yes
Enclosed: Yes
Contiguous: Yes
Permitted: Yes
Wet space: No
Addition: No
Conversion: No

14 Floor 2 - Hall



Max Dimensions: 26'3" x 8'0"
Calculated Area: 162 sq. ft
Included: Yes

Heated: Yes
Finished: Yes
Enclosed: Yes
Contiguous: Yes
Permitted: Yes
Wet space: No
Addition: No
Conversion: No

16780 Southwest Muddy Valley Road, McMinnville, Yamhill
County, Oregon, United States, 97128

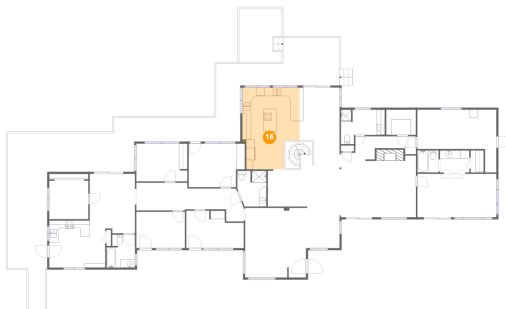
15 Floor 2 - Dining Area



Max Dimensions: 8'2" x
10'2"
Calculated Area: 83 sq. ft
Included: Yes

Heated: Yes
Finished: Yes
Enclosed: Yes
Contiguous:
Yes
Permitted: Yes
Wet space: No
Addition: No
Conversion: No

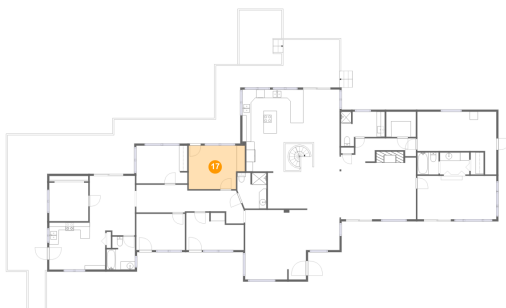
16 Floor 2 - Kitchen



Max Dimensions: 14'0" x
20'0"
Calculated Area: 246 sq. ft
Included: Yes

Heated: Yes
Finished: Yes
Enclosed: Yes
Contiguous:
Yes
Permitted: Yes
Wet space: No
Addition: No
Conversion: No

17 Floor 2 - Bedroom



Max Dimensions: 13'9" x
10'8"
Calculated Area: 136 sq. ft
Included: Yes

Heated: Yes
Finished: Yes
Enclosed: Yes
Contiguous:
Yes
Permitted: Yes
Wet space: No
Addition: No
Conversion: No

16780 Southwest Muddy Valley Road, McMinnville, Yamhill
County, Oregon, United States, 97128

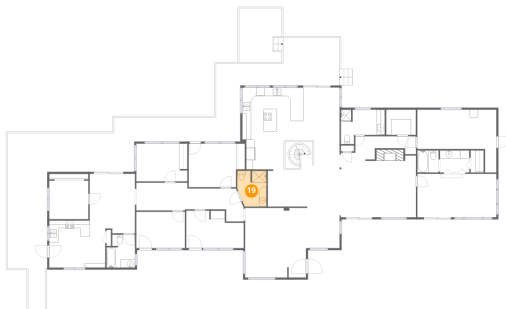
18 Floor 2 - Foyer



Max Dimensions: 4'7" x 7'2"
Calculated Area: 32 sq. ft
Included: Yes

Heated: Yes
Finished: Yes
Enclosed: Yes
Contiguous: Yes
Permitted: Yes
Wet space: No
Addition: No
Conversion: No

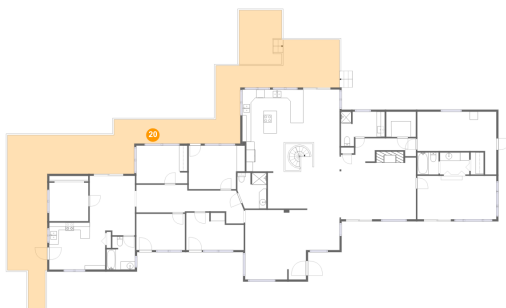
19 Floor 2 - Bath



Max Dimensions: 7'1" x 8'9"
Calculated Area: 57 sq. ft
Included: Yes

Heated: Yes
Finished: Yes
Enclosed: Yes
Contiguous: Yes
Permitted: Yes
Wet space: Yes
Addition: No
Conversion: No

20 Floor 2 - Deck



Max Dimensions: 56'10" x
43'0"
Calculated Area: 1171 sq. ft
Included: No

Heated: No
Finished: Yes
Enclosed: No
Contiguous:
Yes
Permitted: Yes
Wet space: No
Addition: No
Conversion: No

16780 Southwest Muddy Valley Road, McMinnville, Yamhill
County, Oregon, United States, 97128

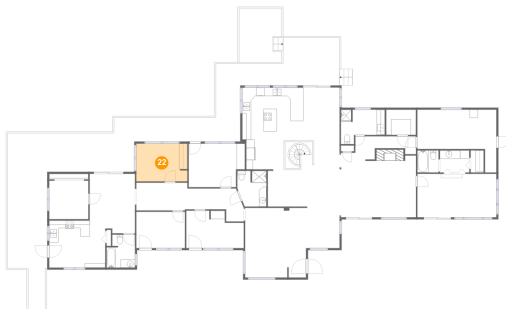
21 Floor 2 - Bedroom



Max Dimensions: 9'7" x 9'5"
Calculated Area: 90 sq. ft
Included: Yes

Heated: Yes
Finished: Yes
Enclosed: Yes
Contiguous: Yes
Permitted: Yes
Wet space: No
Addition: No
Conversion: No

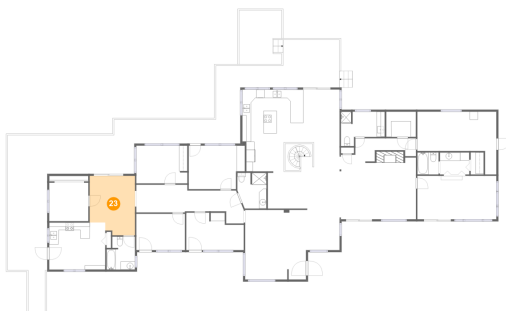
22 Floor 2 - Bedroom



Max Dimensions: 12'5" x 9'3"
Calculated Area: 114 sq. ft
Included: Yes

Heated: Yes
Finished: Yes
Enclosed: Yes
Contiguous: Yes
Permitted: Yes
Wet space: No
Addition: No
Conversion: No

23 Floor 2 - Dining Area

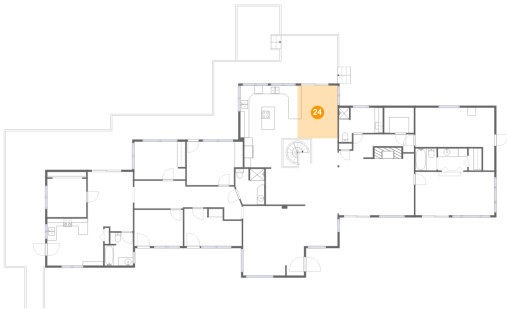


Max Dimensions: 11'0" x 14'6"
Calculated Area: 146 sq. ft
Included: Yes

Heated: Yes
Finished: Yes
Enclosed: Yes
Contiguous: Yes
Permitted: Yes
Wet space: No
Addition: No
Conversion: No

16780 Southwest Muddy Valley Road, McMinnville, Yamhill
County, Oregon, United States, 97128

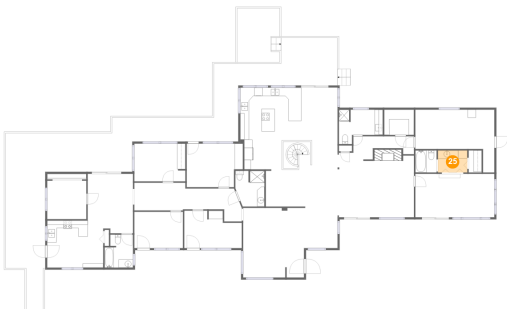
24 Floor 2 - Breakfast Nook



Max Dimensions: 9'9" x 12'11"
Calculated Area: 126 sq. ft
Included: Yes

Heated: Yes
Finished: Yes
Enclosed: Yes
Contiguous: Yes
Permitted: Yes
Wet space: No
Addition: No
Conversion: No

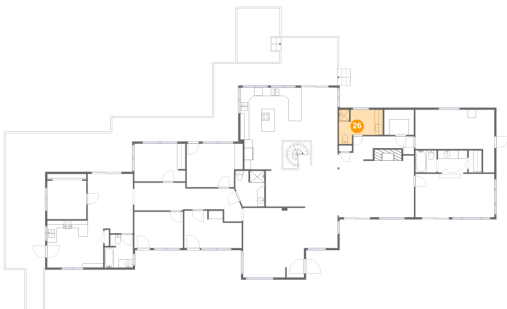
25 Floor 2 - Bath



Max Dimensions: 7'2" x 5'5"
Calculated Area: 39 sq. ft
Included: Yes

Heated: Yes
Finished: Yes
Enclosed: Yes
Contiguous: Yes
Permitted: Yes
Wet space: Yes
Addition: No
Conversion: No

26 Floor 2 - Bath



Max Dimensions: 10'9" x 8'5"
Calculated Area: 72 sq. ft
Included: Yes

Heated: Yes
Finished: Yes
Enclosed: Yes
Contiguous: Yes
Permitted: Yes
Wet space: Yes
Addition: No
Conversion: No

16780 Southwest Muddy Valley Road, McMinnville, Yamhill
County, Oregon, United States, 97128

27 Floor 2 - Primary Bedroom



Max Dimensions: 19'3" x 10'7"
Calculated Area: 204 sq. ft
Included: Yes

Heated: Yes
Finished: Yes
Enclosed: Yes
Contiguous: Yes
Permitted: Yes
Wet space: No
Addition: No
Conversion: No