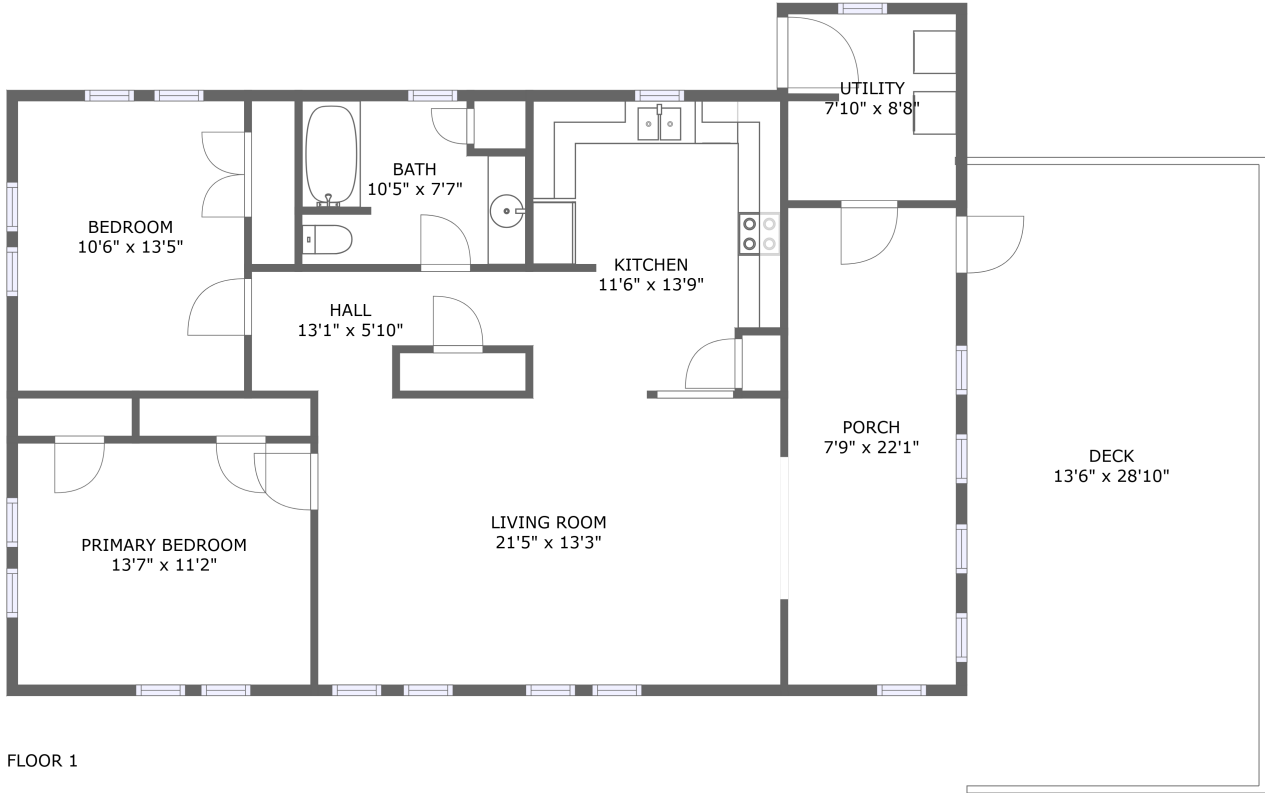



4406 Swan Street, Hitchcock, Texas 77563, United States




Property Summary


 **0** garages

 **2** bedrooms

 **1** bathrooms

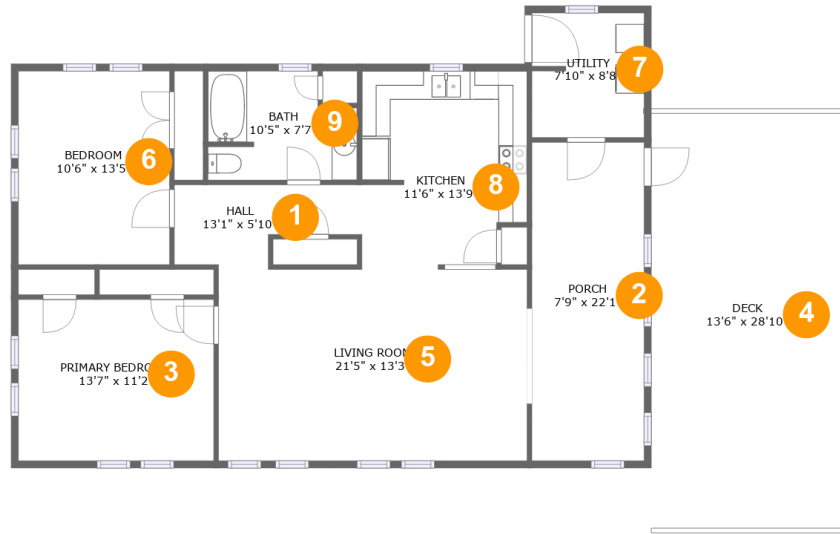
 **0** half baths

 **1** floors

 **1,112** Gross Living Area sqft

 **1,675** total sqft

4406 Swan Street, Hitchcock, Texas 77563, United States



Room Dimensions

Floor 1

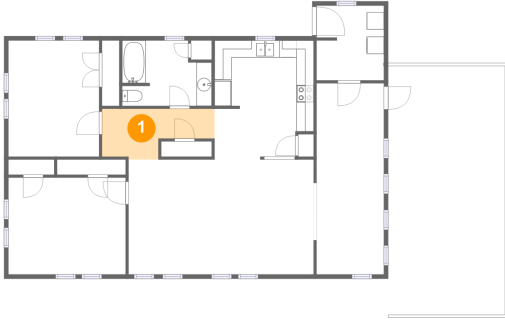
Total sqft: 1675

Living area: 1112

#	Room name	Dimensions	Area (sqft)	Counted as Living Area
1	Hall	13'1" x 5'10"	60 sq. ft	Yes
2	Porch	7'9" x 22'1"	173 sq. ft	No
3	Primary Bedroom	13'7" x 11'2"	152 sq. ft	Yes
4	Deck	13'6" x 28'10"	390 sq. ft	No
5	Living Room	21'5" x 13'3"	285 sq. ft	Yes
6	Bedroom	10'6" x 13'5"	141 sq. ft	Yes
7	Utility	7'10" x 8'8"	67 sq. ft	Yes
8	Kitchen	11'6" x 13'9"	150 sq. ft	Yes
9	Bath	10'5" x 7'7"	71 sq. ft	Yes

4406 Swan Street, Hitchcock, Texas 77563, United States

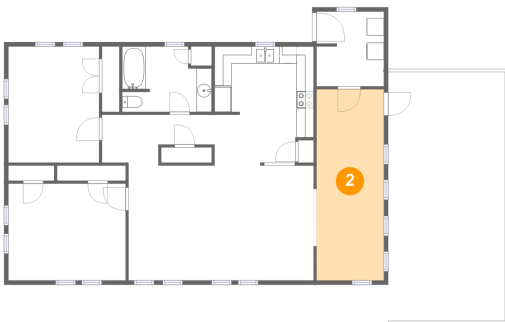
1 Floor 1 - Hall



Dimensions: 13'1" x 5'10"
Area: 60 sq. ft
Counted as Living Area:
Yes

Heated: Yes
Finished: Yes
Enclosed: Yes
Contiguous:
Yes
Permitted: Yes
Wet Space: No
Addition: No
Conversion: No

2 Floor 1 - Porch



Dimensions: 7'9" x 22'1"
Area: 173 sq. ft
Counted as Living Area: No

Heated: No
Finished: Yes
Enclosed: No
Contiguous: No
Permitted: Yes
Wet Space: No
Addition: No
Conversion: No

4406 Swan Street, Hitchcock, Texas 77563, United States

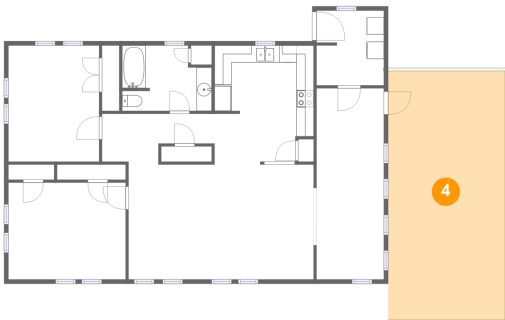
3 Floor 1 - Primary Bedroom



Dimensions: 13'7" x 11'2"
Area: 152 sq. ft
Counted as Living Area:
Yes

Heated: Yes
Finished: Yes
Enclosed: Yes
Contiguous:
Yes
Permitted: Yes
Wet Space: No
Addition: No
Conversion: No

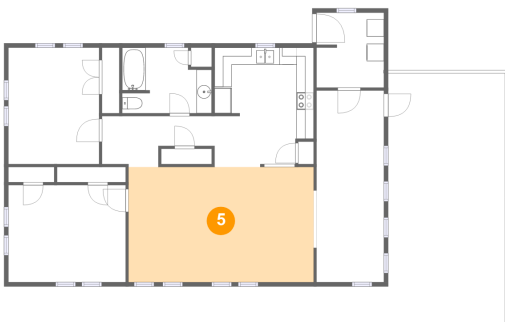
4 Floor 1 - Deck



Dimensions: 13'6" x 28'10"
Area: 390 sq. ft
Counted as Living Area: No

Heated: No
Finished: Yes
Enclosed: No
Contiguous: No
Permitted: Yes
Wet Space: No
Addition: No
Conversion: No

5 Floor 1 - Living Room



Dimensions: 21'5" x 13'3"
Area: 285 sq. ft
Counted as Living Area:
Yes

Heated: Yes
Finished: Yes
Enclosed: Yes
Contiguous:
Yes
Permitted: Yes
Wet Space: No
Addition: No
Conversion: No

4406 Swan Street, Hitchcock, Texas 77563, United States

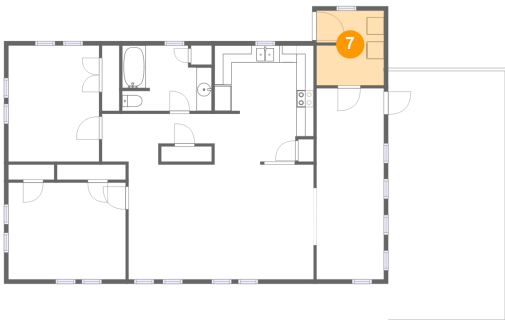
6 Floor 1 - Bedroom



Dimensions: 10'6" x 13'5"
Area: 141 sq. ft
Counted as Living Area:
Yes

Heated: Yes
Finished: Yes
Enclosed: Yes
Contiguous:
Yes
Permitted: Yes
Wet Space: No
Addition: No
Conversion: No

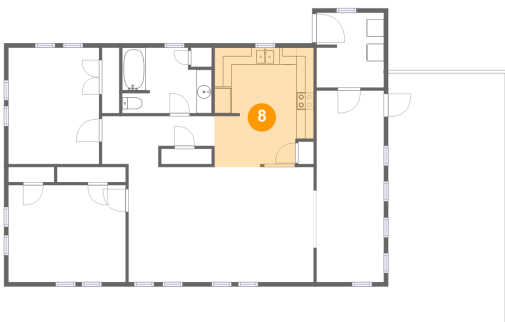
7 Floor 1 - Utility



Dimensions: 7'10" x 8'8"
Area: 67 sq. ft
Counted as Living Area:
Yes

Heated: Yes
Finished: Yes
Enclosed: Yes
Contiguous:
Yes
Permitted: Yes
Wet Space: No
Addition: No
Conversion: No

8 Floor 1 - Kitchen

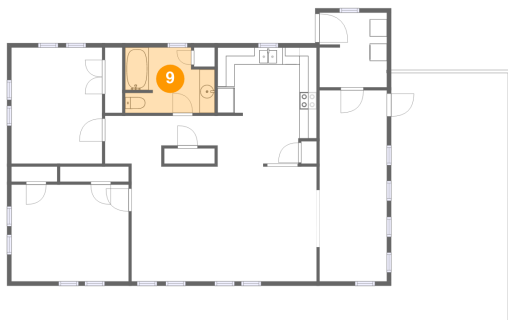


Dimensions: 11'6" x 13'9"
Area: 150 sq. ft
Counted as Living Area:
Yes

Heated: Yes
Finished: Yes
Enclosed: Yes
Contiguous:
Yes
Permitted: Yes
Wet Space: No
Addition: No
Conversion: No

4406 Swan Street, Hitchcock, Texas 77563, United States

9 Floor 1 - Bath



Dimensions: 10'5" x 7'7"
Area: 71 sq. ft
Counted as Living Area:
Yes

Heated: Yes
Finished: Yes
Enclosed: Yes
Contiguous:
Yes
Permitted: Yes
Wet Space: Yes
Addition: No
Conversion: No