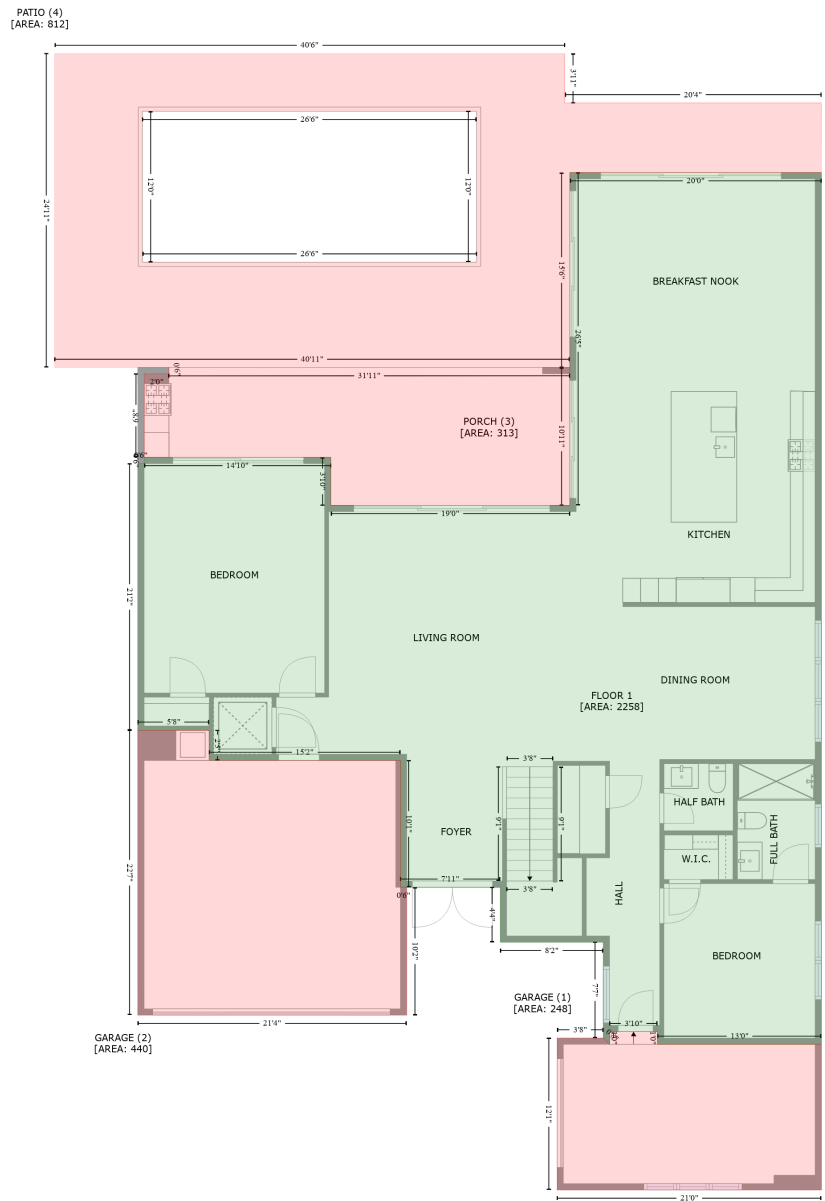


# 2232 Delray Ridge Ln, Delray Beach, Palm Beach County, Florida, United States, 33444

Gross Living Area: 4644 sq. ft



Space	Area (sq. ft)	Calculation
FLOOR 1 (Living area)	2258	Coordinate Polygon Area Algorithm using inches $  \begin{aligned}  & -((964.9 + 964.9) * (129.8 - 961) + (964.9 + 808.8) * (961 - 961) + (808.8 + 808.8) * (961 - 948.9) \\  & + (808.8 + 763.1) * (948.9 - 948.9) + (763.1 + 763.1) * (948.9 - 961) + (763.1 + 757.1) * (961 - \\  & 955) + (757.1 + 757.1) * (955 - 863.6) + (757.1 + 658.9) * (863.6 - 863.6) + (658.9 + 658.9) * \\  & (863.6 - 811.3) + (658.9 + 563.8) * (811.3 - 811.3) + (563.8 + 563.8) * (811.3 - 690.4) + (563.8 + \\  & 381.6) * (690.4 - 690.4) + (381.6 + 381.6) * (690.4 - 661.6) + (381.6 + 313.5) * (661.6 - 661.6) + \\  & (313.5 + 313.5) * (661.6 - 407.3) + (313.5 + 319.5) * (407.3 - 407.3) + (319.5 + 319.5) * (407.3 - \\  & 401.3) + (319.5 + 497.5) * (401.3 - 401.3) + (497.5 + 497.5) * (401.3 - 447.1) + (497.5 + 725.2) *  \end{aligned}  $

# 2232 Delray Ridge Ln, Delray Beach, Palm Beach County, Florida, United States, 33444

Gross Living Area: 4644 sq. ft

Space	Area (sq. ft)	Calculation <small>Coordinate Polygon Area Algorithm using inches</small>
		$(447.1 - 447.1) + (725.2 + 725.2) * (447.1 - 129.8) + (725.2 + 964.9) * (129.8 - 129.8) * 0.5 * 0.00694$
GARAGE (Non-living area)	248	$-((808.8 + 808.8) * (948.9 - 961) + (808.8 + 964.9) * (961 - 961) + (964.9 + 964.9) * (961 - 1099.8) + (964.9 + 713.1) * (1099.8 - 1099.8) + (713.1 + 713.1) * (1099.8 - 955) + (713.1 + 757.1) * (955 - 955) + (757.1 + 763.1) * (955 - 961) + (763.1 + 763.1) * (961 - 948.9) + (763.1 + 808.8) * (948.9 - 948.9)) * 0.5 * 0.00694$
GARAGE (Non-living area)	440	$-((381.6 + 381.6) * (661.6 - 690.4) + (381.6 + 563.8) * (690.4 - 690.4) + (563.8 + 563.8) * (690.4 - 811.3) + (563.8 + 569.8) * (811.3 - 811.3) + (569.8 + 569.8) * (811.3 - 933.1) + (569.8 + 313.5) * (933.1 - 933.1) + (313.5 + 313.5) * (933.1 - 661.6) + (313.5 + 381.6) * (661.6 - 661.6)) * 0.5 * 0.00694$
PORCH (Non-living area)	313	$-((725.2 + 725.2) * (315.6 - 447.1) + (725.2 + 497.5) * (447.1 - 447.1) + (497.5 + 497.5) * (447.1 - 401.3) + (497.5 + 319.6) * (401.3 - 401.3) + (319.6 + 319.7) * (401.3 - 321.6) + (319.7 + 343.2) * (321.6 - 321.6) + (343.2 + 342.6) * (321.6 - 315.7) + (342.6 + 725.2) * (315.7 - 315.6)) * 0.5 * 0.00694$
PATIO (Non-living area)	812	$-((720.4 + 720.4) * (16.2 - 63.4) + (720.4 + 964.7) * (63.4 - 63.4) + (964.7 + 964.9) * (63.4 - 129.8) + (964.9 + 725.2) * (129.8 - 129.8) + (725.2 + 725.2) * (129.8 - 315.6) + (725.2 + 234.2) * (315.6 - 315.6) + (234.2 + 234.2) * (315.6 - 16.2) + (234.2 + 720.4) * (16.2 - 16.2)) * 0.5 * 0.00694 - ((636.3 + 317.9) * (71.4 - 71.4) + (317.9 + 317.9) * (71.4 - 215.2) + (317.9 + 636.3) * (215.2 - 215.2) + (636.3 + 636.3) * (215.2 - 71.4)) * 0.5 * 0.00694$

# 2232 Delray Ridge Ln, Delray Beach, Palm Beach County, Florida, United States, 33444

Gross Living Area: 4644 sq. ft



## Space

Area (sq. ft)

Calculation Coordinate Polygon Area Algorithm using inches

FLOOR 2  
(Living area)

2386

$-(972.7 + 972.7) * (207.8 - 725.7) + (972.7 + 772.8) * (725.7 - 725.7) + (772.8 + 772.8) * (725.7 - 871.4) + (772.8 + 666.7) * (871.4 - 871.4) + (666.7 + 666.7) * (871.4 - 818.4) + (666.7 + 668.7) * (818.4 - 812.4) + (668.7 + 668.7) * (812.4 - 724.3) + (668.7 + 576.5) * (724.3 - 723.2) + (576.5 + 576.5) * (723.2 - 812.4) + (576.5 + 578.4) * (812.4 - 818.4) + (578.4 + 578.4) * (818.4 - 940.9) + (578.4 + 321.3) * (940.9 - 940.9) + (321.3 + 321.3) * (940.9 - 273.1) + (321.3 + 505.2) * (273.1 - 273.1) + (505.2 + 505.2) * (273.1 - 383.4) + (505.2 + 567) * (383.4 - 383.4) + (567 + 567) * (383.4 - 455) + (567 + 733) * (455 - 455) + (733 + 733) * (455 - 207.8) + (733 + 972.7) * (207.8 -$

# 2232 Delray Ridge Ln, Delray Beach, Palm Beach County, Florida, United States, 33444

Gross Living Area: 4644 sq. ft

Space	Area (sq. ft)	Calculation <small>Coordinate Polygon Area Algorithm using inches</small>
BALCONY (Non-living area)	55	$207.8) * 0.5 * 0.00694$ $-((509.8 + 509.8) * (940.9 - 988.8) + (509.8 + 343.9) * (988.8 - 988.8) + (343.9 + 343.9) * (988.8 - 971) + (343.9 + 344.8) * (971 - 940.9) + (344.8 + 509.8) * (940.9 - 940.9)) * 0.5 * 0.00694$
BALCONY (Non-living area)	168	$-((733 + 733) * (329.6 - 455) + (733 + 567) * (455 - 455) + (567 + 567) * (455 - 383.4) + (567 + 505.2) * (383.4 - 383.4) + (505.2 + 505.2) * (383.4 - 329.6) + (505.2 + 733) * (329.6 - 329.6)) * 0.5 * 0.00694$
BALCONY (Non-living area)	102	$-(967.9 + 967.9) * (143.7 - 207.8) + (967.9 + 737.9) * (207.8 - 207.8) + (737.9 + 738.4) * (207.8 - 143.7) + (738.4 + 967.9) * (143.7 - 143.7)) * 0.5 * 0.00694$
OPEN TO BELOW (Non-living area)	61	$-((576.5 + 668.7) * (723.2 - 724.3) + (668.7 + 668.7) * (724.3 - 812.4) + (668.7 + 666.7) * (812.4 - 818.4) + (666.7 + 578.4) * (818.4 - 818.4) + (578.4 + 576.5) * (818.4 - 812.4) + (576.5 + 576.5) * (812.4 - 723.2)) * 0.5 * 0.00694$