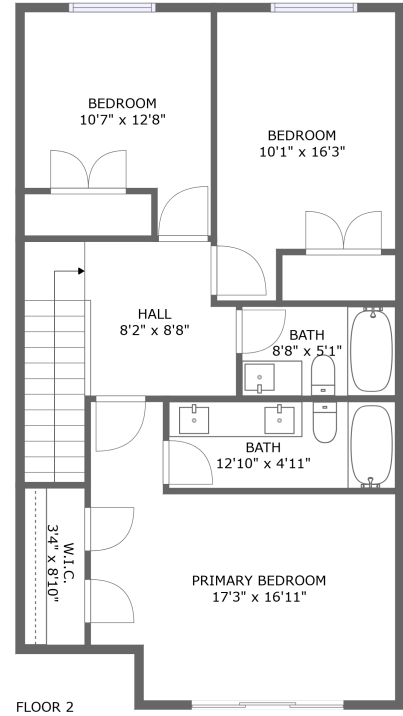
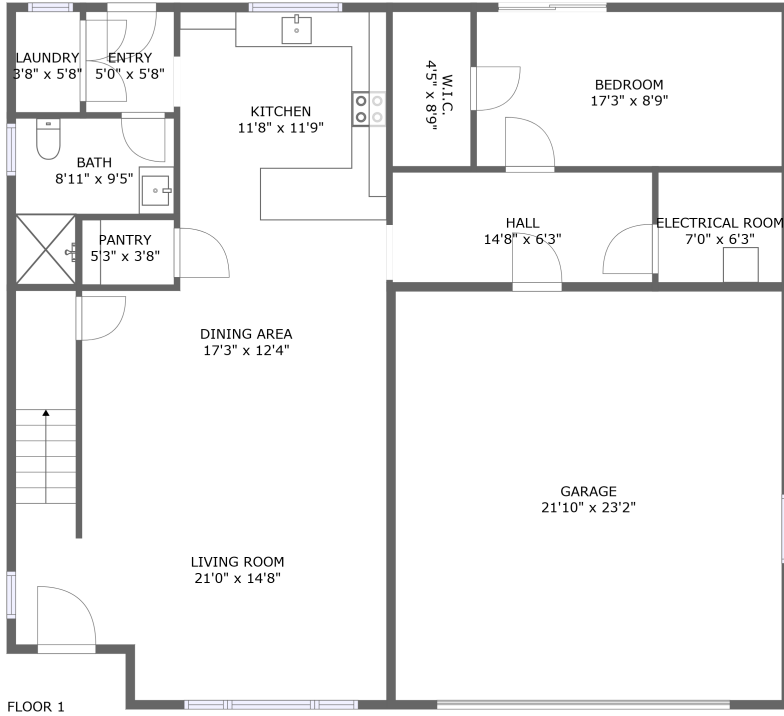



# 153 N Sycamore Dr, Valley Center, Sedgwick County, Kansas, United States, 67147



## Property summary

 **1** Garages

 **4** Bedrooms

 **3** Bathrooms

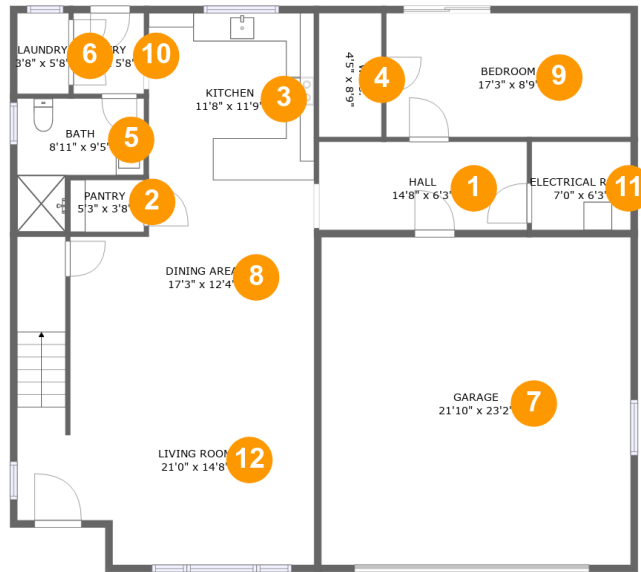
 **0** Half baths

 **2** Floors

 **2,026** Gross living area sqft

 **2,605** Total sqft

**153 N Sycamore Dr, Valley Center, Sedgwick County, Kansas, United States, 67147**



**Room dimensions**

Floor 1

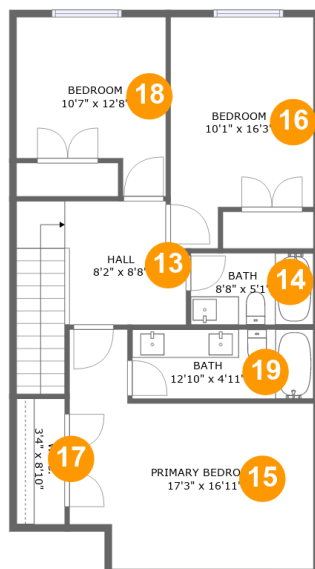
Total sqft: 1749 Living area: 1170

#		Dimensions	sqft	Counted as living area
1	Hall	14'8" x 6'3"	91 sq. ft	Yes
2	Pantry	5'3" x 3'8"	19 sq. ft	Yes
3	Kitchen	11'8" x 11'9"	137 sq. ft	Yes
4	Cl	4'5" x 8'9"	39 sq. ft	Yes
5	Bath	8'11" x 9'5"	62 sq. ft	Yes
6	Utility	3'8" x 5'8"	21 sq. ft	Yes
7	Garage	21'10" x 23'2"	505 sq. ft	No
8	Dining Room	17'3" x 12'4"	192 sq. ft	Yes
9	Bedroom	17'3" x 8'9"	151 sq. ft	Yes
10	Entry	5'0" x 5'8"	28 sq. ft	Yes
11	Room	7'0" x 6'3"	44 sq. ft	No

**153 N Sycamore Dr, Valley Center, Sedgwick County,  
Kansas, United States, 67147**

#		Dimensions	sqft	Counted as living area
12	Living Room	21'0" x 14'8"	316 sq. ft	Yes

# 153 N Sycamore Dr, Valley Center, Sedgwick County, Kansas, United States, 67147



## Room dimensions

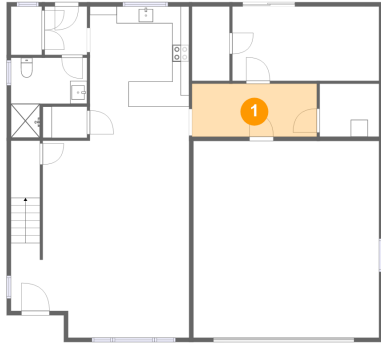
Floor 2

Total sqft: 856 Living area: 856

#		Dimensions	sqft	Counted as living area
13	Hall	8'2" x 8'8"	116 sq. ft	Yes
14	Bath	8'8" x 5'1"	44 sq. ft	Yes
15	Bedroom	17'3" x 16'11"	213 sq. ft	Yes
16	Bedroom	10'1" x 16'3"	145 sq. ft	Yes
17	Cl	3'4" x 8'10"	30 sq. ft	Yes
18	Bedroom	10'7" x 12'8"	113 sq. ft	Yes
19	Bath	12'10" x 4'11"	62 sq. ft	Yes

# 153 N Sycamore Dr, Valley Center, Sedgwick County, Kansas, United States, 67147

## 1 Floor 1 - Hall



**Dimensions:** 14'8" x 6'3"  
**Area:** 91 sq. ft  
**Counted as living area:** Yes

**Heated:** Yes  
**Finished:** Yes  
**Enclosed:** Yes  
**Contiguous:** Yes  
**Permitted:** Yes  
**Wet space:** No  
**Addition:** No  
**Conversion:** No

## 2 Floor 1 - Pantry



**Dimensions:** 5'3" x 3'8"  
**Area:** 19 sq. ft  
**Counted as living area:** Yes

**Heated:** Yes  
**Finished:** Yes  
**Enclosed:** Yes  
**Contiguous:** Yes  
**Permitted:** Yes  
**Wet space:** No  
**Addition:** No  
**Conversion:** No

# 153 N Sycamore Dr, Valley Center, Sedgwick County, Kansas, United States, 67147

## 3 Floor 1 - Kitchen



Dimensions: 11'8" x 11'9"  
Area: 137 sq. ft  
Counted as living area: Yes

Heated: Yes  
Finished: Yes  
Enclosed: Yes  
Contiguous: Yes  
Permitted: Yes  
Wet space: No  
Addition: No  
Conversion: No

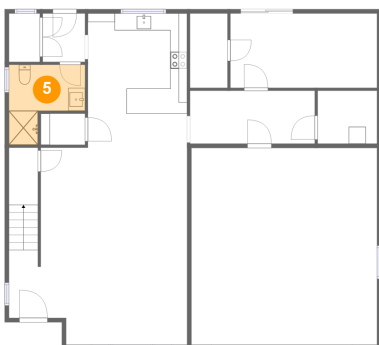
## 4 Floor 1 - Cl



Dimensions: 4'5" x 8'9"  
Area: 39 sq. ft  
Counted as living area: Yes

Heated: Yes  
Finished: Yes  
Enclosed: Yes  
Contiguous: Yes  
Permitted: Yes  
Wet space: No  
Addition: No  
Conversion: No

## 5 Floor 1 - Bath

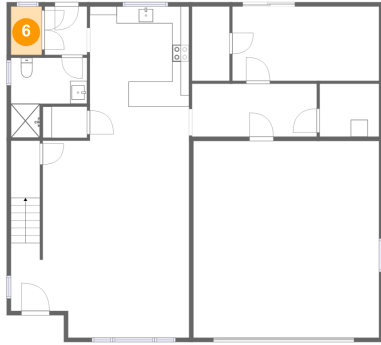


Dimensions: 8'11" x 9'5"  
Area: 62 sq. ft  
Counted as living area: Yes

Heated: Yes  
Finished: Yes  
Enclosed: Yes  
Contiguous: Yes  
Permitted: Yes  
Wet space: Yes  
Addition: No  
Conversion: No

# 153 N Sycamore Dr, Valley Center, Sedgwick County, Kansas, United States, 67147

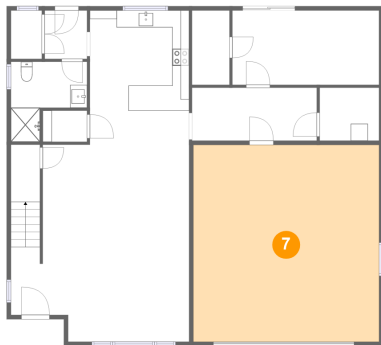
## 6 Floor 1 - Utility



Dimensions: 3'8" x 5'8"  
Area: 21 sq. ft  
Counted as living area: Yes

Heated: Yes  
Finished: Yes  
Enclosed: Yes  
Contiguous: Yes  
Permitted: Yes  
Wet space: No  
Addition: No  
Conversion: No

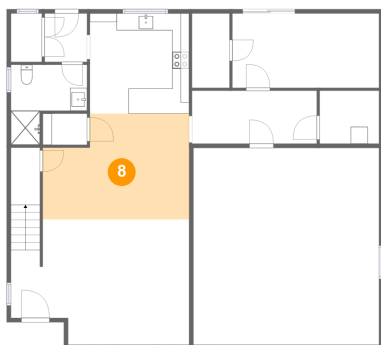
## 7 Floor 1 - Garage



Dimensions: 21'10" x 23'2"  
Area: 505 sq. ft  
Counted as living area: No

Heated: No  
Finished: No  
Enclosed: Yes  
Contiguous: Yes  
Permitted: Yes  
Wet space: No  
Addition: No  
Conversion: No

## 8 Floor 1 - Dining Room

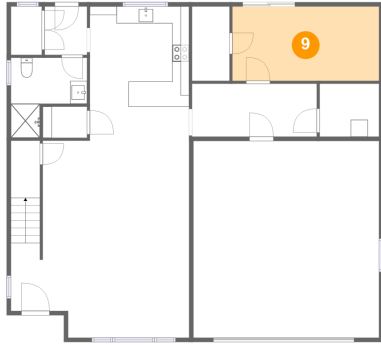


Dimensions: 17'3" x 12'4"  
Area: 192 sq. ft  
Counted as living area: Yes

Heated: Yes  
Finished: Yes  
Enclosed: Yes  
Contiguous: Yes  
Permitted: Yes  
Wet space: No  
Addition: No  
Conversion: No

# 153 N Sycamore Dr, Valley Center, Sedgwick County, Kansas, United States, 67147

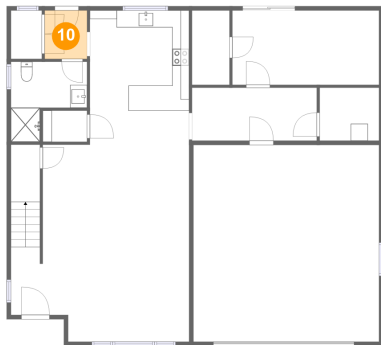
## 9 Floor 1 - Bedroom



Dimensions: 17'3" x 8'9"  
Area: 151 sq. ft  
Counted as living area: Yes

Heated: Yes  
Finished: Yes  
Enclosed: Yes  
Contiguous: Yes  
Permitted: Yes  
Wet space: No  
Addition: No  
Conversion: No

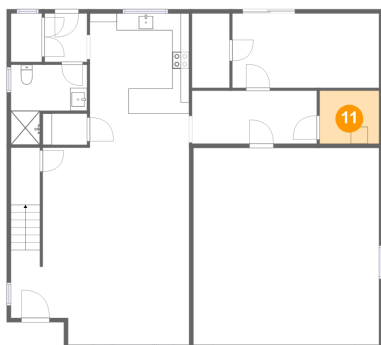
## 10 Floor 1 - Entry



Dimensions: 5'0" x 5'8"  
Area: 28 sq. ft  
Counted as living area: Yes

Heated: Yes  
Finished: Yes  
Enclosed: Yes  
Contiguous: Yes  
Permitted: Yes  
Wet space: No  
Addition: No  
Conversion: No

## 11 Floor 1 - Room



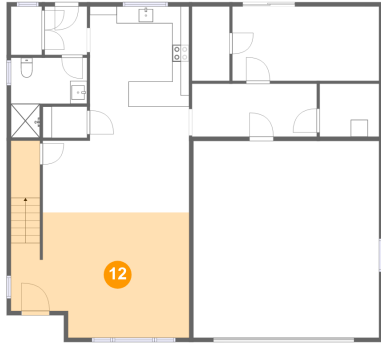
Dimensions: 7'0" x 6'3"  
Area: 44 sq. ft  
Counted as living area: No

Heated: No  
Finished: No  
Enclosed: Yes  
Contiguous: Yes  
Permitted: Yes  
Wet space: No  
Addition: No  
Conversion: No



# 153 N Sycamore Dr, Valley Center, Sedgwick County, Kansas, United States, 67147

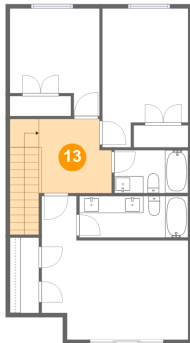
## 12 Floor 1 - Living Room



Dimensions: 21'0" x 14'8"  
Area: 316 sq. ft  
Counted as living area: Yes

Heated: Yes  
Finished: Yes  
Enclosed: Yes  
Contiguous: Yes  
Permitted: Yes  
Wet space: No  
Addition: No  
Conversion: No

## 13 Floor 2 - Hall



Dimensions: 8'2" x 8'8"  
Area: 116 sq. ft  
Counted as living area: Yes

Heated: Yes  
Finished: Yes  
Enclosed: Yes  
Contiguous: Yes  
Permitted: Yes  
Wet space: No  
Addition: No  
Conversion: No

## 14 Floor 2 - Bath



Dimensions: 8'8" x 5'1"  
Area: 44 sq. ft  
Counted as living area: Yes

Heated: Yes  
Finished: Yes  
Enclosed: Yes  
Contiguous: Yes  
Permitted: Yes  
Wet space: Yes  
Addition: No  
Conversion: No

# 153 N Sycamore Dr, Valley Center, Sedgwick County, Kansas, United States, 67147

## 15 Floor 2 - Bedroom



Dimensions: 17'3" x 16'11"  
Area: 213 sq. ft  
Counted as living area: Yes

Heated: Yes  
Finished: Yes  
Enclosed: Yes  
Contiguous: Yes  
Permitted: Yes  
Wet space: No  
Addition: No  
Conversion: No

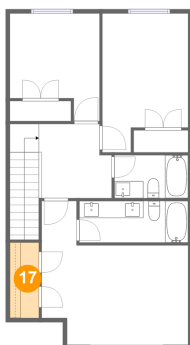
## 16 Floor 2 - Bedroom



Dimensions: 10'1" x 16'3"  
Area: 145 sq. ft  
Counted as living area: Yes

Heated: Yes  
Finished: Yes  
Enclosed: Yes  
Contiguous: Yes  
Permitted: Yes  
Wet space: No  
Addition: No  
Conversion: No

## 17 Floor 2 - Cl

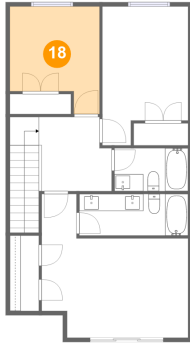


Dimensions: 3'4" x 8'10"  
Area: 30 sq. ft  
Counted as living area: Yes

Heated: Yes  
Finished: Yes  
Enclosed: Yes  
Contiguous: Yes  
Permitted: Yes  
Wet space: No  
Addition: No  
Conversion: No

# 153 N Sycamore Dr, Valley Center, Sedgwick County, Kansas, United States, 67147

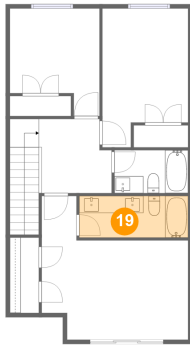
## 18 Floor 2 - Bedroom



Dimensions: 10'7" x 12'8"  
Area: 113 sq. ft  
Counted as living area: Yes

Heated: Yes  
Finished: Yes  
Enclosed: Yes  
Contiguous: Yes  
Permitted: Yes  
Wet space: No  
Addition: No  
Conversion: No

## 19 Floor 2 - Bath



Dimensions: 12'10" x 4'11"  
Area: 62 sq. ft  
Counted as living area: Yes

Heated: Yes  
Finished: Yes  
Enclosed: Yes  
Contiguous: Yes  
Permitted: Yes  
Wet space: Yes  
Addition: No  
Conversion: No