

# 456 West King Street, Lancaster, Lancaster County, Pennsylvania, United States, 17603



## Property summary

**0** Garages      **4** Bedrooms      **3** Bathrooms      **0** Half baths

**4** Floors      **1,928** Gross living area sqft      **2,717** Total sqft

# 456 West King Street, Lancaster, Lancaster County, Pennsylvania, United States, 17603



## Room dimensions

Floor 1

Total sqft: 680

Living area: 0

#		Dimensions	sqft	Counted as living area
1	Basement	13'5" x 44'9"	550 sq. ft	No
2	Storage	10'6" x 7'11"	73 sq. ft	No

# 456 West King Street, Lancaster, Lancaster County, Pennsylvania, United States, 17603



## Room dimensions

Floor 2

Total sqft: 803 Living area: 788

#		Dimensions	sqft	Counted as living area
3	Dining Area	12'6" x 11'8"	144 sq. ft	Yes
4	Porch	4'3" x 3'7"	15 sq. ft	No
5	Living Room	15'4" x 17'2"	275 sq. ft	Yes
6	Kitchen	11'7" x 17'6"	193 sq. ft	Yes
7	Foyer	3'9" x 4'2"	16 sq. ft	Yes
8	Bath	11'7" x 9'1"	98 sq. ft	Yes

# 456 West King Street, Lancaster, Lancaster County, Pennsylvania, United States, 17603

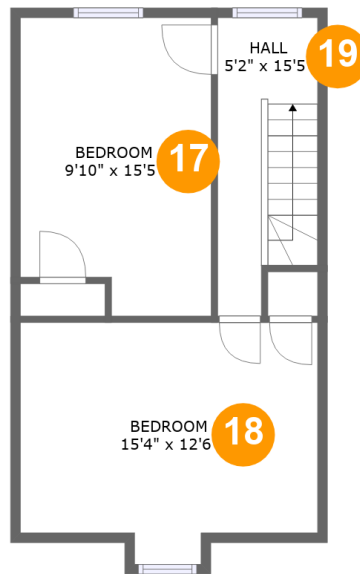


## Room dimensions

Floor 3

Total sqft: 781 Living area: 687

#		Dimensions	sqft	Counted as living area
9	Closet	6'1" x 5'3"	32 sq. ft	Yes
10	Bath	9'8" x 9'5"	91 sq. ft	Yes
11	Bedroom	11'7" x 11'1"	114 sq. ft	Yes
12	Hall	3'3" x 5'3"	17 sq. ft	Yes
13	Balcony	11'9" x 7'11"	94 sq. ft	No
14	Hall	5'4" x 21'7"	97 sq. ft	Yes
15	Primary Bedroom	15'4" x 12'10"	198 sq. ft	Yes
16	Bath	7'8" x 6'2"	44 sq. ft	Yes

**456 West King Street, Lancaster, Lancaster County,  
Pennsylvania, United States, 17603****Room dimensions**

Floor 4

Total sqft: 453 Living area: 453

#		Dimensions	sqft	Counted as living area
17	Bedroom	9'10" x 15'5"	143 sq. ft	Yes
18	Bedroom	15'4" x 12'6"	173 sq. ft	Yes
19	Hall	5'2" x 15'5"	72 sq. ft	Yes

# 456 West King Street, Lancaster, Lancaster County, Pennsylvania, United States, 17603

## 1 Floor 1 - Basement



Dimensions: 13'5" x 44'9"  
Area: 550 sq. ft  
Counted as living area: No

Heated: Yes  
Finished: No  
Enclosed: Yes  
Contiguous: Yes  
Permitted: Yes  
Wet space: No  
Addition: No  
Conversion: No

## 2 Floor 1 - Storage



Dimensions: 10'6" x 7'11"  
Area: 73 sq. ft  
Counted as living area: No

Heated: No  
Finished: No  
Enclosed: No  
Contiguous: Yes  
Permitted: Yes  
Wet space: No  
Addition: No  
Conversion: No

456 West King Street, Lancaster, Lancaster County,  
Pennsylvania, United States, 17603

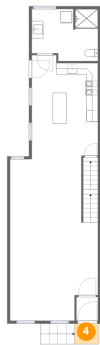
### 3 Floor 2 - Dining Area



Dimensions: 12'6" x 11'8"  
Area: 144 sq. ft  
Counted as living area: Yes

Heated: Yes  
Finished: Yes  
Enclosed: Yes  
Contiguous: Yes  
Permitted: Yes  
Wet space: No  
Addition: No  
Conversion: No

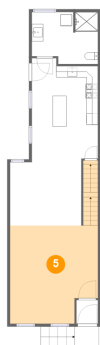
### 4 Floor 2 - Porch



Dimensions: 4'3" x 3'7"  
Area: 15 sq. ft  
Counted as living area: No

Heated: No  
Finished: Yes  
Enclosed: No  
Contiguous: Yes  
Permitted: Yes  
Wet space: No  
Addition: No  
Conversion: No

### 5 Floor 2 - Living Room



Dimensions: 15'4" x 17'2"  
Area: 275 sq. ft  
Counted as living area: Yes

Heated: Yes  
Finished: Yes  
Enclosed: Yes  
Contiguous: Yes  
Permitted: Yes  
Wet space: No  
Addition: No  
Conversion: No

**456 West King Street, Lancaster, Lancaster County,  
Pennsylvania, United States, 17603**

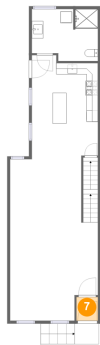
**6 Floor 2 - Kitchen**



**Dimensions:** 11'7" x 17'6"  
**Area:** 193 sq. ft  
**Counted as living area:** Yes

**Heated:** Yes  
**Finished:** Yes  
**Enclosed:** Yes  
**Contiguous:** Yes  
**Permitted:** Yes  
**Wet space:** No  
**Addition:** No  
**Conversion:** No

**7 Floor 2 - Foyer**



**Dimensions:** 3'9" x 4'2"  
**Area:** 16 sq. ft  
**Counted as living area:** Yes

**Heated:** Yes  
**Finished:** Yes  
**Enclosed:** Yes  
**Contiguous:** Yes  
**Permitted:** Yes  
**Wet space:** No  
**Addition:** No  
**Conversion:** No

**8 Floor 2 - Bath**



**Dimensions:** 11'7" x 9'1"  
**Area:** 98 sq. ft  
**Counted as living area:** Yes

**Heated:** Yes  
**Finished:** Yes  
**Enclosed:** Yes  
**Contiguous:** Yes  
**Permitted:** Yes  
**Wet space:** Yes  
**Addition:** No  
**Conversion:** No



**456 West King Street, Lancaster, Lancaster County,  
Pennsylvania, United States, 17603**

**9 Floor 3 - Closet**



**Dimensions:** 6'1" x 5'3"  
**Area:** 32 sq. ft  
**Counted as living area:** Yes

**Heated:** Yes  
**Finished:** Yes  
**Enclosed:** Yes  
**Contiguous:** Yes  
**Permitted:** Yes  
**Wet space:** No  
**Addition:** No  
**Conversion:** No

**10 Floor 3 - Bath**



**Dimensions:** 9'8" x 9'5"  
**Area:** 91 sq. ft  
**Counted as living area:** Yes

**Heated:** Yes  
**Finished:** Yes  
**Enclosed:** Yes  
**Contiguous:** Yes  
**Permitted:** Yes  
**Wet space:** Yes  
**Addition:** No  
**Conversion:** No

**11 Floor 3 - Bedroom**



**Dimensions:** 11'7" x 11'1"  
**Area:** 114 sq. ft  
**Counted as living area:** Yes

**Heated:** Yes  
**Finished:** Yes  
**Enclosed:** Yes  
**Contiguous:** Yes  
**Permitted:** Yes  
**Wet space:** No  
**Addition:** No  
**Conversion:** No

456 West King Street, Lancaster, Lancaster County,  
Pennsylvania, United States, 17603

**12** Floor 3 - Hall



Dimensions: 3'3" x 5'3"  
Area: 17 sq. ft  
Counted as living area: Yes

Heated: Yes  
Finished: Yes  
Enclosed: Yes  
Contiguous: Yes  
Permitted: Yes  
Wet space: No  
Addition: No  
Conversion: No

**13** Floor 3 - Balcony



Dimensions: 11'9" x 7'11"  
Area: 94 sq. ft  
Counted as living area: No

Heated: No  
Finished: Yes  
Enclosed: No  
Contiguous: Yes  
Permitted: Yes  
Wet space: No  
Addition: No  
Conversion: No

**14** Floor 3 - Hall



Dimensions: 5'4" x 21'7"  
Area: 97 sq. ft  
Counted as living area: Yes

Heated: Yes  
Finished: Yes  
Enclosed: Yes  
Contiguous: Yes  
Permitted: Yes  
Wet space: No  
Addition: No  
Conversion: No

456 West King Street, Lancaster, Lancaster County,  
Pennsylvania, United States, 17603

### 15 Floor 3 - Primary Bedroom



Dimensions: 15'4" x 12'10"  
Area: 198 sq. ft  
Counted as living area: Yes

Heated: Yes  
Finished: Yes  
Enclosed: Yes  
Contiguous: Yes  
Permitted: Yes  
Wet space: No  
Addition: No  
Conversion: No

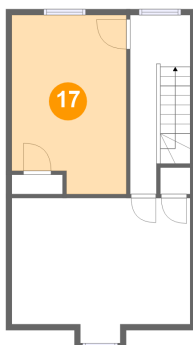
### 16 Floor 3 - Bath



Dimensions: 7'8" x 6'2"  
Area: 44 sq. ft  
Counted as living area: Yes

Heated: Yes  
Finished: Yes  
Enclosed: Yes  
Contiguous: Yes  
Permitted: Yes  
Wet space: Yes  
Addition: No  
Conversion: No

### 17 Floor 4 - Bedroom

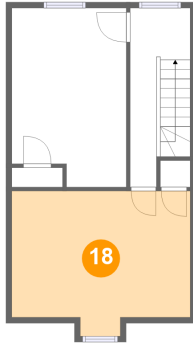


Dimensions: 9'10" x 15'5"  
Area: 143 sq. ft  
Counted as living area: Yes

Heated: Yes  
Finished: Yes  
Enclosed: Yes  
Contiguous: Yes  
Permitted: Yes  
Wet space: No  
Addition: No  
Conversion: No

456 West King Street, Lancaster, Lancaster County,  
Pennsylvania, United States, 17603

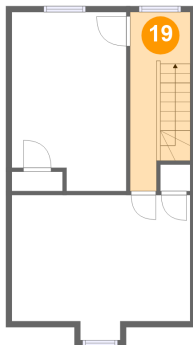
### 18 Floor 4 - Bedroom



Dimensions: 15'4" x 12'6"  
Area: 173 sq. ft  
Counted as living area: Yes

Heated: Yes  
Finished: Yes  
Enclosed: Yes  
Contiguous: Yes  
Permitted: Yes  
Wet space: No  
Addition: No  
Conversion: No

### 19 Floor 4 - Hall



Dimensions: 5'2" x 15'5"  
Area: 72 sq. ft  
Counted as living area: Yes

Heated: Yes  
Finished: Yes  
Enclosed: Yes  
Contiguous: Yes  
Permitted: Yes  
Wet space: No  
Addition: No  
Conversion: No