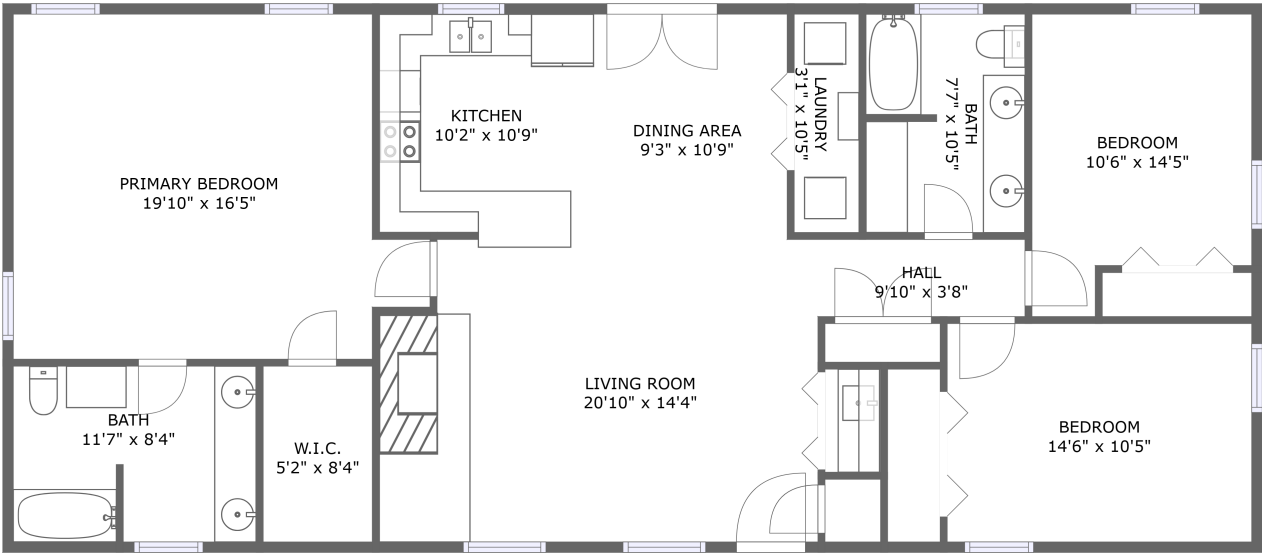


Home report

8991 County Road 156, Jiba, Kaufman, Kaufman County, Texas,  
United States, 75142



FLOOR 1

Total Area: 1567 sq. ft

Floor 1: 1567 sq. ft

Excluded:

Property summary

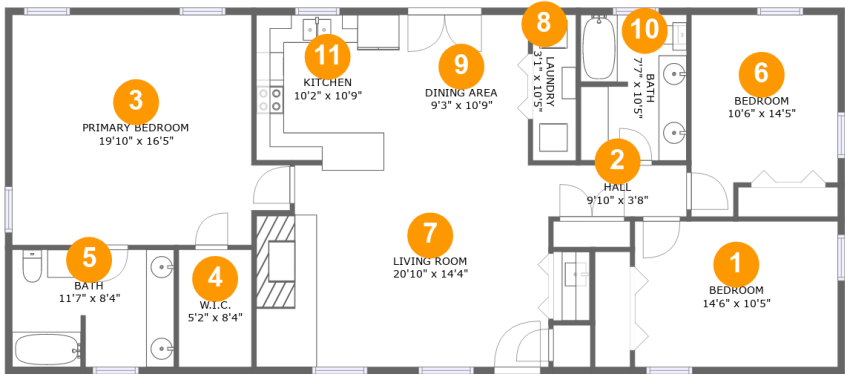
1 Floors

3 Bedrooms

2 Bathrooms

Home report

8991 County Road 156, Jiba, Kaufman, Kaufman County, Texas,  
United States, 75142

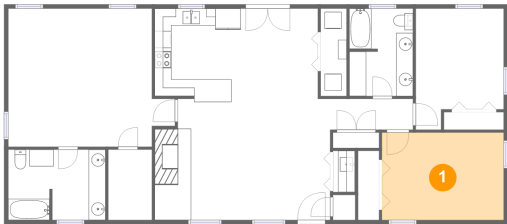


Room dimensions

Floor 1 Total:1567sqft Excluded: 0sqft

#		Max Dimensions	sqft	Included
1	Bedroom	14'6" x 10'5"	151 sq. ft	Yes
2	Hall	9'10" x 3'8"	36 sq. ft	Yes
3	Primary Bedroom	19'10" x 16'5"	290 sq. ft	Yes
4	W.I.C.	5'2" x 8'4"	43 sq. ft	Yes
5	Bath	11'7" x 8'4"	96 sq. ft	Yes
6	Bedroom	10'6" x 14'5"	133 sq. ft	Yes
7	Living Room	20'10" x 14'4"	291 sq. ft	Yes
8	Laundry	3'1" x 10'5"	32 sq. ft	Yes
9	Dining Area	9'3" x 10'9"	99 sq. ft	Yes
10	Bath	7'7" x 10'5"	78 sq. ft	Yes
11	Kitchen	10'2" x 10'9"	108 sq. ft	Yes

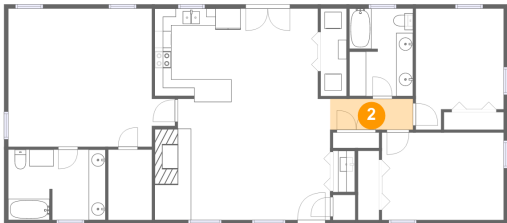
1 Floor 1 - Bedroom



Max Dimensions: 14'6" x 10'5"  
Calculated Area: 151 sq. ft  
Included: Yes

Heated: Yes  
Finished: Yes  
Enclosed: Yes  
Contiguous: Yes  
Permitted: Yes  
Wet space: No  
Addition: No  
Conversion: No

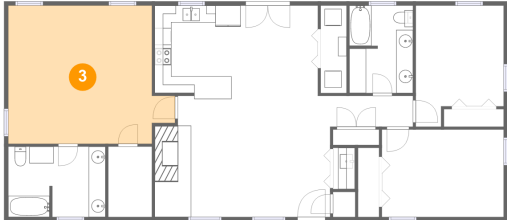
2 Floor 1 - Hall



Max Dimensions: 9'10" x 3'8"  
Calculated Area: 36 sq. ft  
Included: Yes

Heated: Yes  
Finished: Yes  
Enclosed: Yes  
Contiguous: Yes  
Permitted: Yes  
Wet space: No  
Addition: No  
Conversion: No

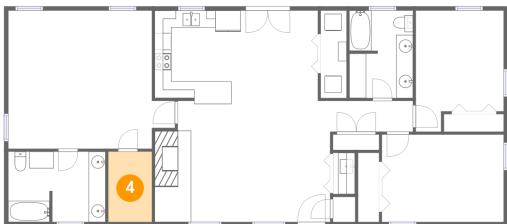
3 Floor 1 - Primary Bedroom



Max Dimensions: 19'10" x 16'5"  
Calculated Area: 290 sq. ft  
Included: Yes

Heated: Yes  
Finished: Yes  
Enclosed: Yes  
Contiguous: Yes  
Permitted: Yes  
Wet space: No  
Addition: No  
Conversion: No

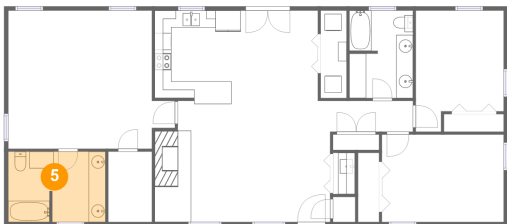
4 Floor 1 - W.I.C.



Max Dimensions: 5'2" x 8'4"  
Calculated Area: 43 sq. ft  
Included: Yes

Heated: Yes  
Finished: Yes  
Enclosed: Yes  
Contiguous: Yes  
Permitted: Yes  
Wet space: No  
Addition: No  
Conversion: No

5 Floor 1 - Bath



Max Dimensions: 11'7" x 8'4"  
Calculated Area: 96 sq. ft  
Included: Yes

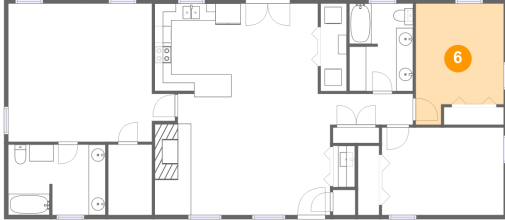
Heated: Yes  
Finished: Yes  
Enclosed: Yes  
Contiguous: Yes  
Permitted: Yes  
Wet space: Yes  
Addition: No  
Conversion: No

## Home report

8991 County Road 156, Jiba, Kaufman, Kaufman County, Texas,  
United States, 75142

### 6 Floor 1 - Bedroom

---

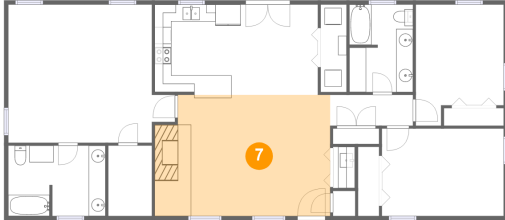


Max Dimensions: 10'6" x 14'5"  
Calculated Area: 133 sq. ft  
Included: Yes

Heated: Yes  
Finished: Yes  
Enclosed: Yes  
Contiguous: Yes  
Permitted: Yes  
Wet space: No  
Addition: No  
Conversion: No

### 7 Floor 1 - Living Room

---

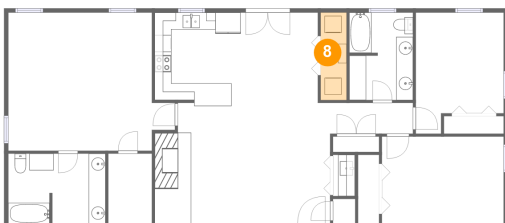


Max Dimensions: 20'10" x 14'4"  
Calculated Area: 291 sq. ft  
Included: Yes

Heated: Yes  
Finished: Yes  
Enclosed: Yes  
Contiguous: Yes  
Permitted: Yes  
Wet space: No  
Addition: No  
Conversion: No

### 8 Floor 1 - Laundry

---



Max Dimensions: 3'1" x 10'5"  
Calculated Area: 32 sq. ft  
Included: Yes

Heated: Yes  
Finished: Yes  
Enclosed: Yes  
Contiguous: Yes  
Permitted: Yes  
Wet space: No  
Addition: No  
Conversion: No

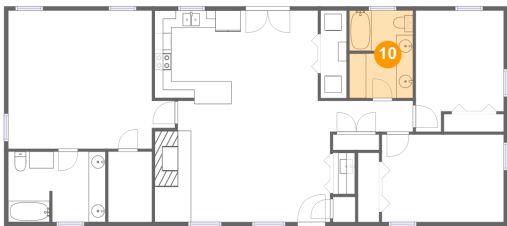
9 Floor 1 - Dining Area



Max Dimensions: 9'3" x 10'9"  
Calculated Area: 99 sq. ft  
Included: Yes

Heated: Yes  
Finished: Yes  
Enclosed: Yes  
Contiguous: Yes  
Permitted: Yes  
Wet space: No  
Addition: No  
Conversion: No

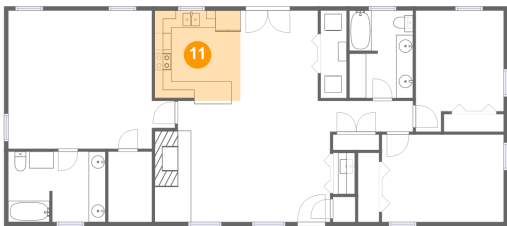
10 Floor 1 - Bath



Max Dimensions: 7'7" x 10'5"  
Calculated Area: 78 sq. ft  
Included: Yes

Heated: Yes  
Finished: Yes  
Enclosed: Yes  
Contiguous: Yes  
Permitted: Yes  
Wet space: Yes  
Addition: No  
Conversion: No

11 Floor 1 - Kitchen



Max Dimensions: 10'2" x 10'9"  
Calculated Area: 108 sq. ft  
Included: Yes

Heated: Yes  
Finished: Yes  
Enclosed: Yes  
Contiguous: Yes  
Permitted: Yes  
Wet space: No  
Addition: No  
Conversion: No