



21 Imperial Crescent,Bradford,ON,CA



Property summary



1 Garages



5 Bedrooms



3 Bathrooms



0 Half baths



2 Floors



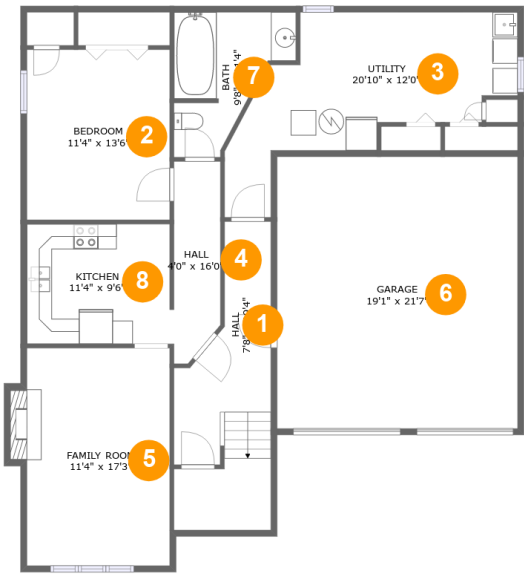
2,692 Gross living area sqft



3,451 Total sqft



21 Imperial Crescent,Bradford,ON,CA



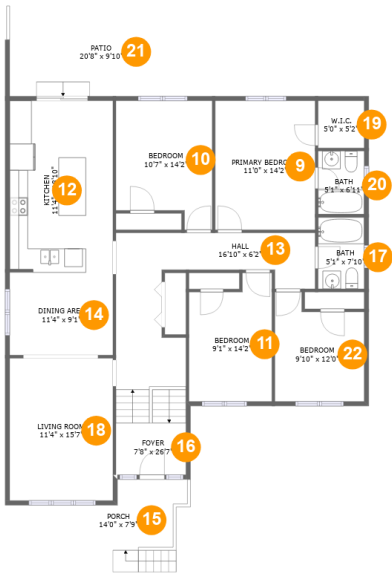
Room dimensions

Floor 1 Total sqft: 1570    Living area: 1128

#		Dimensions	sqft	Counted as living area
1	Hall	7'8" x 19'4"	144 sq. ft	Yes
2	Bedroom	11'4" x 13'6"	153 sq. ft	Yes
3	Utility	20'10" x 12'0"	206 sq. ft	Yes
4	Hall	4'0" x 16'0"	56 sq. ft	Yes
5	Family Room	11'4" x 17'3"	203 sq. ft	Yes
6	Garage	19'1" x 21'7"	412 sq. ft	No
7	Bath	9'8" x 11'4"	78 sq. ft	Yes
8	Kitchen	11'4" x 9'6"	108 sq. ft	Yes



21 Imperial Crescent,Bradford,ON,CA



Room dimensions

Floor 2 Total sqft: 1881    Living area: 1564

#		Dimensions	sqft	Counted as living area
9	Primary Bedroom	11'0" x 14'2"	156 sq. ft	Yes
10	Bedroom	10'7" x 14'2"	134 sq. ft	Yes
11	Bedroom	9'1" x 14'2"	117 sq. ft	Yes
12	Kitchen	11'4" x 18'10"	213 sq. ft	Yes
13	Hall	16'10" x 6'2"	78 sq. ft	Yes
14	Dining Area	11'4" x 9'1"	103 sq. ft	Yes
15	Porch	14'0" x 7'9"	111 sq. ft	No
16	Foyer	7'8" x 26'7"	174 sq. ft	Yes
17	Bath	5'1" x 7'10"	40 sq. ft	Yes
18	Living Room	11'4" x 15'7"	178 sq. ft	Yes
19	W.I.C.	5'0" x 5'2"	26 sq. ft	Yes



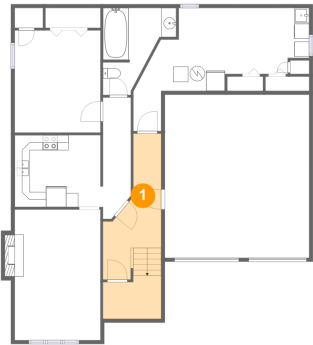
21 Imperial Crescent,Bradford,ON,CA

#		Dimensions	sqft	Counted as living area
20	Bath	5'1" x 6'11"	35 sq. ft	Yes
21	Patio	20'8" x 9'10"	206 sq. ft	No
22	Bedroom	9'10" x 12'0"	103 sq. ft	Yes



# 21 Imperial Crescent,Bradford,ON,CA

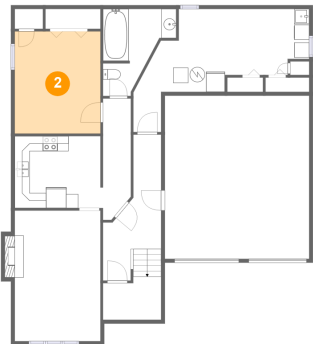
## 1 Floor 1 - Hall



Dimensions: 7'8" x 19'4"  
Area: 144 sq. ft  
Counted as living area: Yes

Heated: Yes  
Finished: Yes  
Enclosed: Yes  
Contiguous: Yes  
Permitted: Yes  
Wet space: No  
Addition: No  
Conversion: No

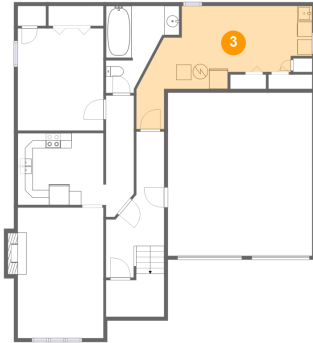
## 2 Floor 1 - Bedroom



Dimensions: 11'4" x 13'6"  
Area: 153 sq. ft  
Counted as living area: Yes

Heated: Yes  
Finished: Yes  
Enclosed: Yes  
Contiguous: Yes  
Permitted: Yes  
Wet space: No  
Addition: No  
Conversion: No

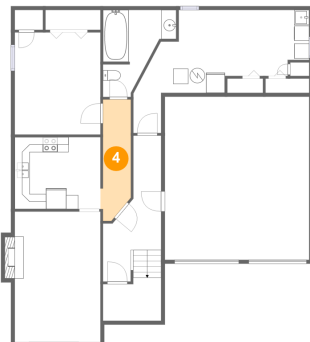
### 3 Floor 1 - Utility



Dimensions: 20'10" x 12'0"  
Area: 206 sq. ft  
Counted as living area: Yes

Heated: Yes  
Finished: Yes  
Enclosed: Yes  
Contiguous: Yes  
Permitted: Yes  
Wet space: No  
Addition: No  
Conversion: No

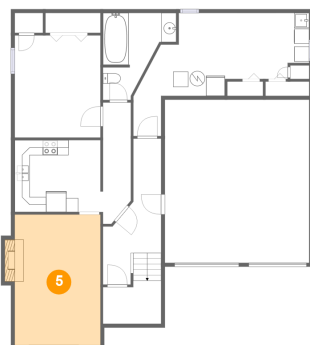
### 4 Floor 1 - Hall



Dimensions: 4'0" x 16'0"  
Area: 56 sq. ft  
Counted as living area: Yes

Heated: Yes  
Finished: Yes  
Enclosed: Yes  
Contiguous: Yes  
Permitted: Yes  
Wet space: No  
Addition: No  
Conversion: No

### 5 Floor 1 - Family Room



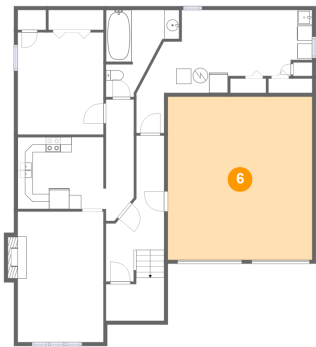
Dimensions: 11'4" x 17'3"  
Area: 203 sq. ft  
Counted as living area: Yes

Heated: Yes  
Finished: Yes  
Enclosed: Yes  
Contiguous: Yes  
Permitted: Yes  
Wet space: No  
Addition: No  
Conversion: No



21 Imperial Crescent,Bradford,ON,CA

6 Floor 1 - Garage



Dimensions: 19'1" x 21'7"  
Area: 412 sq. ft  
Counted as living area: No

Heated: No  
Finished: No  
Enclosed: Yes  
Contiguous: Yes  
Permitted: Yes  
Wet space: No  
Addition: No  
Conversion: No

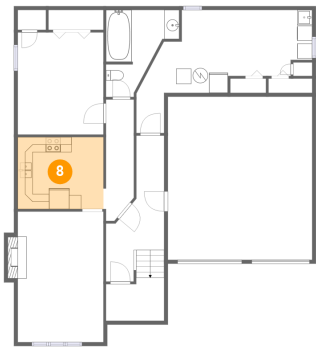
7 Floor 1 - Bath



Dimensions: 9'8" x 11'4"  
Area: 78 sq. ft  
Counted as living area: Yes

Heated: Yes  
Finished: Yes  
Enclosed: Yes  
Contiguous: Yes  
Permitted: Yes  
Wet space: Yes  
Addition: No  
Conversion: No

8 Floor 1 - Kitchen



Dimensions: 11'4" x 9'6"  
Area: 108 sq. ft  
Counted as living area: Yes

Heated: Yes  
Finished: Yes  
Enclosed: Yes  
Contiguous: Yes  
Permitted: Yes  
Wet space: No  
Addition: No  
Conversion: No



21 Imperial Crescent,Bradford,ON,CA

9 Floor 2 - Primary Bedroom



Dimensions: 11'0" x 14'2"  
Area: 156 sq. ft  
Counted as living area: Yes

Heated: Yes  
Finished: Yes  
Enclosed: Yes  
Contiguous: Yes  
Permitted: Yes  
Wet space: No  
Addition: No  
Conversion: No

10 Floor 2 - Bedroom



Dimensions: 10'7" x 14'2"  
Area: 134 sq. ft  
Counted as living area: Yes

Heated: Yes  
Finished: Yes  
Enclosed: Yes  
Contiguous: Yes  
Permitted: Yes  
Wet space: No  
Addition: No  
Conversion: No

11 Floor 2 - Bedroom



Dimensions: 9'1" x 14'2"  
Area: 117 sq. ft  
Counted as living area: Yes

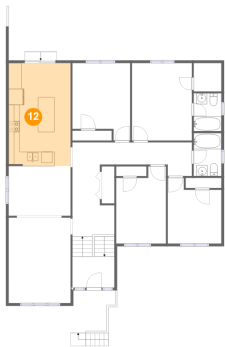
Heated: Yes  
Finished: Yes  
Enclosed: Yes  
Contiguous: Yes  
Permitted: Yes  
Wet space: No  
Addition: No  
Conversion: No





21 Imperial Crescent,Bradford,ON,CA

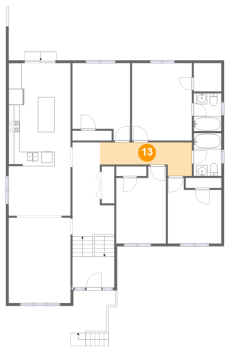
12 Floor 2 - Kitchen



Dimensions: 11'4" x 18'10"  
Area: 213 sq. ft  
Counted as living area: Yes

Heated: Yes  
Finished: Yes  
Enclosed: Yes  
Contiguous: Yes  
Permitted: Yes  
Wet space: No  
Addition: No  
Conversion: No

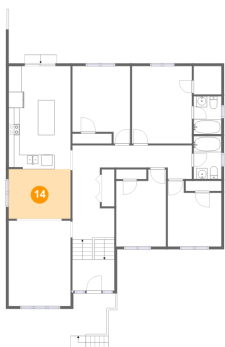
13 Floor 2 - Hall



Dimensions: 16'10" x 6'2"  
Area: 78 sq. ft  
Counted as living area: Yes

Heated: Yes  
Finished: Yes  
Enclosed: Yes  
Contiguous: Yes  
Permitted: Yes  
Wet space: No  
Addition: No  
Conversion: No

14 Floor 2 - Dining Area



Dimensions: 11'4" x 9'1"  
Area: 103 sq. ft  
Counted as living area: Yes

Heated: Yes  
Finished: Yes  
Enclosed: Yes  
Contiguous: Yes  
Permitted: Yes  
Wet space: No  
Addition: No  
Conversion: No



21 Imperial Crescent,Bradford,ON,CA

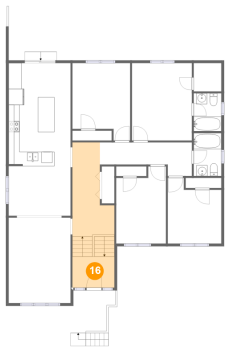
15 Floor 2 - Porch



Dimensions: 14'0" x 7'9"  
Area: 111 sq. ft  
Counted as living area: No

Heated: No  
Finished: Yes  
Enclosed: No  
Contiguous: Yes  
Permitted: Yes  
Wet space: No  
Addition: No  
Conversion: No

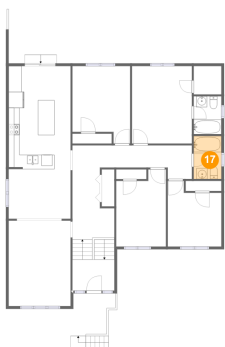
16 Floor 2 - Foyer



Dimensions: 7'8" x 26'7"  
Area: 174 sq. ft  
Counted as living area: Yes

Heated: Yes  
Finished: Yes  
Enclosed: Yes  
Contiguous: Yes  
Permitted: Yes  
Wet space: No  
Addition: No  
Conversion: No

17 Floor 2 - Bath



Dimensions: 5'1" x 7'10"  
Area: 40 sq. ft  
Counted as living area: Yes

Heated: Yes  
Finished: Yes  
Enclosed: Yes  
Contiguous: Yes  
Permitted: Yes  
Wet space: Yes  
Addition: No  
Conversion: No



21 Imperial Crescent,Bradford,ON,CA

18 Floor 2 - Living Room



Dimensions: 11'4" x 15'7"  
Area: 178 sq. ft  
Counted as living area: Yes

Heated: Yes  
Finished: Yes  
Enclosed: Yes  
Contiguous: Yes  
Permitted: Yes  
Wet space: No  
Addition: No  
Conversion: No

19 Floor 2 - W.I.C.



Dimensions: 5'0" x 5'2"  
Area: 26 sq. ft  
Counted as living area: Yes

Heated: Yes  
Finished: Yes  
Enclosed: Yes  
Contiguous: Yes  
Permitted: Yes  
Wet space: No  
Addition: No  
Conversion: No

20 Floor 2 - Bath



Dimensions: 5'1" x 6'11"  
Area: 35 sq. ft  
Counted as living area: Yes

Heated: Yes  
Finished: Yes  
Enclosed: Yes  
Contiguous: Yes  
Permitted: Yes  
Wet space: Yes  
Addition: No  
Conversion: No



21 Imperial Crescent,Bradford,ON,CA

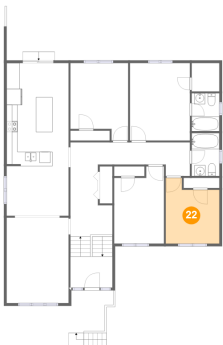
21 Floor 2 - Patio



Dimensions: 20'8" x 9'10"  
Area: 206 sq. ft  
Counted as living area: No

Heated: No  
Finished: Yes  
Enclosed: No  
Contiguous: Yes  
Permitted: Yes  
Wet space: No  
Addition: No  
Conversion: No

22 Floor 2 - Bedroom



Dimensions: 9'10" x 12'0"  
Area: 103 sq. ft  
Counted as living area: Yes

Heated: Yes  
Finished: Yes  
Enclosed: Yes  
Contiguous: Yes  
Permitted: Yes  
Wet space: No  
Addition: No  
Conversion: No