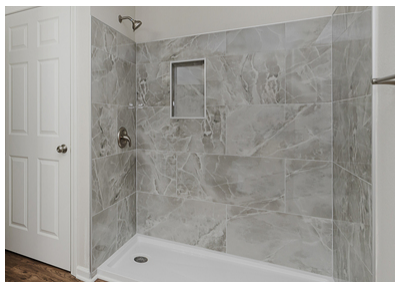
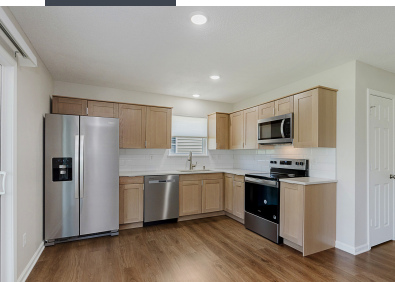


7256 High Timber Ln
Indianapolis, IN 46235



PENNY DUNN HOMES
CENTURY 21[®] Scheetz




- This beautifully updated 4-bedroom, 2.5-bath home offers the perfect blend of style, comfort, and modern convenience. From the moment you arrive, you'll notice the care that's gone into every upgrade-starting with a brand-new roof, gutters, HVAC system, and garage door. Step inside to fresh paint and new flooring throughout, setting the stage for a warm and welcoming interior. The kitchen is all new and ready for gatherings, featuring custom tile work, updated cabinetry, and a layout that flows easily into the living and dining spaces. The bathrooms are equally impressive, with stylish custom tile and sleek finishes that bring a spa-like feel to everyday routines. One of the best features? A screened-in porch overlooking a peaceful pond-your own private retreat for morning coffee, evening sunsets, or simply relaxing with a book. This home offers the beauty of a full renovation with nothing left to do but move in and enjoy.
-
-



PENNY DUNN
REALTOR[®]/Broker
(317) 508-4908
pdunn@c21scheetz.com
Pennydunnhomes.com
270 E Carmel Drive
Carmel, IN 46032

CENTURY 21[®] Scheetz

Equal housing opportunity.  Each office is independently owned and operated. 