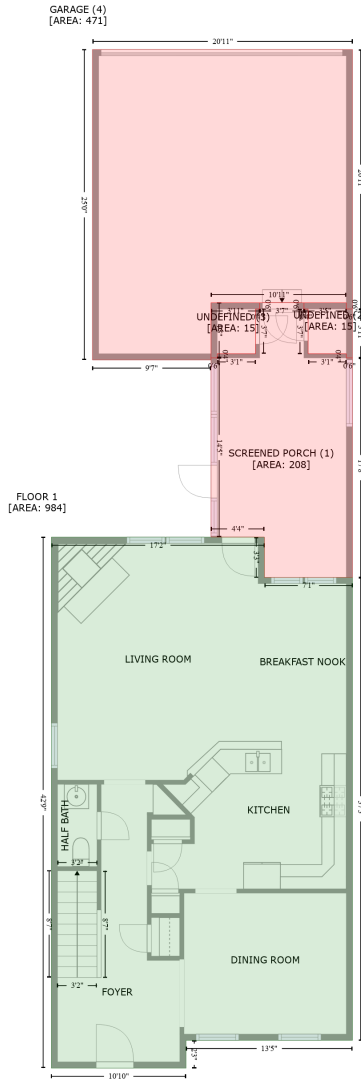


# 1114 Pegasus Drive Northwest, Huntsville, Madison County, Alabama, United States, 35806

Gross Living Area: 1991 sq. ft



Space	Area (sq. ft)	Calculation <small>Coordinate Polygon Area Algorithm using inches</small>
FLOOR 1 (Living area)	984	$-((605.2 + 605.2) * (155.2 - 194.1) + (605.2 + 690.4) * (194.1 - 194.1) + (690.4 + 690.4) * (194.1 - 641.3) + (690.4 + 529.5) * (641.3 - 641.3) + (529.5 + 529.5) * (641.3 - 668) + (529.5 + 399.2) * (668 - 668) + (399.2 + 399.2) * (668 - 155.2) + (399.2 + 605.2) * (155.2 - 155.2)) * 0.5 + 0.00694$
SCREENED PORCH (Non-living area)	208	$-((643.4 + 643.4) * (-71 - -65) + (643.4 + 647.4) * (-65 - -65) + (647.4 + 647.4) * (-65 - -21.8) + (647.4 + 684.4) * (-21.8 - -21.8) + (684.4 + 684.4) * (-21.8 - -17.8) + (684.4 + 690.4) * (-17.8 - -17.8) + (690.4 + 690.4) * (-17.8 - 194.1) + (690.4 + 605.2) * (194.1 - 194.1) + (605.2 + 605.2) *$

# 1114 Pegasus Drive Northwest, Huntsville, Madison County, Alabama, United States, 35806

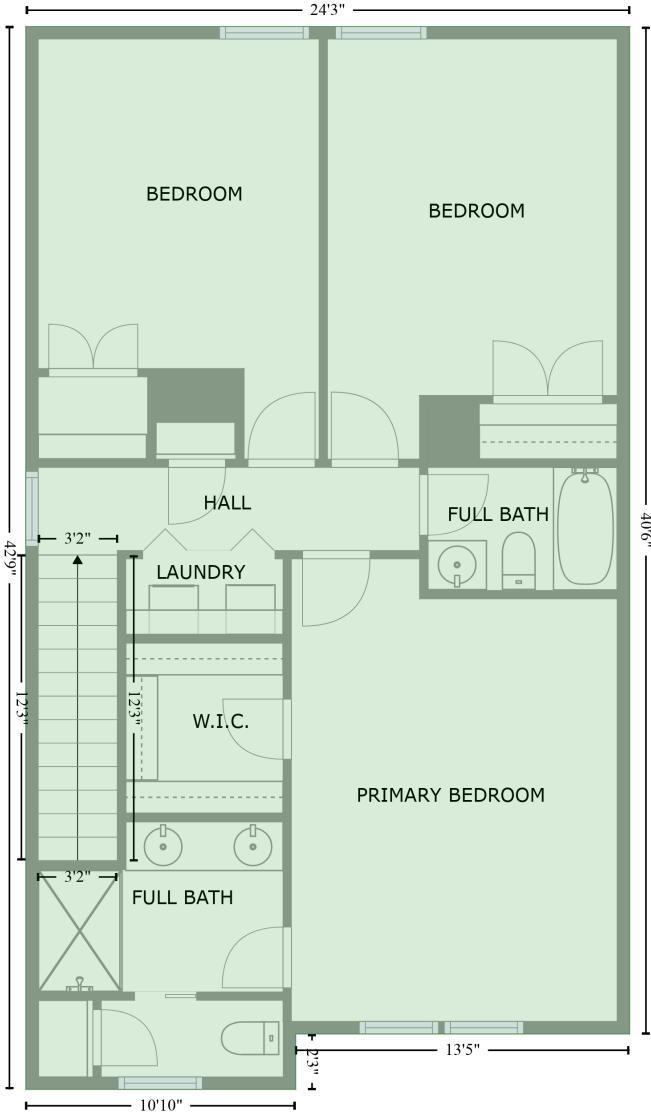
Gross Living Area: 1991 sq. ft

Space	Area (sq. ft)	Calculation <small>Coordinate Polygon Area Algorithm using inches</small>
		$(194.1 - 155.2) + (605.2 + 553.6) * (155.2 - 155.2) + (553.6 + 553.6) * (155.2 - -17.8) + (553.6 + 559.6) * (-17.8 - -17.8) + (559.6 + 559.6) * (-17.8 - -21.8) + (559.6 + 596.6) * (-21.8 - -21.8) + (596.6 + 596.6) * (-21.8 - -65) + (596.6 + 600.6) * (-65 - -65) + (600.6 + 600.6) * (-65 - -71) + (600.6 + 643.4) * (-71 - -71)) * 0.5 * 0.00694$
UNDEFINED (Non-living area)	15	$-((684.4 + 684.4) * (-71 - -65) + (684.4 + 690.4) * (-65 - -65) + (690.4 + 690.4) * (-65 - -17.8) + (690.4 + 684.4) * (-17.8 - -17.8) + (684.4 + 684.4) * (-17.8 - -21.8) + (684.4 + 647.4) * (-21.8 - -21.8) + (647.4 + 647.4) * (-21.8 - -65) + (647.4 + 643.4) * (-65 - -65) + (643.4 + 643.4) * (-65 - -71) + (643.4 + 684.4) * (-71 - -71)) * 0.5 * 0.00694$
UNDEFINED (Non-living area)	15	$-((600.6 + 600.6) * (-71 - -65) + (600.6 + 596.6) * (-65 - -65) + (596.6 + 596.6) * (-65 - -21.8) + (596.6 + 559.6) * (-21.8 - -21.8) + (559.6 + 559.6) * (-21.8 - -17.8) + (559.6 + 553.6) * (-17.8 - -17.8) + (553.6 + 553.6) * (-17.8 - -71) + (553.6 + 600.6) * (-71 - -71)) * 0.5 * 0.00694$
GARAGE (Non-living area)	471	$-((690.4 + 690.4) * (-315.6 - -65) + (690.4 + 684.4) * (-65 - -65) + (684.4 + 684.4) * (-65 - -71) + (684.4 + 553.6) * (-71 - -71) + (553.6 + 553.6) * (-71 - -15.8) + (553.6 + 439) * (-15.8 - -15.8) + (439 + 439) * (-15.8 - -315.6) + (439 + 690.4) * (-315.6 - -315.6)) * 0.5 * 0.00694$

# 1114 Pegasus Drive Northwest, Huntsville, Madison County, Alabama, United States, 35806

Gross Living Area: 1991 sq. ft

FLOOR 2  
[AREA: 1007]



Space	Area (sq. ft)	Calculation <small>Coordinate Polygon Area Algorithm using inches</small>
FLOOR 2 (Living area)	1007	$-\left((660.9 + 660.9) * (155.6 - 641.6) + (660.9 + 499.9) * (641.6 - 641.6) + (499.9 + 499.9) * (641.6 - 668.4) + (499.9 + 369.8) * (668.4 - 668.4) + (369.8 + 369.8) * (668.4 - 155.6) + (369.8 + 660.9) * (155.6 - 155.6)\right) * 0.5 * 0.00694$