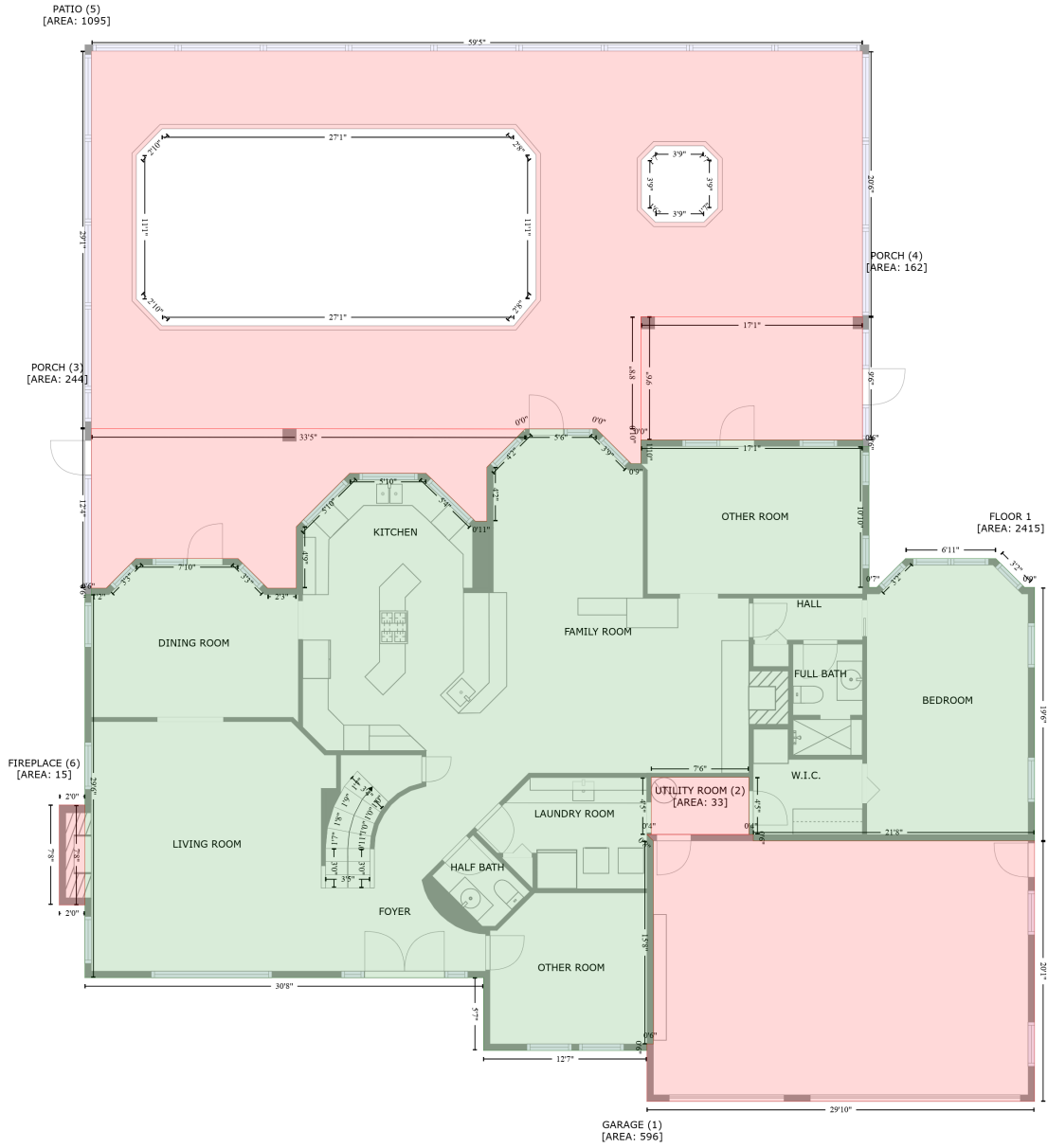


101 Ponce De Leon Boulevard, Belleair, Pinellas County, Florida, United States, 33756

Gross Living Area: 3881 sq. ft



Space	Area (sq. ft)	Calculation
FLOOR 1 (Living area)	2415	Coordinate Polygon Area Algorithm using inches $ \begin{aligned} & -((488 + 488.2) * (356.2 - 356.3) + (488.2 + 498.1) * (356.3 - 366.4) + (498.1 + 520.1) * (366.4 - 388.2) + (520.1 + 520.1) * (388.2 - 388.4) + (520.1 + 529.2) * (388.4 - 388.4) + (529.2 + 529.2) * \\ & (388.4 - 366.4) + (529.2 + 734) * (366.4 - 366.4) + (734 + 734) * (366.4 - 372.4) + (734 + 740) * (372.4 - 372.4) + (740 + 740) * (372.4 - 502.8) + (740 + 747.2) * (502.8 - 502.8) + (747.2 + 773.8) * \\ & (502.8 - 476.2) + (773.8 + 857.2) * (476.2 - 476.2) + (857.2 + 883.9) * (476.2 - 502.8) + (883.9 + 893.2) * (502.8 - 502.8) + (893.2 + 893.2) * (502.8 - 737.3) + (893.2 + 633) * (737.3 - 737.3) + \\ & (633 + 633) * (737.3 - 731.3) + (633 + 629) * (731.3 - 731.3) + (629 + 629) * (731.3 - 678.5) + \end{aligned} $

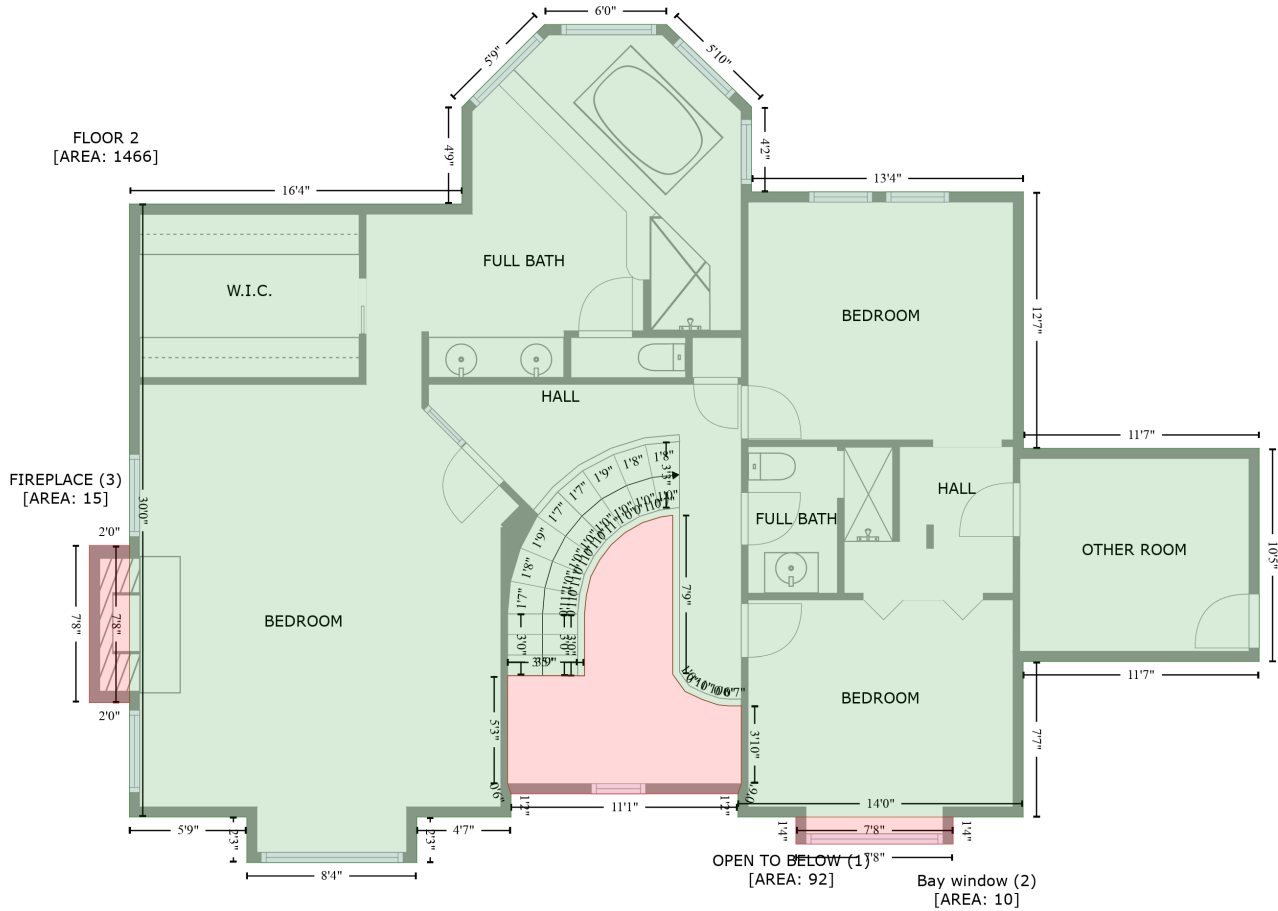
101 Ponce De Leon Boulevard, Belleair, Pinellas County, Florida, United States, 33756

Gross Living Area: 3881 sq. ft

Space	Area (sq. ft)	Calculation <small>Coordinate Polygon Area Algorithm using inches</small>
		$(629 + 538.7) * (678.5 - 678.5) + (538.7 + 538.7) * (678.5 - 731.3) + (538.7 + 534.7) * (731.3 - 731.3) + (534.7 + 540.7) * (731.3 - 737.3) + (540.7 + 540.7) * (737.3 - 925.1) + (540.7 + 534.7) * (925.1 - 925.1) + (534.7 + 534.7) * (925.1 - 931.1) + (534.7 + 383.6) * (931.1 - 931.1) + (383.6 + 383.6) * (931.1 - 863.8) + (383.6 + 15.1) * (863.8 - 863.8) + (15.1 + 15.1) * (863.8 - 509.5) + (15.1 + 21.1) * (509.5 - 509.5) + (21.1 + 21.1) * (509.5 - 503.5) + (21.1 + 34.8) * (503.5 - 503.5) + (34.8 + 48.4) * (503.5 - 489.8) + (48.4 + 62.2) * (489.8 - 476.2) + (62.2 + 156.7) * (476.2 - 476.2) + (156.7 + 184) * (476.2 - 503.5) + (184 + 210.5) * (503.5 - 503.5) + (210.5 + 210.5) * (503.5 - 446.7) + (210.5 + 235) * (446.7 - 422) + (235 + 259.9) * (422 - 397.3) + (259.9 + 330.4) * (397.3 - 397.3) + (330.4 + 353.1) * (397.3 - 419.3) + (353.1 + 376.1) * (419.3 - 441.6) + (376.1 + 386.7) * (441.6 - 441.6) + (386.7 + 386.7) * (441.6 - 391.7) + (386.7 + 422.2) * (391.7 - 356.2) + (422.2 + 488) * (356.2 - 356.2) * 0.5 * 0.00694$
GARAGE (Non-living area)	596	$-((633 + 633) * (731.3 - 737.3) + (633 + 893.2) * (737.3 - 737.3) + (893.2 + 893.2) * (737.3 - 978.2) + (893.2 + 534.7) * (978.2 - 978.2) + (534.7 + 534.7) * (978.2 - 925.1) + (534.7 + 540.7) * (925.1 - 925.1) + (540.7 + 540.7) * (925.1 - 737.3) + (540.7 + 534.7) * (737.3 - 731.3) + (534.7 + 633) * (731.3 - 731.3)) * 0.5 * 0.00694$
UTILITY ROOM (Non-living area)	33	$-((629 + 629) * (678.5 - 731.3) + (629 + 534.7) * (731.3 - 731.3) + (534.7 + 538.7) * (731.3 - 731.3) + (538.7 + 538.7) * (731.3 - 678.5) + (538.7 + 629) * (678.5 - 678.5)) * 0.5 * 0.00694$
PORCH (Non-living area)	244	$-((21.1 + 422) * (355.9 - 356.3) + (422 + 386.7) * (356.3 - 391.7) + (386.7 + 386.7) * (391.7 - 441.6) + (386.7 + 376.1) * (441.6 - 441.6) + (376.1 + 330.4) * (441.6 - 397.3) + (330.4 + 259.9) * (397.3 - 397.3) + (259.9 + 210.5) * (397.3 - 446.7) + (210.5 + 210.5) * (446.7 - 503.5) + (210.5 + 184) * (503.5 - 503.5) + (184 + 156.7) * (503.5 - 476.2) + (156.7 + 62.2) * (476.2 - 476.2) + (62.2 + 34.9) * (476.2 - 503.5) + (34.9 + 21.1) * (503.5 - 503.5) + (21.1 + 21.1) * (503.5 - 355.9)) * 0.5 * 0.00694$
PORCH (Non-living area)	162	$-((734 + 734) * (252.4 - 366.4) + (734 + 529.2) * (366.4 - 366.4) + (529.2 + 529.3) * (366.4 - 252.4) + (529.3 + 734) * (252.4 - 252.4)) * 0.5 * 0.00694$
PATIO (Non-living area)	1095	$-((734 + 734) * (6.8 - 252.4) + (734 + 529.3) * (252.4 - 252.4) + (529.3 + 529.1) * (252.4 - 356.3) + (529.1 + 529.2) * (356.3 - 366.4) + (529.2 + 529.2) * (366.4 - 366.4) + (529.2 + 529.2) * (366.4 - 388.4) + (529.2 + 520.1) * (388.4 - 388.4) + (520.1 + 488.2) * (388.4 - 356.3) + (488.2 + 488) * (356.3 - 356.2) + (488 + 422.2) * (356.2 - 356.2) + (422.2 + 422) * (356.2 - 356.3) + (422 + 21.1) * (356.3 - 355.9) + (21.1 + 21.1) * (355.9 - 6.8) + (21.1 + 734) * (6.8 - 6.8)) * 0.5 * 0.00694 + -((411.7 + 86.4) * (78.6 - 78.6) + (86.4 + 62.6) * (78.6 - 102.9) + (62.6 + 62.6) * (102.9 - 236.1) + (62.6 + 86.4) * (236.1 - 260.8) + (86.4 + 411.7) * (260.8 - 260.8) + (411.7 + 432.3) * (260.8 - 236.1) + (432.3 + 432.3) * (236.1 - 102.9) + (432.3 + 411.7) * (102.9 - 78.6)) * 0.5 * 0.00694 + -((587.2 + 542.6) * (94.3 - 94.3) + (542.6 + 529.6) * (94.3 - 107.5) + (529.6 + 529.6) * (107.5 - 152.1) + (529.6 + 542.6) * (152.1 - 165.1) + (542.6 + 587.2) * (165.1 - 165.1) + (587.2 + 600.4) * (165.1 - 152.1) + (600.4 + 600.4) * (152.1 - 107.5) + (600.4 + 587.2) * (107.5 - 94.3)) * 0.5 * 0.00694$
FIREPLACE (Non-living area)	15	$-((15.1 + 15.1) * (704 - 796.5) + (15.1 + -8.6) * (796.5 - 796.5) + (-8.6 + -8.6) * (796.5 - 704) + (-8.6 + 15.1) * (704 - 704)) * 0.5 * 0.00694$

101 Ponce De Leon Boulevard, Belleair, Pinellas County, Florida, United States, 33756

Gross Living Area: 3881 sq. ft



Space	Area (sq. ft)	Calculation
FLOOR 2 (Living area)	1466	Coordinate Polygon Area Algorithm using inches $-((331 + 381) * (398 - 446.4) + (381 + 381) * (446.4 - 496.4) + (381 + 540.9) * (496.4 - 496.4) + (540.9 + 540.9) * (496.4 - 647.1) + (540.9 + 679.5) * (647.1 - 647.1) + (679.5 + 679.5) * (647.1 - 772.4) + (679.5 + 540.7) * (772.4 - 772.4) + (540.7 + 540.7) * (772.4 - 863.8) + (540.7 + 373) * (863.8 - 863.8) + (373 + 373) * (863.8 - 850.1) + (373 + 375) * (850.1 - 844.1) + (375 + 375) * (844.1 - 798.5) + (375 + 367.5) * (798.5 - 798.5) + (367.5 + 361.1) * (798.5 - 797.8) + (361.1 + 351.9) * (797.8 - 794.6) + (351.9 + 341.9) * (794.6 - 790) + (341.9 + 334.7) * (790 - 779.9) + (334.7 + 334.7) * (779.9 - 686.4) + (334.7 + 327.6) * (686.4 - 687.4) + (327.6 + 316.8) * (687.4 - 690.8) + (316.8 + 306.6) * (690.8 - 696.6) + (306.6 + 298.4) * (696.6 - 703.8) + (298.4 + 291.8) * (703.8 - 712.5) + (291.8 + 286.5) * (712.5 - 722.5) + (286.5 + 283.9) * (722.5 - 733.6) + (283.9 + 282.8) * (733.6 - 744.6) + (282.8 + 282.8) * (744.6 - 780.8) + (282.8 + 237.5) * (780.8 - 780.8) + (237.5 + 237.5) * (780.8 - 844.1) + (237.5 + 239.6) * (844.1 - 850.1) + (239.6 + 239.6) * (850.1 - 863.8) + (239.6 + 184.2) * (863.8 - 863.8) + (184.2 + 184.2) * (863.8 - 890.5) + (184.2 + 84.2) * (890.5 - 890.5) + (84.2 + 84.2) * (890.5 - 863.8) + (84.2 + 15.1) * (863.8 - 863.8) + (15.1 + 15.1) * (863.8 - 503.5) + (15.1 + 210.7) * (503.5 - 503.5) + (210.7 + 210.7) * (503.5 - 446.5) + (210.7 + 259.2) * (446.5 - 398) + (259.2 + 331) * (398 - 398)) * 0.5 + 0.00694$
OPEN TO BELOW (Non-living area)	92	$-((334.7 + 334.7) * (686.4 - 779.9) + (334.7 + 341.9) * (779.9 - 790) + (341.9 + 351.9) * (790 - 794.6) + (351.9 + 361.1) * (794.6 - 797.8) + (361.1 + 367.5) * (797.8 - 798.5) + (367.5 + 375) * (798.5 - 798.5) + (375 + 375) * (798.5 - 844.1) + (375 + 373) * (844.1 - 850.1) + (373 + 239.6) * (850.1 - 863.8) + (239.6 + 184.2) * (863.8 - 863.8) + (184.2 + 84.2) * (890.5 - 890.5) + (84.2 + 15.1) * (863.8 - 863.8) + (15.1 + 15.1) * (863.8 - 503.5) + (15.1 + 210.7) * (503.5 - 503.5) + (210.7 + 210.7) * (503.5 - 446.5) + (210.7 + 259.2) * (446.5 - 398) + (259.2 + 331) * (398 - 398)) * 0.5 + 0.00694$

101 Ponce De Leon Boulevard, Belleair, Pinellas County, Florida, United States, 33756

Gross Living Area: 3881 sq. ft

Space	Area (sq. ft)	Calculation <small>Coordinate Polygon Area Algorithm using inches</small>
		$(850.1 - 850.1) + (239.6 + 237.5) * (850.1 - 844.1) + (237.5 + 237.5) * (844.1 - 780.8) + (237.5 + 282.8) * (780.8 - 780.8) + (282.8 + 282.8) * (780.8 - 744.6) + (282.8 + 283.9) * (744.6 - 733.6) + (283.9 + 286.5) * (733.6 - 722.5) + (286.5 + 291.8) * (722.5 - 712.5) + (291.8 + 298.4) * (712.5 - 703.8) + (298.4 + 306.6) * (703.8 - 696.6) + (306.6 + 316.8) * (696.6 - 690.8) + (316.8 + 327.6) * (690.8 - 687.4) + (327.6 + 334.7) * (687.4 - 686.4) * 0.5 * 0.00694$
Bay window (Non-living area)	10	$-((499.5 + 499.5) * (863.8 - 879.7) + (499.5 + 407.1) * (879.7 - 879.7) + (407.1 + 407.1) * (879.7 - 863.8) + (407.1 + 499.5) * (863.8 - 863.8)) * 0.5 * 0.00694$
FIREPLACE (Non-living area)	15	$-((15.1 + 15.1) * (704.2 - 796.5) + (15.1 + -8.4) * (796.5 - 796.5) + (-8.4 + -8.4) * (796.5 - 704.2) + (-8.4 + 15.1) * (704.2 - 704.2)) * 0.5 * 0.00694$