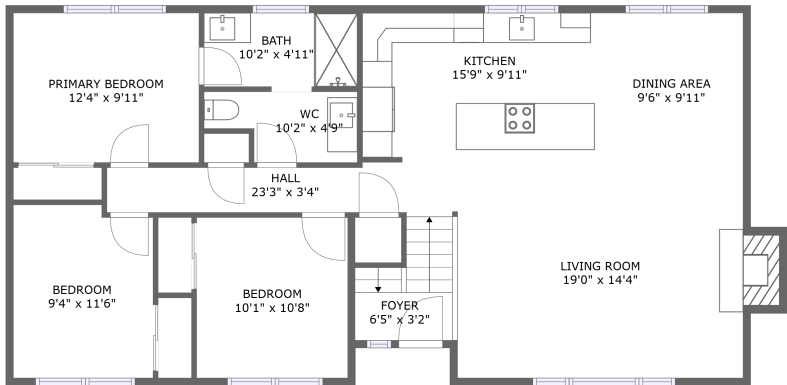
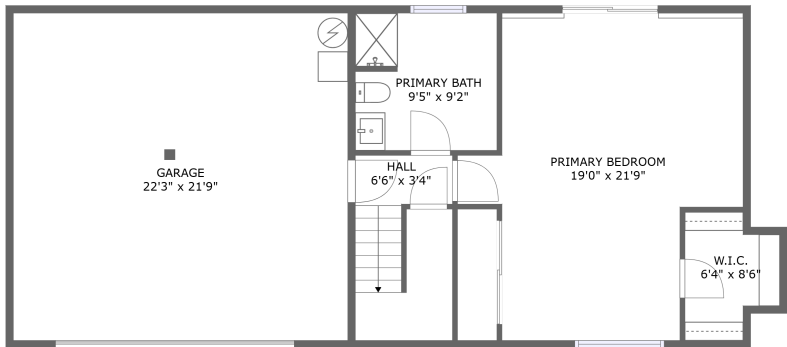


Home report

630 South 2nd Court, Cornelius, Washington County, Oregon,
United States, 97113



FLOOR 2



FLOOR 1


Total Area: 1736 sq. ft

Floor 1: 573 sq. ft, Floor 2: 1163 sq. ft

Excluded: Garage 485 sq. ft, Fireplace 14 sq. ft, Walls: 157 sq. ft

Property summary

 **2** Floors

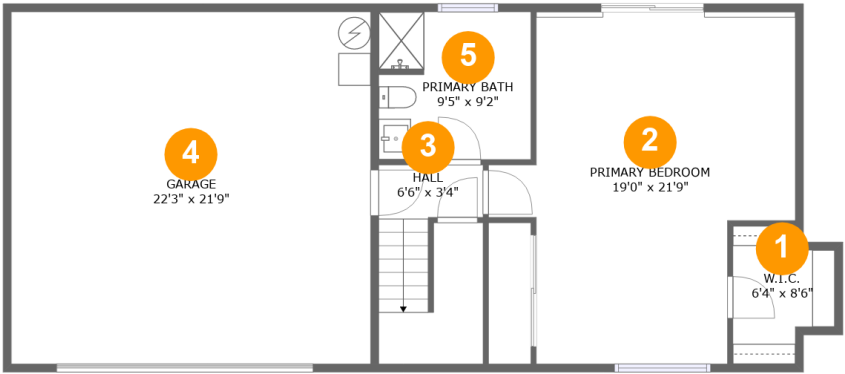
 **4** Bedrooms

 **2** Bathrooms

 **1** Garages

Home report

630 South 2nd Court, Cornelius, Washington County, Oregon,
United States, 97113



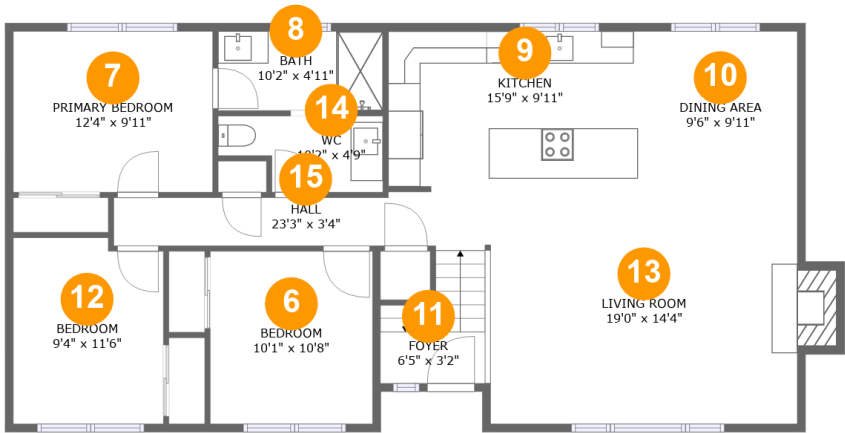
Room dimensions

Floor 1 Total:573sqft Excluded: 485sqft

#		Max Dimensions	sqft	Included
1	W.I.C.	6'4" x 8'6"	45 sq. ft	Yes
2	Primary Bedroom	19'0" x 21'9"	322 sq. ft	Yes
3	Hall	6'6" x 3'4"	77 sq. ft	Yes
4	Garage	22'3" x 21'9"	485 sq. ft	No
5	Primary Bath	9'5" x 9'2"	85 sq. ft	Yes

Home report

630 South 2nd Court, Cornelius, Washington County, Oregon,
United States, 97113



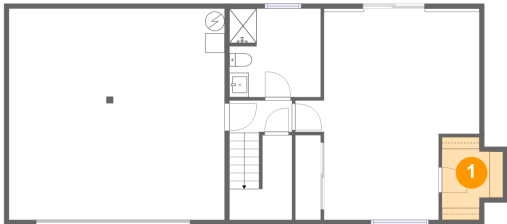
Room dimensions

Floor 2 Total:1163sqft Excluded: 14sqft

#		Max Dimensions	sqft	Included
6	Bedroom	10'1" x 10'8"	107 sq. ft	Yes
7	Primary Bedroom	12'4" x 9'11"	123 sq. ft	Yes
8	Bath	10'2" x 4'11"	50 sq. ft	Yes
9	Kitchen	15'9" x 9'11"	156 sq. ft	Yes
10	Dining Area	9'6" x 9'11"	95 sq. ft	Yes
11	Foyer	6'5" x 3'2"	45 sq. ft	Yes
12	Bedroom	9'4" x 11'6"	104 sq. ft	Yes
13	Living Room	19'0" x 14'4"	284 sq. ft	Yes
14	WC	10'2" x 4'9"	41 sq. ft	Yes
15	Hall	23'3" x 3'4"	72 sq. ft	Yes

630 South 2nd Court, Cornelius, Washington County, Oregon,
United States, 97113

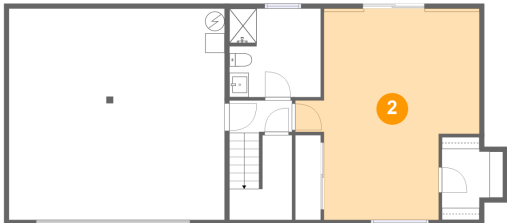
1 Floor 1 - W.I.C.



Max Dimensions: 6'4" x 8'6"
Calculated Area: 45 sq. ft
Included: Yes

Heated: Yes
Finished: Yes
Enclosed: Yes
Contiguous: Yes
Permitted: Yes
Wet space: No
Addition: No
Conversion: No

2 Floor 1 - Primary Bedroom



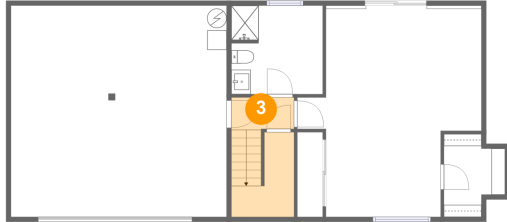
Max Dimensions: 19'0" x 21'9"
Calculated Area: 322 sq. ft
Included: Yes

Heated: Yes
Finished: Yes
Enclosed: Yes
Contiguous: Yes
Permitted: Yes
Wet space: No
Addition: No
Conversion: No

Home report

630 South 2nd Court, Cornelius, Washington County, Oregon,
United States, 97113

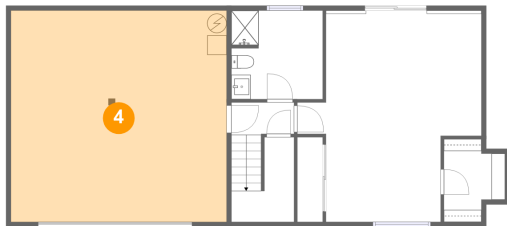
3 Floor 1 - Hall



Max Dimensions: 6'6" x 3'4"
Calculated Area: 77 sq. ft
Included: Yes

Heated: Yes
Finished: Yes
Enclosed: Yes
Contiguous: Yes
Permitted: Yes
Wet space: No
Addition: No
Conversion: No

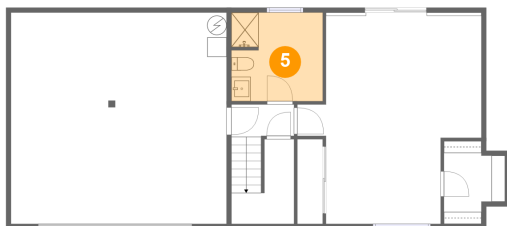
4 Floor 1 - Garage



Max Dimensions: 22'3" x 21'9"
Calculated Area: 485 sq. ft
Included: No

Heated: No
Finished: No
Enclosed: Yes
Contiguous: Yes
Permitted: Yes
Wet space: No
Addition: No
Conversion: No

5 Floor 1 - Primary Bath



Max Dimensions: 9'5" x 9'2"
Calculated Area: 85 sq. ft
Included: Yes

Heated: Yes
Finished: Yes
Enclosed: Yes
Contiguous: Yes
Permitted: Yes
Wet space: Yes
Addition: No
Conversion: No

630 South 2nd Court, Cornelius, Washington County, Oregon,
United States, 97113

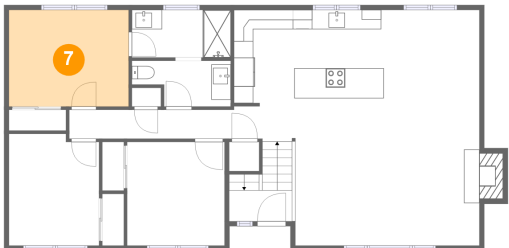
6 Floor 2 - Bedroom



Max Dimensions: 10'1" x 10'8"
Calculated Area: 107 sq. ft
Included: Yes

Heated: Yes
Finished: Yes
Enclosed: Yes
Contiguous: Yes
Permitted: Yes
Wet space: No
Addition: No
Conversion: No

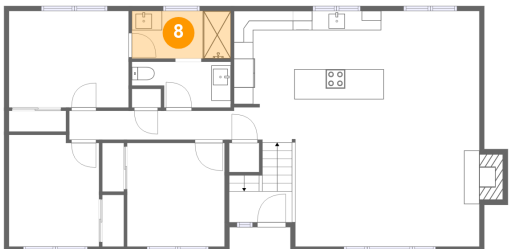
7 Floor 2 - Primary Bedroom



Max Dimensions: 12'4" x 9'11"
Calculated Area: 123 sq. ft
Included: Yes

Heated: Yes
Finished: Yes
Enclosed: Yes
Contiguous: Yes
Permitted: Yes
Wet space: No
Addition: No
Conversion: No

8 Floor 2 - Bath



Max Dimensions: 10'2" x 4'11"
Calculated Area: 50 sq. ft
Included: Yes

Heated: Yes
Finished: Yes
Enclosed: Yes
Contiguous: Yes
Permitted: Yes
Wet space: Yes
Addition: No
Conversion: No

Home report

630 South 2nd Court, Cornelius, Washington County, Oregon,
United States, 97113

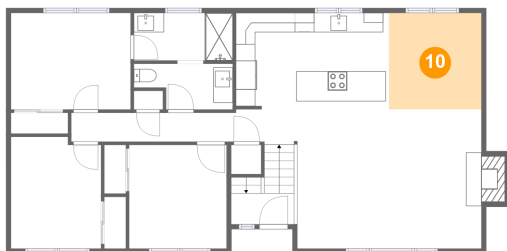
9 Floor 2 - Kitchen



Max Dimensions: 15'9" x 9'11"
Calculated Area: 156 sq. ft
Included: Yes

Heated: Yes
Finished: Yes
Enclosed: Yes
Contiguous: Yes
Permitted: Yes
Wet space: No
Addition: No
Conversion: No

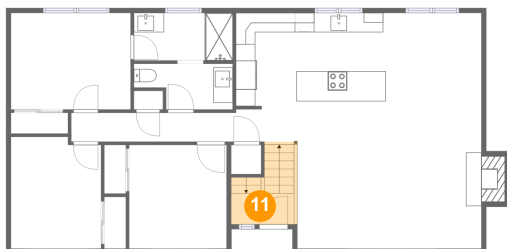
10 Floor 2 - Dining Area



Max Dimensions: 9'6" x 9'11"
Calculated Area: 95 sq. ft
Included: Yes

Heated: Yes
Finished: Yes
Enclosed: Yes
Contiguous: Yes
Permitted: Yes
Wet space: No
Addition: No
Conversion: No

11 Floor 2 - Foyer

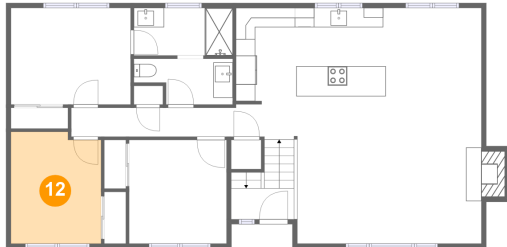


Max Dimensions: 6'5" x 3'2"
Calculated Area: 45 sq. ft
Included: Yes

Heated: Yes
Finished: Yes
Enclosed: Yes
Contiguous: Yes
Permitted: Yes
Wet space: No
Addition: No
Conversion: No

630 South 2nd Court, Cornelius, Washington County, Oregon,
United States, 97113

12 Floor 2 - Bedroom



Max Dimensions: 9'4" x
11'6"
Calculated Area: 104 sq. ft
Included: Yes

Heated: Yes
Finished: Yes
Enclosed: Yes
Contiguous:
Yes
Permitted: Yes
Wet space: No
Addition: No
Conversion: No

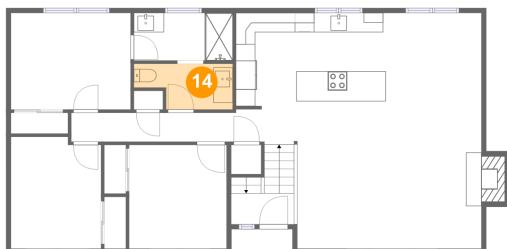
13 Floor 2 - Living Room



Max Dimensions: 19'0" x
14'4"
Calculated Area: 284 sq. ft
Included: Yes

Heated: Yes
Finished: Yes
Enclosed: Yes
Contiguous:
Yes
Permitted: Yes
Wet space: No
Addition: No
Conversion: No

14 Floor 2 - WC

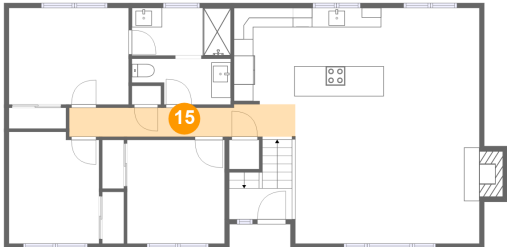


Max Dimensions: 10'2" x
4'9"
Calculated Area: 41 sq. ft
Included: Yes

Heated: Yes
Finished: Yes
Enclosed: Yes
Contiguous:
Yes
Permitted: Yes
Wet space: Yes
Addition: No
Conversion: No

630 South 2nd Court, Cornelius, Washington County, Oregon,
United States, 97113

15 Floor 2 - Hall



Max Dimensions: 23'3" x 3'4"
Calculated Area: 72 sq. ft
Included: Yes

Heated: Yes
Finished: Yes
Enclosed: Yes
Contiguous: Yes
Permitted: Yes
Wet space: No
Addition: No
Conversion: No