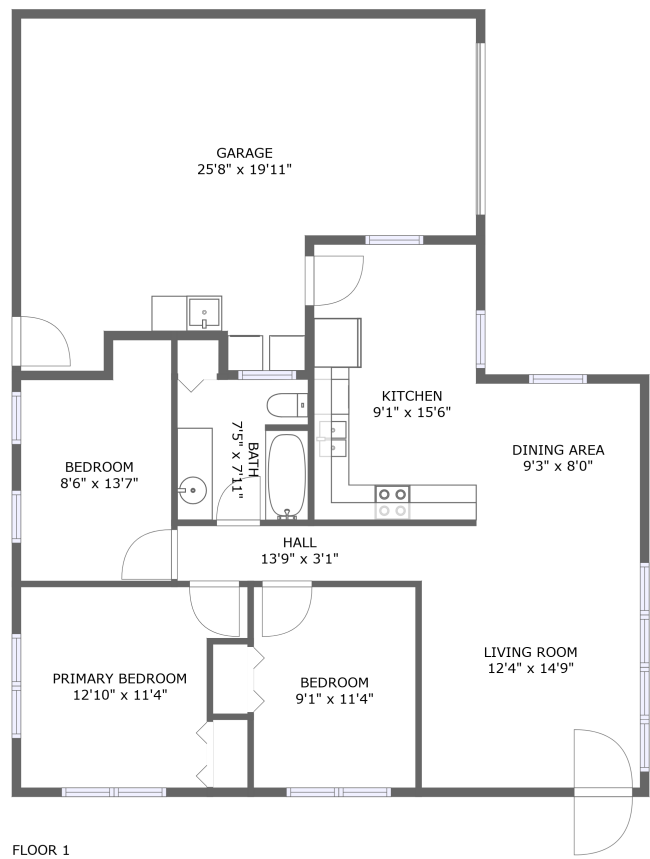


Home report

705 N Huge St,Roanoke,Virginia,United States




Total Area: 955 sq. ft

Floor 1: 955 sq. ft


Excluded: Garage 451 sq. ft

Property summary

 **1** Floors

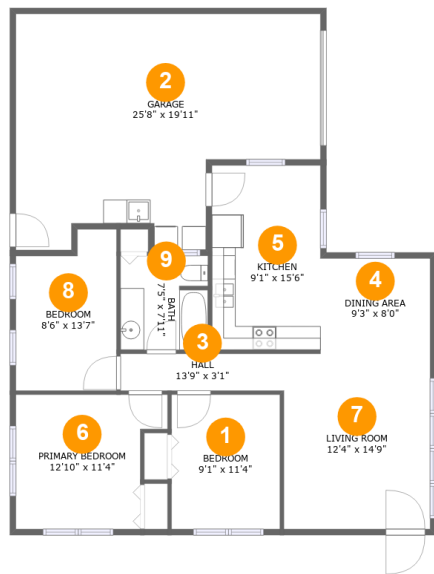
 **3** Bedrooms

 **1** Bathrooms

 **1** Garages

Home report

705 N Huge St,Roanoke,Virginia,United States

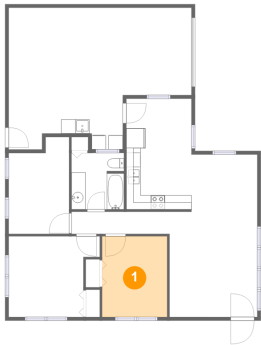


Room dimensions

Floor 1 Total:955sqft Excluded: 451sqft

#		Max Dimensions	sqft	Included
1	Bedroom	9'1" x 11'4"	104 sq. ft	Yes
2	Garage	25'8" x 19'11"	422 sq. ft	No
3	Hall	13'9" x 3'1"	43 sq. ft	Yes
4	Dining Area	9'3" x 8'0"	74 sq. ft	Yes
5	Kitchen	9'1" x 15'6"	142 sq. ft	Yes
6	Primary Bedroom	12'10" x 11'4"	126 sq. ft	Yes
7	Living Room	12'4" x 14'9"	182 sq. ft	Yes
8	Bedroom	8'6" x 13'7"	104 sq. ft	Yes
9	Bath	7'5" x 7'11"	58 sq. ft	Yes

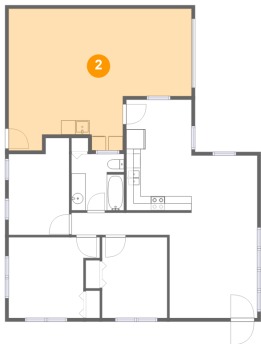
1 Floor 1 - Bedroom



Max Dimensions: 9'1" x 11'4"
Calculated Area: 104 sq. ft
Included: Yes

Heated: Yes
Finished: Yes
Enclosed: Yes
Contiguous: Yes
Permitted: Yes
Wet space: No
Addition: No
Conversion: No

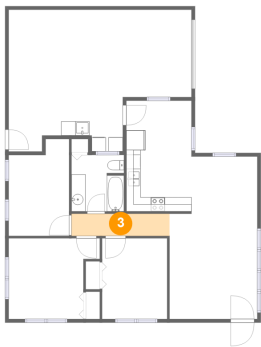
2 Floor 1 - Garage



Max Dimensions: 25'8" x 19'11"
Calculated Area: 422 sq. ft
Included: No

Heated: No
Finished: No
Enclosed: Yes
Contiguous: Yes
Permitted: Yes
Wet space: No
Addition: No
Conversion: No

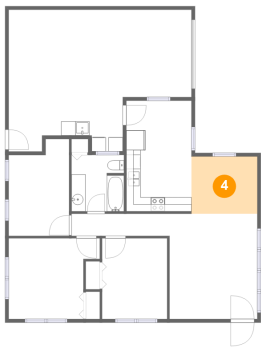
3 Floor 1 - Hall



Max Dimensions: 13'9" x 3'1"
Calculated Area: 43 sq. ft
Included: Yes

Heated: Yes
Finished: Yes
Enclosed: Yes
Contiguous: Yes
Permitted: Yes
Wet space: No
Addition: No
Conversion: No

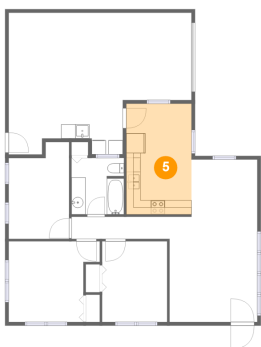
4 Floor 1 - Dining Area



Max Dimensions: 9'3" x 8'0"
Calculated Area: 74 sq. ft
Included: Yes

Heated: Yes
Finished: Yes
Enclosed: Yes
Contiguous: Yes
Permitted: Yes
Wet space: No
Addition: No
Conversion: No

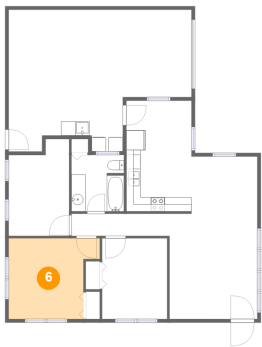
5 Floor 1 - Kitchen



Max Dimensions: 9'1" x 15'6"
Calculated Area: 142 sq. ft
Included: Yes

Heated: Yes
Finished: Yes
Enclosed: Yes
Contiguous: Yes
Permitted: Yes
Wet space: No
Addition: No
Conversion: No

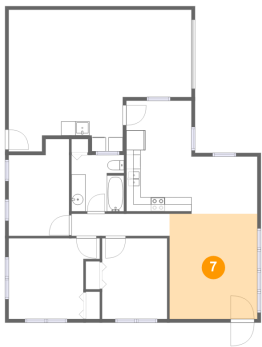
6 Floor 1 - Primary Bedroom



Max Dimensions: 12'10" x 11'4"
Calculated Area: 126 sq. ft
Included: Yes

Heated: Yes
Finished: Yes
Enclosed: Yes
Contiguous: Yes
Permitted: Yes
Wet space: No
Addition: No
Conversion: No

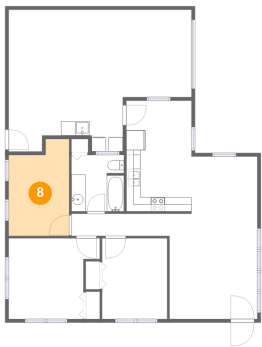
7 Floor 1 - Living Room



Max Dimensions: 12'4" x 14'9"
Calculated Area: 182 sq. ft
Included: Yes

Heated: Yes
Finished: Yes
Enclosed: Yes
Contiguous: Yes
Permitted: Yes
Wet space: No
Addition: No
Conversion: No

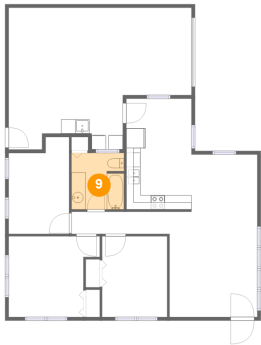
8 Floor 1 - Bedroom



Max Dimensions: 8'6" x 13'7"
Calculated Area: 104 sq. ft
Included: Yes

Heated: Yes
Finished: Yes
Enclosed: Yes
Contiguous: Yes
Permitted: Yes
Wet space: No
Addition: No
Conversion: No

9 Floor 1 - Bath



Max Dimensions: 7'5" x 7'11"

Calculated Area: 58 sq. ft

Included: Yes

Heated: Yes

Finished: Yes

Enclosed: Yes

Contiguous: Yes

Permitted: Yes

Wet space: Yes

Addition: No

Conversion: No