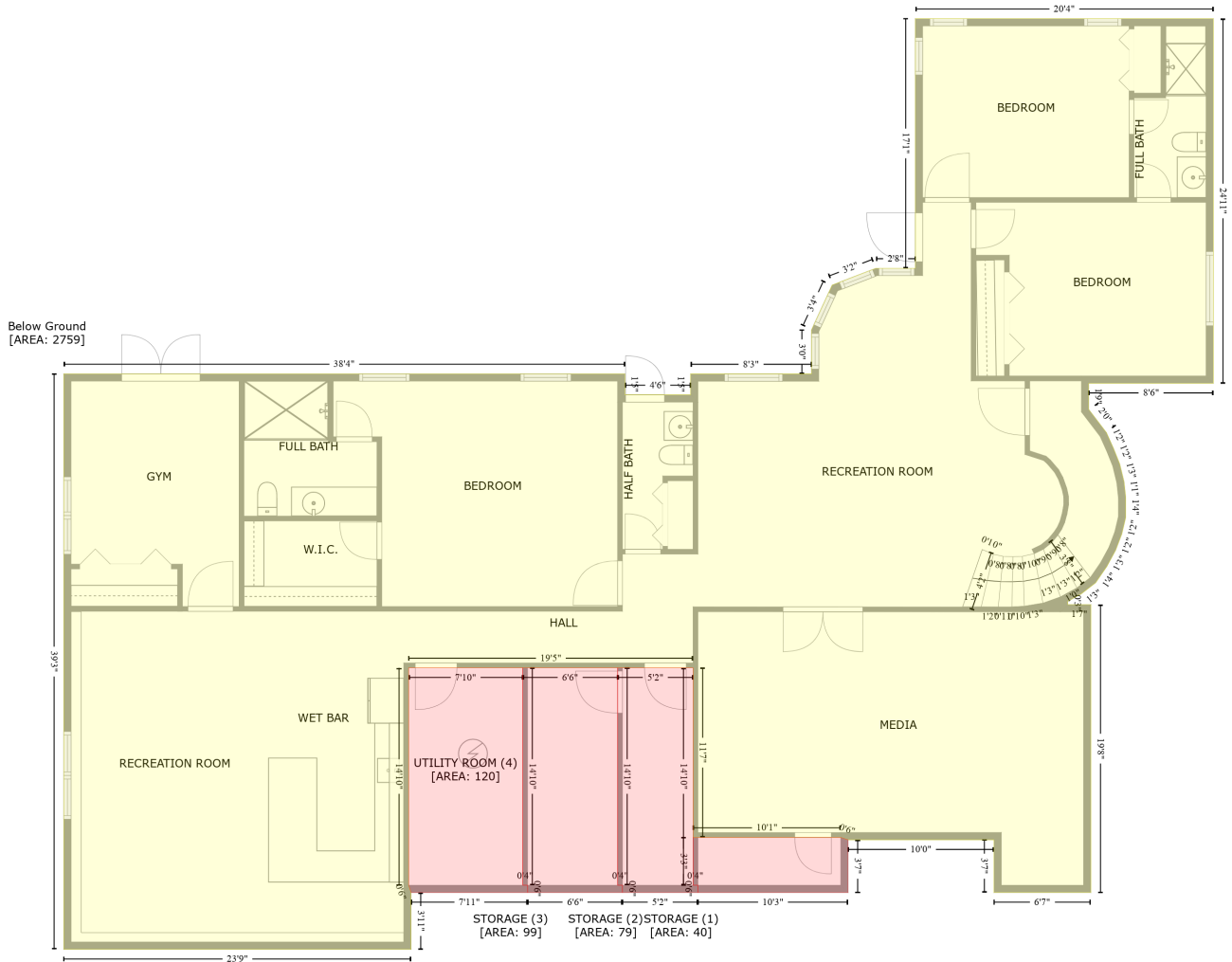


1029 Roundstone Place, Innisbrook, Palm Harbor, Pinellas County, Florida, United States, 34683

Gross Living Area: 3192 sq. ft



Space	Area (sq. ft)	Calculation
Below Ground (Living area)	2759	Coordinate Polygon Area Algorithm using inches $-((942.2 + 942.2) * (2.7 - 301.4) + (942.2 + 840) * (301.4 - 301.4) + (840 + 840) * (301.4 - 322.8) + (840 + 854.5) * (322.8 - 341.7) + (854.5 + 860.4) * (341.7 - 354.7) + (860.4 + 865.5) * (354.7 - 367.5) + (865.5 + 869) * (367.5 - 381.8) + (869 + 870.4) * (381.8 - 395.2) + (870.4 + 870.4) * (395.2 - 411.1) + (870.4 + 867.1) * (411.1 - 424.9) + (867.1 + 862.1) * (424.9 - 438.2) + (862.1 + 854.9) * (438.2 - 451.5) + (854.9 + 845.7) * (451.5 - 464.8) + (845.7 + 833.7) * (464.8 - 474) + (833.7 + 822.9) * (474 - 479.9) + (822.9 + 822.9) * (479.9 - 482.7) + (822.9 + 841.8) * (482.7 - 482.7) + (841.8 + 841.8) * (482.7 - 718.6) + (841.8 + 762.4) * (718.6 - 718.6) + (762.4 + 762.4) * (718.6 - 675.3) + (762.4 + 642.8) * (675.3 - 675.3) + (642.8 + 636.8) * (675.3 - 673.4) + (636.8 + 515.7) * (673.4 - 673.4) + (515.7 + 515.7) * (673.4 - 534.5) + (515.7 + 282.6) * (534.5 - 534.5) + (282.6 + 282.7) * (534.5 - 623.6) + (282.7 + 282.7) * (623.6 - 712.6) + (282.7 + 284.7) * (712.6 - 718.6) + (284.7 + 284.7) * (718.6 - 765.1) + (284.7 + -0.1) * (765.1 - 765.1) + (-0.1 + -0.1) * (765.1 - 293.6) + (-0.1 + 459.9) * (293.6 - 293.6) + (459.9 + 459.9) * (293.6 - 310.8) + (459.9 + 513.7) * (310.8 - 310.8) + (513.7 + 513.7) * (310.8 - 293.7) + (513.7 + 612.8) * (293.7 - 293.7) + (612.8 + 612.8) * (293.7 - 257.7) + (612.8 + 629.8) * (257.7 - 220.9) + (629.8 + 665.6) * (220.9 - 207.2) +$

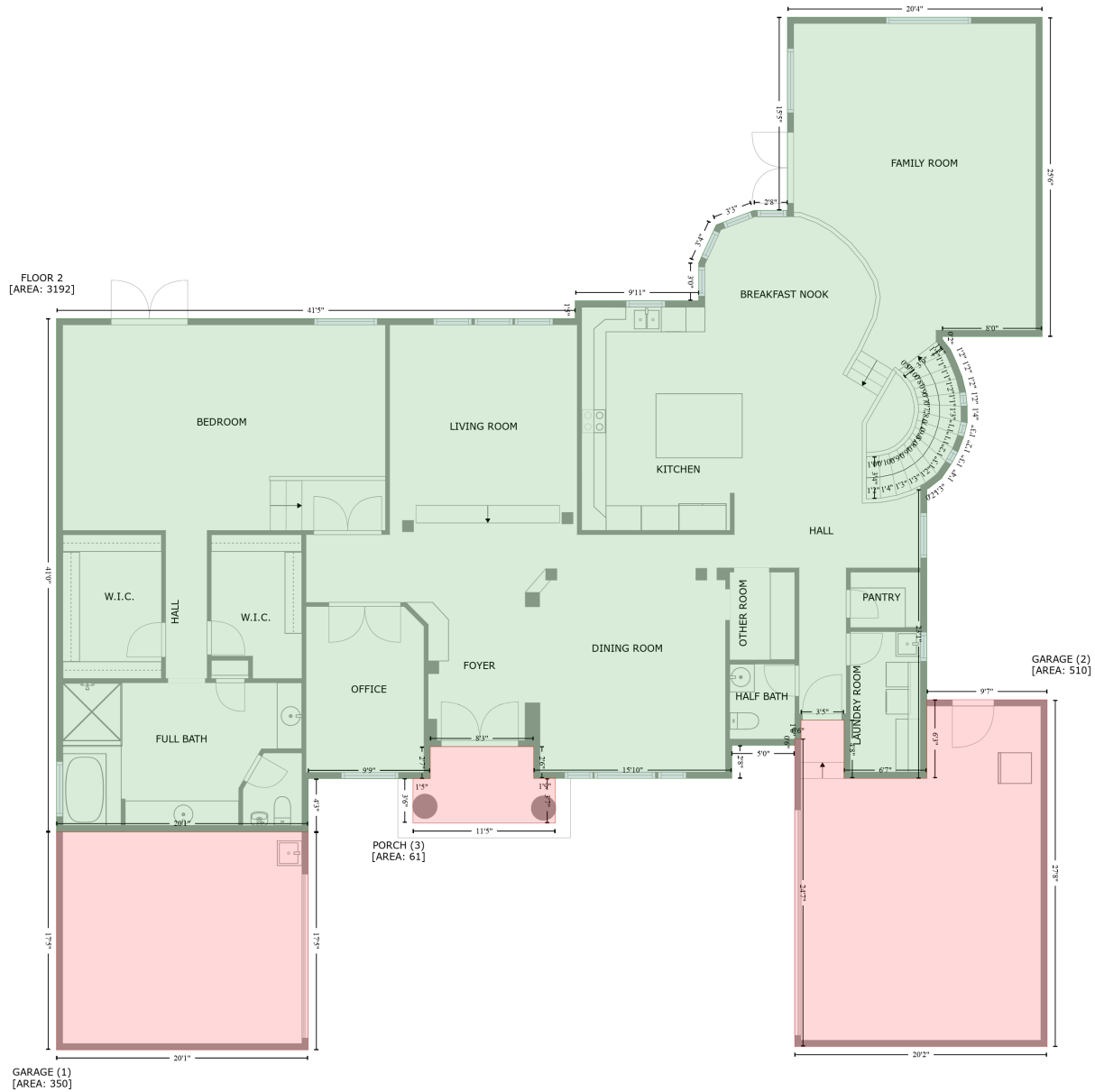
1029 Roundstone Place, Innisbrook, Palm Harbor, Pinellas County, Florida, United States, 34683

Gross Living Area: 3192 sq. ft

Space	Area (sq. ft)	Calculation <small>Coordinate Polygon Area Algorithm using inches</small>
		$(665.6 + 697.9) * (207.2 - 207.2) + (697.9 + 697.9) * (207.2 - 2.7) + (697.9 + 942.2) * (2.7 - 2.7) * 0.5 * 0.00694$
STORAGE (Non-living area)	40	$-((636.8 + 642.8) * (673.4 - 675.3) + (642.8 + 642.8) * (675.3 - 718.6) + (642.8 + 519.7) * (718.6 - 718.6) + (519.7 + 519.7) * (718.6 - 712.6) + (519.7 + 515.7) * (712.6 - 712.6) + (515.7 + 515.7) * (712.6 - 673.4) + (515.7 + 636.8) * (673.4 - 673.4)) * 0.5 * 0.00694$
STORAGE (Non-living area)	79	$-((515.7 + 515.7) * (534.5 - 712.6) + (515.7 + 519.7) * (712.6 - 712.6) + (519.7 + 519.7) * (712.6 - 718.6) + (519.7 + 457.9) * (718.6 - 718.6) + (457.9 + 457.9) * (718.6 - 712.6) + (457.9 + 453.9) * (712.6 - 712.6) + (453.9 + 453.9) * (712.6 - 534.5) + (453.9 + 515.7) * (534.5 - 534.5)) * 0.5 * 0.00694$
STORAGE (Non-living area)	99	$-((453.9 + 453.9) * (534.5 - 712.6) + (453.9 + 457.9) * (712.6 - 712.6) + (457.9 + 457.9) * (712.6 - 718.6) + (457.9 + 380.1) * (718.6 - 718.6) + (380.1 + 380.1) * (718.6 - 712.6) + (380.1 + 376.1) * (712.6 - 712.6) + (376.1 + 376.1) * (712.6 - 534.5) + (376.1 + 453.9) * (534.5 - 534.5)) * 0.5 * 0.00694$
UTILITY ROOM (Non-living area)	120	$-((376.1 + 376.1) * (534.5 - 712.6) + (376.1 + 380.1) * (712.6 - 712.6) + (380.1 + 380.1) * (712.6 - 718.6) + (380.1 + 284.7) * (718.6 - 718.6) + (284.7 + 282.7) * (718.6 - 712.6) + (282.7 + 282.6) * (712.6 - 534.5) + (282.6 + 376.1) * (534.5 - 534.5)) * 0.5 * 0.00694$

1029 Roundstone Place, Innisbrook, Palm Harbor, Pinellas County, Florida, United States, 34683

Gross Living Area: 3192 sq. ft



Space	Area (sq. ft)	Calculation
FLOOR 2 (Living area)	3192	Coordinate Polygon Area Algorithm using inches $-((942.2 + 942.2) * (22.7 - 328.8) + (942.2 + 846.5) * (328.8 - 328.8) + (846.5 + 846.5) * (328.8 - 331.3) + (846.5 + 854.4) * (331.3 - 341.5) + (854.4 + 860.4) * (341.5 - 354.7) + (860.4 + 865.5) * (354.7 - 367.7) + (865.5 + 868.9) * (367.7 - 381.8) + (868.9 + 870.3) * (381.8 - 395.2) + (870.3 + 870.4) * (395.2 - 411) + (870.4 + 867) * (411 - 425.2) + (867 + 861.9) * (425.2 - 438.5) + (861.9 + 854.7) * (438.5 - 451.6) + (854.7 + 845.7) * (451.6 - 464.9) + (845.7 + 833.7) * (464.9 - 474.1) + (833.7 + 831.6) * (474.1 - 475.2) + (831.6 + 831.6) * (475.2 - 752.5) + (831.6 + 752.3) * (752.5 - 752.5) + (752.3 + 752.3) * (752.5 - 696.6) + (752.3 + 711) * (696.6 - 696.6) + (711 + 711) *$

1029 Roundstone Place, Innisbrook, Palm Harbor, Pinellas County, Florida, United States, 34683

Gross Living Area: 3192 sq. ft

Space	Area (sq. ft)	Calculation <small>Coordinate Polygon Area Algorithm using inches</small>
		$(696.6 - 714.7) + (711 + 705) * (714.7 - 714.7) + (705 + 705) * (714.7 - 720.7) + (705 + 644.6) * (720.7 - 720.7) + (644.6 + 644.6) * (720.7 - 752.5) + (644.6 + 475.5) * (752.5 - 752.5) + (475.5 + 475.5) * (752.5 - 752.3) + (475.5 + 454.6) * (752.3 - 752.5) + (454.6 + 454.6) * (752.5 - 722) + (454.6 + 355.4) * (722 - 722) + (355.4 + 355.4) * (722 - 752.7) + (355.4 + 238.3) * (752.7 - 752.7) + (238.3 + 238.3) * (752.7 - 803.7) + (238.3 + -3.1) * (803.7 - 803.7) + (-3.1 + -3.1) * (803.7 - 311.6) + (-3.1 + 494.3) * (311.6 - 311.6) + (494.3 + 494.3) * (311.6 - 294.6) + (494.3 + 612.8) * (294.6 - 294.6) + (612.8 + 612.8) * (294.6 - 258.3) + (612.8 + 629.7) * (258.3 - 221.8) + (629.7 + 665.6) * (221.8 - 208) + (665.6 + 697.9) * (208 - 208) + (697.9 + 697.9) * (208 - 22.7) + (697.9 + 942.2) * (22.7 - 22.7) * 0.5 * 0.00694$
GARAGE (Non-living area)	350	$-((238.3 + 238.3) * (803.7 - 1012.7) + (238.3 + -3.1) * (1012.7 - 1012.7) + (-3.1 + -3.1) * (1012.7 - 803.7) + (-3.1 + 238.3) * (803.7 - 803.7)) * 0.5 * 0.00694$
GARAGE (Non-living area)	510	$-((946.9 + 946.9) * (677.1 - 1009.5) + (946.9 + 705) * (1009.5 - 1009.5) + (705 + 705) * (1009.5 - 714.7) + (705 + 711) * (714.7 - 714.7) + (711 + 711) * (714.7 - 696.6) + (711 + 752.3) * (696.6 - 696.6) + (752.3 + 752.3) * (696.6 - 752.5) + (752.3 + 831.6) * (752.5 - 752.5) + (831.6 + 831.6) * (752.5 - 677.1) + (831.6 + 946.9) * (677.1 - 677.1)) * 0.5 * 0.00694$
PORCH (Non-living area)	61	$-((454.6 + 454.6) * (722 - 752.5) + (454.6 + 475.5) * (752.5 - 752.3) + (475.5 + 475.5) * (752.3 - 795.1) + (475.5 + 338.9) * (795.1 - 795.1) + (338.9 + 338.9) * (795.1 - 752.7) + (338.9 + 355.4) * (752.7 - 752.7) + (355.4 + 355.4) * (752.7 - 722) + (355.4 + 454.6) * (722 - 722)) * 0.5 * 0.00694$