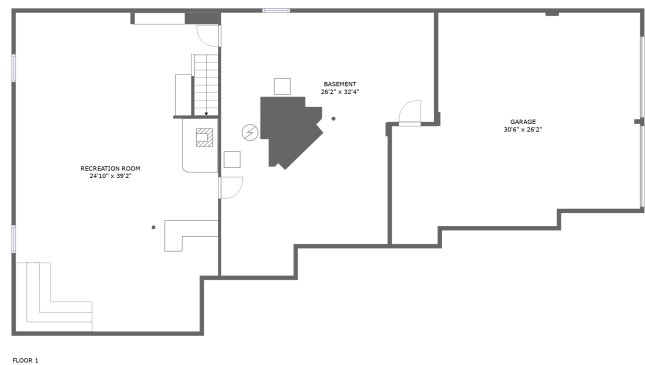
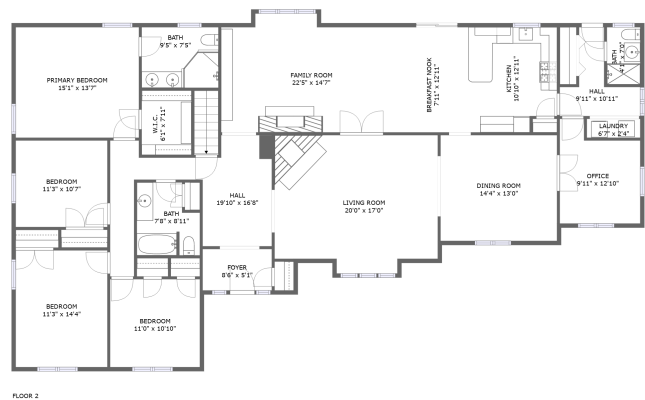


Home report

2 Putnam Court, Holmdel, Monmouth County, New Jersey,
United States, 07733



Total Area: 3442 sq. ft
Below Ground: 969 sq. ft, Floor 2: 2473 sq. ft
Excluded: Basement 693 sq. ft, Garage 711 sq. ft, Walls: 256 sq. ft

Property summary

 **2** Floors

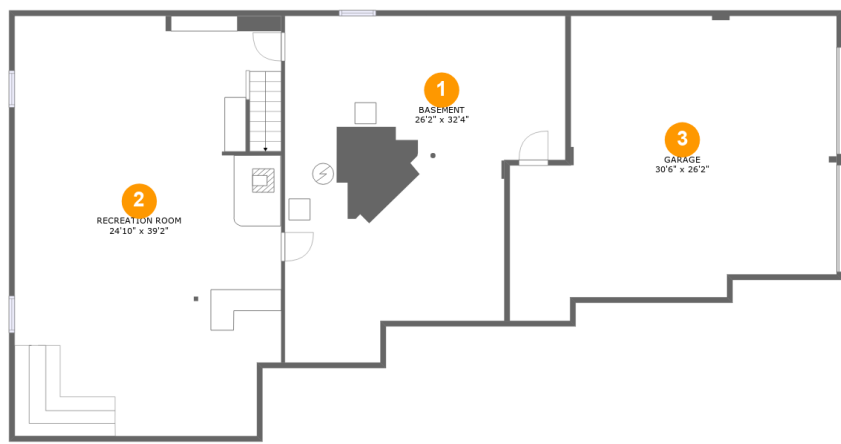
 **4** Bedrooms

 **3** Bathrooms

 **1** Garages

Home report

2 Putnam Court, Holmdel, Monmouth County, New Jersey,
United States, 07733



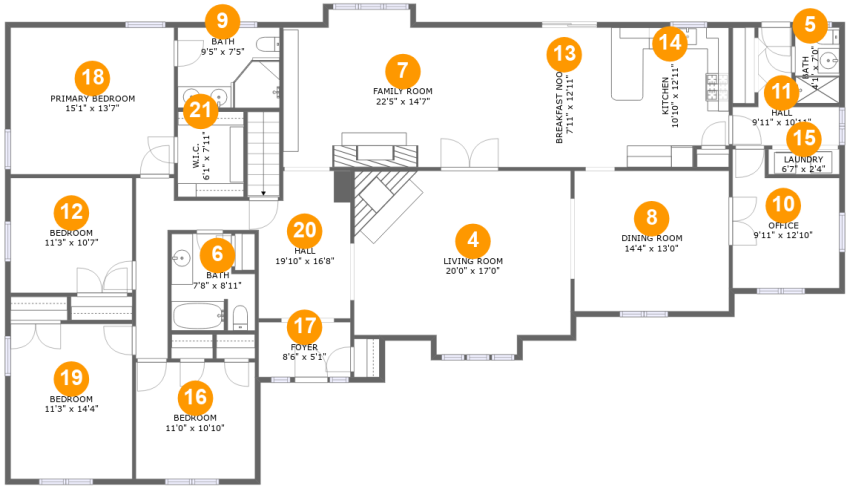
Room dimensions

Floor 1 Below ground Total:969sqft Excluded: 1404sqft

#		Max Dimensions	sqft	Included
1	Basement	26'2" x 32'4"	693 sq. ft	No
2	Recreation Room	24'10" x 39'2"	955 sq. ft	Yes
3	Garage	30'6" x 26'2"	711 sq. ft	No

Home report

2 Putnam Court, Holmdel, Monmouth County, New Jersey,
United States, 07733



Room dimensions

Floor 2 Total:2473sqft Excluded: 0sqft

#		Max Dimensions	sqft	Included
4	Living Room	20'0" x 17'0"	318 sq. ft	Yes
5	Bath	4'1" x 7'0"	29 sq. ft	Yes
6	Bath	7'8" x 8'11"	60 sq. ft	Yes
7	Family Room	22'5" x 14'7"	302 sq. ft	Yes
8	Dining Room	14'4" x 13'0"	186 sq. ft	Yes
9	Bath	9'5" x 7'5"	70 sq. ft	Yes
10	Office	9'11" x 12'10"	109 sq. ft	Yes
11	Hall	9'11" x 10'11"	58 sq. ft	Yes
12	Bedroom	11'3" x 10'7"	120 sq. ft	Yes
13	Breakfast Nook	7'11" x 12'11"	103 sq. ft	Yes
14	Kitchen	10'10" x 12'11"	134 sq. ft	Yes

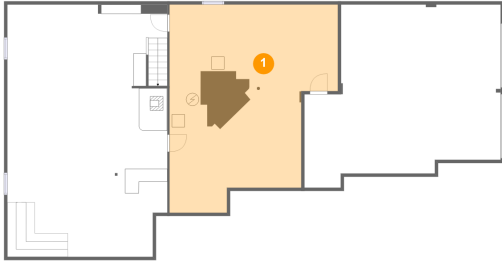
Home report

**2 Putnam Court, Holmdel, Monmouth County, New Jersey,
United States, 07733**

#		Max Dimensions	sqft	Included
15	Laundry	6'7" x 2'4"	15 sq. ft	Yes
16	Bedroom	11'0" x 10'10"	119 sq. ft	Yes
17	Foyer	8'6" x 5'1"	43 sq. ft	Yes
18	Primary Bedroom	15'1" x 13'7"	205 sq. ft	Yes
19	Bedroom	11'3" x 14'4"	161 sq. ft	Yes
20	Hall	19'10" x 16'8"	183 sq. ft	Yes
21	W.I.C.	6'1" x 7'11"	48 sq. ft	Yes

2 Putnam Court, Holmdel, Monmouth County, New Jersey,
United States, 07733

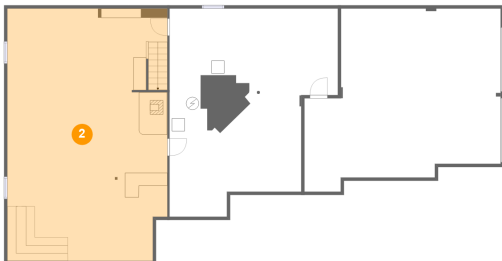
1 Floor 1 - Basement



Max Dimensions: 26'2" x 32'4"
Calculated Area: 693 sq. ft
Included: No

Heated: Yes
Finished: No
Enclosed: Yes
Contiguous: Yes
Permitted: Yes
Wet space: No
Addition: No
Conversion: No

2 Floor 1 - Recreation Room

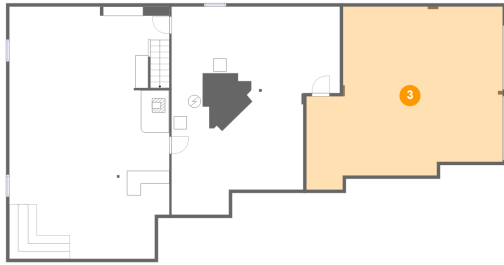


Max Dimensions: 24'10" x 39'2"
Calculated Area: 955 sq. ft
Included: Yes

Heated: Yes
Finished: Yes
Enclosed: Yes
Contiguous: Yes
Permitted: Yes
Wet space: No
Addition: No
Conversion: No

2 Putnam Court, Holmdel, Monmouth County, New Jersey,
United States, 07733

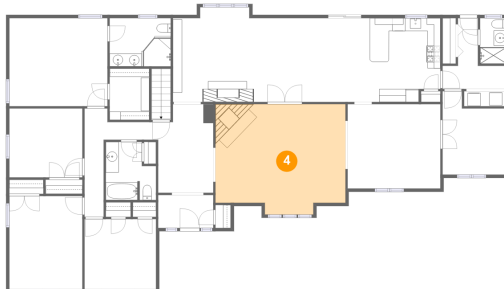
3 Floor 1 - Garage



Max Dimensions: 30'6" x 26'2"
Calculated Area: 711 sq. ft
Included: No

Heated: No
Finished: No
Enclosed: Yes
Contiguous: Yes
Permitted: Yes
Wet space: No
Addition: No
Conversion: No

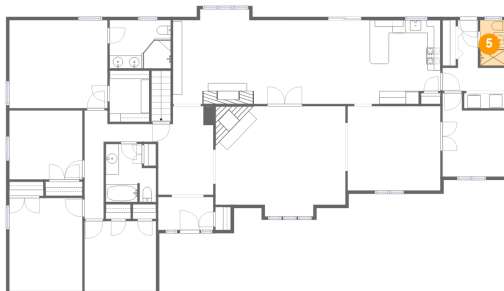
4 Floor 2 - Living Room



Max Dimensions: 20'0" x 17'0"
Calculated Area: 318 sq. ft
Included: Yes

Heated: Yes
Finished: Yes
Enclosed: Yes
Contiguous: Yes
Permitted: Yes
Wet space: No
Addition: No
Conversion: No

5 Floor 2 - Bath



Max Dimensions: 4'1" x 7'0"
Calculated Area: 29 sq. ft
Included: Yes

Heated: Yes
Finished: Yes
Enclosed: Yes
Contiguous: Yes
Permitted: Yes
Wet space: Yes
Addition: No
Conversion: No

2 Putnam Court, Holmdel, Monmouth County, New Jersey,
United States, 07733

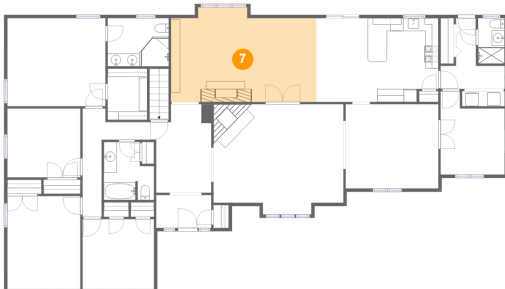
6 Floor 2 - Bath



Max Dimensions: 7'8" x 8'11"
Calculated Area: 60 sq. ft
Included: Yes

Heated: Yes
Finished: Yes
Enclosed: Yes
Contiguous: Yes
Permitted: Yes
Wet space: Yes
Addition: No
Conversion: No

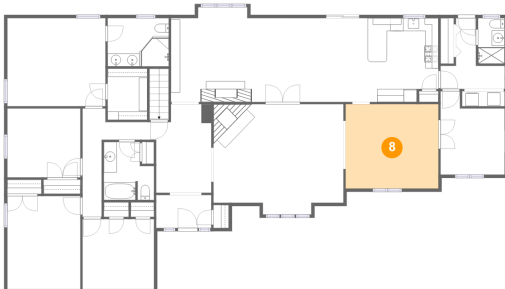
7 Floor 2 - Family Room



Max Dimensions: 22'5" x 14'7"
Calculated Area: 302 sq. ft
Included: Yes

Heated: Yes
Finished: Yes
Enclosed: Yes
Contiguous: Yes
Permitted: Yes
Wet space: No
Addition: No
Conversion: No

8 Floor 2 - Dining Room

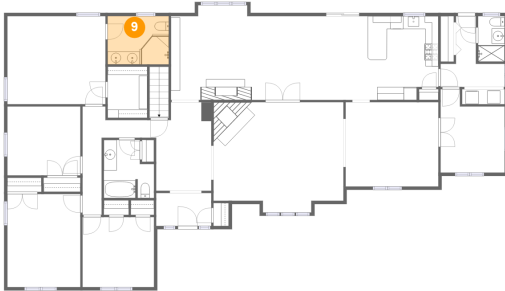


Max Dimensions: 14'4" x 13'0"
Calculated Area: 186 sq. ft
Included: Yes

Heated: Yes
Finished: Yes
Enclosed: Yes
Contiguous: Yes
Permitted: Yes
Wet space: No
Addition: No
Conversion: No

2 Putnam Court, Holmdel, Monmouth County, New Jersey,
United States, 07733

9 Floor 2 - Bath



Max Dimensions: 9'5" x 7'5"
Calculated Area: 70 sq. ft
Included: Yes

Heated: Yes
Finished: Yes
Enclosed: Yes
Contiguous: Yes
Permitted: Yes
Wet space: Yes
Addition: No
Conversion: No

10 Floor 2 - Office



Max Dimensions: 9'11" x 12'10"
Calculated Area: 109 sq. ft
Included: Yes

Heated: Yes
Finished: Yes
Enclosed: Yes
Contiguous: Yes
Permitted: Yes
Wet space: No
Addition: No
Conversion: No

11 Floor 2 - Hall



Max Dimensions: 9'11" x 10'11"
Calculated Area: 58 sq. ft
Included: Yes

Heated: Yes
Finished: Yes
Enclosed: Yes
Contiguous: Yes
Permitted: Yes
Wet space: No
Addition: No
Conversion: No

2 Putnam Court, Holmdel, Monmouth County, New Jersey,
United States, 07733

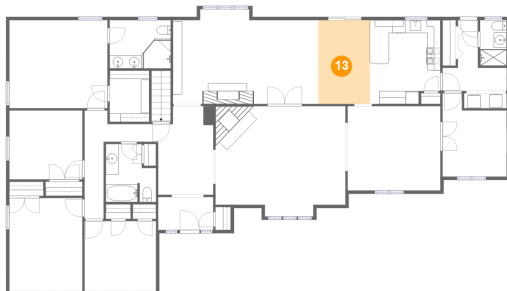
12 Floor 2 - Bedroom



Max Dimensions: 11'3" x 10'7"
Calculated Area: 120 sq. ft
Included: Yes

Heated: Yes
Finished: Yes
Enclosed: Yes
Contiguous: Yes
Permitted: Yes
Wet space: No
Addition: No
Conversion: No

13 Floor 2 - Breakfast Nook



Max Dimensions: 7'11" x 12'11"
Calculated Area: 103 sq. ft
Included: Yes

Heated: Yes
Finished: Yes
Enclosed: Yes
Contiguous: Yes
Permitted: Yes
Wet space: No
Addition: No
Conversion: No

14 Floor 2 - Kitchen



Max Dimensions: 10'10" x 12'11"
Calculated Area: 134 sq. ft
Included: Yes

Heated: Yes
Finished: Yes
Enclosed: Yes
Contiguous: Yes
Permitted: Yes
Wet space: No
Addition: No
Conversion: No

2 Putnam Court, Holmdel, Monmouth County, New Jersey,
United States, 07733

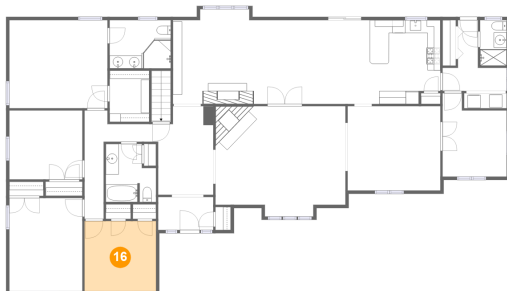
15 Floor 2 - Laundry



Max Dimensions: 6'7" x 2'4"
Calculated Area: 15 sq. ft
Included: Yes

Heated: Yes
Finished: Yes
Enclosed: Yes
Contiguous: Yes
Permitted: Yes
Wet space: No
Addition: No
Conversion: No

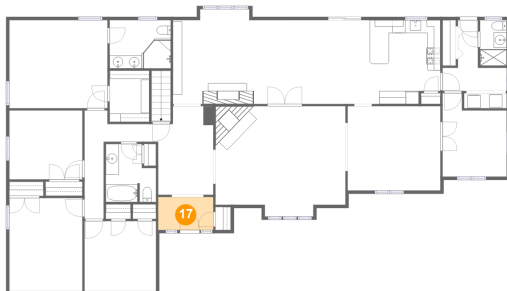
16 Floor 2 - Bedroom



Max Dimensions: 11'0" x 10'10"
Calculated Area: 119 sq. ft
Included: Yes

Heated: Yes
Finished: Yes
Enclosed: Yes
Contiguous: Yes
Permitted: Yes
Wet space: No
Addition: No
Conversion: No

17 Floor 2 - Foyer



Max Dimensions: 8'6" x 5'1"
Calculated Area: 43 sq. ft
Included: Yes

Heated: Yes
Finished: Yes
Enclosed: Yes
Contiguous: Yes
Permitted: Yes
Wet space: No
Addition: No
Conversion: No

2 Putnam Court, Holmdel, Monmouth County, New Jersey,
United States, 07733

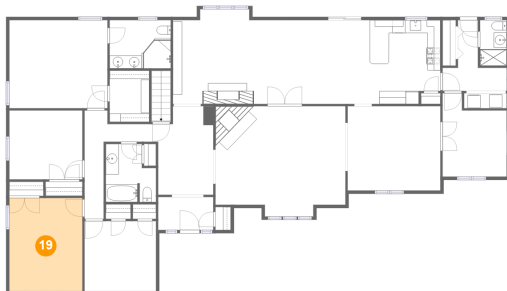
18 Floor 2 - Primary Bedroom



Max Dimensions: 15'1" x 13'7"
Calculated Area: 205 sq. ft
Included: Yes

Heated: Yes
Finished: Yes
Enclosed: Yes
Contiguous: Yes
Permitted: Yes
Wet space: No
Addition: No
Conversion: No

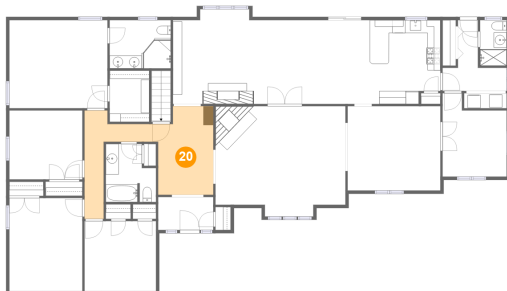
19 Floor 2 - Bedroom



Max Dimensions: 11'3" x 14'4"
Calculated Area: 161 sq. ft
Included: Yes

Heated: Yes
Finished: Yes
Enclosed: Yes
Contiguous: Yes
Permitted: Yes
Wet space: No
Addition: No
Conversion: No

20 Floor 2 - Hall



Max Dimensions: 19'10" x 16'8"
Calculated Area: 183 sq. ft
Included: Yes

Heated: Yes
Finished: Yes
Enclosed: Yes
Contiguous: Yes
Permitted: Yes
Wet space: No
Addition: No
Conversion: No

2 Putnam Court, Holmdel, Monmouth County, New Jersey,
United States, 07733

21 Floor 2 - W.I.C.



Max Dimensions: 6'1" x
7'11"
Calculated Area: 48 sq. ft
Included: Yes

Heated: Yes
Finished: Yes
Enclosed: Yes
Contiguous:
Yes
Permitted: Yes
Wet space: No
Addition: No
Conversion: No