

Home report

1703 Springfield Avenue, Salem, Salem city, Virginia, United States, 24153



Total Area: 2388 sq. ft

Floor 1: 0 sq. ft, Floor 2: 1469 sq. ft, Floor 3: 919 sq. ft

Excluded: Utility 102 sq. ft, Basement 590 sq. ft, Porch 52 sq. ft, Deck 323 sq. ft, Patio 591 sq. ft, Walls: 209 sq. ft

Property summary

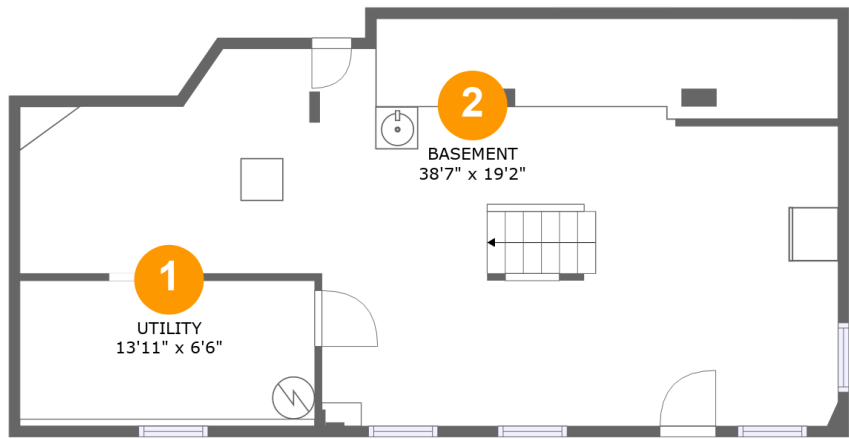
3 Floors

4 Bedrooms

2 Bathrooms

Home report

1703 Springfield Avenue, Salem, Salem city, Virginia, United States, 24153



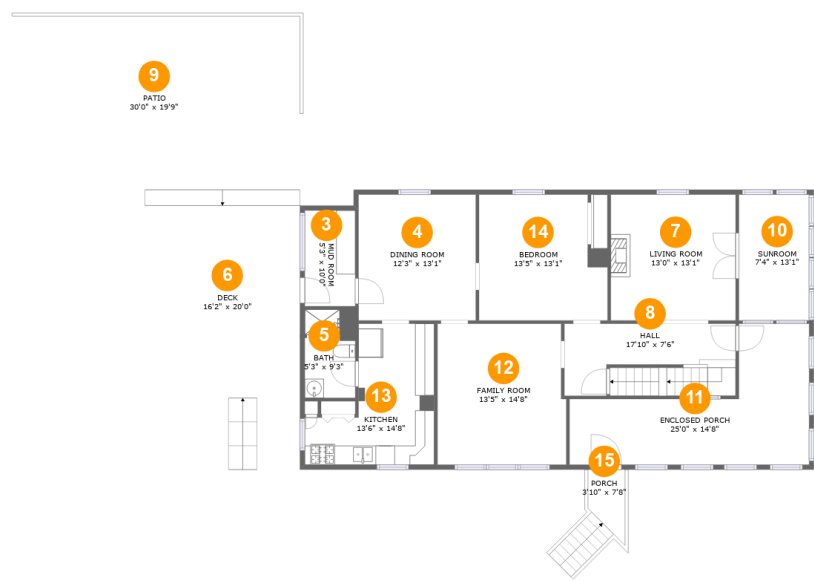
Room dimensions

Floor 1 Total:0sqft Excluded: 692sqft

#		Max Dimensions	sqft	Included
1	Utility	13'11" x 6'6"	95 sq. ft	No
2	Basement	38'7" x 19'2"	588 sq. ft	No

Home report

1703 Springfield Avenue, Salem, Salem city, Virginia, United States, 24153



Room dimensions

Floor 2

Total:1469sqft

Excluded: 966sqft

#		Max Dimensions	sqft	Included
3	Mud Room	5'3" x 10'0"	52 sq. ft	Yes
4	Dining Room	12'3" x 13'1"	160 sq. ft	Yes
5	Bath	5'3" x 9'3"	48 sq. ft	Yes
6	Deck	16'2" x 20'0"	323 sq. ft	No
7	Living Room	13'0" x 13'1"	170 sq. ft	Yes
8	Hall	17'10" x 7'6"	130 sq. ft	Yes
9	Patio	30'0" x 19'9"	591 sq. ft	No
10	Sunroom	7'4" x 13'1"	96 sq. ft	Yes
11	Enclosed Porch	25'0" x 14'8"	228 sq. ft	Yes
12	Family Room	13'5" x 14'8"	193 sq. ft	Yes
13	Kitchen	13'6" x 14'8"	144 sq. ft	Yes

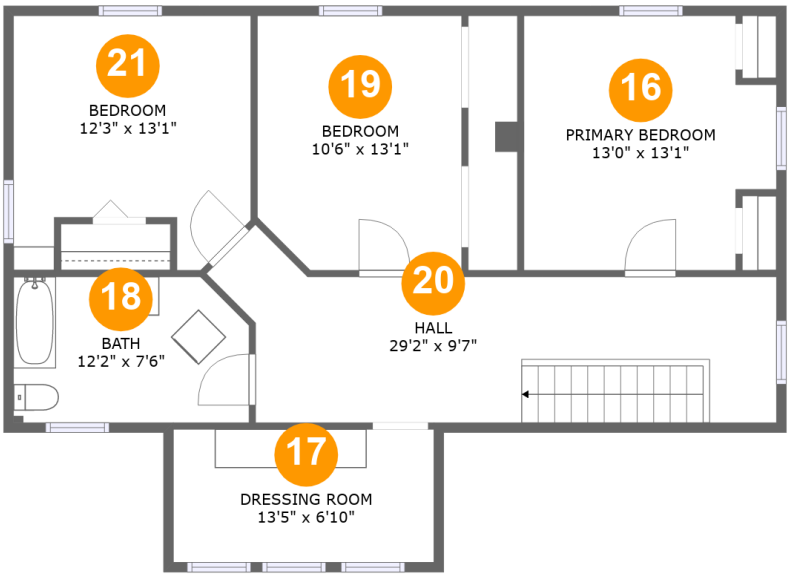
Home report

1703 Springfield Avenue, Salem, Salem city, Virginia, United States, 24153

#		Max Dimensions	sqft	Included
14	Bedroom	13'5" x 13'1"	160 sq. ft	Yes
15	Porch	3'10" x 7'8"	52 sq. ft	No

Home report

1703 Springfield Avenue, Salem, Salem city, Virginia, United States, 24153



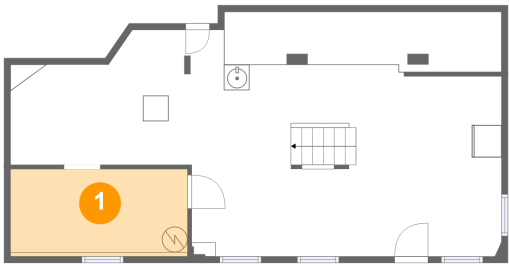
Room dimensions

Floor 3 Total:919sqft Excluded: 0sqft

#		Max Dimensions	sqft	Included
16	Primary Bedroom	13'0" x 13'1"	154 sq. ft	Yes
17	Dressing Room	13'5" x 6'10"	92 sq. ft	Yes
18	Bath	12'2" x 7'6"	88 sq. ft	Yes
19	Bedroom	10'6" x 13'1"	134 sq. ft	Yes
20	Hall	29'2" x 9'7"	211 sq. ft	Yes
21	Bedroom	12'3" x 13'1"	140 sq. ft	Yes

1703 Springfield Avenue, Salem, Salem city, Virginia, United States, 24153

1 Floor 1 - Utility



Max Dimensions: 13'11" x 6'6"
Calculated Area: 95 sq. ft
Included: No

Heated: Yes
Finished: No
Enclosed: Yes
Contiguous: Yes
Permitted: Yes
Wet space: No
Addition: No
Conversion: No

2 Floor 1 - Basement



Max Dimensions: 38'7" x 19'2"
Calculated Area: 588 sq. ft
Included: No

Heated: Yes
Finished: No
Enclosed: Yes
Contiguous: Yes
Permitted: Yes
Wet space: No
Addition: No
Conversion: No

1703 Springfield Avenue, Salem, Salem city, Virginia, United States, 24153

3 Floor 2 - Mud Room



Max Dimensions: 5'3" x 10'0"
Calculated Area: 52 sq. ft
Included: Yes

Heated: Yes
Finished: Yes
Enclosed: Yes
Contiguous: Yes
Permitted: Yes
Wet space: No
Addition: No
Conversion: No

4 Floor 2 - Dining Room



Max Dimensions: 12'3" x 13'1"
Calculated Area: 160 sq. ft
Included: Yes

Heated: Yes
Finished: Yes
Enclosed: Yes
Contiguous: Yes
Permitted: Yes
Wet space: No
Addition: No
Conversion: No

5 Floor 2 - Bath

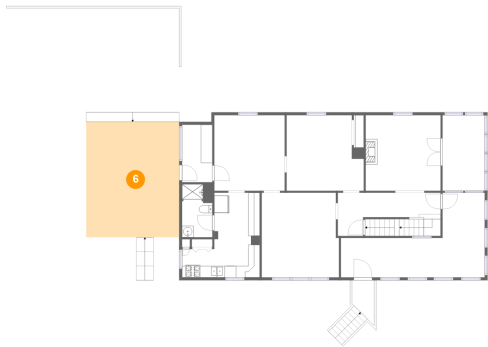


Max Dimensions: 5'3" x 9'3"
Calculated Area: 48 sq. ft
Included: Yes

Heated: Yes
Finished: Yes
Enclosed: Yes
Contiguous: Yes
Permitted: Yes
Wet space: Yes
Addition: No
Conversion: No

1703 Springfield Avenue, Salem, Salem city, Virginia, United States, 24153

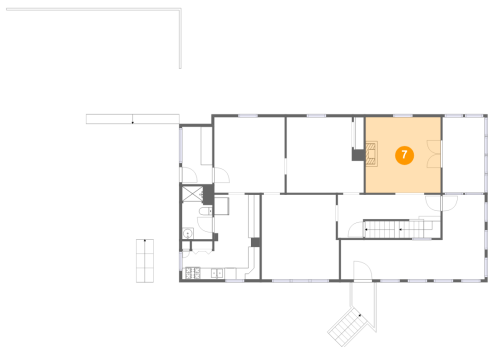
6 Floor 2 - Deck



Max Dimensions: 16'2" x 20'0"
Calculated Area: 323 sq. ft
Included: No

Heated: No
Finished: Yes
Enclosed: No
Contiguous: Yes
Permitted: Yes
Wet space: No
Addition: No
Conversion: No

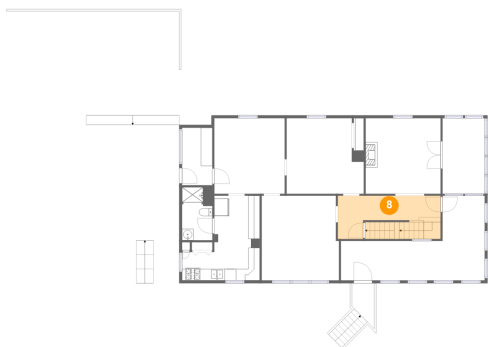
7 Floor 2 - Living Room



Max Dimensions: 13'0" x 13'1"
Calculated Area: 170 sq. ft
Included: Yes

Heated: Yes
Finished: Yes
Enclosed: Yes
Contiguous: Yes
Permitted: Yes
Wet space: No
Addition: No
Conversion: No

8 Floor 2 - Hall

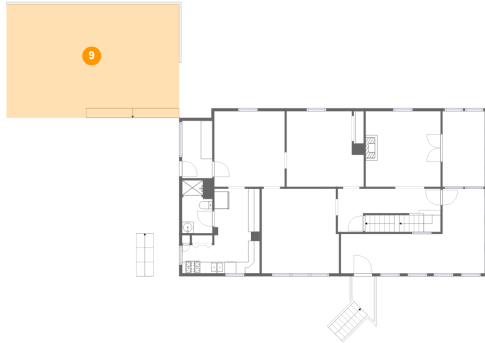


Max Dimensions: 17'10" x 7'6"
Calculated Area: 130 sq. ft
Included: Yes

Heated: Yes
Finished: Yes
Enclosed: Yes
Contiguous: Yes
Permitted: Yes
Wet space: No
Addition: No
Conversion: No

1703 Springfield Avenue, Salem, Salem city, Virginia, United States, 24153

9 Floor 2 - Patio



Max Dimensions: 30'0" x 19'9"
Calculated Area: 591 sq. ft
Included: No

Heated: No
Finished: Yes
Enclosed: No
Contiguous: Yes
Permitted: Yes
Wet space: No
Addition: No
Conversion: No

10 Floor 2 - Sunroom



Max Dimensions: 7'4" x 13'1"
Calculated Area: 96 sq. ft
Included: Yes

Heated: Yes
Finished: Yes
Enclosed: Yes
Contiguous: Yes
Permitted: Yes
Wet space: No
Addition: No
Conversion: No

11 Floor 2 - Enclosed Porch

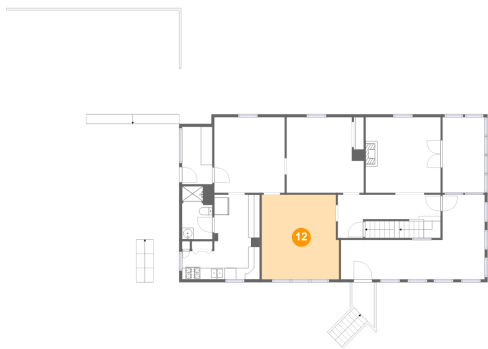


Max Dimensions: 25'0" x 14'8"
Calculated Area: 228 sq. ft
Included: Yes

Heated: Yes
Finished: Yes
Enclosed: Yes
Contiguous: Yes
Permitted: Yes
Wet space: No
Addition: No
Conversion: No

1703 Springfield Avenue, Salem, Salem city, Virginia, United States, 24153

12 Floor 2 - Family Room



Max Dimensions: 13'5" x 14'8"
Calculated Area: 193 sq. ft
Included: Yes

Heated: Yes
Finished: Yes
Enclosed: Yes
Contiguous: Yes
Permitted: Yes
Wet space: No
Addition: No
Conversion: No

13 Floor 2 - Kitchen



Max Dimensions: 13'6" x 14'8"
Calculated Area: 144 sq. ft
Included: Yes

Heated: Yes
Finished: Yes
Enclosed: Yes
Contiguous: Yes
Permitted: Yes
Wet space: No
Addition: No
Conversion: No

14 Floor 2 - Bedroom

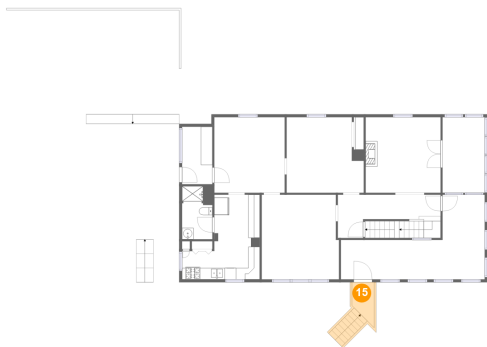


Max Dimensions: 13'5" x 13'1"
Calculated Area: 160 sq. ft
Included: Yes

Heated: Yes
Finished: Yes
Enclosed: Yes
Contiguous: Yes
Permitted: Yes
Wet space: No
Addition: No
Conversion: No

1703 Springfield Avenue, Salem, Salem city, Virginia, United States, 24153

15 Floor 2 - Porch



Max Dimensions: 3'10" x 7'8"
Calculated Area: 52 sq. ft
Included: No

Heated: No
Finished: Yes
Enclosed: No
Contiguous: Yes
Permitted: Yes
Wet space: No
Addition: No
Conversion: No

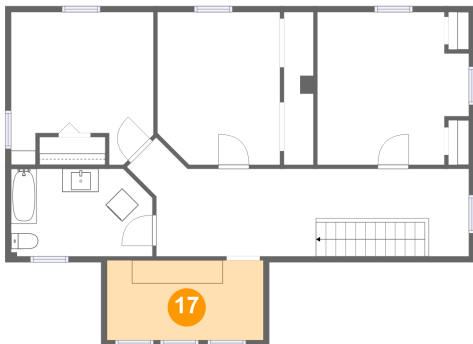
16 Floor 3 - Primary Bedroom



Max Dimensions: 13'0" x 13'1"
Calculated Area: 154 sq. ft
Included: Yes

Heated: Yes
Finished: Yes
Enclosed: Yes
Contiguous: Yes
Permitted: Yes
Wet space: No
Addition: No
Conversion: No

17 Floor 3 - Dressing Room



Max Dimensions: 13'5" x 6'10"
Calculated Area: 92 sq. ft
Included: Yes

Heated: Yes
Finished: Yes
Enclosed: Yes
Contiguous: Yes
Permitted: Yes
Wet space: No
Addition: No
Conversion: No

1703 Springfield Avenue, Salem, Salem city, Virginia, United States, 24153

18 Floor 3 - Bath



Max Dimensions: 12'2" x 7'6"
Calculated Area: 88 sq. ft
Included: Yes

Heated: Yes
Finished: Yes
Enclosed: Yes
Contiguous: Yes
Permitted: Yes
Wet space: Yes
Addition: No
Conversion: No

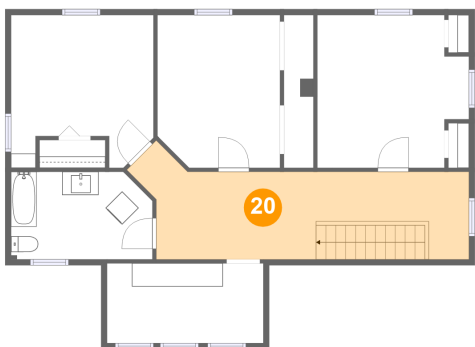
19 Floor 3 - Bedroom



Max Dimensions: 10'6" x 13'1"
Calculated Area: 134 sq. ft
Included: Yes

Heated: Yes
Finished: Yes
Enclosed: Yes
Contiguous: Yes
Permitted: Yes
Wet space: No
Addition: No
Conversion: No

20 Floor 3 - Hall

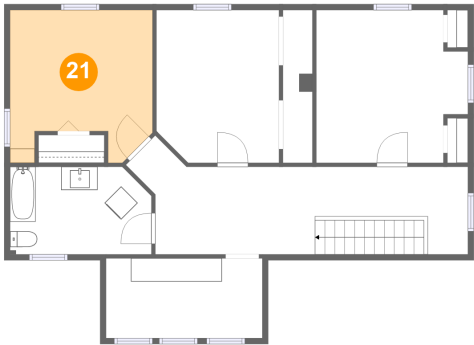


Max Dimensions: 29'2" x 9'7"
Calculated Area: 211 sq. ft
Included: Yes

Heated: Yes
Finished: Yes
Enclosed: Yes
Contiguous: Yes
Permitted: Yes
Wet space: No
Addition: No
Conversion: No

1703 Springfield Avenue, Salem, Salem city, Virginia, United States, 24153

21 Floor 3 - Bedroom



Max Dimensions: 12'3" x 13'1"
Calculated Area: 140 sq. ft
Included: Yes

Heated: Yes
Finished: Yes
Enclosed: Yes
Contiguous: Yes
Permitted: Yes
Wet space: No
Addition: No
Conversion: No