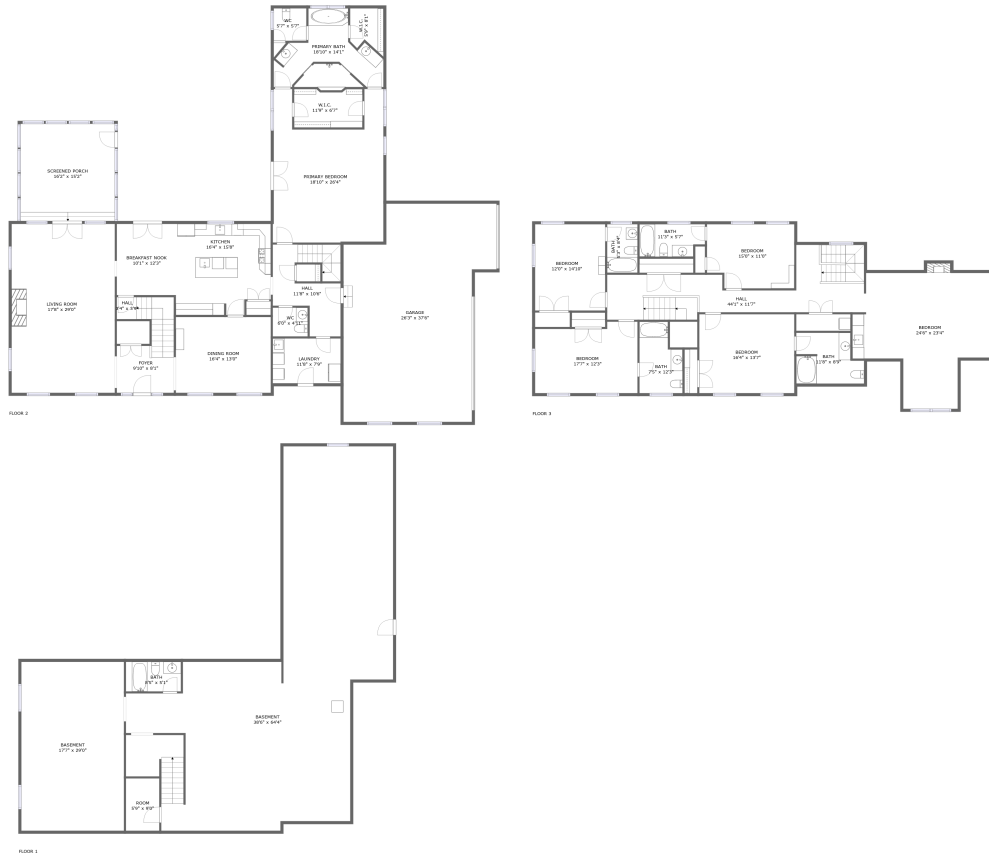


# 14239 Seneca Road, Darnestown Knolls, Darnestown, Germantown, Montgomery County, Maryland, United



## Property summary

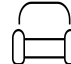
 **1** Garages

 **6** Bedrooms

 **6** Bathrooms

 **1** Half baths

 **3** Floors

 **4,572** Gross living area sqft

 **8,211** Total sqft

# 14239 Seneca Road, Darnestown Knolls, Darnestown, Germantown, Montgomery County, Maryland, United



## Room dimensions

Floor 1

Total sqft: 2469

Living area: 0

| # |          | Dimensions    | sqft        | Counted as living area |
|---|----------|---------------|-------------|------------------------|
| 1 | Basement | 17'7" x 29'0" | 511 sq. ft  | No                     |
| 2 | Room     | 5'9" x 9'0"   | 52 sq. ft   | No                     |
| 3 | Bath     | 8'5" x 5'1"   | 48 sq. ft   | No                     |
| 4 | Basement | 38'6" x 64'4" | 1637 sq. ft | No                     |

# 14239 Seneca Road, Darnestown Knolls, Darnestown, Germantown, Montgomery County, Maryland, United



## Room dimensions

Floor 2

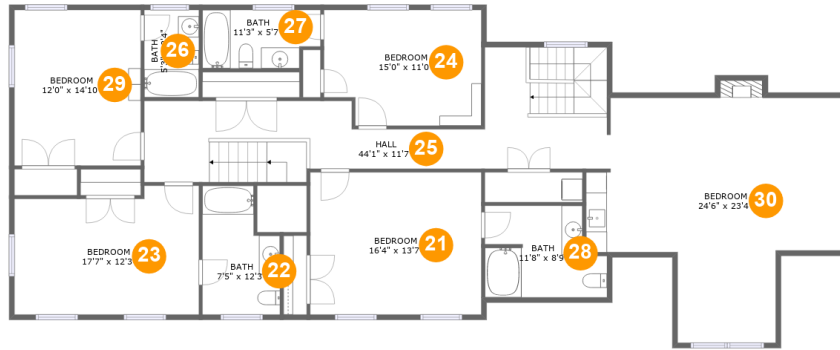
Total sqft: 3630 Living area: 2468

| #  |                | Dimensions     | sqft       | Counted as living area |
|----|----------------|----------------|------------|------------------------|
| 5  | Garage         | 26'3" x 37'6"  | 822 sq. ft | No                     |
| 6  | Hall           | 11'8" x 10'6"  | 132 sq. ft | Yes                    |
| 7  | Living Room    | 17'8" x 29'0"  | 514 sq. ft | Yes                    |
| 8  | Foyer          | 9'10" x 8'1"   | 97 sq. ft  | Yes                    |
| 9  | WC             | 6'0" x 4'11"   | 30 sq. ft  | Yes                    |
| 10 | Breakfast Nook | 10'1" x 12'3"  | 124 sq. ft | Yes                    |
| 11 | Laundry        | 11'8" x 7'9"   | 90 sq. ft  | Yes                    |
| 12 | W.I.C.         | 5'9" x 8'1"    | 37 sq. ft  | Yes                    |
| 13 | Dining Room    | 16'4" x 13'0"  | 212 sq. ft | Yes                    |
| 14 | Primary Bath   | 18'10" x 14'1" | 173 sq. ft | Yes                    |
| 15 | Kitchen        | 16'4" x 15'8"  | 242 sq. ft | Yes                    |

**14239 Seneca Road, Darnestown Knolls, Darnestown,  
Germantown, Montgomery County, Maryland, United**

| #  |                 | Dimensions     | sqft       | Counted as living area |
|----|-----------------|----------------|------------|------------------------|
| 16 | Primary Bedroom | 18'10" x 26'4" | 410 sq. ft | Yes                    |
| 17 | Screened Porch  | 16'2" x 15'2"  | 270 sq. ft | No                     |
| 18 | Hall            | 3'4" x 3'9"    | 37 sq. ft  | Yes                    |
| 19 | WC              | 5'7" x 5'7"    | 31 sq. ft  | Yes                    |
| 20 | W.I.C.          | 11'9" x 6'7"   | 75 sq. ft  | Yes                    |

# 14239 Seneca Road, Darnestown Knolls, Darnestown, Germantown, Montgomery County, Maryland, United



## Room dimensions

Floor 3

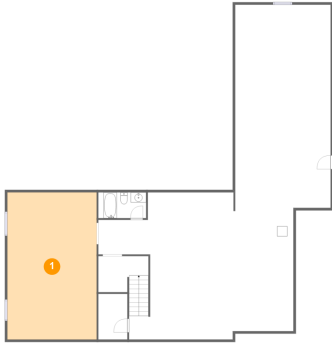
Total sqft: 2112 Living area: 2104

| #  |         | Dimensions     | sqft       | Counted as living area |
|----|---------|----------------|------------|------------------------|
| 21 | Bedroom | 16'4" x 13'7"  | 221 sq. ft | Yes                    |
| 22 | Bath    | 7'5" x 12'3"   | 79 sq. ft  | Yes                    |
| 23 | Bedroom | 17'7" x 12'3"  | 200 sq. ft | Yes                    |
| 24 | Bedroom | 15'0" x 11'0"  | 157 sq. ft | Yes                    |
| 25 | Hall    | 44'1" x 11'7"  | 330 sq. ft | Yes                    |
| 26 | Bath    | 5'3" x 8'4"    | 43 sq. ft  | Yes                    |
| 27 | Bath    | 11'3" x 5'7"   | 58 sq. ft  | Yes                    |
| 28 | Bath    | 11'8" x 8'9"   | 89 sq. ft  | Yes                    |
| 29 | Bedroom | 12'0" x 14'10" | 178 sq. ft | Yes                    |
| 30 | Bedroom | 24'6" x 23'4"  | 432 sq. ft | Yes                    |

# 14239 Seneca Road, Darnestown Knolls, Darnestown, Germantown, Montgomery County, Maryland, United

## 1 Floor 1 - Basement

---

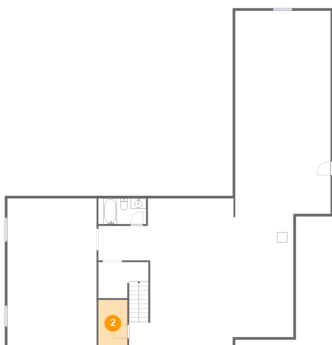


**Dimensions:** 17'7" x 29'0"  
**Area:** 511 sq. ft  
**Counted as living area:** No

**Heated:** Yes  
**Finished:** No  
**Enclosed:** Yes  
**Contiguous:** Yes  
**Permitted:** Yes  
**Wet space:** No  
**Addition:** No  
**Conversion:** No

## 2 Floor 1 - Room

---

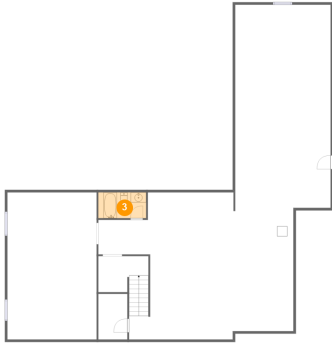


**Dimensions:** 5'9" x 9'0"  
**Area:** 52 sq. ft  
**Counted as living area:** No

**Heated:** Yes  
**Finished:** Yes  
**Enclosed:** Yes  
**Contiguous:** No  
**Permitted:** Yes  
**Wet space:** No  
**Addition:** No  
**Conversion:** No

# 14239 Seneca Road, Darnestown Knolls, Darnestown, Germantown, Montgomery County, Maryland, United

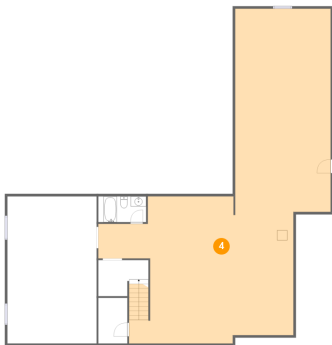
## 3 Floor 1 - Bath



Dimensions: 8'5" x 5'1"  
Area: 48 sq. ft  
Counted as living area: No

Heated: Yes  
Finished: Yes  
Enclosed: Yes  
Contiguous: No  
Permitted: Yes  
Wet space: Yes  
Addition: No  
Conversion: No

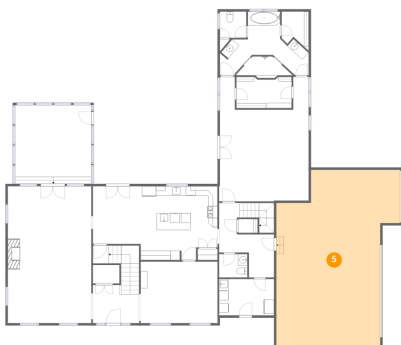
## 4 Floor 1 - Basement



Dimensions: 38'6" x 64'4"  
Area: 1637 sq. ft  
Counted as living area: No

Heated: Yes  
Finished: No  
Enclosed: Yes  
Contiguous: Yes  
Permitted: Yes  
Wet space: No  
Addition: No  
Conversion: No

## 5 Floor 2 - Garage



Dimensions: 26'3" x 37'6"  
Area: 822 sq. ft  
Counted as living area: No

Heated: No  
Finished: No  
Enclosed: Yes  
Contiguous: Yes  
Permitted: Yes  
Wet space: No  
Addition: No  
Conversion: No

# 14239 Seneca Road, Darnestown Knolls, Darnestown, Germantown, Montgomery County, Maryland, United

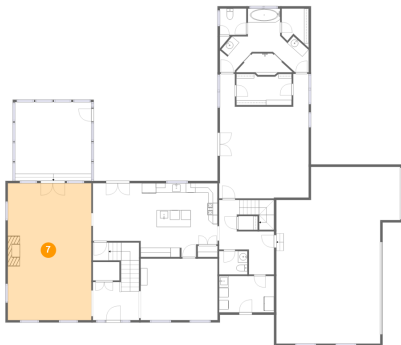
## 6 Floor 2 - Hall



Dimensions: 11'8" x 10'6"  
Area: 132 sq. ft  
Counted as living area: Yes

Heated: Yes  
Finished: Yes  
Enclosed: Yes  
Contiguous: Yes  
Permitted: Yes  
Wet space: No  
Addition: No  
Conversion: No

## 7 Floor 2 - Living Room



Dimensions: 17'8" x 29'0"  
Area: 514 sq. ft  
Counted as living area: Yes

Heated: Yes  
Finished: Yes  
Enclosed: Yes  
Contiguous: Yes  
Permitted: Yes  
Wet space: No  
Addition: No  
Conversion: No

## 8 Floor 2 - Foyer



Dimensions: 9'10" x 8'1"  
Area: 97 sq. ft  
Counted as living area: Yes

Heated: Yes  
Finished: Yes  
Enclosed: Yes  
Contiguous: Yes  
Permitted: Yes  
Wet space: No  
Addition: No  
Conversion: No



# 14239 Seneca Road, Darnestown Knolls, Darnestown, Germantown, Montgomery County, Maryland, United

## 9 Floor 2 - WC



Dimensions: 6'0" x 4'11"  
Area: 30 sq. ft  
Counted as living area: Yes

Heated: Yes  
Finished: Yes  
Enclosed: Yes  
Contiguous: Yes  
Permitted: Yes  
Wet space: Yes  
Addition: No  
Conversion: No

## 10 Floor 2 - Breakfast Nook



Dimensions: 10'1" x 12'3"  
Area: 124 sq. ft  
Counted as living area: Yes

Heated: Yes  
Finished: Yes  
Enclosed: Yes  
Contiguous: Yes  
Permitted: Yes  
Wet space: No  
Addition: No  
Conversion: No

## 11 Floor 2 - Laundry



Dimensions: 11'8" x 7'9"  
Area: 90 sq. ft  
Counted as living area: Yes

Heated: Yes  
Finished: Yes  
Enclosed: Yes  
Contiguous: Yes  
Permitted: Yes  
Wet space: No  
Addition: No  
Conversion: No

# 14239 Seneca Road, Darnestown Knolls, Darnestown, Germantown, Montgomery County, Maryland, United

## 12 Floor 2 - W.I.C.



Dimensions: 5'9" x 8'1"  
Area: 37 sq. ft  
Counted as living area: Yes

Heated: Yes  
Finished: Yes  
Enclosed: Yes  
Contiguous: Yes  
Permitted: Yes  
Wet space: No  
Addition: No  
Conversion: No

## 13 Floor 2 - Dining Room



Dimensions: 16'4" x 13'0"  
Area: 212 sq. ft  
Counted as living area: Yes

Heated: Yes  
Finished: Yes  
Enclosed: Yes  
Contiguous: Yes  
Permitted: Yes  
Wet space: No  
Addition: No  
Conversion: No

## 14 Floor 2 - Primary Bath

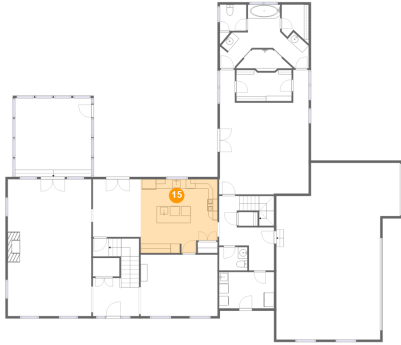


Dimensions: 18'10" x 14'1"  
Area: 173 sq. ft  
Counted as living area: Yes

Heated: Yes  
Finished: Yes  
Enclosed: Yes  
Contiguous: Yes  
Permitted: Yes  
Wet space: Yes  
Addition: No  
Conversion: No

# 14239 Seneca Road, Darnestown Knolls, Darnestown, Germantown, Montgomery County, Maryland, United

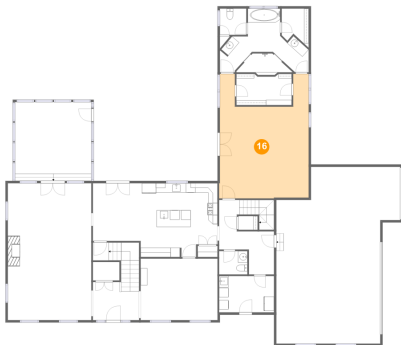
## 15 Floor 2 - Kitchen



Dimensions: 16'4" x 15'8"  
Area: 242 sq. ft  
Counted as living area: Yes

Heated: Yes  
Finished: Yes  
Enclosed: Yes  
Contiguous: Yes  
Permitted: Yes  
Wet space: No  
Addition: No  
Conversion: No

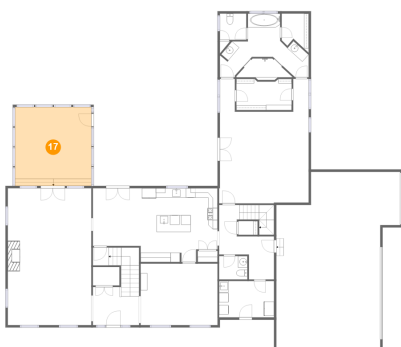
## 16 Floor 2 - Primary Bedroom



Dimensions: 18'10" x 26'4"  
Area: 410 sq. ft  
Counted as living area: Yes

Heated: Yes  
Finished: Yes  
Enclosed: Yes  
Contiguous: Yes  
Permitted: Yes  
Wet space: No  
Addition: No  
Conversion: No

## 17 Floor 2 - Screened Porch



Dimensions: 16'2" x 15'2"  
Area: 270 sq. ft  
Counted as living area: No

Heated: No  
Finished: Yes  
Enclosed: No  
Contiguous: Yes  
Permitted: Yes  
Wet space: No  
Addition: No  
Conversion: No

# 14239 Seneca Road, Darnestown Knolls, Darnestown, Germantown, Montgomery County, Maryland, United

## 18 Floor 2 - Hall



Dimensions: 3'4" x 3'9"  
Area: 37 sq. ft  
Counted as living area: Yes

Heated: Yes  
Finished: Yes  
Enclosed: Yes  
Contiguous: Yes  
Permitted: Yes  
Wet space: No  
Addition: No  
Conversion: No

## 19 Floor 2 - WC



Dimensions: 5'7" x 5'7"  
Area: 31 sq. ft  
Counted as living area: Yes

Heated: Yes  
Finished: Yes  
Enclosed: Yes  
Contiguous: Yes  
Permitted: Yes  
Wet space: Yes  
Addition: No  
Conversion: No

## 20 Floor 2 - W.I.C.



Dimensions: 11'9" x 6'7"  
Area: 75 sq. ft  
Counted as living area: Yes

Heated: Yes  
Finished: Yes  
Enclosed: Yes  
Contiguous: Yes  
Permitted: Yes  
Wet space: No  
Addition: No  
Conversion: No

# 14239 Seneca Road, Darnestown Knolls, Darnestown, Germantown, Montgomery County, Maryland, United

## 21 Floor 3 - Bedroom



Dimensions: 16'4" x 13'7"  
Area: 221 sq. ft  
Counted as living area: Yes

Heated: Yes  
Finished: Yes  
Enclosed: Yes  
Contiguous: Yes  
Permitted: Yes  
Wet space: No  
Addition: No  
Conversion: No

## 22 Floor 3 - Bath



Dimensions: 7'5" x 12'3"  
Area: 79 sq. ft  
Counted as living area: Yes

Heated: Yes  
Finished: Yes  
Enclosed: Yes  
Contiguous: Yes  
Permitted: Yes  
Wet space: Yes  
Addition: No  
Conversion: No

## 23 Floor 3 - Bedroom



Dimensions: 17'7" x 12'3"  
Area: 200 sq. ft  
Counted as living area: Yes

Heated: Yes  
Finished: Yes  
Enclosed: Yes  
Contiguous: Yes  
Permitted: Yes  
Wet space: No  
Addition: No  
Conversion: No

# 14239 Seneca Road, Darnestown Knolls, Darnestown, Germantown, Montgomery County, Maryland, United

## 24 Floor 3 - Bedroom



Dimensions: 15'0" x 11'0"  
Area: 157 sq. ft  
Counted as living area: Yes

Heated: Yes  
Finished: Yes  
Enclosed: Yes  
Contiguous: Yes  
Permitted: Yes  
Wet space: No  
Addition: No  
Conversion: No

## 25 Floor 3 - Hall



Dimensions: 44'1" x 11'7"  
Area: 330 sq. ft  
Counted as living area: Yes

Heated: Yes  
Finished: Yes  
Enclosed: Yes  
Contiguous: Yes  
Permitted: Yes  
Wet space: No  
Addition: No  
Conversion: No

## 26 Floor 3 - Bath



Dimensions: 5'3" x 8'4"  
Area: 43 sq. ft  
Counted as living area: Yes

Heated: Yes  
Finished: Yes  
Enclosed: Yes  
Contiguous: Yes  
Permitted: Yes  
Wet space: Yes  
Addition: No  
Conversion: No

# 14239 Seneca Road, Darnestown Knolls, Darnestown, Germantown, Montgomery County, Maryland, United

## 27 Floor 3 - Bath



Dimensions: 11'3" x 5'7"  
Area: 58 sq. ft  
Counted as living area: Yes

Heated: Yes  
Finished: Yes  
Enclosed: Yes  
Contiguous: Yes  
Permitted: Yes  
Wet space: Yes  
Addition: No  
Conversion: No

## 28 Floor 3 - Bath



Dimensions: 11'8" x 8'9"  
Area: 89 sq. ft  
Counted as living area: Yes

Heated: Yes  
Finished: Yes  
Enclosed: Yes  
Contiguous: Yes  
Permitted: Yes  
Wet space: Yes  
Addition: No  
Conversion: No

## 29 Floor 3 - Bedroom



Dimensions: 12'0" x 14'10"  
Area: 178 sq. ft  
Counted as living area: Yes

Heated: Yes  
Finished: Yes  
Enclosed: Yes  
Contiguous: Yes  
Permitted: Yes  
Wet space: No  
Addition: No  
Conversion: No

# 14239 Seneca Road, Darnestown Knolls, Darnestown, Germantown, Montgomery County, Maryland, United

## 30 Floor 3 - Bedroom



Dimensions: 24'6" x 23'4"  
Area: 432 sq. ft  
Counted as living area: Yes

Heated: Yes  
Finished: Yes  
Enclosed: Yes  
Contiguous: Yes  
Permitted: Yes  
Wet space: No  
Addition: No  
Conversion: No