



**1081 North Euclid Avenue, Park East, Sarasota,  
Sarasota County, Florida, United States, 34237**

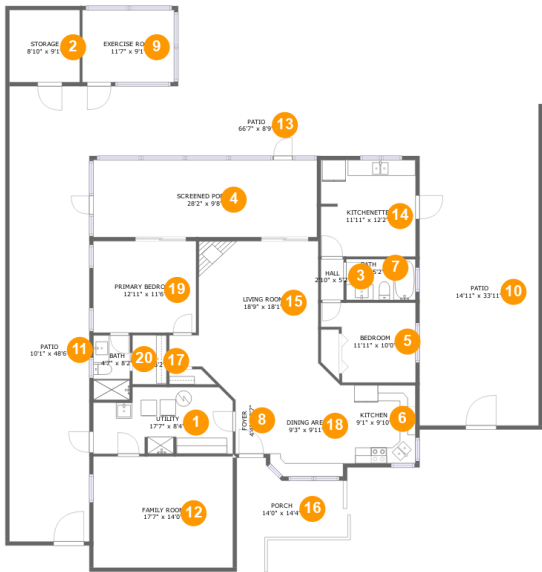


**Property Summary**

 **0** garages     **2** bedrooms     **2** bathrooms     **0** half baths

 **1** floors     **1,588** Gross Living Area sqft     **3,747** total sqft

1081 North Euclid Avenue, Park East, Sarasota,  
Sarasota County, Florida, United States, 34237



Room Dimensions

Floor 1 Total sqft: 3747 Living area: 1588

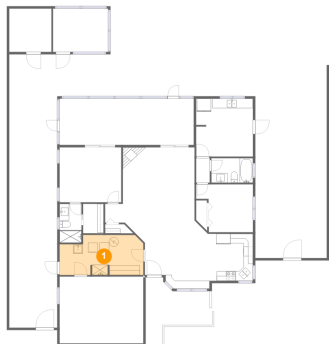
#	Room name	Dimensions	Area (sqft)	Counted as Living Area
1	Utility	17'7" x 8'4"	135 sq. ft	Yes
2	Storage	8'10" x 9'1"	80 sq. ft	No
3	Hall	2'10" x 5'2"	15 sq. ft	Yes
4	Screened Porch	28'2" x 9'8"	273 sq. ft	No
5	Bedroom	11'11" x 10'0"	101 sq. ft	Yes
6	Kitchen	9'1" x 9'10"	90 sq. ft	Yes
7	Bath	8'9" x 5'2"	45 sq. ft	Yes
8	Foyer	4'4" x 8'7"	39 sq. ft	Yes
9	Exercise Room	11'7" x 9'1"	105 sq. ft	No
10	Patio	14'11" x 33'11"	508 sq. ft	No
11	Patio	10'1" x 48'6"	488 sq. ft	Yes

**1081 North Euclid Avenue, Park East, Sarasota,  
Sarasota County, Florida, United States, 34237**

#	Room name	Dimensions	Area (sqft)	Counted as Living Area
12	Family Room	17'7" x 14'0"	246 sq. ft	Yes
13	Patio	66'7" x 8'9"	528 sq. ft	Yes
14	Kitchenette	11'11" x 12'2"	144 sq. ft	Yes
15	Living Room	18'9" x 18'1"	287 sq. ft	Yes
16	Porch	14'0" x 14'4"	125 sq. ft	No
17	W.i.c.	4'4" x 6'2"	26 sq. ft	Yes
18	Dining Area	9'3" x 9'11"	105 sq. ft	Yes
19	Primary Bedroom	12'11" x 11'6"	149 sq. ft	Yes
20	Bath	4'7" x 8'2"	37 sq. ft	Yes

**1081 North Euclid Avenue, Park East, Sarasota,  
Sarasota County, Florida, United States, 34237**

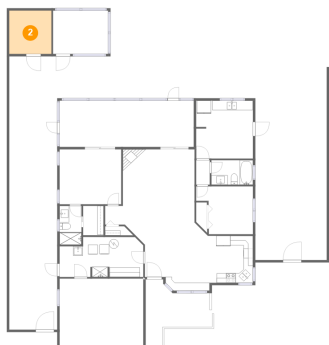
**1 Floor 1 - Utility**



Dimensions: 17'7" x 8'4"  
Area: 135 sq. ft  
Counted as Living Area:  
Yes

Heated: Yes  
Finished: Yes  
Enclosed: Yes  
Contiguous:  
Yes  
Permitted: Yes  
Wet Space: No  
Addition: No  
Conversion: No

**2 Floor 1 - Storage**



Dimensions: 8'10" x 9'1"  
Area: 80 sq. ft  
Counted as Living Area: No

Heated: No  
Finished: No  
Enclosed: No  
Contiguous: Yes  
Permitted: Yes  
Wet Space: No  
Addition: No  
Conversion: No

**1081 North Euclid Avenue, Park East, Sarasota,  
Sarasota County, Florida, United States, 34237**

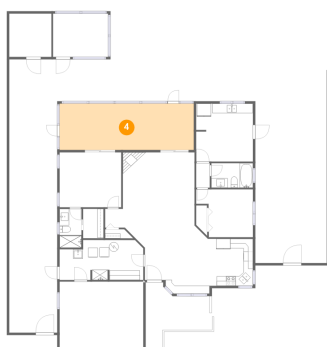
### 3 Floor 1 - Hall



Dimensions: 2'10" x 5'2"  
Area: 15 sq. ft  
Counted as Living Area:  
Yes

Heated: Yes  
Finished: Yes  
Enclosed: Yes  
Contiguous:  
Yes  
Permitted: Yes  
Wet Space: No  
Addition: No  
Conversion: No

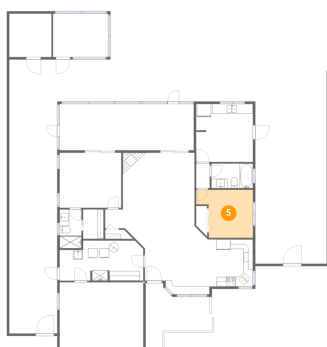
### 4 Floor 1 - Screened Porch



Dimensions: 28'2" x 9'8"  
Area: 273 sq. ft  
Counted as Living Area: No

Heated: No  
Finished: Yes  
Enclosed: No  
Contiguous: Yes  
Permitted: Yes  
Wet Space: No  
Addition: No  
Conversion: No

### 5 Floor 1 - Bedroom



Dimensions: 11'11" x 10'0"  
Area: 101 sq. ft  
Counted as Living Area:  
Yes

Heated: Yes  
Finished: Yes  
Enclosed: Yes  
Contiguous:  
Yes  
Permitted: Yes  
Wet Space: No  
Addition: No  
Conversion: No

**1081 North Euclid Avenue, Park East, Sarasota,  
Sarasota County, Florida, United States, 34237**

## **6 Floor 1 - Kitchen**



Dimensions: 9'1" x 9'10"  
Area: 90 sq. ft  
Counted as Living Area:  
Yes

Heated: Yes  
Finished: Yes  
Enclosed: Yes  
Contiguous:  
Yes  
Permitted: Yes  
Wet Space: No  
Addition: No  
Conversion: No

## **7 Floor 1 - Bath**



Dimensions: 8'9" x 5'2"  
Area: 45 sq. ft  
Counted as Living Area:  
Yes

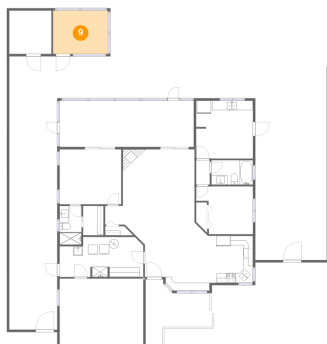
Heated: Yes  
Finished: Yes  
Enclosed: Yes  
Contiguous:  
Yes  
Permitted: Yes  
Wet Space: Yes  
Addition: No  
Conversion: No

## **8 Floor 1 - Foyer**



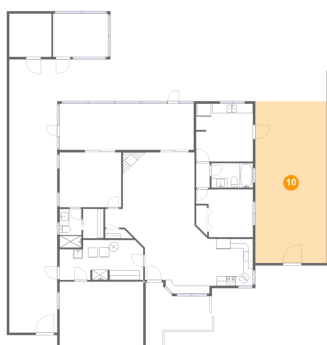
Dimensions: 4'4" x 8'7"  
Area: 39 sq. ft  
Counted as Living Area:  
Yes

Heated: Yes  
Finished: Yes  
Enclosed: Yes  
Contiguous:  
Yes  
Permitted: Yes  
Wet Space: No  
Addition: No  
Conversion: No

**1081 North Euclid Avenue, Park East, Sarasota,  
Sarasota County, Florida, United States, 34237****9 Floor 1 - Exercise Room**

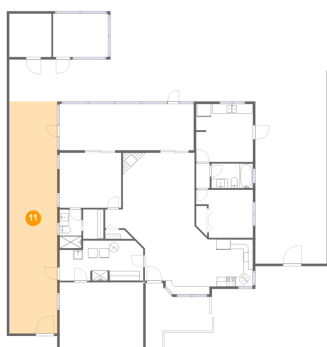
Dimensions: 11'7" x 9'1"  
Area: 105 sq. ft  
Counted as Living Area: No

Heated: Yes  
Finished: No  
Enclosed: Yes  
Contiguous: Yes  
Permitted: Yes  
Wet Space: No  
Addition: No  
Conversion: No

**10 Floor 1 - Patio**

Dimensions: 14'11" x 33'11"  
Area: 508 sq. ft  
Counted as Living Area: No

Heated: No  
Finished: Yes  
Enclosed: No  
Contiguous: Yes  
Permitted: Yes  
Wet Space: No  
Addition: No  
Conversion: No

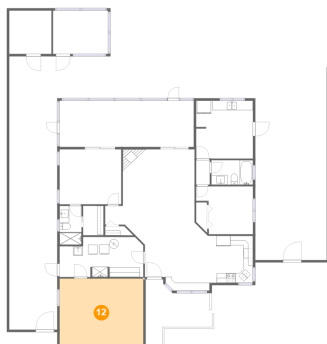
**11 Floor 1 - Patio**

Dimensions: 10'1" x 48'6"  
Area: 488 sq. ft  
Counted as Living Area:  
Yes

Heated: No  
Finished: Yes  
Enclosed: No  
Contiguous:  
Yes  
Permitted: Yes  
Wet Space: No  
Addition: No  
Conversion: No

**1081 North Euclid Avenue, Park East, Sarasota,  
Sarasota County, Florida, United States, 34237**

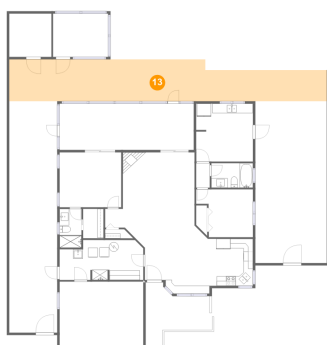
## **12 Floor 1 - Family Room**



Dimensions: 17'7" x 14'0"  
Area: 246 sq. ft  
Counted as Living Area:  
Yes

Heated: Yes  
Finished: Yes  
Enclosed: Yes  
Contiguous:  
Yes  
Permitted: Yes  
Wet Space: No  
Addition: No  
Conversion: No

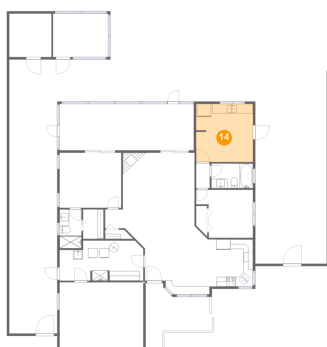
## **13 Floor 1 - Patio**



Dimensions: 66'7" x 8'9"  
Area: 528 sq. ft  
Counted as Living Area:  
Yes

Heated: No  
Finished: Yes  
Enclosed: No  
Contiguous:  
Yes  
Permitted: Yes  
Wet Space: No  
Addition: No  
Conversion: No

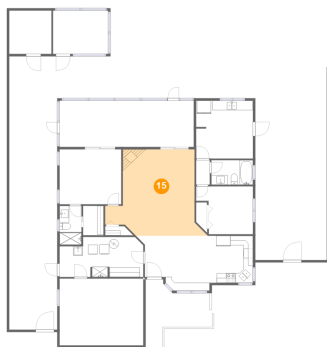
## **14 Floor 1 - Kitchenette**



Dimensions: 11'11" x 12'2"  
Area: 144 sq. ft  
Counted as Living Area:  
Yes

Heated: Yes  
Finished: Yes  
Enclosed: Yes  
Contiguous:  
Yes  
Permitted: Yes  
Wet Space: No  
Addition: No  
Conversion: No



**1081 North Euclid Avenue, Park East, Sarasota,  
Sarasota County, Florida, United States, 34237****15 Floor 1 - Living Room**

Dimensions: 18'9" x 18'1"  
Area: 287 sq. ft  
Counted as Living Area:  
Yes

Heated: Yes  
Finished: Yes  
Enclosed: Yes  
Contiguous:  
Yes  
Permitted: Yes  
Wet Space: No  
Addition: No  
Conversion: No

**16 Floor 1 - Porch**

Dimensions: 14'0" x 14'4"  
Area: 125 sq. ft  
Counted as Living Area: No

Heated: No  
Finished: Yes  
Enclosed: No  
Contiguous: Yes  
Permitted: Yes  
Wet Space: No  
Addition: No  
Conversion: No

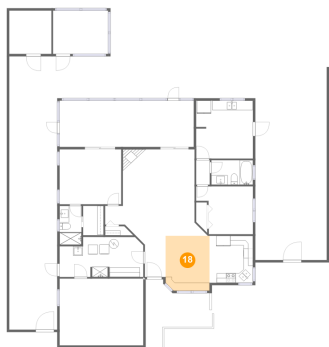
**17 Floor 1 - W.i.c.**

Dimensions: 4'4" x 6'2"  
Area: 26 sq. ft  
Counted as Living Area:  
Yes

Heated: Yes  
Finished: Yes  
Enclosed: Yes  
Contiguous:  
Yes  
Permitted: Yes  
Wet Space: No  
Addition: No  
Conversion: No

**1081 North Euclid Avenue, Park East, Sarasota,  
Sarasota County, Florida, United States, 34237**

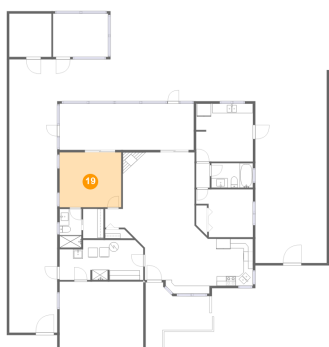
### 18 Floor 1 - Dining Area



Dimensions: 9'3" x 9'11"  
Area: 105 sq. ft  
Counted as Living Area:  
Yes

Heated: Yes  
Finished: Yes  
Enclosed: Yes  
Contiguous:  
Yes  
Permitted: Yes  
Wet Space: No  
Addition: No  
Conversion: No

### 19 Floor 1 - Primary Bedroom



Dimensions: 12'11" x 11'6"  
Area: 149 sq. ft  
Counted as Living Area:  
Yes

Heated: Yes  
Finished: Yes  
Enclosed: Yes  
Contiguous:  
Yes  
Permitted: Yes  
Wet Space: No  
Addition: No  
Conversion: No

### 20 Floor 1 - Bath



Dimensions: 4'7" x 8'2"  
Area: 37 sq. ft  
Counted as Living Area:  
Yes

Heated: Yes  
Finished: Yes  
Enclosed: Yes  
Contiguous:  
Yes  
Permitted: Yes  
Wet Space: Yes  
Addition: No  
Conversion: No