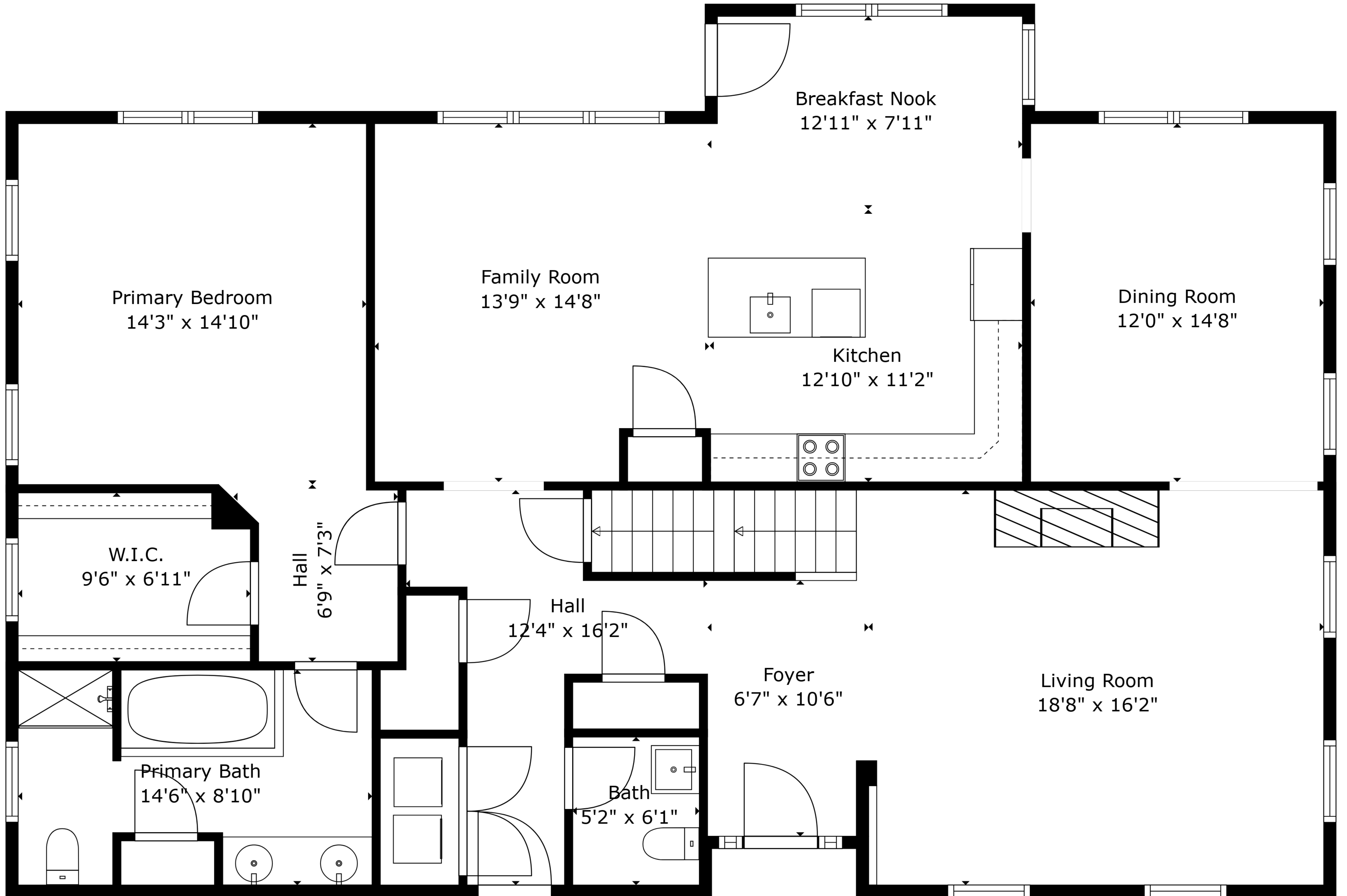


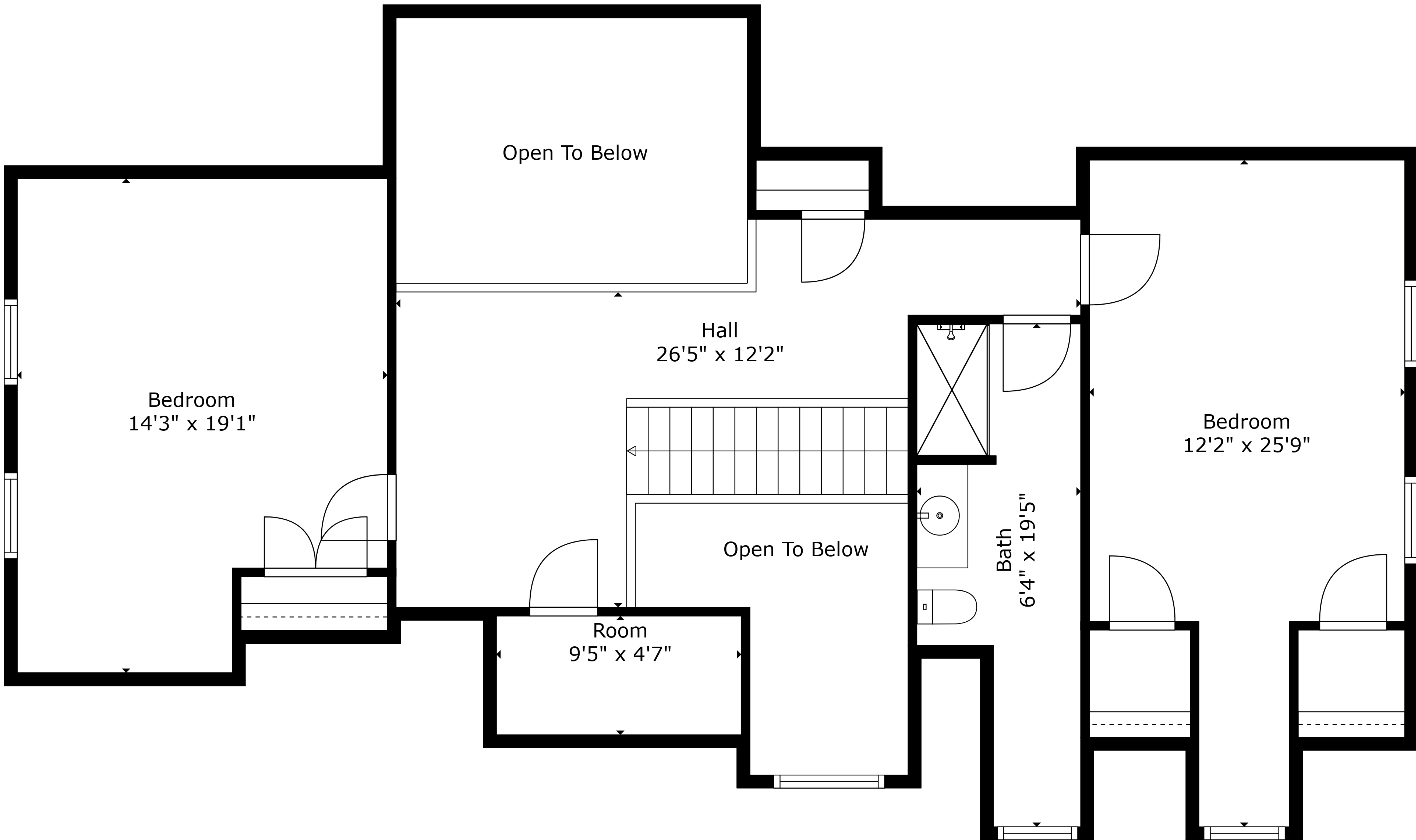
Basement
52'8" x 34'11"

TOTAL: 2651 sq. ft
BELOW GROUND: 0 sq. ft, FLOOR 2: 1711 sq. ft, FLOOR 3: 940 sq. ft
EXCLUDED AREAS: BASEMENT: 1650 sq. ft, OPEN TO BELOW: 221 sq. ft, LOW CEILING: 29 sq. ft
WALLS: 282 sq. ft

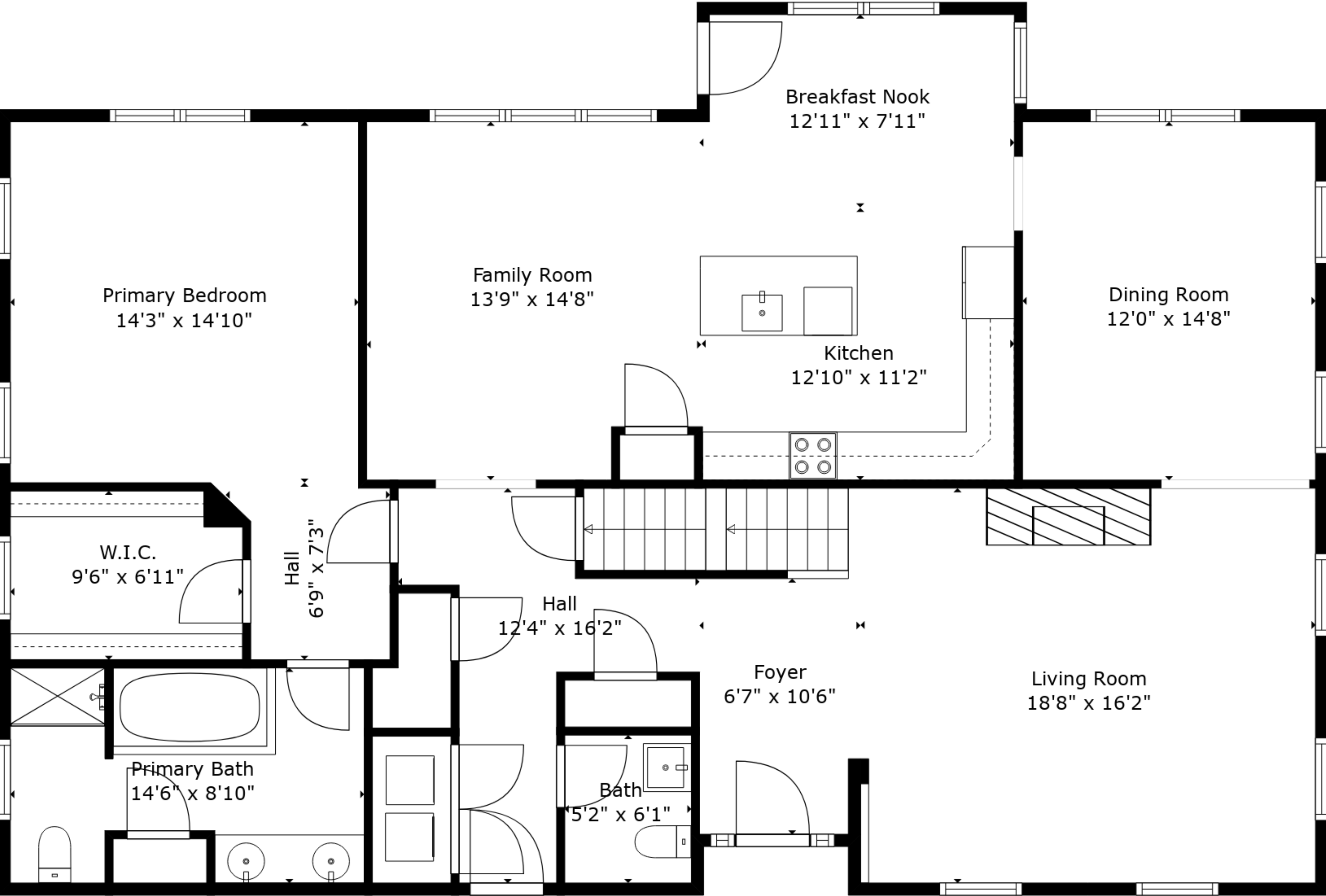


TOTAL: 2651 sq. ft

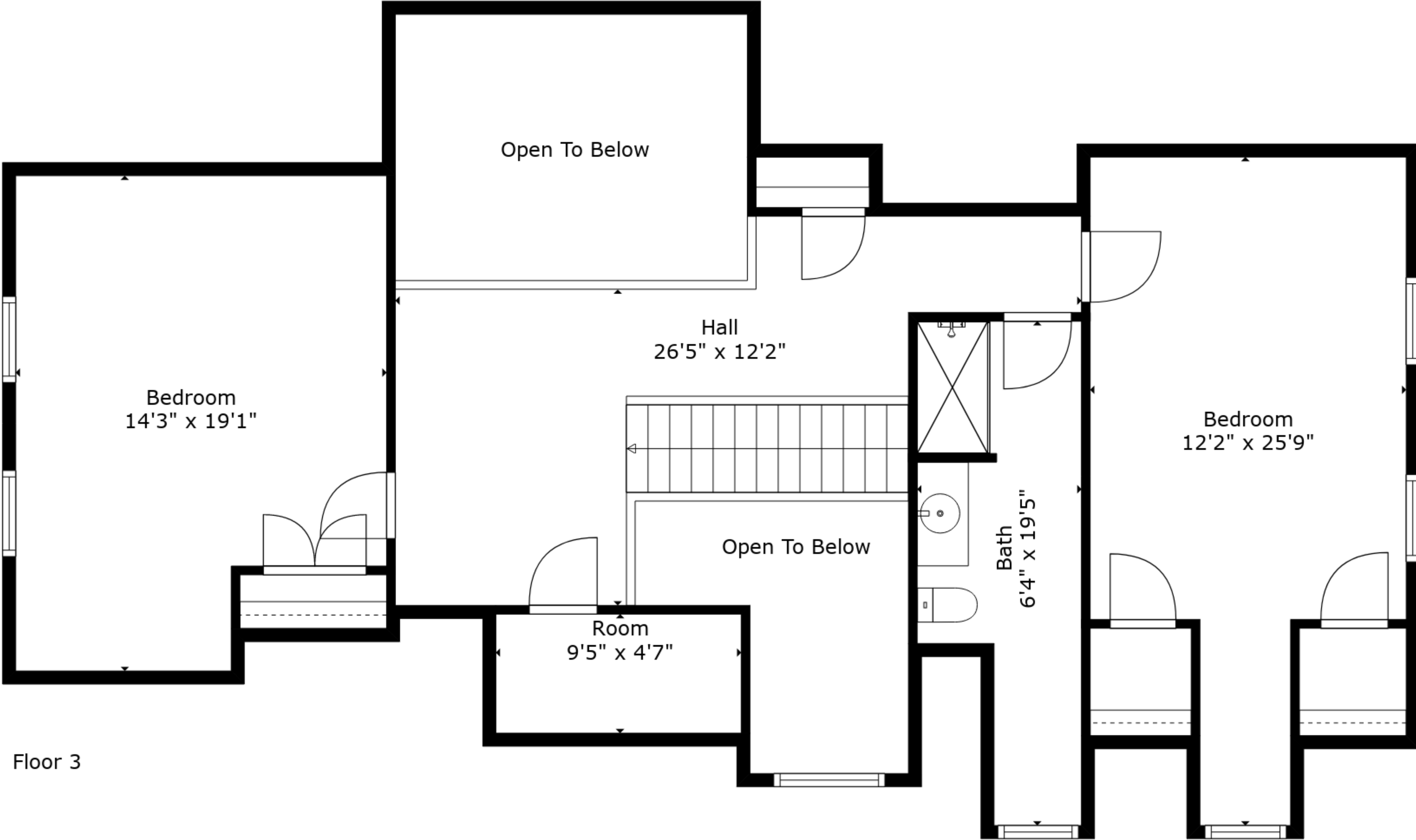
BELOW GROUND: 0 sq. ft, FLOOR 2: 1711 sq. ft, FLOOR 3: 940 sq. ft
EXCLUDED AREAS: BASEMENT: 1650 sq. ft, OPEN TO BELOW: 221 sq. ft, LOW CEILING: 29 sq. ft
WALLS: 282 sq. ft



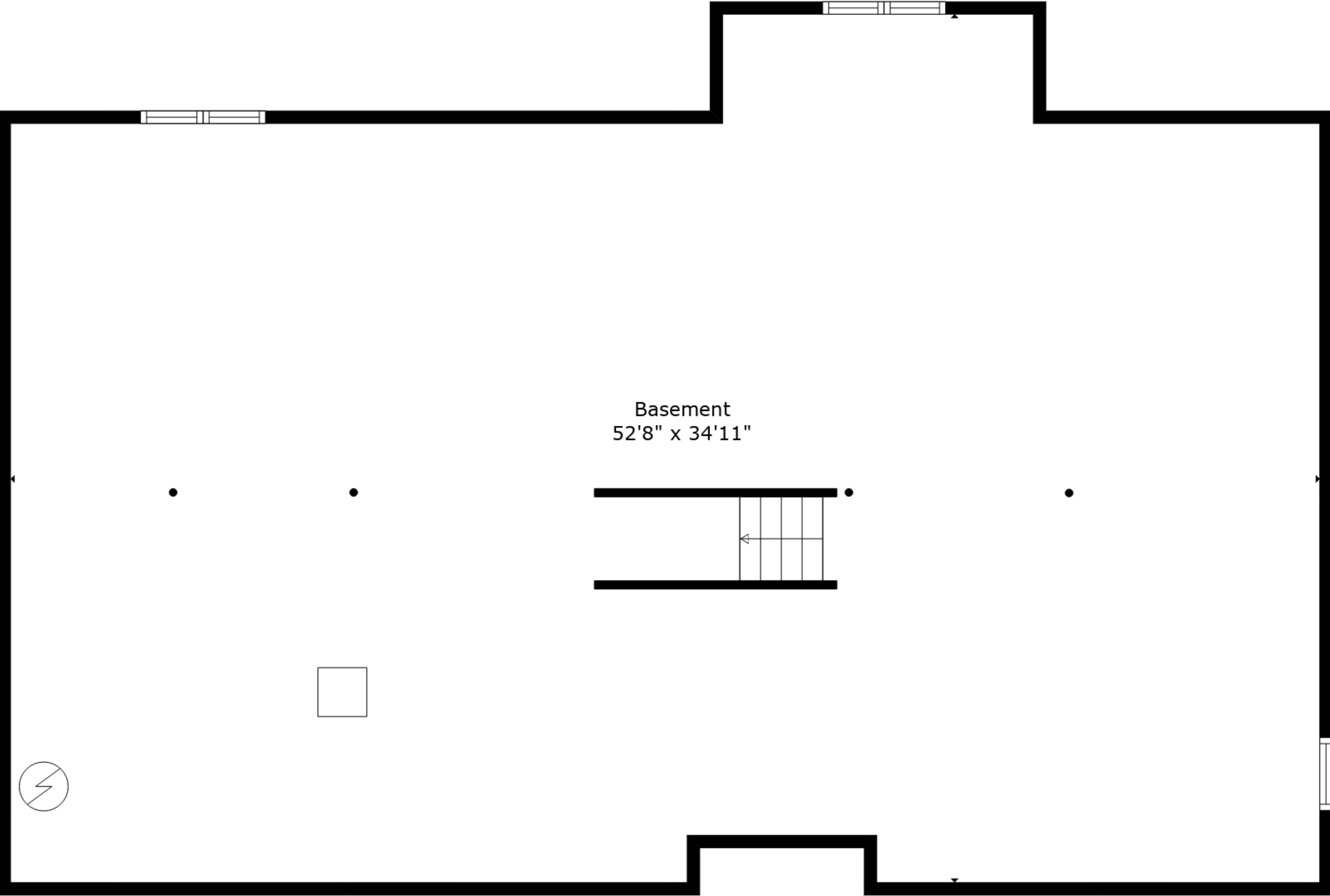
TOTAL: 2651 sq. ft
BELOW GROUND: 0 sq. ft, FLOOR 2: 1711 sq. ft, FLOOR 3: 940 sq. ft
EXCLUDED AREAS: BASEMENT: 1650 sq. ft, OPEN TO BELOW: 221 sq. ft, LOW CEILING: 29 sq. ft
WALLS: 282 sq. ft



Floor 2



Floor 3



Floor 1

TOTAL: 2651 sq. ft
BELOW GROUND: 0 sq. ft, FLOOR 2: 1711 sq. ft, FLOOR 3: 940 sq. ft
EXCLUDED AREAS: BASEMENT: 1650 sq. ft, OPEN TO BELOW: 221 sq. ft, LOW CEILING: 29 sq. ft
WALLS: 282 sq. ft