


# 2184 Conifer Loop, Belle Fourche, SD, US



## Property Summary

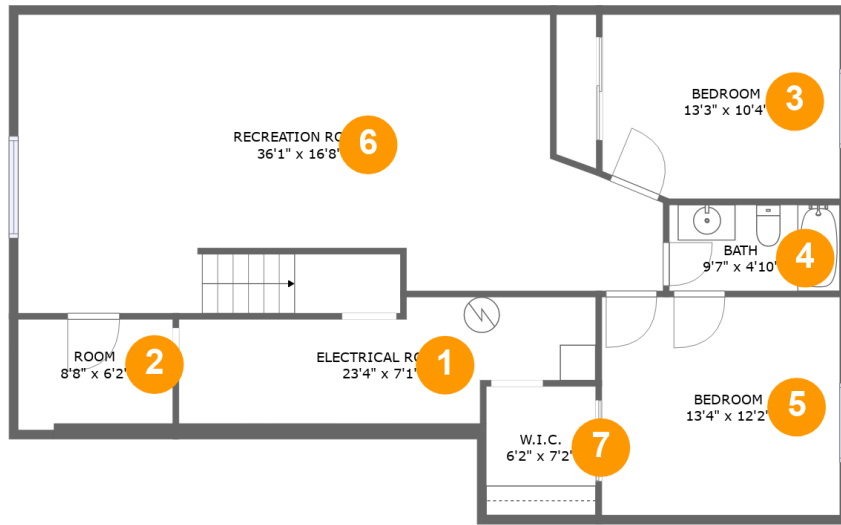
 **1** garages     **5** bedrooms     **3** bathrooms     **0** half baths

 **2** floors

 **2,376** Gross Living Area sqft

 **3,127** total sqft

# 2184 Conifer Loop, Belle Fourche, SD, US



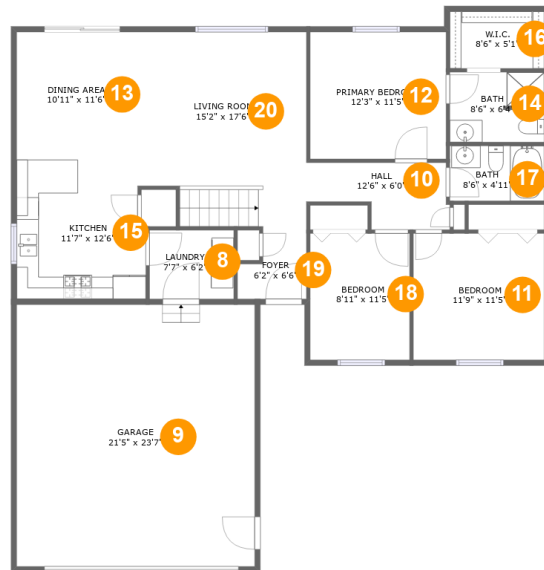
## Room Dimensions

Floor 1

Total sqft: 1237

Living area: 1025

#	Room name	Dimensions	Area (sqft)	Counted as Living Area
1	Electrical Room	23'4" x 7'1"	134 sq. ft	No
2	Room	8'8" x 6'2"	51 sq. ft	No
3	Bedroom	13'3" x 10'4"	134 sq. ft	Yes
4	Bath	9'7" x 4'10"	46 sq. ft	Yes
5	Bedroom	13'4" x 12'2"	162 sq. ft	Yes
6	Recreation Room	36'1" x 16'8"	521 sq. ft	Yes
7	W.i.c.	6'2" x 7'2"	44 sq. ft	Yes

**2184 Conifer Loop, Belle Fourche, SD, US****Room Dimensions****Floor 2****Total sqft: 1890****Living area: 1351**

#	Room name	Dimensions	Area (sqft)	Counted as Living Area
8	Laundry	7'7" x 6'2"	47 sq. ft	Yes
9	Garage	21'5" x 23'7"	505 sq. ft	No
10	Hall	12'6" x 6'0"	62 sq. ft	Yes
11	Bedroom	11'9" x 11'5"	134 sq. ft	Yes
12	Primary Bedroom	12'3" x 11'5"	140 sq. ft	Yes
13	Dining Area	10'11" x 11'6"	125 sq. ft	Yes
14	Bath	8'6" x 6'4"	52 sq. ft	Yes
15	Kitchen	11'7" x 12'6"	141 sq. ft	Yes
16	W.i.c.	8'6" x 5'1"	43 sq. ft	Yes
17	Bath	8'6" x 4'11"	42 sq. ft	Yes
18	Bedroom	8'11" x 11'5"	102 sq. ft	Yes

Scan captured on Fri, 04 Oct 2024 17:32:20 GMT

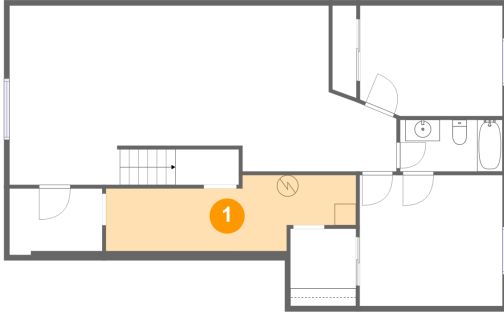
Information is calculated by CubiCasa technology; deemed highly reliable but not guaranteed.

**2184 Conifer Loop, Belle Fourche, SD, US**

#	Room name	Dimensions	Area (sqft)	Counted as Living Area
19	Foyer	6'2" x 6'6"	33 sq. ft	Yes
20	Living Room	15'2" x 17'6"	252 sq. ft	Yes

# 2184 Conifer Loop, Belle Fourche, SD, US

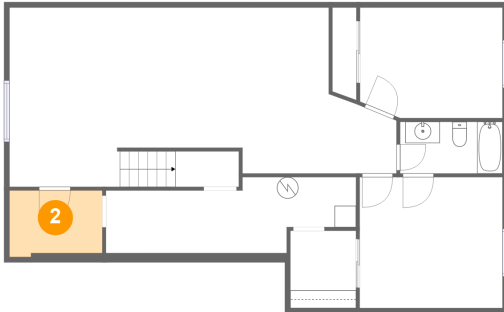
## 1 Floor 1 - Electrical Room



Dimensions: 23'4" x 7'1"  
Area: 134 sq. ft  
Counted as Living Area: No

Heated: No  
Finished: No  
Enclosed: Yes  
Contiguous: Yes  
Permitted: Yes  
Wet Space: No  
Addition: No  
Conversion: No

## 2 Floor 1 - Room

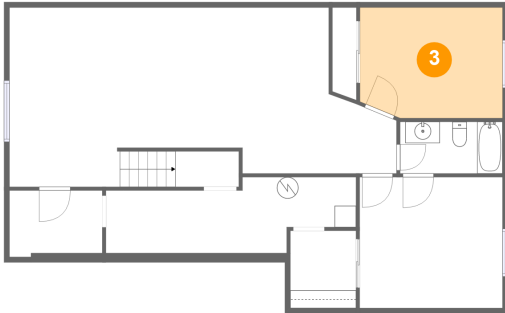


Dimensions: 8'8" x 6'2"  
Area: 51 sq. ft  
Counted as Living Area: No

Heated: Yes  
Finished: No  
Enclosed: Yes  
Contiguous: Yes  
Permitted: Yes  
Wet Space: No  
Addition: No  
Conversion: No

# 2184 Conifer Loop, Belle Fourche, SD, US

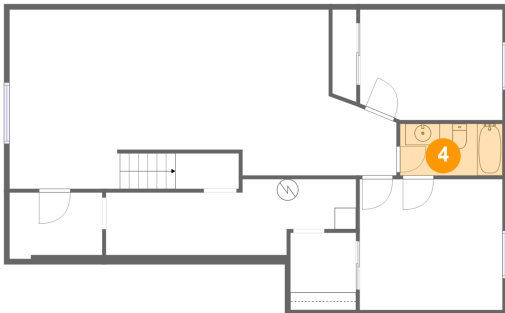
## 3 Floor 1 - Bedroom



Dimensions: 13'3" x 10'4"  
Area: 134 sq. ft  
Counted as Living Area:  
Yes

Heated: Yes  
Finished: Yes  
Enclosed: Yes  
Contiguous:  
Yes  
Permitted: Yes  
Wet Space: No  
Addition: No  
Conversion: No

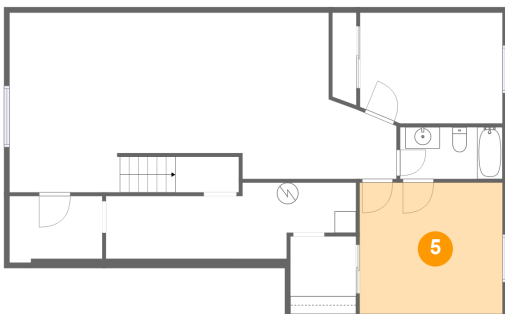
## 4 Floor 1 - Bath



Dimensions: 9'7" x 4'10"  
Area: 46 sq. ft  
Counted as Living Area:  
Yes

Heated: Yes  
Finished: Yes  
Enclosed: Yes  
Contiguous:  
Yes  
Permitted: Yes  
Wet Space: Yes  
Addition: No  
Conversion: No

## 5 Floor 1 - Bedroom

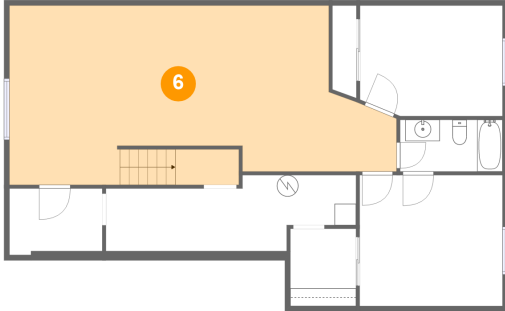


Dimensions: 13'4" x 12'2"  
Area: 162 sq. ft  
Counted as Living Area:  
Yes

Heated: Yes  
Finished: Yes  
Enclosed: Yes  
Contiguous:  
Yes  
Permitted: Yes  
Wet Space: No  
Addition: No  
Conversion: No

# 2184 Conifer Loop, Belle Fourche, SD, US

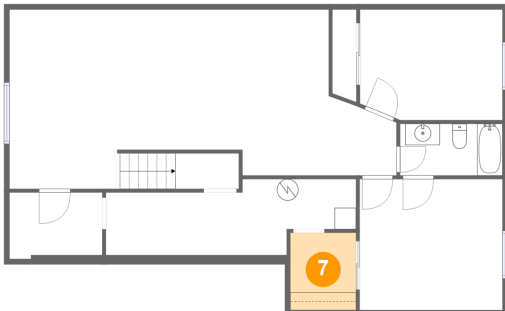
## 6 Floor 1 - Recreation Room



Dimensions: 36'1" x 16'8"  
Area: 521 sq. ft  
Counted as Living Area:  
Yes

Heated: Yes  
Finished: Yes  
Enclosed: Yes  
Contiguous:  
Yes  
Permitted: Yes  
Wet Space: No  
Addition: No  
Conversion: No

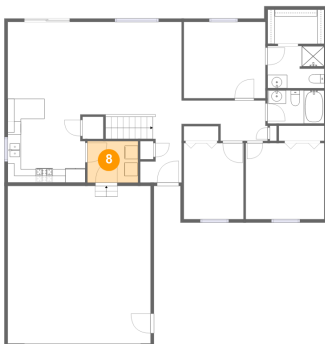
## 7 Floor 1 - W.i.c.



Dimensions: 6'2" x 7'2"  
Area: 44 sq. ft  
Counted as Living Area:  
Yes

Heated: Yes  
Finished: Yes  
Enclosed: Yes  
Contiguous:  
Yes  
Permitted: Yes  
Wet Space: No  
Addition: No  
Conversion: No

## 8 Floor 2 - Laundry

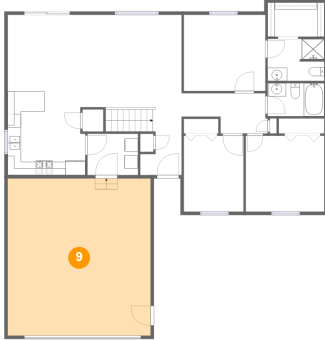


Dimensions: 7'7" x 6'2"  
Area: 47 sq. ft  
Counted as Living Area:  
Yes

Heated: Yes  
Finished: Yes  
Enclosed: Yes  
Contiguous:  
Yes  
Permitted: Yes  
Wet Space: No  
Addition: No  
Conversion: No

# 2184 Conifer Loop, Belle Fourche, SD, US

## 9 Floor 2 - Garage



Dimensions: 21'5" x 23'7"  
Area: 505 sq. ft  
Counted as Living Area: No

Heated: No  
Finished: No  
Enclosed: Yes  
Contiguous: Yes  
Permitted: Yes  
Wet Space: No  
Addition: No  
Conversion: No

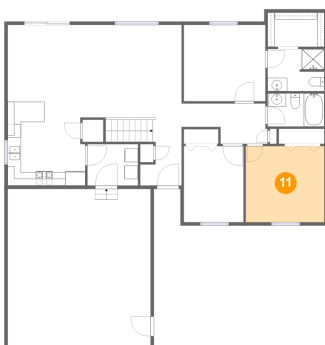
## 10 Floor 2 - Hall



Dimensions: 12'6" x 6'0"  
Area: 62 sq. ft  
Counted as Living Area: Yes

Heated: Yes  
Finished: Yes  
Enclosed: Yes  
Contiguous: Yes  
Permitted: Yes  
Wet Space: No  
Addition: No  
Conversion: No

## 11 Floor 2 - Bedroom



Dimensions: 11'9" x 11'5"  
Area: 134 sq. ft  
Counted as Living Area: Yes

Heated: Yes  
Finished: Yes  
Enclosed: Yes  
Contiguous: Yes  
Permitted: Yes  
Wet Space: No  
Addition: No  
Conversion: No



# 2184 Conifer Loop, Belle Fourche, SD, US

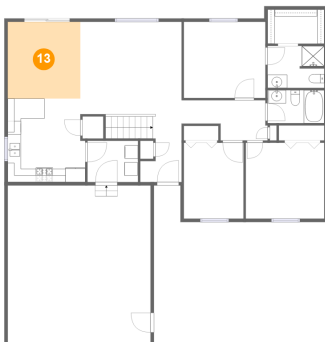
## 12 Floor 2 - Primary Bedroom



Dimensions: 12'3" x 11'5"  
Area: 140 sq. ft  
Counted as Living Area:  
Yes

Heated: Yes  
Finished: Yes  
Enclosed: Yes  
Contiguous:  
Yes  
Permitted: Yes  
Wet Space: No  
Addition: No  
Conversion: No

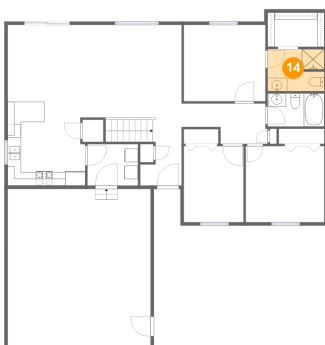
## 13 Floor 2 - Dining Area



Dimensions: 10'11" x 11'6"  
Area: 125 sq. ft  
Counted as Living Area:  
Yes

Heated: Yes  
Finished: Yes  
Enclosed: Yes  
Contiguous:  
Yes  
Permitted: Yes  
Wet Space: No  
Addition: No  
Conversion: No

## 14 Floor 2 - Bath

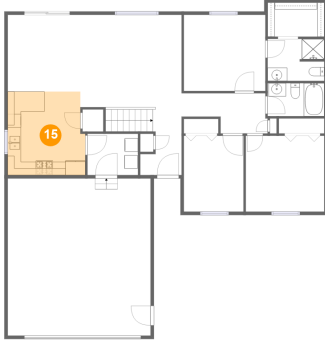


Dimensions: 8'6" x 6'4"  
Area: 52 sq. ft  
Counted as Living Area:  
Yes

Heated: Yes  
Finished: Yes  
Enclosed: Yes  
Contiguous:  
Yes  
Permitted: Yes  
Wet Space: Yes  
Addition: No  
Conversion: No

# 2184 Conifer Loop, Belle Fourche, SD, US

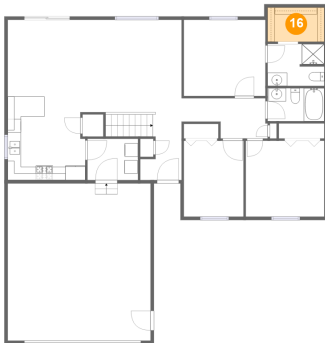
## 15 Floor 2 - Kitchen



**Dimensions:** 11'7" x 12'6"  
**Area:** 141 sq. ft  
**Counted as Living Area:**  
Yes

**Heated:** Yes  
**Finished:** Yes  
**Enclosed:** Yes  
**Contiguous:**  
Yes  
**Permitted:** Yes  
**Wet Space:** No  
**Addition:** No  
**Conversion:** No

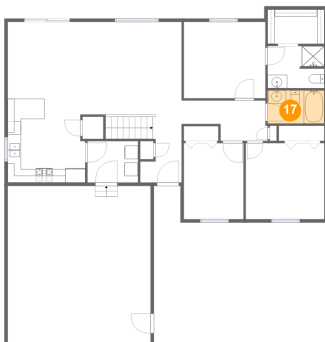
## 16 Floor 2 - W.i.c.



**Dimensions:** 8'6" x 5'1"  
**Area:** 43 sq. ft  
**Counted as Living Area:**  
Yes

**Heated:** Yes  
**Finished:** Yes  
**Enclosed:** Yes  
**Contiguous:**  
Yes  
**Permitted:** Yes  
**Wet Space:** No  
**Addition:** No  
**Conversion:** No

## 17 Floor 2 - Bath



**Dimensions:** 8'6" x 4'11"  
**Area:** 42 sq. ft  
**Counted as Living Area:**  
Yes

**Heated:** Yes  
**Finished:** Yes  
**Enclosed:** Yes  
**Contiguous:**  
Yes  
**Permitted:** Yes  
**Wet Space:** Yes  
**Addition:** No  
**Conversion:** No

# 2184 Conifer Loop, Belle Fourche, SD, US

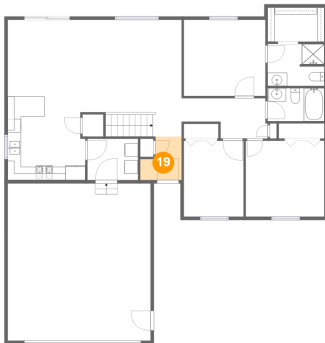
## 18 Floor 2 - Bedroom



Dimensions: 8'11" x 11'5"  
Area: 102 sq. ft  
Counted as Living Area:  
Yes

Heated: Yes  
Finished: Yes  
Enclosed: Yes  
Contiguous:  
Yes  
Permitted: Yes  
Wet Space: No  
Addition: No  
Conversion: No

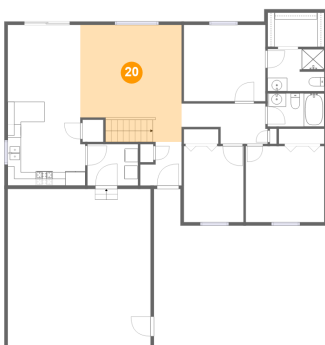
## 19 Floor 2 - Foyer



Dimensions: 6'2" x 6'6"  
Area: 33 sq. ft  
Counted as Living Area:  
Yes

Heated: Yes  
Finished: Yes  
Enclosed: Yes  
Contiguous:  
Yes  
Permitted: Yes  
Wet Space: No  
Addition: No  
Conversion: No

## 20 Floor 2 - Living Room



Dimensions: 15'2" x 17'6"  
Area: 252 sq. ft  
Counted as Living Area:  
Yes

Heated: Yes  
Finished: Yes  
Enclosed: Yes  
Contiguous:  
Yes  
Permitted: Yes  
Wet Space: No  
Addition: No  
Conversion: No