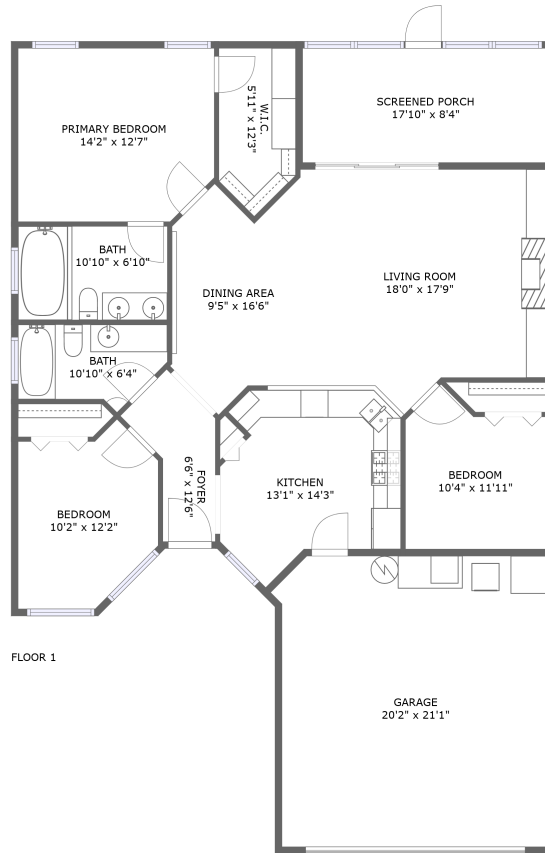


308 Sir Phillips Drive, Davenport, Polk County, Florida, United States, 33837



Property Summary



1 floors



3 bedrooms



2 bathrooms



1,955 total sqft

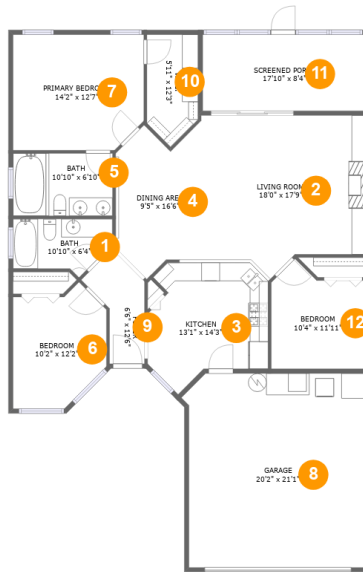


1 garages



1,356 Gross Living Area sqft

308 Sir Phillips Drive, Davenport, Polk County, Florida, United States, 33837



Room Dimensions

Floor 1

Total sqft: 1955

Living area: 1356

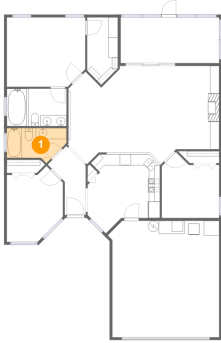
| # | Room name | Dimensions | Area (sqft) | Counted as Living Area |
|----|-----------------|----------------|-------------|------------------------|
| 1 | Bath | 10'10" x 6'4" | 56 sq. ft | Yes |
| 2 | Living Room | 18'0" x 17'9" | 285 sq. ft | Yes |
| 3 | Kitchen | 13'1" x 14'3" | 150 sq. ft | Yes |
| 4 | Dining Area | 9'5" x 16'6" | 128 sq. ft | Yes |
| 5 | Bath | 10'10" x 6'10" | 74 sq. ft | Yes |
| 6 | Bedroom | 10'2" x 12'2" | 115 sq. ft | Yes |
| 7 | Primary Bedroom | 14'2" x 12'7" | 174 sq. ft | Yes |
| 8 | Garage | 20'2" x 21'1" | 408 sq. ft | No |
| 9 | Foyer | 6'6" x 12'6" | 51 sq. ft | Yes |
| 10 | W.i.c. | 5'11" x 12'3" | 61 sq. ft | Yes |
| 11 | Screened Porch | 17'10" x 8'4" | 148 sq. ft | No |

**308 Sir Phillips Drive, Davenport, Polk County,
Florida, United States, 33837**

| # | Room name | Dimensions | Area (sqft) | Counted as Living Area |
|----|-----------|----------------|-------------|------------------------|
| 12 | Bedroom | 10'4" x 11'11" | 105 sq. ft | Yes |

308 Sir Phillips Drive, Davenport, Polk County, Florida, United States, 33837

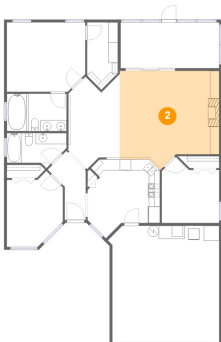
1 Floor 1 - Bath



Dimensions: 10'10" x 6'4"
Area: 56 sq. ft
Counted as Living Area:
Yes

Heated: Yes
Finished: Yes
Enclosed: Yes
Contiguous:
Yes
Permitted: Yes
Wet Space: Yes
Addition: No
Conversion: No

2 Floor 1 - Living Room

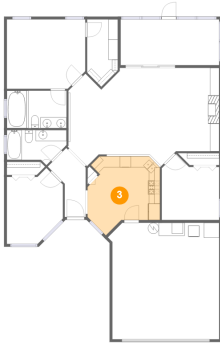


Dimensions: 18'0" x 17'9"
Area: 285 sq. ft
Counted as Living Area:
Yes

Heated: Yes
Finished: Yes
Enclosed: Yes
Contiguous:
Yes
Permitted: Yes
Wet Space: No
Addition: No
Conversion: No

308 Sir Phillips Drive, Davenport, Polk County, Florida, United States, 33837

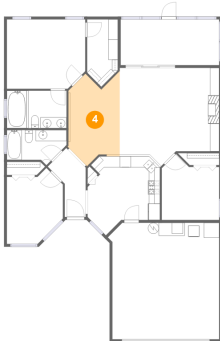
3 Floor 1 - Kitchen



Dimensions: 13'1" x 14'3"
Area: 150 sq. ft
Counted as Living Area:
Yes

Heated: Yes
Finished: Yes
Enclosed: Yes
Contiguous:
Yes
Permitted: Yes
Wet Space: No
Addition: No
Conversion: No

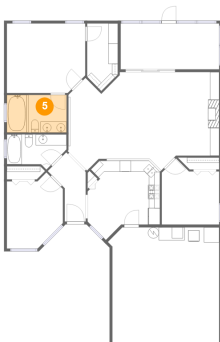
4 Floor 1 - Dining Area



Dimensions: 9'5" x 16'6"
Area: 128 sq. ft
Counted as Living Area:
Yes

Heated: Yes
Finished: Yes
Enclosed: Yes
Contiguous:
Yes
Permitted: Yes
Wet Space: No
Addition: No
Conversion: No

5 Floor 1 - Bath

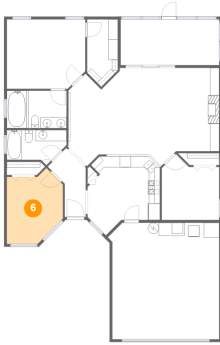


Dimensions: 10'10" x 6'10"
Area: 74 sq. ft
Counted as Living Area:
Yes

Heated: Yes
Finished: Yes
Enclosed: Yes
Contiguous:
Yes
Permitted: Yes
Wet Space: Yes
Addition: No
Conversion: No

308 Sir Phillips Drive, Davenport, Polk County, Florida, United States, 33837

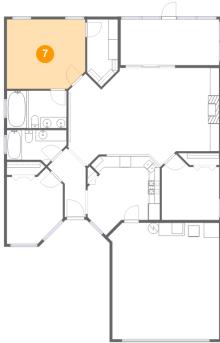
6 Floor 1 - Bedroom



Dimensions: 10'2" x 12'2"
Area: 115 sq. ft
Counted as Living Area:
Yes

Heated: Yes
Finished: Yes
Enclosed: Yes
Contiguous:
Yes
Permitted: Yes
Wet Space: No
Addition: No
Conversion: No

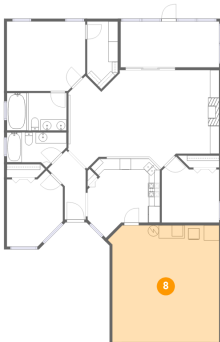
7 Floor 1 - Primary Bedroom



Dimensions: 14'2" x 12'7"
Area: 174 sq. ft
Counted as Living Area:
Yes

Heated: Yes
Finished: Yes
Enclosed: Yes
Contiguous:
Yes
Permitted: Yes
Wet Space: No
Addition: No
Conversion: No

8 Floor 1 - Garage

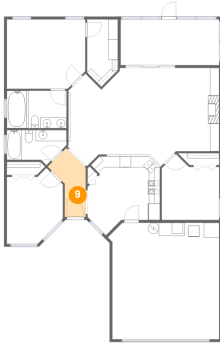


Dimensions: 20'2" x 21'1"
Area: 408 sq. ft
Counted as Living Area: No

Heated: No
Finished: No
Enclosed: Yes
Contiguous: Yes
Permitted: Yes
Wet Space: No
Addition: No
Conversion: No

308 Sir Phillips Drive, Davenport, Polk County, Florida, United States, 33837

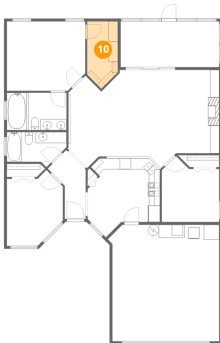
9 Floor 1 - Foyer



Dimensions: 6'6" x 12'6"
Area: 51 sq. ft
Counted as Living Area:
Yes

Heated: Yes
Finished: Yes
Enclosed: Yes
Contiguous:
Yes
Permitted: Yes
Wet Space: No
Addition: No
Conversion: No

10 Floor 1 - W.i.c.



Dimensions: 5'11" x 12'3"
Area: 61 sq. ft
Counted as Living Area:
Yes

Heated: Yes
Finished: Yes
Enclosed: Yes
Contiguous:
Yes
Permitted: Yes
Wet Space: No
Addition: No
Conversion: No

11 Floor 1 - Screened Porch

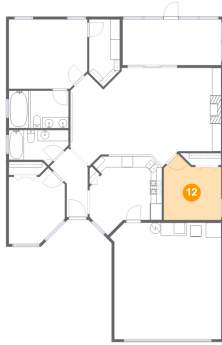


Dimensions: 17'10" x 8'4"
Area: 148 sq. ft
Counted as Living Area: No

Heated: No
Finished: Yes
Enclosed: No
Contiguous: Yes
Permitted: Yes
Wet Space: No
Addition: No
Conversion: No

**308 Sir Phillips Drive, Davenport, Polk County,
Florida, United States, 33837**

12 Floor 1 - Bedroom



Dimensions: 10'4" x 11'11"
Area: 105 sq. ft
Counted as Living Area:
Yes

Heated: Yes
Finished: Yes
Enclosed: Yes
Contiguous:
Yes
Permitted: Yes
Wet Space: No
Addition: No
Conversion: No