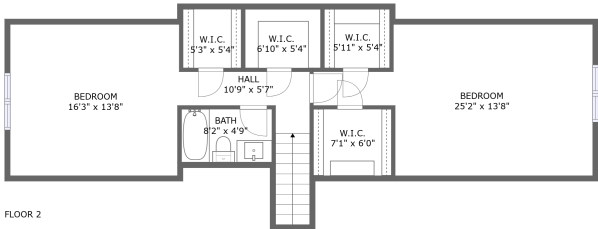


936 Duke of Suffolk Dr, Virginia Beach, VA, US



Property summary



1 Garages



4 Bedrooms



3 Bathrooms



0 Half baths



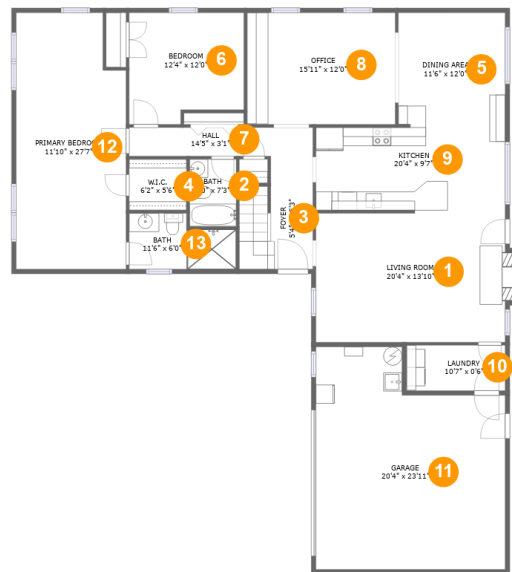
2 Floors



2,543
Gross living
area sqft



3,048
Total sqft

936 Duke of Suffolk Dr, Virginia Beach, VA, US**Room dimensions****Floor 1****Total sqft: 2228 Living area: 1757**

#		Dimensions	sqft	Counted as living area
1	Living Room	20'4" x 13'10"	290 sq. ft	Yes
2	Bath	5'0" x 7'3"	36 sq. ft	Yes
3	Foyer	5'4" x 15'3"	100 sq. ft	Yes
4	W.I.C.	6'2" x 5'6"	34 sq. ft	Yes
5	Dining Area	11'6" x 12'0"	138 sq. ft	Yes
6	Bedroom	12'4" x 12'0"	137 sq. ft	Yes
7	Hall	14'5" x 3'1"	44 sq. ft	Yes
8	Office	15'11" x 12'0"	191 sq. ft	Yes
9	Kitchen	20'4" x 9'7"	187 sq. ft	Yes
10	Laundry	10'7" x 0'6"	52 sq. ft	Yes
11	Garage	20'4" x 23'11"	429 sq. ft	No

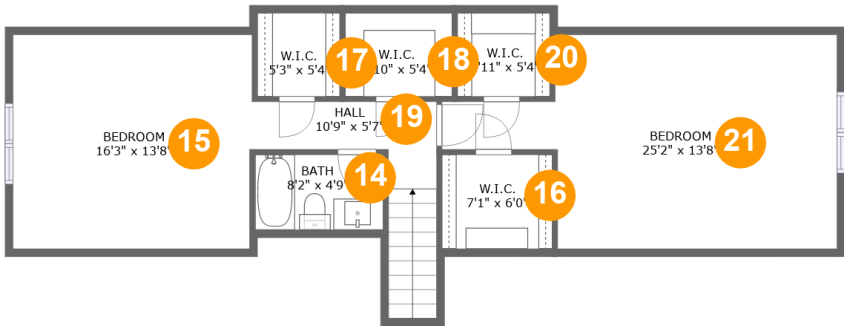
Scan captured on Fri, 21 Mar 2025 16:45:56 GMT

Information is calculated by Cubicasa technology deemed highly reliable but not guaranteed.

936 Duke of Suffolk Dr, Virginia Beach, VA, US

#		Dimensions	sqft	Counted as living area
12	Primary Bedroom	11'10" x 27'7"	310 sq. ft	Yes
13	Bath	11'6" x 6'0"	60 sq. ft	Yes

936 Duke of Suffolk Dr, Virginia Beach, VA, US



Room dimensions

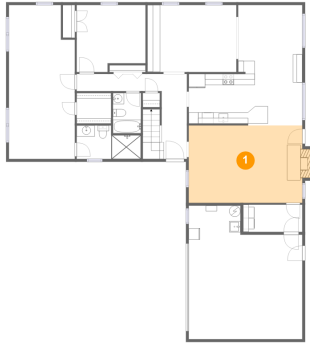
Floor 2

Total sqft: 820 Living area: 786

#		Dimensions	sqft	Counted as living area
14	Bath	8'2" x 4'9"	39 sq. ft	Yes
15	Bedroom	16'3" x 13'8"	210 sq. ft	Yes
16	W.I.C.	7'1" x 6'0"	42 sq. ft	Yes
17	W.I.C.	5'3" x 5'4"	21 sq. ft	Yes
18	W.I.C.	6'10" x 5'4"	27 sq. ft	Yes
19	Hall	10'9" x 5'7"	66 sq. ft	Yes
20	W.I.C.	5'11" x 5'4"	23 sq. ft	Yes
21	Bedroom	25'2" x 13'8"	266 sq. ft	Yes

936 Duke of Suffolk Dr, Virginia Beach, VA, US

1 Floor 1 - Living Room



Dimensions: 20'4" x 13'10"
Area: 290 sq. ft
Counted as living area: Yes

Heated: Yes
Finished: Yes
Enclosed: Yes
Contiguous: Yes
Permitted: Yes
Wet space: No
Addition: No
Conversion: No

2 Floor 1 - Bath



Dimensions: 5'0" x 7'3"
Area: 36 sq. ft
Counted as living area: Yes

Heated: Yes
Finished: Yes
Enclosed: Yes
Contiguous: Yes
Permitted: Yes
Wet space: Yes
Addition: No
Conversion: No

936 Duke of Suffolk Dr, Virginia Beach, VA, US**3 Floor 1 - Foyer**

Dimensions: 5'4" x 15'3"
Area: 100 sq. ft
Counted as living area: Yes

Heated: Yes
Finished: Yes
Enclosed: Yes
Contiguous: Yes
Permitted: Yes
Wet space: No
Addition: No
Conversion: No

4 Floor 1 - W.I.C.

Dimensions: 6'2" x 5'6"
Area: 34 sq. ft
Counted as living area: Yes

Heated: Yes
Finished: Yes
Enclosed: Yes
Contiguous: Yes
Permitted: Yes
Wet space: No
Addition: No
Conversion: No

5 Floor 1 - Dining Area

Dimensions: 11'6" x 12'0"
Area: 138 sq. ft
Counted as living area: Yes

Heated: Yes
Finished: Yes
Enclosed: Yes
Contiguous: Yes
Permitted: Yes
Wet space: No
Addition: No
Conversion: No

936 Duke of Suffolk Dr, Virginia Beach, VA, US**6 Floor 1 - Bedroom**

Dimensions: 12'4" x 12'0"
Area: 137 sq. ft
Counted as living area: Yes

Heated: Yes
Finished: Yes
Enclosed: Yes
Contiguous: Yes
Permitted: Yes
Wet space: No
Addition: No
Conversion: No

7 Floor 1 - Hall

Dimensions: 14'5" x 3'1"
Area: 44 sq. ft
Counted as living area: Yes

Heated: Yes
Finished: Yes
Enclosed: Yes
Contiguous: Yes
Permitted: Yes
Wet space: No
Addition: No
Conversion: No

8 Floor 1 - Office

Dimensions: 15'11" x 12'0"
Area: 191 sq. ft
Counted as living area: Yes

Heated: Yes
Finished: Yes
Enclosed: Yes
Contiguous: Yes
Permitted: Yes
Wet space: No
Addition: No
Conversion: No

936 Duke of Suffolk Dr, Virginia Beach, VA, US**9 Floor 1 - Kitchen**

Dimensions: 20'4" x 9'7"
Area: 187 sq. ft
Counted as living area: Yes

Heated: Yes
Finished: Yes
Enclosed: Yes
Contiguous: Yes
Permitted: Yes
Wet space: No
Addition: No
Conversion: No

10 Floor 1 - Laundry

Dimensions: 10'7" x 0'6"
Area: 52 sq. ft
Counted as living area: Yes

Heated: Yes
Finished: Yes
Enclosed: Yes
Contiguous: Yes
Permitted: Yes
Wet space: No
Addition: No
Conversion: No

11 Floor 1 - Garage

Dimensions: 20'4" x 23'11"
Area: 429 sq. ft
Counted as living area: No

Heated: No
Finished: No
Enclosed: Yes
Contiguous: Yes
Permitted: Yes
Wet space: No
Addition: No
Conversion: No

936 Duke of Suffolk Dr, Virginia Beach, VA, US

12 Floor 1 - Primary Bedroom



Dimensions: 11'10" x 27'7"
Area: 310 sq. ft
Counted as living area: Yes

Heated: Yes
Finished: Yes
Enclosed: Yes
Contiguous: Yes
Permitted: Yes
Wet space: No
Addition: No
Conversion: No

13 Floor 1 - Bath



Dimensions: 11'6" x 6'0"
Area: 60 sq. ft
Counted as living area: Yes

Heated: Yes
Finished: Yes
Enclosed: Yes
Contiguous: Yes
Permitted: Yes
Wet space: Yes
Addition: No
Conversion: No

14 Floor 2 - Bath



Dimensions: 8'2" x 4'9"
Area: 39 sq. ft
Counted as living area: Yes

Heated: Yes
Finished: Yes
Enclosed: Yes
Contiguous: Yes
Permitted: Yes
Wet space: Yes
Addition: No
Conversion: No

936 Duke of Suffolk Dr, Virginia Beach, VA, US**15 Floor 2 - Bedroom**

Dimensions: 16'3" x 13'8"
Area: 210 sq. ft
Counted as living area: Yes

Heated: Yes
Finished: Yes
Enclosed: Yes
Contiguous: Yes
Permitted: Yes
Wet space: No
Addition: No
Conversion: No

16 Floor 2 - W.I.C.

Dimensions: 7'1" x 6'0"
Area: 42 sq. ft
Counted as living area: Yes

Heated: Yes
Finished: Yes
Enclosed: Yes
Contiguous: Yes
Permitted: Yes
Wet space: No
Addition: No
Conversion: No

17 Floor 2 - W.I.C.

Dimensions: 5'3" x 5'4"
Area: 21 sq. ft
Counted as living area: Yes

Heated: Yes
Finished: Yes
Enclosed: Yes
Contiguous: Yes
Permitted: Yes
Wet space: No
Addition: No
Conversion: No

936 Duke of Suffolk Dr, Virginia Beach, VA, US**18 Floor 2 - W.I.C.**

Dimensions: 6'10" x 5'4"
Area: 27 sq. ft
Counted as living area: Yes

Heated: Yes
Finished: Yes
Enclosed: Yes
Contiguous: Yes
Permitted: Yes
Wet space: No
Addition: No
Conversion: No

19 Floor 2 - Hall

Dimensions: 10'9" x 5'7"
Area: 66 sq. ft
Counted as living area: Yes

Heated: Yes
Finished: Yes
Enclosed: Yes
Contiguous: Yes
Permitted: Yes
Wet space: No
Addition: No
Conversion: No

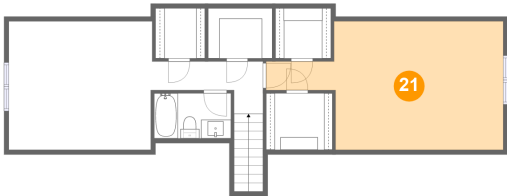
20 Floor 2 - W.I.C.

Dimensions: 5'11" x 5'4"
Area: 23 sq. ft
Counted as living area: Yes

Heated: Yes
Finished: Yes
Enclosed: Yes
Contiguous: Yes
Permitted: Yes
Wet space: No
Addition: No
Conversion: No

936 Duke of Suffolk Dr, Virginia Beach, VA, US

21 Floor 2 - Bedroom



Dimensions: 25'2" x 13'8"
Area: 266 sq. ft
Counted as living area: Yes

Heated: Yes
Finished: Yes
Enclosed: Yes
Contiguous: Yes
Permitted: Yes
Wet space: No
Addition: No
Conversion: No