



Home report


4920 Bear Ridge Circle,Roanoke,Virginia,United States




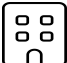
Property summary


 **1** Garages


 **4** Bedrooms

 **3** Bathrooms

 **1** Half baths

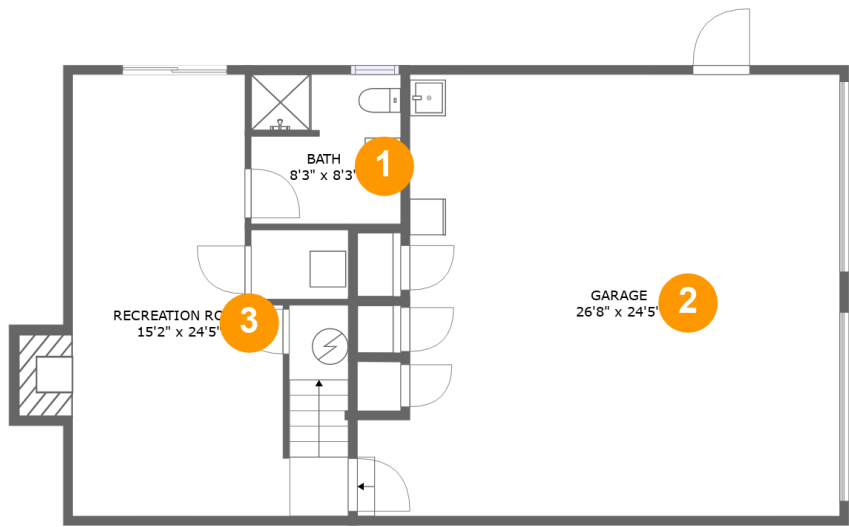
 **3** Floors

 **2,901** Gross living area sqft

 **3,787** Total sqft

Home report

4920 Bear Ridge Circle,Roanoke,Virginia,United States



Room dimensions

Floor 1 Total sqft: 1118 Living area: 439

#		Dimensions	sqft	Counted as living area
1	Bath	8'3" x 8'3"	67 sq. ft	Yes
2	Garage	26'8" x 24'5"	594 sq. ft	No
3	Recreation Room	15'2" x 24'5"	309 sq. ft	Yes

Home report

4920 Bear Ridge Circle,Roanoke,Virginia,United States



Room dimensions

Floor 2

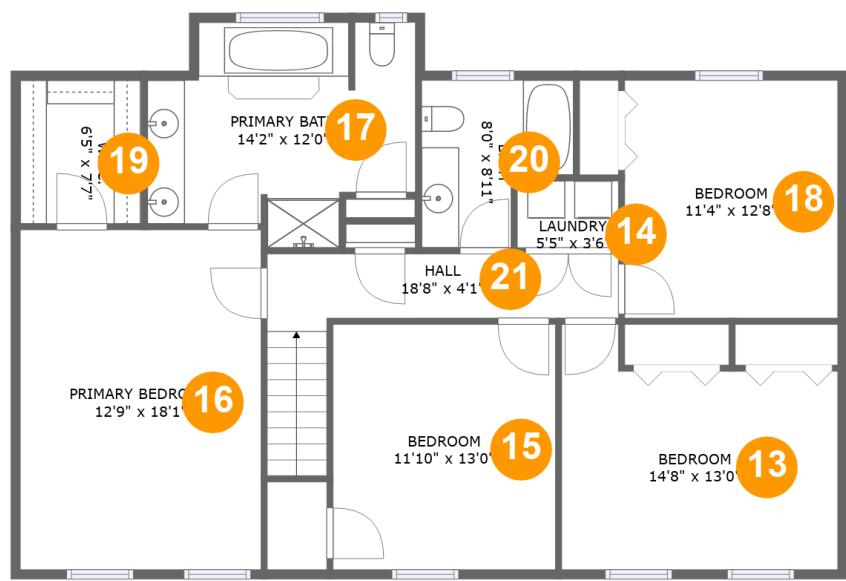
Total sqft: 1431

Living area: 1224

#		Dimensions	sqft	Counted as living area
4	Foyer	8'11" x 13'0"	128 sq. ft	Yes
5	Kitchen	10'9" x 13'0"	128 sq. ft	Yes
6	Screened Porch	13'6" x 11'1"	149 sq. ft	No
7	Dining Room	11'4" x 12'6"	141 sq. ft	Yes
8	Porch	5'10" x 2'5"	30 sq. ft	No
9	Breakfast Area	8'4" x 16'1"	129 sq. ft	Yes
10	WC	2'11" x 5'10"	17 sq. ft	Yes
11	Family Room	12'8" x 26'0"	339 sq. ft	Yes
12	Living Room	17'11" x 13'2"	236 sq. ft	Yes

Home report

4920 Bear Ridge Circle,Roanoke,Virginia,United States

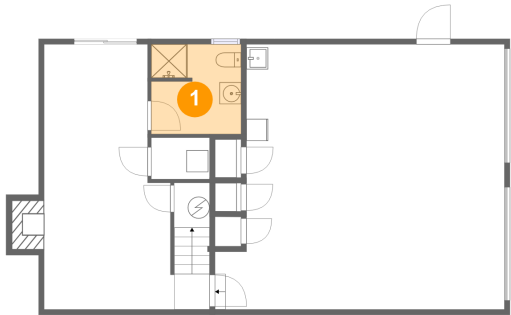


Room dimensions

Floor 3 Total sqft: 1238 Living area: 1238

#		Dimensions	sqft	Counted as living area
13	Bedroom	14'8" x 13'0"	162 sq. ft	Yes
14	Laundry	5'5" x 3'6"	19 sq. ft	Yes
15	Bedroom	11'10" x 13'0"	154 sq. ft	Yes
16	Primary Bedroom	12'9" x 18'1"	231 sq. ft	Yes
17	Primary Bath	14'2" x 12'0"	140 sq. ft	Yes
18	Bedroom	11'4" x 12'8"	143 sq. ft	Yes
19	W.I.C.	6'5" x 7'7"	49 sq. ft	Yes
20	Bath	8'0" x 8'11"	59 sq. ft	Yes
21	Hall	18'8" x 4'1"	90 sq. ft	Yes

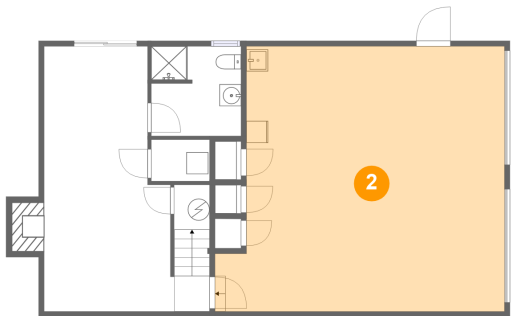
1 Floor 1 - Bath



Dimensions: 8'3" x 8'3"
Area: 67 sq. ft
Counted as living area: Yes

Heated: Yes
Finished: Yes
Enclosed: Yes
Contiguous: Yes
Permitted: Yes
Wet space: Yes
Addition: No
Conversion: No

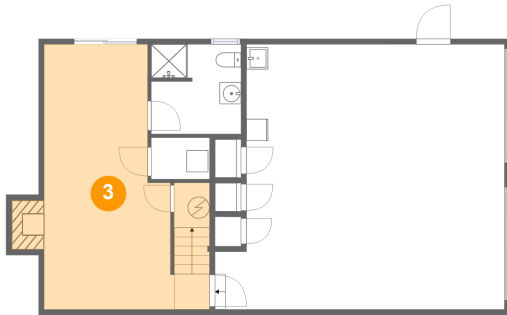
2 Floor 1 - Garage



Dimensions: 26'8" x 24'5"
Area: 594 sq. ft
Counted as living area: No

Heated: No
Finished: No
Enclosed: Yes
Contiguous: Yes
Permitted: Yes
Wet space: No
Addition: No
Conversion: No

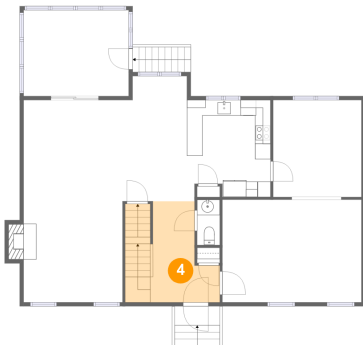
3 Floor 1 - Recreation Room



Dimensions: 15'2" x 24'5"
Area: 309 sq. ft
Counted as living area: Yes

Heated: Yes
Finished: Yes
Enclosed: Yes
Contiguous: Yes
Permitted: Yes
Wet space: No
Addition: No
Conversion: No

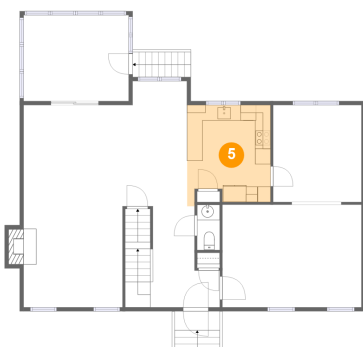
4 Floor 2 - Foyer



Dimensions: 8'11" x 13'0"
Area: 128 sq. ft
Counted as living area: Yes

Heated: Yes
Finished: Yes
Enclosed: Yes
Contiguous: Yes
Permitted: Yes
Wet space: No
Addition: No
Conversion: No

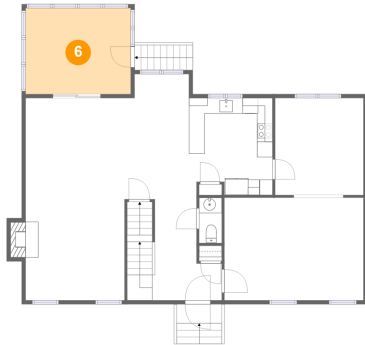
5 Floor 2 - Kitchen



Dimensions: 10'9" x 13'0"
Area: 128 sq. ft
Counted as living area: Yes

Heated: Yes
Finished: Yes
Enclosed: Yes
Contiguous: Yes
Permitted: Yes
Wet space: No
Addition: No
Conversion: No

6 Floor 2 - Screened Porch



Dimensions: 13'6" x 11'1"
Area: 149 sq. ft
Counted as living area: No

Heated: No
Finished: Yes
Enclosed: No
Contiguous: Yes
Permitted: Yes
Wet space: No
Addition: No
Conversion: No

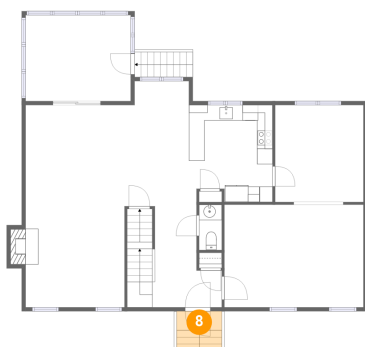
7 Floor 2 - Dining Room



Dimensions: 11'4" x 12'6"
Area: 141 sq. ft
Counted as living area: Yes

Heated: Yes
Finished: Yes
Enclosed: Yes
Contiguous: Yes
Permitted: Yes
Wet space: No
Addition: No
Conversion: No

8 Floor 2 - Porch



Dimensions: 5'10" x 2'5"
Area: 30 sq. ft
Counted as living area: No

Heated: No
Finished: Yes
Enclosed: No
Contiguous: Yes
Permitted: Yes
Wet space: No
Addition: No
Conversion: No

9 Floor 2 - Breakfast Area



Dimensions: 8'4" x 16'1"
Area: 129 sq. ft
Counted as living area: Yes

Heated: Yes
Finished: Yes
Enclosed: Yes
Contiguous: Yes
Permitted: Yes
Wet space: No
Addition: No
Conversion: No

10 Floor 2 - WC



Dimensions: 2'11" x 5'10"
Area: 17 sq. ft
Counted as living area: Yes

Heated: Yes
Finished: Yes
Enclosed: Yes
Contiguous: Yes
Permitted: Yes
Wet space: Yes
Addition: No
Conversion: No

11 Floor 2 - Family Room



Dimensions: 12'8" x 26'0"
Area: 339 sq. ft
Counted as living area: Yes

Heated: Yes
Finished: Yes
Enclosed: Yes
Contiguous: Yes
Permitted: Yes
Wet space: No
Addition: No
Conversion: No

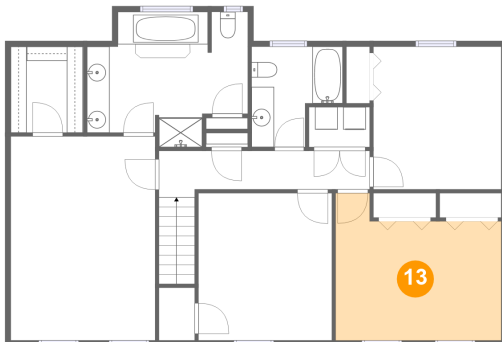
12 Floor 2 - Living Room



Dimensions: 17'11" x 13'2"
Area: 236 sq. ft
Counted as living area: Yes

Heated: Yes
Finished: Yes
Enclosed: Yes
Contiguous: Yes
Permitted: Yes
Wet space: No
Addition: No
Conversion: No

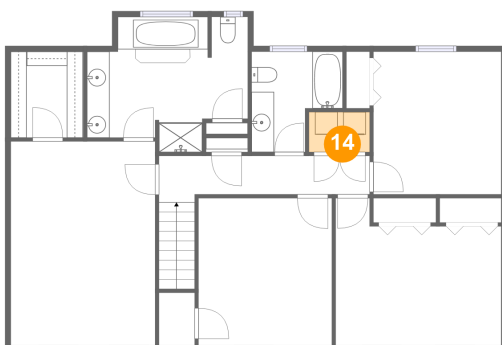
13 Floor 3 - Bedroom



Dimensions: 14'8" x 13'0"
Area: 162 sq. ft
Counted as living area: Yes

Heated: Yes
Finished: Yes
Enclosed: Yes
Contiguous: Yes
Permitted: Yes
Wet space: No
Addition: No
Conversion: No

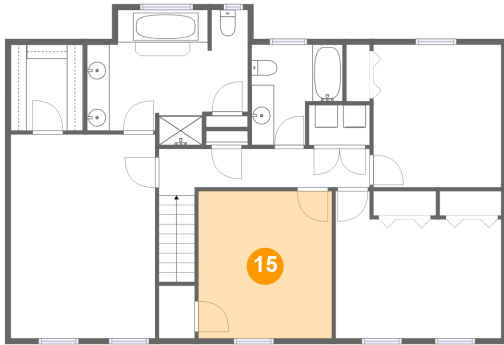
14 Floor 3 - Laundry



Dimensions: 5'5" x 3'6"
Area: 19 sq. ft
Counted as living area: Yes

Heated: Yes
Finished: Yes
Enclosed: Yes
Contiguous: Yes
Permitted: Yes
Wet space: No
Addition: No
Conversion: No

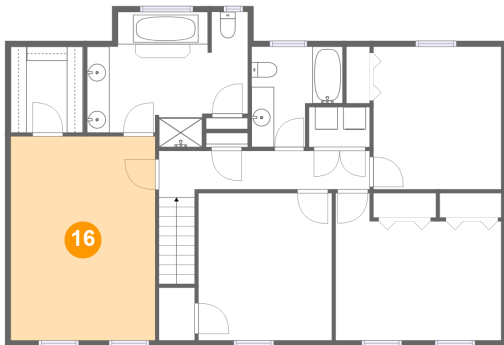
15 Floor 3 - Bedroom



Dimensions: 11'10" x 13'0"
Area: 154 sq. ft
Counted as living area: Yes

Heated: Yes
Finished: Yes
Enclosed: Yes
Contiguous: Yes
Permitted: Yes
Wet space: No
Addition: No
Conversion: No

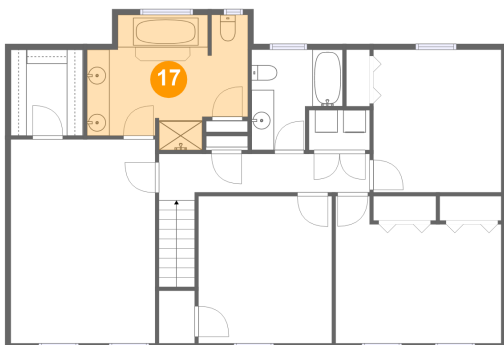
16 Floor 3 - Primary Bedroom



Dimensions: 12'9" x 18'1"
Area: 231 sq. ft
Counted as living area: Yes

Heated: Yes
Finished: Yes
Enclosed: Yes
Contiguous: Yes
Permitted: Yes
Wet space: No
Addition: No
Conversion: No

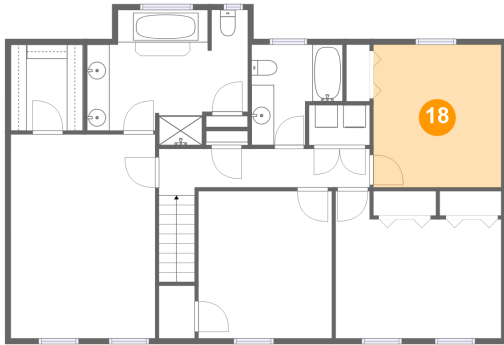
17 Floor 3 - Primary Bath



Dimensions: 14'2" x 12'0"
Area: 140 sq. ft
Counted as living area: Yes

Heated: Yes
Finished: Yes
Enclosed: Yes
Contiguous: Yes
Permitted: Yes
Wet space: Yes
Addition: No
Conversion: No

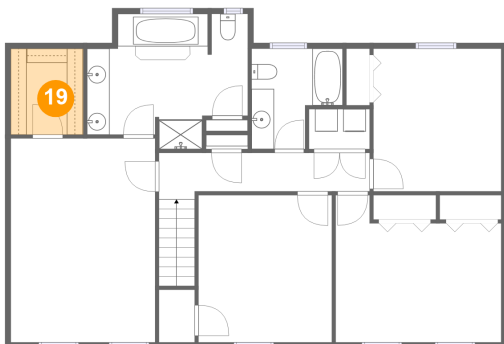
18 Floor 3 - Bedroom



Dimensions: 11'4" x 12'8"
Area: 143 sq. ft
Counted as living area: Yes

Heated: Yes
Finished: Yes
Enclosed: Yes
Contiguous: Yes
Permitted: Yes
Wet space: No
Addition: No
Conversion: No

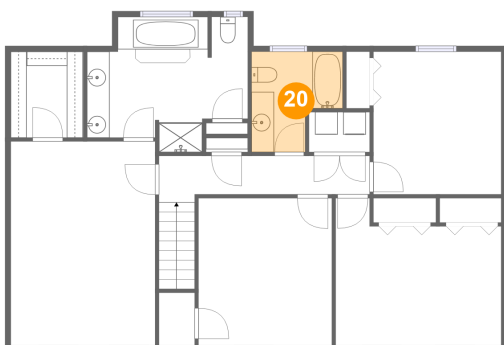
19 Floor 3 - W.I.C.



Dimensions: 6'5" x 7'7"
Area: 49 sq. ft
Counted as living area: Yes

Heated: Yes
Finished: Yes
Enclosed: Yes
Contiguous: Yes
Permitted: Yes
Wet space: No
Addition: No
Conversion: No

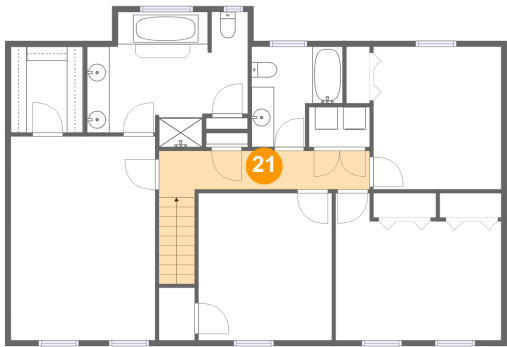
20 Floor 3 - Bath



Dimensions: 8'0" x 8'11"
Area: 59 sq. ft
Counted as living area: Yes

Heated: Yes
Finished: Yes
Enclosed: Yes
Contiguous: Yes
Permitted: Yes
Wet space: Yes
Addition: No
Conversion: No

21 Floor 3 - Hall



Dimensions: 18'8" x 4'1"
Area: 90 sq. ft
Counted as living area: Yes

Heated: Yes
Finished: Yes
Enclosed: Yes
Contiguous: Yes
Permitted: Yes
Wet space: No
Addition: No
Conversion: No