

# 1062 Kingsport Drive, Wheeling, Cook County, Illinois, United States, 60090




## Property Summary


 **1** garages

 **4** bedrooms

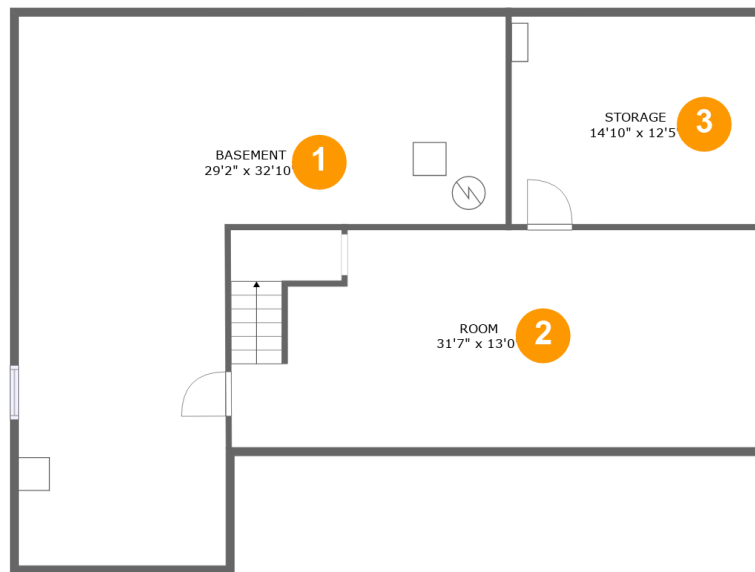
 **2** bathrooms

 **1** half baths

 **3** floors

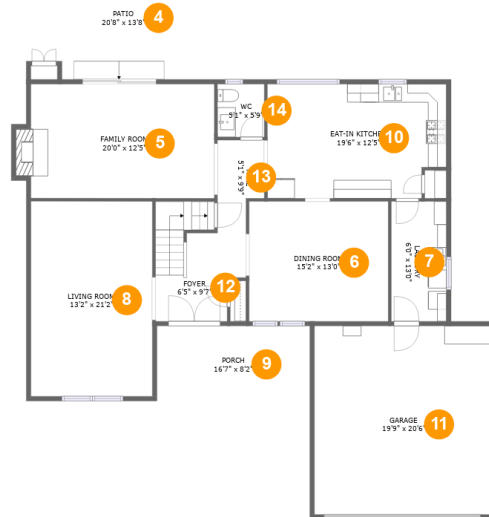
 **2,439** Gross Living Area sqft

 **4,611** total sqft

**1062 Kingsport Drive, Wheeling, Cook County,  
Illinois, United States, 60090****Room Dimensions****Floor 1****Total sqft: 1308****Living area: 0**

#	Room name	Dimensions	Area (sqft)	Counted as Living Area
1	Basement	29'2" x 32'10"	615 sq. ft	No
2	Room	31'7" x 13'0"	407 sq. ft	No
3	Storage	14'10" x 12'5"	184 sq. ft	No

# 1062 Kingsport Drive, Wheeling, Cook County, Illinois, United States, 60090



## Room Dimensions

Floor 2

Total sqft: 2216

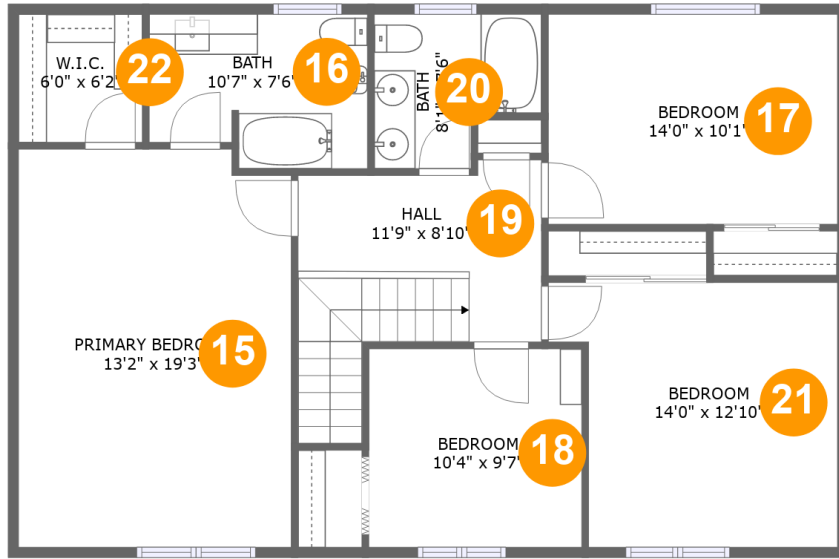
Living area: 1352

#	Room name	Dimensions	Area (sqft)	Counted as Living Area
4	Patio	20'8" x 13'8"	273 sq. ft	No
5	Family Room	20'0" x 12'5"	260 sq. ft	Yes
6	Dining Room	15'2" x 13'0"	197 sq. ft	Yes
7	Laundry	6'0" x 13'0"	78 sq. ft	Yes
8	Living Room	13'2" x 21'2"	280 sq. ft	Yes
9	Porch	16'7" x 8'2"	135 sq. ft	No
10	Eat-in Kitchen	19'6" x 12'5"	233 sq. ft	Yes
11	Garage	19'9" x 20'6"	405 sq. ft	No
12	Foyer	6'5" x 9'7"	108 sq. ft	Yes
13	Hall	5'1" x 9'9"	43 sq. ft	Yes
14	Wc	5'1" x 5'9"	29 sq. ft	Yes

Scan captured on Tue, 29 Oct 2024 17:05:46 GMT

Information is calculated by CubiCasa technology; deemed highly reliable but not guaranteed.

**1062 Kingsport Drive, Wheeling, Cook County, Illinois, United States, 60090**



**Room Dimensions**

**Floor 3**

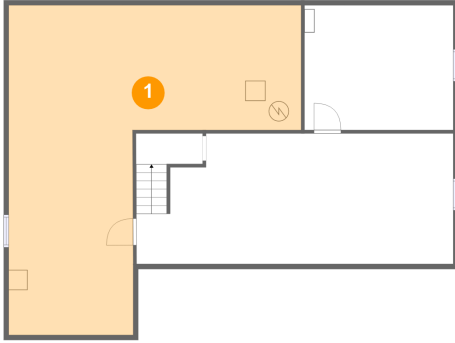
**Total sqft: 1087**

**Living area: 1087**

#	Room name	Dimensions	Area (sqft)	Counted as Living Area
15	Primary Bedroom	13'2" x 19'3"	250 sq. ft	Yes
16	Bath	10'7" x 7'6"	73 sq. ft	Yes
17	Bedroom	14'0" x 10'1"	142 sq. ft	Yes
18	Bedroom	10'4" x 9'7"	99 sq. ft	Yes
19	Hall	11'9" x 8'10"	112 sq. ft	Yes
20	Bath	8'1" x 7'6"	51 sq. ft	Yes
21	Bedroom	14'0" x 12'10"	160 sq. ft	Yes
22	W.i.c.	6'0" x 6'2"	37 sq. ft	Yes

# 1062 Kingsport Drive, Wheeling, Cook County, Illinois, United States, 60090

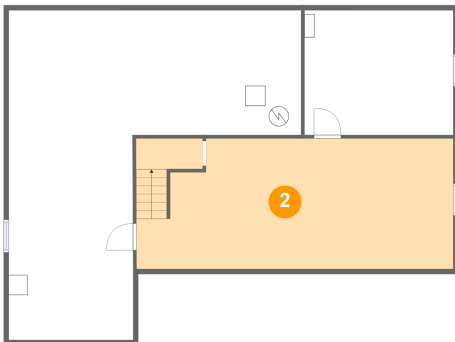
## 1 Floor 1 - Basement



Dimensions: 29'2" x 32'10"  
Area: 615 sq. ft  
Counted as Living Area: No

Heated: Yes  
Finished: No  
Enclosed: Yes  
Contiguous: Yes  
Permitted: Yes  
Wet Space: No  
Addition: No  
Conversion: No

## 2 Floor 1 - Room

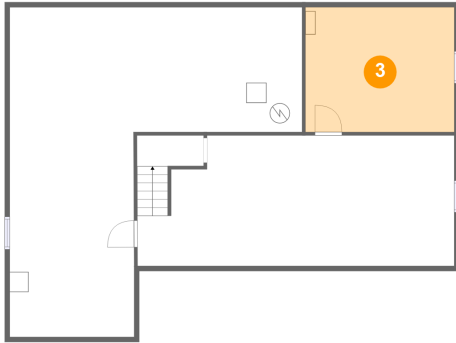


Dimensions: 31'7" x 13'0"  
Area: 407 sq. ft  
Counted as Living Area: No

Heated: Yes  
Finished: No  
Enclosed: Yes  
Contiguous: Yes  
Permitted: Yes  
Wet Space: No  
Addition: No  
Conversion: No

# 1062 Kingsport Drive, Wheeling, Cook County, Illinois, United States, 60090

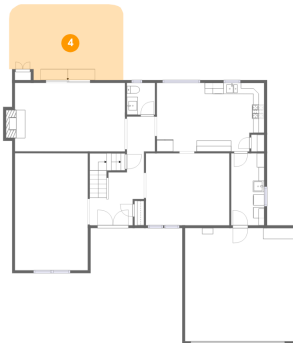
## 3 Floor 1 - Storage



Dimensions: 14'10" x 12'5"  
Area: 184 sq. ft  
Counted as Living Area: No

Heated: No  
Finished: No  
Enclosed: No  
Contiguous: Yes  
Permitted: Yes  
Wet Space: No  
Addition: No  
Conversion: No

## 4 Floor 2 - Patio



Dimensions: 20'8" x 13'8"  
Area: 273 sq. ft  
Counted as Living Area: No

Heated: No  
Finished: Yes  
Enclosed: No  
Contiguous: Yes  
Permitted: Yes  
Wet Space: No  
Addition: No  
Conversion: No

## 5 Floor 2 - Family Room



Dimensions: 20'0" x 12'5"  
Area: 260 sq. ft  
Counted as Living Area: Yes

Heated: Yes  
Finished: Yes  
Enclosed: Yes  
Contiguous: Yes  
Permitted: Yes  
Wet Space: No  
Addition: No  
Conversion: No

# 1062 Kingsport Drive, Wheeling, Cook County, Illinois, United States, 60090

## 6 Floor 2 - Dining Room



Dimensions: 15'2" x 13'0"  
Area: 197 sq. ft  
Counted as Living Area:  
Yes

Heated: Yes  
Finished: Yes  
Enclosed: Yes  
Contiguous:  
Yes  
Permitted: Yes  
Wet Space: No  
Addition: No  
Conversion: No

## 7 Floor 2 - Laundry



Dimensions: 6'0" x 13'0"  
Area: 78 sq. ft  
Counted as Living Area:  
Yes

Heated: Yes  
Finished: Yes  
Enclosed: Yes  
Contiguous:  
Yes  
Permitted: Yes  
Wet Space: No  
Addition: No  
Conversion: No

## 8 Floor 2 - Living Room



Dimensions: 13'2" x 21'2"  
Area: 280 sq. ft  
Counted as Living Area:  
Yes

Heated: Yes  
Finished: Yes  
Enclosed: Yes  
Contiguous:  
Yes  
Permitted: Yes  
Wet Space: No  
Addition: No  
Conversion: No

# 1062 Kingsport Drive, Wheeling, Cook County, Illinois, United States, 60090

## 9 Floor 2 - Porch



Dimensions: 16'7" x 8'2"  
Area: 135 sq. ft  
Counted as Living Area: No

Heated: No  
Finished: Yes  
Enclosed: No  
Contiguous: Yes  
Permitted: Yes  
Wet Space: No  
Addition: No  
Conversion: No

## 10 Floor 2 - Eat-in Kitchen



Dimensions: 19'6" x 12'5"  
Area: 233 sq. ft  
Counted as Living Area: Yes

Heated: Yes  
Finished: Yes  
Enclosed: Yes  
Contiguous: Yes  
Permitted: Yes  
Wet Space: No  
Addition: No  
Conversion: No

## 11 Floor 2 - Garage



Dimensions: 19'9" x 20'6"  
Area: 405 sq. ft  
Counted as Living Area: No

Heated: No  
Finished: No  
Enclosed: Yes  
Contiguous: Yes  
Permitted: Yes  
Wet Space: No  
Addition: No  
Conversion: No



# 1062 Kingsport Drive, Wheeling, Cook County, Illinois, United States, 60090

## 12 Floor 2 - Foyer



Dimensions: 6'5" x 9'7"  
Area: 108 sq. ft  
Counted as Living Area:  
Yes

Heated: Yes  
Finished: Yes  
Enclosed: Yes  
Contiguous:  
Yes  
Permitted: Yes  
Wet Space: No  
Addition: No  
Conversion: No

## 13 Floor 2 - Hall



Dimensions: 5'1" x 9'9"  
Area: 43 sq. ft  
Counted as Living Area:  
Yes

Heated: Yes  
Finished: Yes  
Enclosed: Yes  
Contiguous:  
Yes  
Permitted: Yes  
Wet Space: No  
Addition: No  
Conversion: No

## 14 Floor 2 - Wc

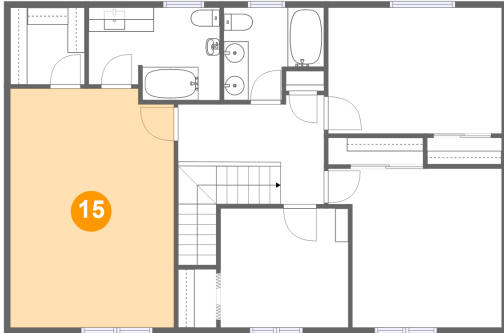


Dimensions: 5'1" x 5'9"  
Area: 29 sq. ft  
Counted as Living Area:  
Yes

Heated: Yes  
Finished: Yes  
Enclosed: Yes  
Contiguous:  
Yes  
Permitted: Yes  
Wet Space: Yes  
Addition: No  
Conversion: No

# 1062 Kingsport Drive, Wheeling, Cook County, Illinois, United States, 60090

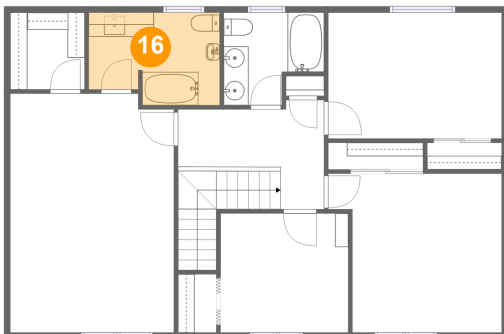
## 15 Floor 3 - Primary Bedroom



Dimensions: 13'2" x 19'3"  
Area: 250 sq. ft  
Counted as Living Area:  
Yes

Heated: Yes  
Finished: Yes  
Enclosed: Yes  
Contiguous:  
Yes  
Permitted: Yes  
Wet Space: No  
Addition: No  
Conversion: No

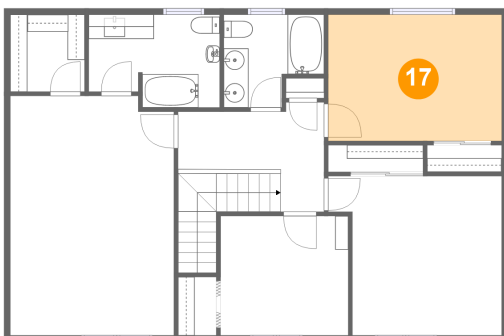
## 16 Floor 3 - Bath



Dimensions: 10'7" x 7'6"  
Area: 73 sq. ft  
Counted as Living Area:  
Yes

Heated: Yes  
Finished: Yes  
Enclosed: Yes  
Contiguous:  
Yes  
Permitted: Yes  
Wet Space: Yes  
Addition: No  
Conversion: No

## 17 Floor 3 - Bedroom

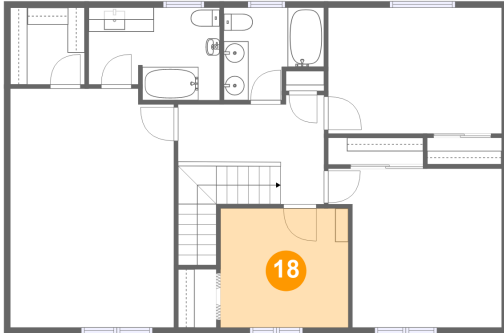


Dimensions: 14'0" x 10'1"  
Area: 142 sq. ft  
Counted as Living Area:  
Yes

Heated: Yes  
Finished: Yes  
Enclosed: Yes  
Contiguous:  
Yes  
Permitted: Yes  
Wet Space: No  
Addition: No  
Conversion: No

# 1062 Kingsport Drive, Wheeling, Cook County, Illinois, United States, 60090

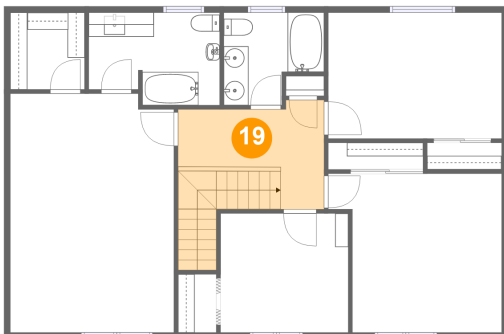
## 18 Floor 3 - Bedroom



Dimensions: 10'4" x 9'7"  
Area: 99 sq. ft  
Counted as Living Area:  
Yes

Heated: Yes  
Finished: Yes  
Enclosed: Yes  
Contiguous:  
Yes  
Permitted: Yes  
Wet Space: No  
Addition: No  
Conversion: No

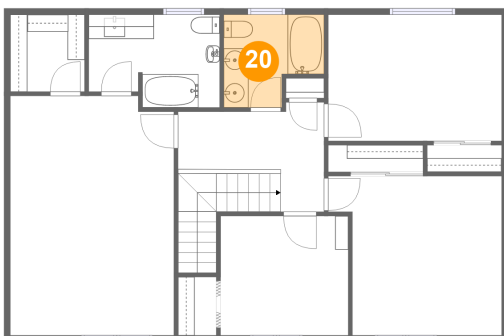
## 19 Floor 3 - Hall



Dimensions: 11'9" x 8'10"  
Area: 112 sq. ft  
Counted as Living Area:  
Yes

Heated: Yes  
Finished: Yes  
Enclosed: Yes  
Contiguous:  
Yes  
Permitted: Yes  
Wet Space: No  
Addition: No  
Conversion: No

## 20 Floor 3 - Bath

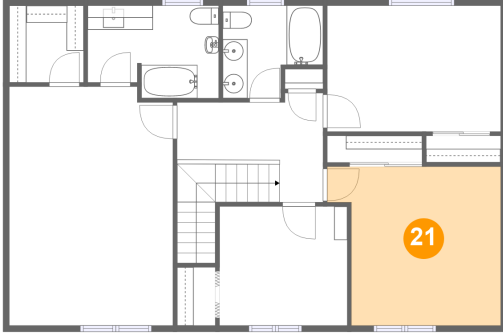


Dimensions: 8'1" x 7'6"  
Area: 51 sq. ft  
Counted as Living Area:  
Yes

Heated: Yes  
Finished: Yes  
Enclosed: Yes  
Contiguous:  
Yes  
Permitted: Yes  
Wet Space: Yes  
Addition: No  
Conversion: No

**1062 Kingsport Drive, Wheeling, Cook County,  
Illinois, United States, 60090**

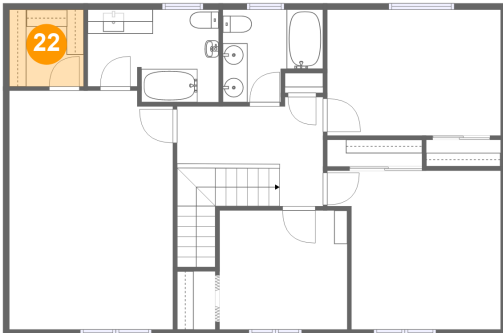
**21 Floor 3 - Bedroom**



Dimensions: 14'0" x 12'10"  
Area: 160 sq. ft  
Counted as Living Area:  
Yes

Heated: Yes  
Finished: Yes  
Enclosed: Yes  
Contiguous:  
Yes  
Permitted: Yes  
Wet Space: No  
Addition: No  
Conversion: No

**22 Floor 3 - W.i.c.**



Dimensions: 6'0" x 6'2"  
Area: 37 sq. ft  
Counted as Living Area:  
Yes

Heated: Yes  
Finished: Yes  
Enclosed: Yes  
Contiguous:  
Yes  
Permitted: Yes  
Wet Space: No  
Addition: No  
Conversion: No