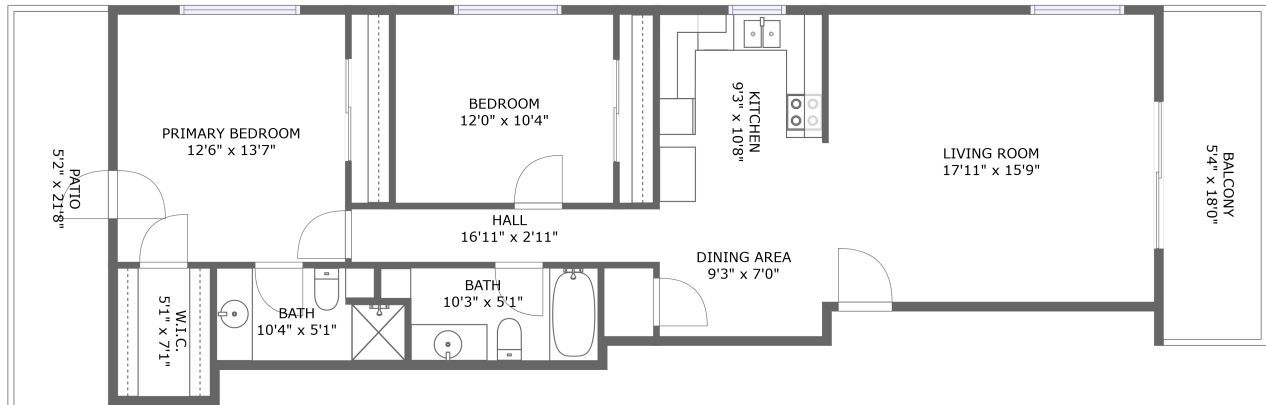



2605 Solano Road, Pismo Beach, California 93449, United States, Unit E




FLOOR 1

Property summary

 **0** Garages

 **2** Bedrooms

 **2** Bathrooms

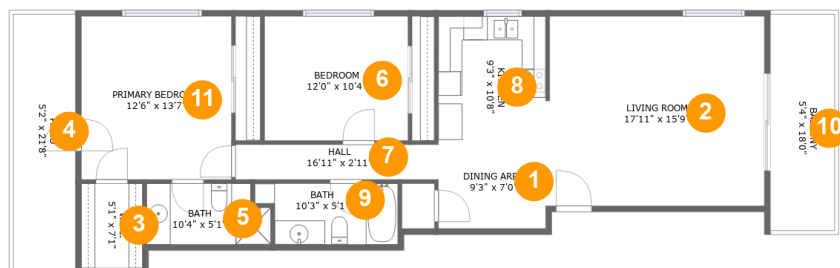
 **0** Half baths

 **1** Floors

 **1,021**
Gross living
area sqft

 **1,230**
Total sqft

2605 Solano Road, Pismo Beach, California 93449, United States, Unit E



Room dimensions

Floor 1

Total sqft: 1230 Living area: 1021

#		Dimensions	sqft	Counted as living area
1	Dining Area	9'3" x 7'0"	64 sq. ft	Yes
2	Living Room	17'11" x 15'9"	283 sq. ft	Yes
3	W.I.C.	5'1" x 7'1"	36 sq. ft	Yes
4	Patio	5'2" x 21'8"	112 sq. ft	No
5	Bath	10'4" x 5'1"	49 sq. ft	Yes
6	Bedroom	12'0" x 10'4"	124 sq. ft	Yes
7	Hall	16'11" x 2'11"	49 sq. ft	Yes
8	Kitchen	9'3" x 10'8"	97 sq. ft	Yes
9	Bath	10'3" x 5'1"	55 sq. ft	Yes
10	Balcony	5'4" x 18'0"	97 sq. ft	No
11	Primary Bedroom	12'6" x 13'7"	171 sq. ft	Yes

**2605 Solano Road, Pismo Beach, California 93449,
United States, Unit E**

1 Floor 1 - Dining Area



Dimensions: 9'3" x 7'0"
Area: 64 sq. ft
Counted as living area: Yes

Heated: Yes
Finished: Yes
Enclosed: Yes
Contiguous: Yes
Permitted: Yes
Wet space: No
Addition: No
Conversion: No

2 Floor 1 - Living Room

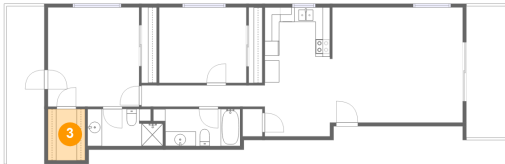


Dimensions: 17'11" x 15'9"
Area: 283 sq. ft
Counted as living area: Yes

Heated: Yes
Finished: Yes
Enclosed: Yes
Contiguous: Yes
Permitted: Yes
Wet space: No
Addition: No
Conversion: No

2605 Solano Road, Pismo Beach, California 93449, United States, Unit E

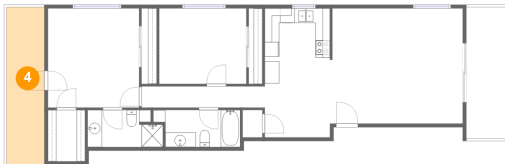
3 Floor 1 - W.I.C.



Dimensions: 5'1" x 7'1"
Area: 36 sq. ft
Counted as living area: Yes

Heated: Yes
Finished: Yes
Enclosed: Yes
Contiguous: Yes
Permitted: Yes
Wet space: No
Addition: No
Conversion: No

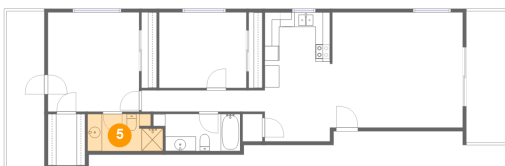
4 Floor 1 - Patio



Dimensions: 5'2" x 21'8"
Area: 112 sq. ft
Counted as living area: No

Heated: No
Finished: Yes
Enclosed: No
Contiguous: Yes
Permitted: Yes
Wet space: No
Addition: No
Conversion: No

5 Floor 1 - Bath



Dimensions: 10'4" x 5'1"
Area: 49 sq. ft
Counted as living area: Yes

Heated: Yes
Finished: Yes
Enclosed: Yes
Contiguous: Yes
Permitted: Yes
Wet space: Yes
Addition: No
Conversion: No

2605 Solano Road, Pismo Beach, California 93449, United States, Unit E

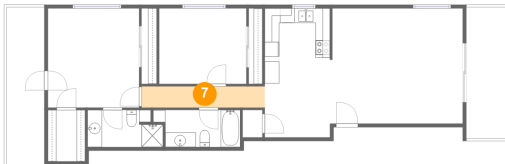
6 Floor 1 - Bedroom



Dimensions: 12'0" x 10'4"
Area: 124 sq. ft
Counted as living area: Yes

Heated: Yes
Finished: Yes
Enclosed: Yes
Contiguous: Yes
Permitted: Yes
Wet space: No
Addition: No
Conversion: No

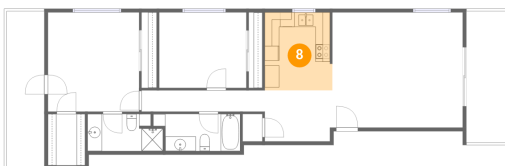
7 Floor 1 - Hall



Dimensions: 16'11" x 2'11"
Area: 49 sq. ft
Counted as living area: Yes

Heated: Yes
Finished: Yes
Enclosed: Yes
Contiguous: Yes
Permitted: Yes
Wet space: No
Addition: No
Conversion: No

8 Floor 1 - Kitchen



Dimensions: 9'3" x 10'8"
Area: 97 sq. ft
Counted as living area: Yes

Heated: Yes
Finished: Yes
Enclosed: Yes
Contiguous: Yes
Permitted: Yes
Wet space: No
Addition: No
Conversion: No

**2605 Solano Road, Pismo Beach, California 93449,
United States, Unit E**

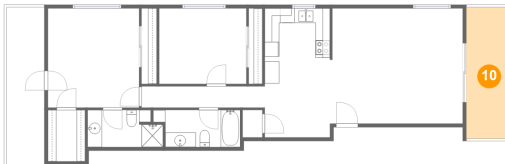
9 Floor 1 - Bath



Dimensions: 10'3" x 5'1"
Area: 55 sq. ft
Counted as living area: Yes

Heated: Yes
Finished: Yes
Enclosed: Yes
Contiguous: Yes
Permitted: Yes
Wet space: Yes
Addition: No
Conversion: No

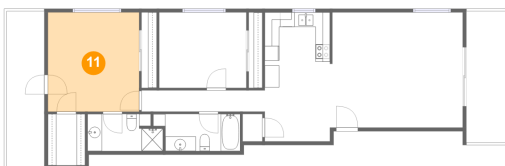
10 Floor 1 - Balcony



Dimensions: 5'4" x 18'0"
Area: 97 sq. ft
Counted as living area: No

Heated: No
Finished: Yes
Enclosed: No
Contiguous: Yes
Permitted: Yes
Wet space: No
Addition: No
Conversion: No

11 Floor 1 - Primary Bedroom



Dimensions: 12'6" x 13'7"
Area: 171 sq. ft
Counted as living area: Yes

Heated: Yes
Finished: Yes
Enclosed: Yes
Contiguous: Yes
Permitted: Yes
Wet space: No
Addition: No
Conversion: No