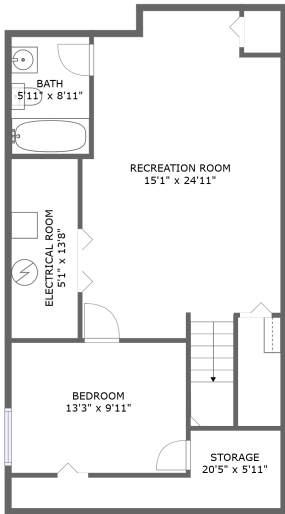
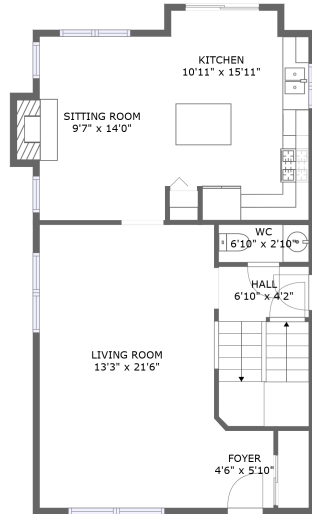


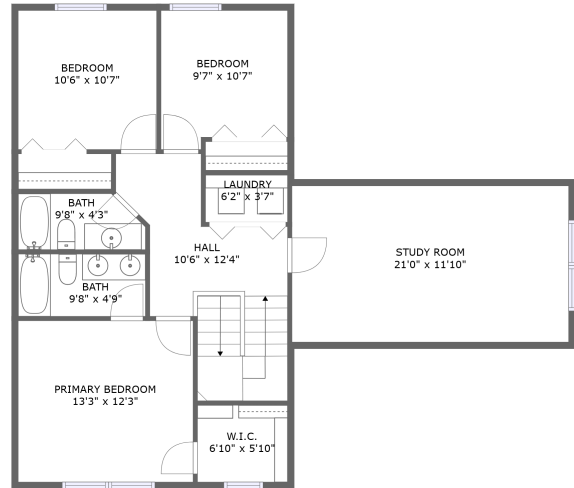
# 407 Waterbury Drive, Round Lake, Illinois 60073, United States



FLOOR 1



FLOOR 2




FLOOR 3

## Property Summary

 **0** garages

 **4** bedrooms

 **3** bathrooms

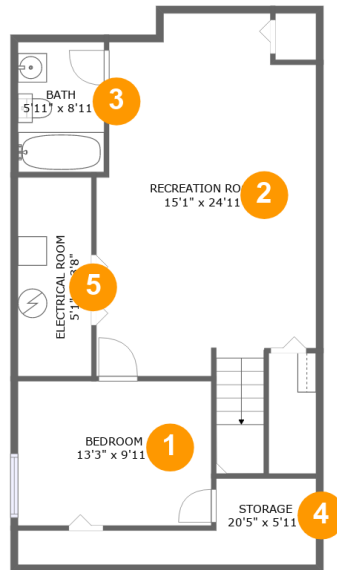
 **1** half baths

 **3** floors

 **2,248** Gross Living Area sqft

 **2,695** total sqft

# 407 Waterbury Drive, Round Lake, Illinois 60073, United States

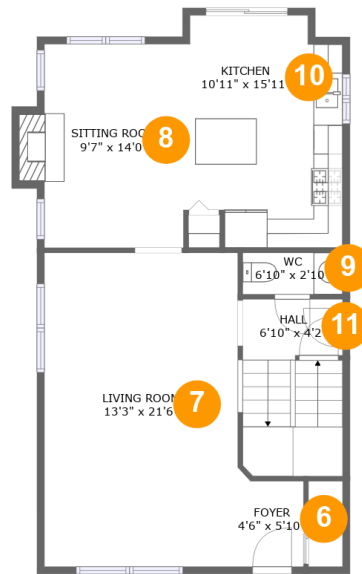


## Room Dimensions

**Floor 1****Total sqft: 812****Living area: 649**

#	Room name	Dimensions	Area (sqft)	Counted as Living Area
1	Bedroom	13'3" x 9'11"	131 sq. ft	Yes
2	Recreation Room	15'1" x 24'11"	361 sq. ft	Yes
3	Bath	5'11" x 8'11"	53 sq. ft	Yes
4	Storage	20'5" x 5'11"	72 sq. ft	No
5	Electrical Room	5'1" x 13'8"	69 sq. ft	No

# 407 Waterbury Drive, Round Lake, Illinois 60073, United States

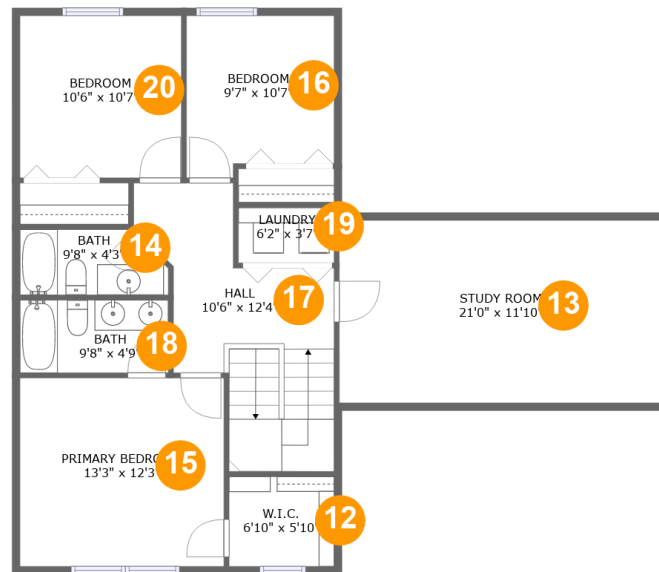


## Room Dimensions

**Floor 2****Total sqft: 818****Living area: 811**

#	Room name	Dimensions	Area (sqft)	Counted as Living Area
6	Foyer	4'6" x 5'10"	27 sq. ft	Yes
7	Living Room	13'3" x 21'6"	286 sq. ft	Yes
8	Sitting Room	9'7" x 14'0"	141 sq. ft	Yes
9	Wc	6'10" x 2'10"	20 sq. ft	Yes
10	Kitchen	10'11" x 15'11"	161 sq. ft	Yes
11	Hall	6'10" x 4'2"	83 sq. ft	Yes

# 407 Waterbury Drive, Round Lake, Illinois 60073, United States



## Room Dimensions

Floor 3

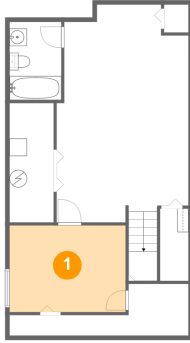
Total sqft: 1065

Living area: 788

#	Room name	Dimensions	Area (sqft)	Counted as Living Area
12	W.i.c.	6'10" x 5'10"	40 sq. ft	Yes
13	Study Room	21'0" x 11'10"	249 sq. ft	No
14	Bath	9'8" x 4'3"	38 sq. ft	Yes
15	Primary Bedroom	13'3" x 12'3"	163 sq. ft	Yes
16	Bedroom	9'7" x 10'7"	95 sq. ft	Yes
17	Hall	10'6" x 12'4"	148 sq. ft	Yes
18	Bath	9'8" x 4'9"	46 sq. ft	Yes
19	Laundry	6'2" x 3'7"	22 sq. ft	Yes
20	Bedroom	10'6" x 10'7"	111 sq. ft	Yes

# 407 Waterbury Drive, Round Lake, Illinois 60073, United States

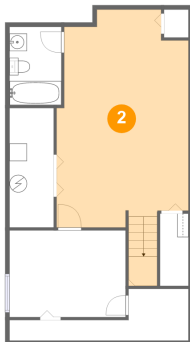
## 1 Floor 1 - Bedroom



**Dimensions:** 13'3" x 9'11"  
**Area:** 131 sq. ft  
**Counted as Living Area:**  
Yes

**Heated:** Yes  
**Finished:** Yes  
**Enclosed:** Yes  
**Contiguous:**  
Yes  
**Permitted:** Yes  
**Wet Space:** No  
**Addition:** No  
**Conversion:** No

## 2 Floor 1 - Recreation Room

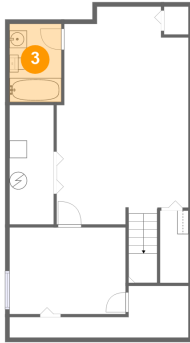


**Dimensions:** 15'1" x 24'11"  
**Area:** 361 sq. ft  
**Counted as Living Area:**  
Yes

**Heated:** Yes  
**Finished:** Yes  
**Enclosed:** Yes  
**Contiguous:**  
Yes  
**Permitted:** Yes  
**Wet Space:** No  
**Addition:** No  
**Conversion:** No

# 407 Waterbury Drive, Round Lake, Illinois 60073, United States

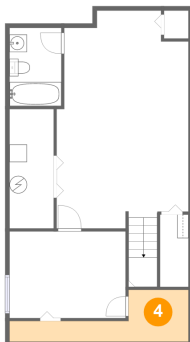
## 3 Floor 1 - Bath



Dimensions: 5'11" x 8'11"  
Area: 53 sq. ft  
Counted as Living Area:  
Yes

Heated: Yes  
Finished: Yes  
Enclosed: Yes  
Contiguous:  
Yes  
Permitted: Yes  
Wet Space: Yes  
Addition: No  
Conversion: No

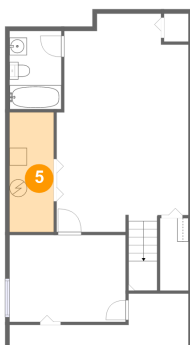
## 4 Floor 1 - Storage



Dimensions: 20'5" x 5'11"  
Area: 72 sq. ft  
Counted as Living Area: No

Heated: No  
Finished: No  
Enclosed: No  
Contiguous: Yes  
Permitted: Yes  
Wet Space: No  
Addition: No  
Conversion: No

## 5 Floor 1 - Electrical Room

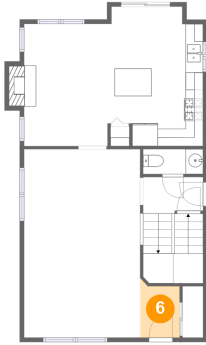


Dimensions: 5'1" x 13'8"  
Area: 69 sq. ft  
Counted as Living Area: No

Heated: No  
Finished: No  
Enclosed: Yes  
Contiguous: Yes  
Permitted: Yes  
Wet Space: No  
Addition: No  
Conversion: No

# 407 Waterbury Drive, Round Lake, Illinois 60073, United States

## 6 Floor 2 - Foyer



Dimensions: 4'6" x 5'10"  
Area: 27 sq. ft  
Counted as Living Area:  
Yes

Heated: Yes  
Finished: Yes  
Enclosed: Yes  
Contiguous:  
Yes  
Permitted: Yes  
Wet Space: No  
Addition: No  
Conversion: No

## 7 Floor 2 - Living Room



Dimensions: 13'3" x 21'6"  
Area: 286 sq. ft  
Counted as Living Area:  
Yes

Heated: Yes  
Finished: Yes  
Enclosed: Yes  
Contiguous:  
Yes  
Permitted: Yes  
Wet Space: No  
Addition: No  
Conversion: No

## 8 Floor 2 - Sitting Room

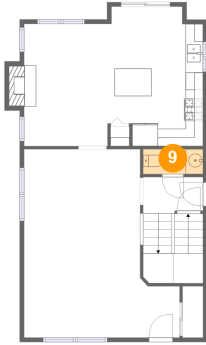


Dimensions: 9'7" x 14'0"  
Area: 141 sq. ft  
Counted as Living Area:  
Yes

Heated: Yes  
Finished: Yes  
Enclosed: Yes  
Contiguous:  
Yes  
Permitted: Yes  
Wet Space: No  
Addition: No  
Conversion: No

# 407 Waterbury Drive, Round Lake, Illinois 60073, United States

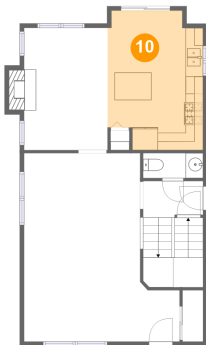
## 9 Floor 2 - Wc



Dimensions: 6'10" x 2'10"  
Area: 20 sq. ft  
Counted as Living Area:  
Yes

Heated: Yes  
Finished: Yes  
Enclosed: Yes  
Contiguous:  
Yes  
Permitted: Yes  
Wet Space: Yes  
Addition: No  
Conversion: No

## 10 Floor 2 - Kitchen



Dimensions: 10'11" x 15'11"  
Area: 161 sq. ft  
Counted as Living Area:  
Yes

Heated: Yes  
Finished: Yes  
Enclosed: Yes  
Contiguous:  
Yes  
Permitted: Yes  
Wet Space: No  
Addition: No  
Conversion: No

## 11 Floor 2 - Hall



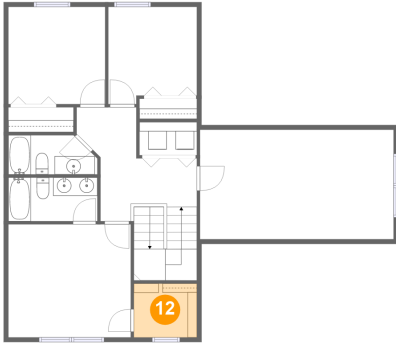
Dimensions: 6'10" x 4'2"  
Area: 83 sq. ft  
Counted as Living Area:  
Yes

Heated: Yes  
Finished: Yes  
Enclosed: Yes  
Contiguous:  
Yes  
Permitted: Yes  
Wet Space: No  
Addition: No  
Conversion: No



# 407 Waterbury Drive, Round Lake, Illinois 60073, United States

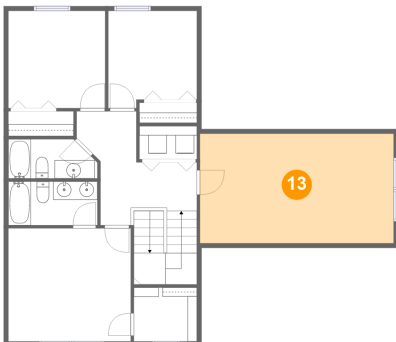
## 12 Floor 3 - W.i.c.



Dimensions: 6'10" x 5'10"  
Area: 40 sq. ft  
Counted as Living Area:  
Yes

Heated: Yes  
Finished: Yes  
Enclosed: Yes  
Contiguous:  
Yes  
Permitted: Yes  
Wet Space: No  
Addition: No  
Conversion: No

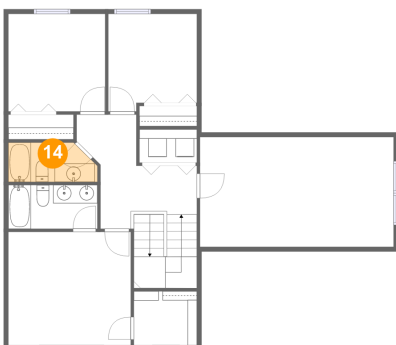
## 13 Floor 3 - Study Room



Dimensions: 21'0" x 11'10"  
Area: 249 sq. ft  
Counted as Living Area: No

Heated: Yes  
Finished: Yes  
Enclosed: Yes  
Contiguous: Yes  
Permitted: Yes  
Wet Space: No  
Addition: No  
Conversion: No

## 14 Floor 3 - Bath

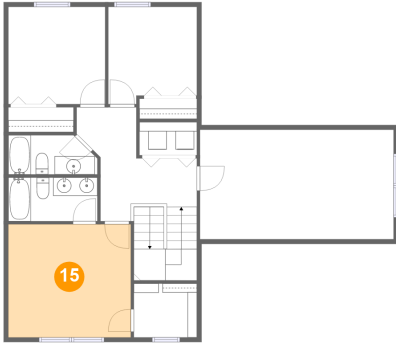


Dimensions: 9'8" x 4'3"  
Area: 38 sq. ft  
Counted as Living Area:  
Yes

Heated: Yes  
Finished: Yes  
Enclosed: Yes  
Contiguous:  
Yes  
Permitted: Yes  
Wet Space: Yes  
Addition: No  
Conversion: No

# 407 Waterbury Drive, Round Lake, Illinois 60073, United States

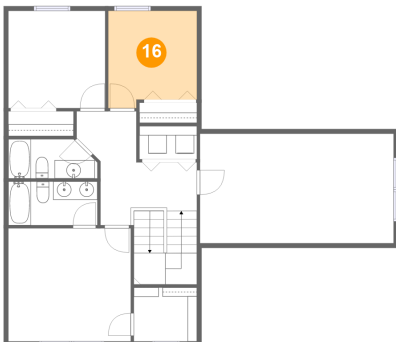
## 15 Floor 3 - Primary Bedroom



Dimensions: 13'3" x 12'3"  
Area: 163 sq. ft  
Counted as Living Area:  
Yes

Heated: Yes  
Finished: Yes  
Enclosed: Yes  
Contiguous:  
Yes  
Permitted: Yes  
Wet Space: No  
Addition: No  
Conversion: No

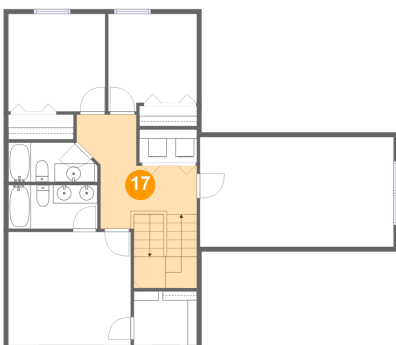
## 16 Floor 3 - Bedroom



Dimensions: 9'7" x 10'7"  
Area: 95 sq. ft  
Counted as Living Area:  
Yes

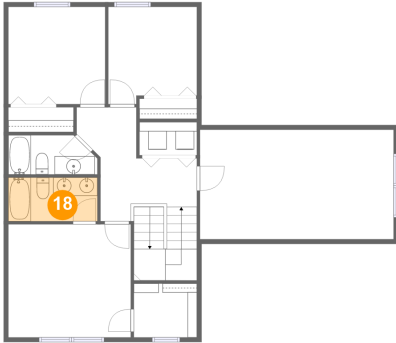
Heated: Yes  
Finished: Yes  
Enclosed: Yes  
Contiguous:  
Yes  
Permitted: Yes  
Wet Space: No  
Addition: No  
Conversion: No

## 17 Floor 3 - Hall



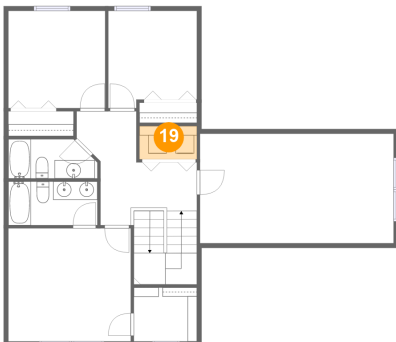
Dimensions: 10'6" x 12'4"  
Area: 148 sq. ft  
Counted as Living Area:  
Yes

Heated: Yes  
Finished: Yes  
Enclosed: Yes  
Contiguous:  
Yes  
Permitted: Yes  
Wet Space: No  
Addition: No  
Conversion: No

**407 Waterbury Drive, Round Lake, Illinois 60073,  
United States****18 Floor 3 - Bath**

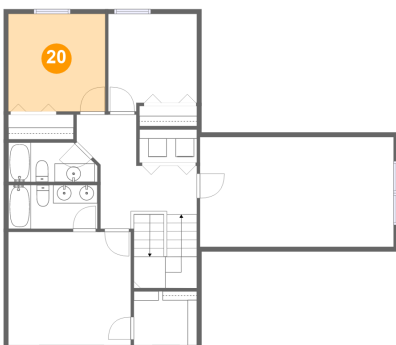
Dimensions: 9'8" x 4'9"  
Area: 46 sq. ft  
Counted as Living Area:  
Yes

Heated: Yes  
Finished: Yes  
Enclosed: Yes  
Contiguous:  
Yes  
Permitted: Yes  
Wet Space: Yes  
Addition: No  
Conversion: No

**19 Floor 3 - Laundry**

Dimensions: 6'2" x 3'7"  
Area: 22 sq. ft  
Counted as Living Area:  
Yes

Heated: Yes  
Finished: Yes  
Enclosed: Yes  
Contiguous:  
Yes  
Permitted: Yes  
Wet Space: No  
Addition: No  
Conversion: No

**20 Floor 3 - Bedroom**

Dimensions: 10'6" x 10'7"  
Area: 111 sq. ft  
Counted as Living Area:  
Yes

Heated: Yes  
Finished: Yes  
Enclosed: Yes  
Contiguous:  
Yes  
Permitted: Yes  
Wet Space: No  
Addition: No  
Conversion: No