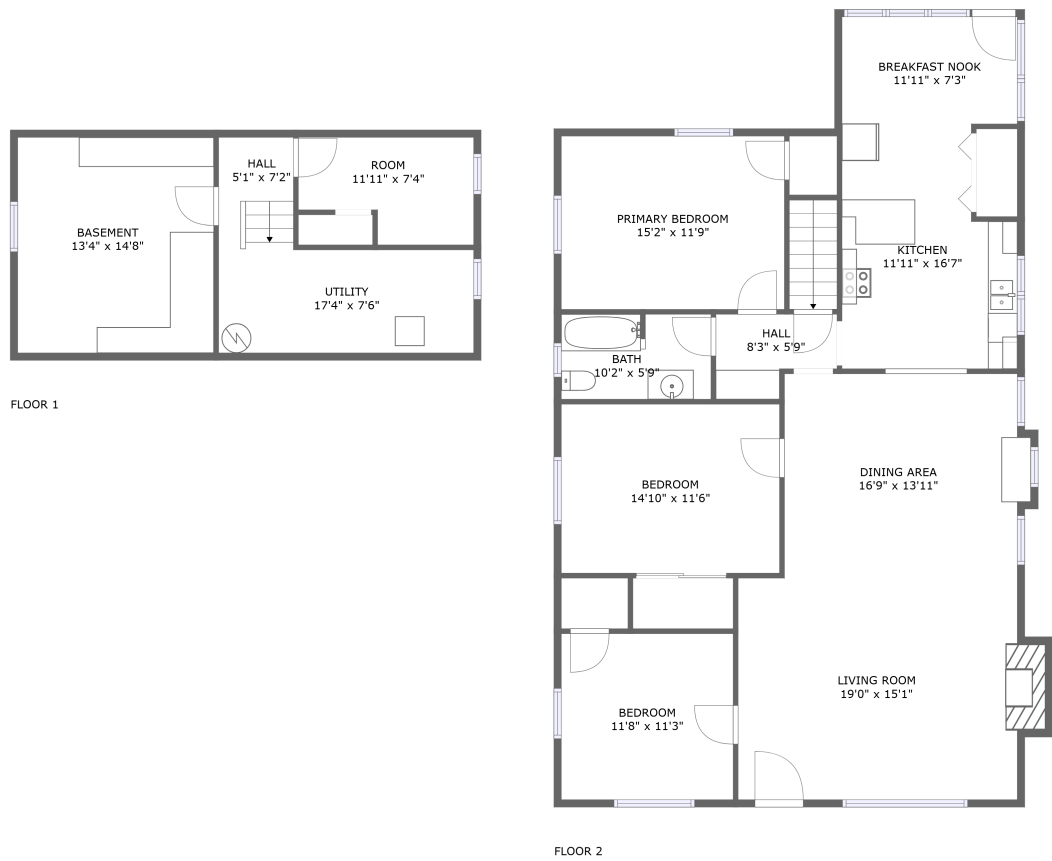




Home report


736 Yakima Street, Filer, Twin Falls County, Idaho, United States, 83328




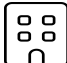
Property summary


**0** Garages


**3** Bedrooms

**1** Bathrooms

**0** Half baths

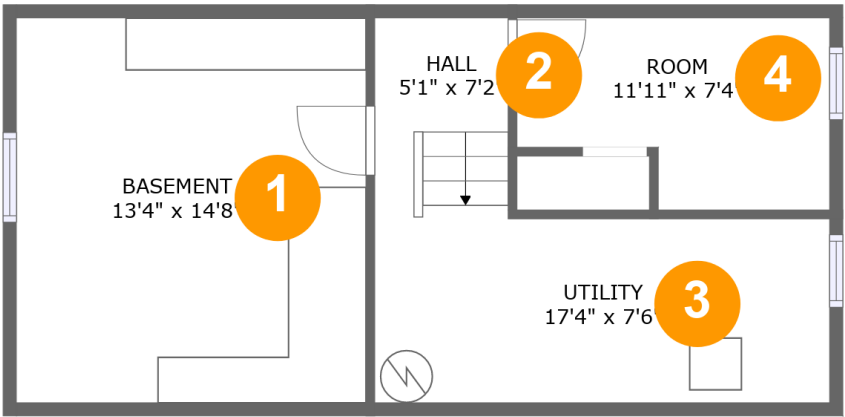
**2** Floors

**1,583** Gross living area sqft

**2,097** Total sqft

Home report

736 Yakima Street, Filer, Twin Falls County, Idaho, United States, 83328



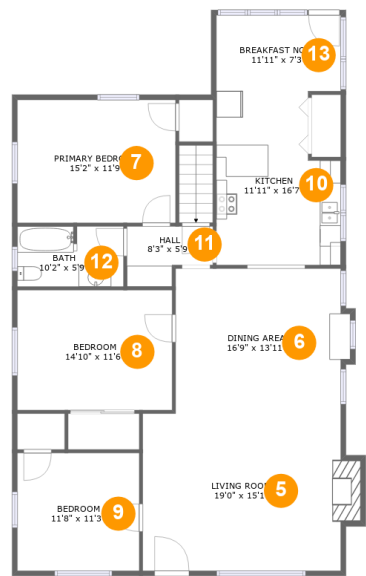
Room dimensions

Floor 1 Total sqft: 501 Living area: 0

#		Dimensions	sqft	Counted as living area
1	Basement	13'4" x 14'8"	195 sq. ft	No
2	Hall	5'1" x 7'2"	36 sq. ft	No
3	Utility	17'4" x 7'6"	124 sq. ft	No
4	Room	11'11" x 7'4"	74 sq. ft	No

Home report

736 Yakima Street, Filer, Twin Falls County, Idaho, United States, 83328



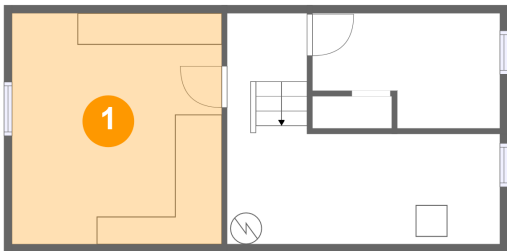
Room dimensions

Floor 2

Total sqft: 1596 Living area: 1583

#		Dimensions	sqft	Counted as living area
5	Living Room	19'0" x 15'1"	297 sq. ft	Yes
6	Dining Area	16'9" x 13'11"	224 sq. ft	Yes
7	Primary Bedroom	15'2" x 11'9"	178 sq. ft	Yes
8	Bedroom	14'10" x 11'6"	170 sq. ft	Yes
9	Bedroom	11'8" x 11'3"	132 sq. ft	Yes
10	Kitchen	11'11" x 16'7"	179 sq. ft	Yes
11	Hall	8'3" x 5'9"	39 sq. ft	Yes
12	Bath	10'2" x 5'9"	58 sq. ft	Yes
13	Breakfast Nook	11'11" x 7'3"	87 sq. ft	Yes

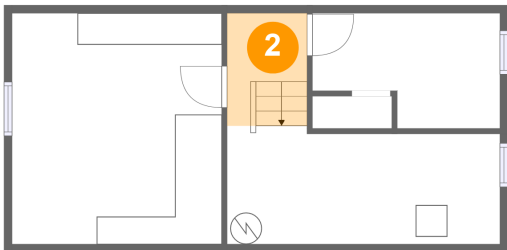
1 Floor 1 - Basement



Dimensions: 13'4" x 14'8"
Area: 195 sq. ft
Counted as living area: No

Heated: Yes
Finished: No
Enclosed: Yes
Contiguous: Yes
Permitted: Yes
Wet space: No
Addition: No
Conversion: No

2 Floor 1 - Hall

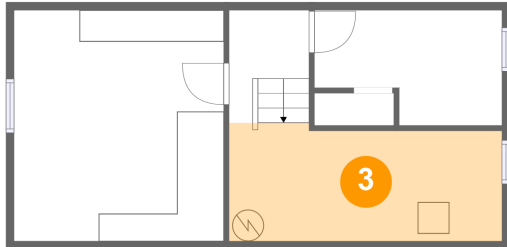


Dimensions: 5'1" x 7'2"
Area: 36 sq. ft
Counted as living area: No

Heated: Yes
Finished: No
Enclosed: Yes
Contiguous: Yes
Permitted: Yes
Wet space: No
Addition: No
Conversion: No

736 Yakima Street, Filer, Twin Falls County, Idaho, United States, 83328

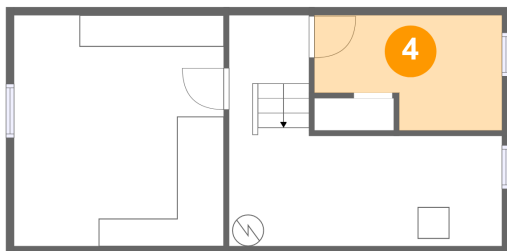
3 Floor 1 - Utility



Dimensions: 17'4" x 7'6"
Area: 124 sq. ft
Counted as living area: No

Heated: Yes
Finished: No
Enclosed: Yes
Contiguous: Yes
Permitted: Yes
Wet space: No
Addition: No
Conversion: No

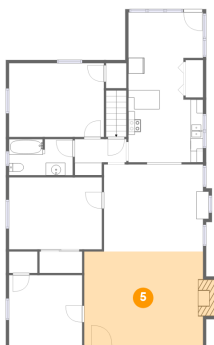
4 Floor 1 - Room



Dimensions: 11'11" x 7'4"
Area: 74 sq. ft
Counted as living area: No

Heated: Yes
Finished: No
Enclosed: Yes
Contiguous: Yes
Permitted: Yes
Wet space: No
Addition: No
Conversion: No

5 Floor 2 - Living Room

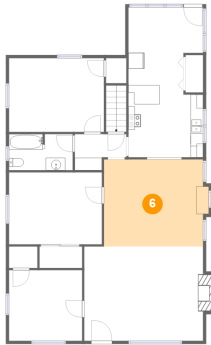


Dimensions: 19'0" x 15'1"
Area: 297 sq. ft
Counted as living area: Yes

Heated: Yes
Finished: Yes
Enclosed: Yes
Contiguous: Yes
Permitted: Yes
Wet space: No
Addition: No
Conversion: No

736 Yakima Street, Filer, Twin Falls County, Idaho, United States,
83328

6 Floor 2 - Dining Area



Dimensions: 16'9" x 13'11"
Area: 224 sq. ft
Counted as living area: Yes

Heated: Yes
Finished: Yes
Enclosed: Yes
Contiguous: Yes
Permitted: Yes
Wet space: No
Addition: No
Conversion: No

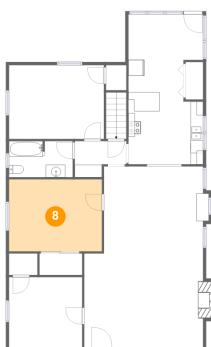
7 Floor 2 - Primary Bedroom



Dimensions: 15'2" x 11'9"
Area: 178 sq. ft
Counted as living area: Yes

Heated: Yes
Finished: Yes
Enclosed: Yes
Contiguous: Yes
Permitted: Yes
Wet space: No
Addition: No
Conversion: No

8 Floor 2 - Bedroom



Dimensions: 14'10" x 11'6"
Area: 170 sq. ft
Counted as living area: Yes

Heated: Yes
Finished: Yes
Enclosed: Yes
Contiguous: Yes
Permitted: Yes
Wet space: No
Addition: No
Conversion: No

736 Yakima Street, Filer, Twin Falls County, Idaho, United States,
83328

9 Floor 2 - Bedroom



Dimensions: 11'8" x 11'3"
Area: 132 sq. ft
Counted as living area: Yes

Heated: Yes
Finished: Yes
Enclosed: Yes
Contiguous: Yes
Permitted: Yes
Wet space: No
Addition: No
Conversion: No

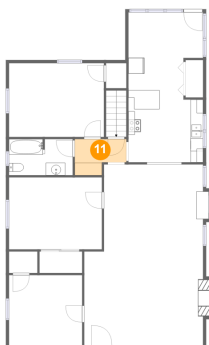
10 Floor 2 - Kitchen



Dimensions: 11'11" x 16'7"
Area: 179 sq. ft
Counted as living area: Yes

Heated: Yes
Finished: Yes
Enclosed: Yes
Contiguous: Yes
Permitted: Yes
Wet space: No
Addition: No
Conversion: No

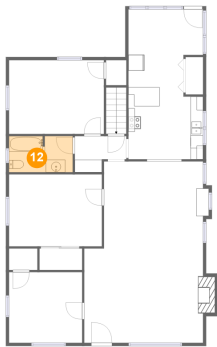
11 Floor 2 - Hall



Dimensions: 8'3" x 5'9"
Area: 39 sq. ft
Counted as living area: Yes

Heated: Yes
Finished: Yes
Enclosed: Yes
Contiguous: Yes
Permitted: Yes
Wet space: No
Addition: No
Conversion: No

12 Floor 2 - Bath



Dimensions: 10'2" x 5'9"
Area: 58 sq. ft
Counted as living area: Yes

Heated: Yes
Finished: Yes
Enclosed: Yes
Contiguous: Yes
Permitted: Yes
Wet space: Yes
Addition: No
Conversion: No

13 Floor 2 - Breakfast Nook



Dimensions: 11'11" x 7'3"
Area: 87 sq. ft
Counted as living area: Yes

Heated: Yes
Finished: Yes
Enclosed: Yes
Contiguous: Yes
Permitted: Yes
Wet space: No
Addition: No
Conversion: No